



# WESTERN KENTUCKY UNIVERSITY RECRUITMENT HANDBOOK 2024

# Western Kentucky University

## PANHELLENIC RECRUITMENT

**NAME:** \_\_\_\_\_

**CORE VALUE:** \_\_\_\_\_

**GAMMA CHI:** \_\_\_\_\_

**GAMMA CHI CONTACT:** \_\_\_\_\_

# Table of Contents



<b>WELCOME TO THE HILL.</b> .....	<b>1</b>
<b>RECRUITMENT STAFF.</b> .....	<b>2</b>
<b>MEET YOUR GAMMA CHI.</b> .....	<b>3</b>
<b>RECRUITMENT RULES.</b> .....	<b>4</b>
<b>WHAT TO WEAR.</b> .....	<b>5</b>
<b>RECRUITMENT DO'S AND DON'TS.</b> .....	<b>11</b>
<b>CHAPTER PROFILES.</b> .....	<b>12</b>
<b>FREQUENTLY ASKED QUESTIONS</b> .....	<b>24</b>
<b>MUTUAL SELECTION.</b> .....	<b>25</b>
<b>MEMBERSHIP ACCEPTANCE.</b> .....	<b>26</b>
<b>SORORITY RECRUITMENT.</b> .....	<b>27</b>
<b>NATIONAL PANHELLENIC CONFERENCE CREED.</b>	<b>29</b>
<b>PNM BILL OF RIGHTS.</b> .....	<b>30</b>
<b>RECRUITMENT MAP.</b> .....	<b>31</b>
<b>STAY CONNECTED WITH US.</b> .....	<b>32</b>

# Welcome to the Hill!

DEAR POTENTIAL NEW MEMBERS,  
CONGRATULATIONS ON MAKING ONE OF THE BIGGEST DECISIONS OF YOUR LIFE BY JOINING GREEK LIFE AT WESTERN KENTUCKY UNIVERSITY! ON BEHALF OF THE PANHELLENIC COMMUNITY WE WOULD LIKE TO EXTEND OUT A WARM WELCOME. WE HAVE BEEN ANXIOUSLY AWAITING YOUR ARRIVAL AND WORKING AROUND THE CLOCK TO ENSURE THAT YOU HAVE A FANTASTIC EXPERIENCE DURING PANHELLENIC RECRUITMENT. YOU MAY BE WONDERING WHAT THIS WEEK IS ALL ABOUT. THIS BOOKLET WILL BE YOUR GUIDE THROUGHOUT THE JOURNEY FOR THE FALL 2024 RECRUITMENT PROCESS. IT ANSWERS WHO, WHAT, WHERE, AND WHYS OF FORMAL RECRUITMENT. IF YOU HAVE ANY QUESTIONS CONTACT YOUR GAMMA CHI OR RECRUITMENT STAFF.

XOXO

WKU Panhellenic Council



PANHELLENIC COUNCIL PHOTOSHOOT



PINK LILLY PANHELLENIC PHOTOSHOOT



# Recruitment Staff

THE RECRUITMENT STAFF IS MADE UP OF WOMEN FROM PANHELLENIC'S EXECUTIVE COUNCIL WHO ARE PASSIONATE ABOUT STRENGTHENING WKU'S SORORITY COMMUNITY AND WELCOMING NEW MEMBERS INTO OUR COMMUNITY. THESE WOMEN WORK ALONGSIDE GAMMA CHI'S AS DISAFFILIATED MEMBERS OF THE GREEK COMMUNITY TO COUNSEL WOMEN INTERESTED IN JOINING THE SORORITY COMMUNITY. THE RECRUITMENT STAFF ALSO SPENDS COUNTLESS HOURS BEHIND THE SCENES WORKING TO ENSURE THAT THE RECRUITMENT PROCESS RUNS AS SMOOTHLY AS POSSIBLE. THE RECRUITMENT STAFF IS SECONDARY TO YOUR GAMMA CHI'S DURING THIS WEEK AND IS ALWAYS OPEN TO ANY QUESTIONS OR CONCERNS DURING THE RECRUITMENT PROCESS.



# Meet Your Gamma Chi

**A RECRUITMENT COUNSELOR (GAMMA CHI) IS ASSIGNED TO EACH POTENTIAL NEW MEMBER (PNM) TO ASSIST DURING FORMAL RECRUITMENT. HER JOB IS TO NAVIGATE YOU THROUGH RECRUITMENT WEEK BY PROVIDING INFORMATION AND ANSWERS TO ALL YOUR QUESTIONS CONCERNING THE WKU SORORITY COMMUNITY. DO NOT HESITATE TO DISCUSS YOUR THOUGHTS WITH YOUR GAMMA CHI THROUGHOUT THE RECRUITMENT PROCESS. IN ORDER TO REMAIN UNBIASED, GAMMA CHI'S DISAFFILIATE FROM THEIR CHAPTERS DURING THE SUMMER AND REJOIN THEIR CHAPTERS ON BID DAY. YOUR GAMMA CHI'S AFFILIATION WILL BE REVEALED AT THE END OF THE WEEK. WE ENCOURAGE YOU TO EMBRACE THE ANONYMITY OF YOUR GAMMA CHI TO ALLOW FOR A MORE OBJECTIVE EXPERIENCE**



# Recruitment Rules

- FOLLOWING MEET THE GREEKS AND THROUGHOUT FORMAL RECRUITMENT, THERE WILL BE NO UNNATURAL CONTACT WITH POTENTIAL NEW MEMBERS BY SORORITY MEMBERS, NEW MEMBERS, AND ALUMNAE. DISCUSSIONS REGARDING RECRUITMENT ARE PROHIBITED OUTSIDE OF THE RECRUITMENT PROCESS. THIS INCLUDES TEXTING, CALLING, EMAILING, ETC.
- GAMMA CHIS WILL NOT PARTICIPATE IN THEIR RESPECTIVE SORORITY'S ACTIVITIES. THEY WILL NOT DISCLOSE THEIR AFFILIATION DURING FORMAL RECRUITMENT UNTIL AFTER BIDS ARE DELIVERED. THESE MEMBERS WILL BECOME FULLY DISAFFILIATED BEFORE RECRUITMENT AND WILL NO LONGER WEAR OR DISPLAY THEIR SORORITY LETTERS, CREST, OR SYMBOLS AFTER THIS DATE.
- RECRUITMENT STAFF AND THE OFFICE OF STUDENT ACTIVITIES STRONGLY ENCOURAGES POTENTIAL NEW MEMBERS WHO DECIDE TO WITHDRAW FROM RECRUITMENT, TO DO SO FORMALLY. SPEAK WITH YOUR GAMMA CHI OR RECRUITMENT STAFF FOR FURTHER INFORMATION.
- STRICT SILENCE BETWEEN GAMMA CHI'S AND POTENTIAL NEW MEMBERS WILL BEGIN AFTER PREFERENCE ROUND PARTIES AND CONTINUE UNTIL IMMEDIATELY AFTER BIDS ARE DELIVERED. DURING THIS PERIOD, THERE WILL BE NO CONTACT (ORAL OR WRITTEN) BETWEEN GAMMA CHI'S AND POTENTIAL NEW MEMBERS.

# Orientation

**AT ORIENTATION, YOU WILL MEET THE RECRUITMENT STAFF, RECEIVE INFORMATION ABOUT RECRUITMENT WEEK, AND MEET YOUR RECRUITMENT COUNSELOR, ALSO KNOWN AS A GAMMA CHI! YOU'LL ALSO PARTICIPATE IN OUR VALUES ACTIVITY, TO HELP YOU FURTHER UNDERSTAND THE THINGS YOU ARE LOOKING TO GET OUT OF SORORITY LIFE! YOU WILL NOT GO TO ANY SORORITY HOUSE, BUT YOU WILL HAVE AN OPPORTUNITY TO MEET SOME OF THE SORORITY WOMEN AT "MEET THE GREEKS".**

## *What to Wear*

**THIS IS A GOOD NIGHT TO WEAR SOMETHING CASUAL LIKE SHORTS, JEANS, OR SKIRTS WITH A LIGHT WEIGHT BLOUSE. FLATS OR SANDALS ARE APPROPRIATE. SOMETHING TO KEEP YOU COMFORTABLE AS YOU ARE WALKING AROUND AND MEETING NEW PEOPLE.**





# Go Greek

**YOU WILL MEET THE NINE SORORITY CHAPTERS PARTICIPATING IN FORMAL RECRUITMENT FOR 20 MINUTES EACH. THE PURPOSE OF THESE PARTIES IS TO GIVE YOU A FEEL FOR GREEK LIFE AND THE OPPORTUNITIES THAT SORORITY MEMBERSHIP WILL PRESENT YOU. THIS IS YOUR CHANCE TO SEE EVERY CHAPTER AND LET THEM KNOW WHO YOU ARE.**

## What to Wear

**FOR THIS DAY COMFORT IS KEY! YOU WILL BE PROVIDED WITH A UNIFORM T-SHIRT THAT YOU CAN PAIR WITH SHORTS, JEANS, OR A SKIRT AND SANDALS OR FLATS. NO NEED TO WEAR ANY WEDGE OR HEEL ON THIS CASUAL ROUND.**



# Getting to Know You

**YOU WILL RECEIVE YOUR GETTING-TO-KNOW-YOU SCHEDULE IN THE MORNING FROM YOUR GAMMA CHI. THIS DAY YOU WILL BE SPENDING 30 MINUTES WITH EACH SORORITY ON YOUR PARTY LIST. DON'T BE AFRAID TO ASK QUESTIONS! REMEMBER, EACH SORORITY WANTS TO GET TO KNOW YOUR AUTHENTIC SELF. JUST RELAX, HAVE FUN, AND ABOVE ALL BE YOURSELF.**

## What to Wear

**ON THIS DAY YOU ARE FREE TO WEAR A CUTE OUTFIT OF DRESSY SHORTS OR A SKIRT WITH A NICE BLOUSE, OR A SUNDRESS. KEEP IN MIND THAT YOU WILL BE WALKING THE MOST THIS DAY AND OUTSIDE IN THE HEAT A LOT. SANDALS OR FLATS ARE STILL THE BEST OPTION.**



# Philanthropy

**YOU WILL RECEIVE YOUR PHILANTHROPY ROUND SCHEDULE IN THE MORNING FROM YOUR GAMMA CHI. ON THIS DAY YOU WILL BE SPENDING 40 MINUTES WITH EACH SORORITY ON YOUR PARTY LIST. THESE LONGER PARTIES GIVE YOU THE OPPORTUNITY TO MAKE FRIENDS WITHIN THE SORORITIES YOU VISIT. BEGIN TO PAY ATTENTION TO WHERE YOU WOULD FEEL MOST COMFORTABLE.**

## What to Wear

**THIS IS THE ROUND TO BEGIN WEARING NICE DRESSES OR SKIRT OUTFITS. DRESSY SHOES OR WEDGES WITH SIMPLE JEWELRY ARE ALSO ACCEPTABLE. YOU WANT TO LEAVE A GOOD IMPRESSION AS IT GETS CLOSER TO THE END OF THE WEEK.**



# Preference

**YOU WILL RECEIVE YOUR PREFERENCE SCHEDULE IN THE MORNING FROM YOUR GAMMA CHI. ON THIS DAY, YOU COULD VISIT A MAXIMUM OF TWO CHAPTERS, SPENDING 50 MINUTES WITH EACH SORORITY. DURING THESE PARTIES, THINK BACK TO PREVIOUS ROUNDS AND RECALL WHAT YOU LIKED BEST ABOUT THESE SORORITIES AND WHY YOU WOULD CHOOSE TO JOIN A PARTICULAR GROUP OF WOMEN. THESE SORORITIES INVITED YOU BACK BECAUSE THEY BELIEVE YOU WOULD FIT IN AS A SISTER.**

## What to Wear

**THIS DAY IS MORE ELABORATE IN A CLASSY COCKTAIL DRESS OR FANCY SKIRT OUTFIT PAIRED WITH HEELS OR DRESS SHOES AND NICE JEWELRY. IT IS THE LAST TIME YOU WILL MEET WITH CHAPTERS, SO YOU WANT TO LOOK YOUR ABSOLUTE BEST!**



# Bid Day

**YOU WILL RECEIVE YOUR BID CARD IN THE MORNING FROM YOUR GAMMA CHI. YOUR GAMMA CHI WILL MEET YOU AT YOUR PROSPECTIVE RESIDENCE HALL AND CELEBRATE AS YOU OPEN YOUR BID CARD. THIS DAY, YOU WILL RUN HOME TO ONE SORORITY! DURING THIS DAY YOUR GAMMA CHI WILL FINALLY REVEAL WHAT SORORITY SHE IS IN AND YOU WILL OFFICIALLY BE WELCOMED INTO THE PANHELLENIC COMMUNITY AS A NEW MEMBER.**

## What to Wear

**THIS DAY IS EVEN MORE RELAXED THAN THE FIRST. WEAR SOMETHING CASUAL SUCH AS AN ATHLETIC SKIRT OR SHORTS WITH A T-SHIRT OR TANK. CASUAL SHOES SUCH AS SNEAKERS ARE A MUST. YOU WILL RECEIVE A UNIFORM T-SHIRT TO CHANGE INTO AFTER RUNNING HOME!**



# Recruitment Dos & Do Not's

## Dos

- **ATTEND ALL GAMMA CHI MEETINGS AS THEY CONTAIN IMPORTANT INFORMATION**
- **ATTEND ALL EVENTS YOU ARE INVITED TO EACH DAY. ANY UNEXCUSED ABSENCE WILL CAUSE YOU TO BE REMOVED FROM THE RECRUITMENT PROCESS**
- **WEAR YOUR NAME TAG AND "GO GREEK" BUTTON AT ALL TIMES WHEN ATTENDING RECRUITMENT EVENTS**
- **INFORM YOUR GAMMA CHI AND/OR RECRUITMENT STAFF IF AN EMERGENCY ARISES AND REPORT ANY SCHEDULING CONFLICTS TO YOUR GAMMA CHI OR RECRUITMENT STAFF IN ADVANCE OF AN ANTICIPATED ABSENCE.**
- **ASK QUESTIONS! MAKE SURE TO ASK QUESTIONS WHEN YOU DO NOT UNDERSTAND. GAMMA CHI'S AND RECRUITMENT STAFF ARE HAPPY TO HELP YOU THROUGH THE PROCESS.**
- **BE POLITE AND RESPECTFUL WHEN ATTENDING EVENTS.**
- **BE HONEST! TELL THE SORORITIES ABOUT YOUR INTERESTS, HOBBIES, OR ACCOMPLISHMENTS. THE SORORITY MEMBERS ARE EXCITED ABOUT MEETING YOU AND GETTING TO KNOW YOU. ALSO, TELL THE CHAPTER MEMBERS IF YOU ARE GENUINELY ENJOYING BEING THERE OR REALLY FEEL THAT YOU FIT IN, THEY WANT TO HEAR THIS POSITIVE REACTION FROM YOU!**

# Recruitment Dos & Do Not's

## Do Not's

- **STAY GLUED TO YOUR CELL PHONE, YOU WILL BE BUSY ENOUGH MAKING NEW FRIENDS AND MOVING FROM EVENT TO EVENT.**
- **BE LATE! WE DO OUR BEST TO KEEP A STRICT SCHEDULE; PLEASE DO THE SAME**
- **GO IN WITH YOUR HEART SET IN ON ONE SORORITY. KEEP AN OPEN MIND! YOU MAY NOT BE FAMILIAR WITH ALL SORORITIES, SO TAKE TIME TO CONSIDER MEMBERSHIP IN EACH GROUP. EVERY SORORITY OFFERS SOMETHING UNIQUE. ALSO, CONSIDER THAT BEING A LEGACY OF A GROUP DOES NOT ENSURE MEMBERSHIP IN THAT GROUP.**
- **PARTICIPATE IN UNSANCTIONED EVENTS DURING RECRUITMENT THAT INCLUDE MEN, DRUGS, AND/OR ALCOHOL. PARTICIPATING IN SUCH EVENTS WILL CAUSE YOU TO BE REMOVED FROM THE RECRUITMENT PROCESS.**
- **COMMUNICATE WITH OR ACCEPT GIFTS FROM CURRENT OR ALUMNAE SORORITY MEMBERS. SILENCE IS IN EFFECT AND THEY SHOULD NOT PRESSURE OR INFLUENCE YOU DURING THIS TIME. IF SOMEONE DOES CONTACT YOU THROUGH ANY MEDIA OR BUYS YOU ANYTHING (INCLUDING MEALS) PLEASE LET YOUR GAMMA CHI KNOW.**
- **TALK ABOUT OTHER HOUSES. YOU NEVER KNOW WHO HAS FRIENDS WHERE.**
- **BE DISRESPECTFUL! WKU PANHELLENIC EMPLOYS A "THREE-STRIKE RULE" REGARDING UNACCEPTABLE BEHAVIOR DURING RECRUITMENT. NOT FOLLOWING THIS RULE COULD RESULT IN BEING REMOVED FROM RECRUITMENT. THIS WILL BE DISCUSSED WITH YOUR GAMMA CHI.**

# Alpha Delta Pi

**CHAPTER NAME:** EPSILON DELTA

**ESTABLISHED ON CAMPUS:** 1965

**FOUNDING DATE:** MAY 18TH 1851

**COLORS:** AZURE BLUE AND WHITE

**PHILANTHROPY:** : RONALD MCDONALD HOUSE CHARITIES

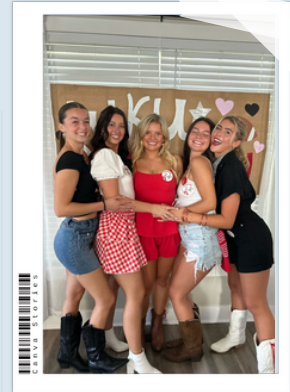
**INSTAGRAM:** : @WKUADPI

**SEMESTER FINANCIAL REQUIREMENTS:** NEW MEMBER \$1,081  
ACTIVE MEMBER \$515

**ACADEMIC REQUIREMENTS:** HIGH SCHOOL GPA 3.0 | COLLEGE GPA 2.8

**HOUSING REQUIREMENTS:** ONLY SOME EXECUTIVE COUNCIL MEMBERS

*Notes*





# Alpha Gamma Delta

**CHAPTER NAME:** THETA IOTA

**ESTABLISHED ON CAMPUS:** 1989

**FOUNDING DATE:** MAY 30TH, 1904

**COLORS:** RED, BUFF, & GREEN

**PHILANTHROPY:** FIGHTING HUNGER IN NORTH AMERICA &  
THE ALPHA GAMMA DELTA FOUNDATION

**INSTAGRAM:** @WKUALPHAGAM

**SEMESTER FINANCIAL REQUIREMENTS:** NEW MEMBER \$1,090  
ACTIVE MEMBER \$625

**ACADEMIC REQUIREMENTS:** HIGH SCHOOL GPA 3.0 | COLLEGE GPA 3.0

**HOUSING REQUIREMENTS:** NONE

*Notes*



# Alpha Omicron Pi

**CHAPTER NAME: ALPHA CHI**

**ESTABLISHED ON CAMPUS: 1965**

**FOUNDING DATE: JANUARY 2ND, 1897**

**COLORS: CARDINAL RED**

**PHILANTHROPY: ARTHRITIS FOUNDATION**

**INSTAGRAM: @WKUA011**

**SEMESTER FINANCIAL REQUIREMENTS: NEW MEMBER \$891  
ACTIVE MEMBER \$747**

**ACADEMIC REQUIREMENTS: HIGH SCHOOL GPA 3.0 | COLLEGE GPA 2.8**

**HOUSING REQUIREMENTS: ONLY SOME EXECUTIVE COUNCIL MEMBERS**

*Notes*



# Alpha Xi Delta

**CHAPTER NAME:** EPSILON KAPPA

**ESTABLISHED ON CAMPUS:** 1965

**FOUNDING DATE:** APRIL 17TH, 1893

**COLORS:** DOUBLE BLUE & GOLD

**PHILANTHROPY:** KINDLY HEARTS INITIATIVE & THE BOYS  
AND GIRLS CLUB OF BOWLING GREEN

**INSTAGRAM:** @ALPHAXIDELTAWKU

**SEMESTER FINANCIAL REQUIREMENTS:** NEW MEMBER \$1,030  
ACTIVE MEMBER \$670

**ACADEMIC REQUIREMENTS:** HIGH SCHOOL GPA 3.0 | COLLEGE GPA 2.8

**HOUSING REQUIREMENTS:** NONE

*Notes*



# Chi Omega

**CHAPTER NAME:** CHI THETA

**ESTABLISHED ON CAMPUS:** 1965

**FOUNDING DATE:** APRIL 5TH, 1895

**COLORS:** CARDINAL & STRAW

**PHILANTHROPY:** MAKE-A-WISH FOUNDATION  
& THE BOYS & GIRLS CLUB

**INSTAGRAM:** @CHIOMEGAWKU

**SEMESTER FINANCIAL REQUIREMENTS:** NEW MEMBER \$745  
ACTIVE MEMBER \$635

**ACADEMIC REQUIREMENTS:** HIGH SCHOOL GPA 3.0 | COLLEGE GPA 2.8

**HOUSING REQUIREMENTS:** EXECUTIVE COUNCIL MEMBERS

*Notes*



# Delta Zeta

CHAPTER NAME: **PI CHI**

ESTABLISHED ON CAMPUS: **2015**

FOUNDING DATE: **OCTOBER 24TH, 1902**

COLORS: **ROSE & GREEN**

PHILANTHROPY: **SPEECH & HEARING**

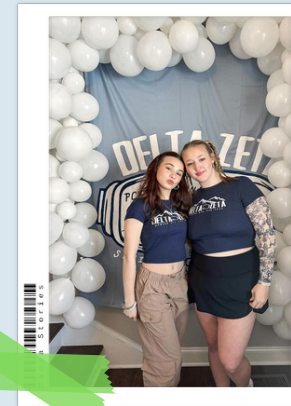
INSTAGRAM: **@WKUDZ**

SEMESTER FINANCIAL REQUIREMENTS: **NEW MEMBER \$709**  
**ACTIVE MEMBER \$886**

ACADEMIC REQUIREMENTS: **HIGH SCHOOL GPA 2.5 | COLLEGE GPA 2.75**

HOUSING REQUIREMENTS: **ONLY SOME EXECUTIVE COUNCIL MEMBERS**

*Notes*



# Kappa Delta

**CHAPTER NAME:** DELTA GAMMA

**ESTABLISHED ON CAMPUS:** 1965

**FOUNDING DATE:** OCTOBER 23RD, 1897

**COLORS:** OLIVE GREEN & PEARL WHITE

**PHILANTHROPY:** PREVENT CHILD ABUSE AMERICA &  
GIRL SCOUTS OF AMERICA

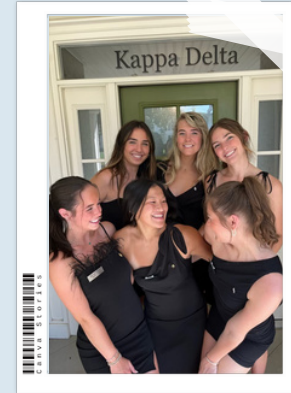
**INSTAGRAM:** @WKUKD

**SEMESTER FINANCIAL REQUIREMENTS:** NEW MEMBER \$1,038  
ACTIVE MEMBER \$805

**ACADEMIC REQUIREMENTS:** HIGH SCHOOL GPA 3.1 | COLLEGE GPA 2.8

**HOUSING REQUIREMENTS:** EXECUTIVE COUNCIL MEMBERS

*Notes*



# Omega Phi Alpha

**CHAPTER NAME:** *RHO*

**ESTABLISHED ON CAMPUS:** *1993*

**FOUNDING DATE:** *JUNE 15TH, 1967*

**COLORS:** *DARK BLUE, LIGHT BLUE, & GOLDEN YELLOW*

**PHILANTHROPY:** *ST. BALDRICKS & HOPE HEART INSTITUTE*

**INSTAGRAM:** *@WKUOPHIA*

**SEMESTER FINANCIAL REQUIREMENTS:** *NEW MEMBER \$275  
ACTIVE MEMBER \$250*

**ACADEMIC REQUIREMENTS:** *HIGH SCHOOL GPA 3.0 | COLLEGE GPA 2.7*

**HOUSING REQUIREMENTS:** *NONE*

*Notes*



# Phi Mu

**CHAPTER NAME:** DELTA TAU

**ESTABLISHED ON CAMPUS:** 1965

**FOUNDING DATE:** MARCH 4TH, 1852

**COLORS:** ROSE & WHITE

**PHILANTHROPY:** CHILDREN'S MIRACLE NETWORK HOSPITALS

**INSTAGRAM:** @WKUPHIMU

**SEMESTER FINANCIAL REQUIREMENTS:** NEW MEMBER \$1,000  
ACTIVE MEMBER \$650

**ACADEMIC REQUIREMENTS:** HIGH SCHOOL GPA 3.0 | COLLEGE GPA 2.8

**HOUSING REQUIREMENTS:** ONLY SOME EXECUTIVE COUNCIL MEMBERS

*Notes*





# Sigma Alpha

CHAPTER NAME: **BETA SIGMA**

ESTABLISHED ON CAMPUS: **2014**

FOUNDING DATE: **JANUARY 26TH, 1978**

COLORS: **EMERALD & MAIZE**

PHILANTHROPY: **THE KY FFA FOUNDATION**

INSTAGRAM: **@WKU\_SIGMAALPHA**

SEMESTER FINANCIAL REQUIREMENTS: **NEW MEMBER \$300**  
**ACTIVE MEMBER \$250**

ACADEMIC REQUIREMENTS: **HIGH SCHOOL GPA 2.5 | COLLEGE GPA 2.5**

HOUSING REQUIREMENTS: **NONE**

*Notes*



# Sigma Kappa

CHAPTER NAME: *EPSILON ZETA*

ESTABLISHED ON CAMPUS: *1965*

FOUNDING DATE: *NOVEMBER 9TH, 1874*

COLORS: *LAVENDER & MAROON*

PHILANTHROPY: *SIGMA KAPPA FOUNDATION, INHERIT THE EARTH, GERONTOLOGY, MAINE SEA COAST MISSION, & ALZHEIMER'S ASSOCIATION*

INSTAGRAM: *@WKUSIGMAKAPPA*

SEMESTER FINANCIAL REQUIREMENTS: *NEW MEMBER \$1,093  
ACTIVE MEMBER \$660*

ACADEMIC REQUIREMENTS: *HIGH SCHOOL GPA 2.8 | COLLEGE GPA 2.5*

HOUSING REQUIREMENTS: *NONE*

*Notes*



# FAQ's

## ***How Will Greek Life Affect My Grades?***

GREEK LIFE AT WKU RECOGNIZES THAT THEIR MEMBERS ARE STUDENTS FIRST. SORORITIES HOLD MEMBERS ACCOUNTABLE FOR THEIR ACADEMICS BY HOSTING STUDY SESSIONS, OFFERING INCENTIVES BASED ON GPA, AND BY RECOGNIZING AND REWARDING OUTSTANDING ACADEMIC PERFORMANCE.

## ***Are There Leadership Opportunities Within Sororities?***

YES! WKU SORORITIES OFFER SEVERAL OPPORTUNITIES TO GET INVOLVED IN LEADERSHIP BOTH IN AND OUT OF THEIR CHAPTER.

## ***What is the Financial Commitment Associated with Sororities?***

JOINING A SORORITY DOES CARRY A FINANCIAL COMMITMENT. EACH CHAPTER IS SELF-SUPPORTING WITH REVENUE COMING FROM MEMBERS WHO PAY DUES. WHEN STUDENTS JOIN A GREEK LETTER ORGANIZATION, THEY AGREE TO PAY DUES AND FEES IN ORDER TO MAINTAIN MEMBERSHIP. WHILE MEMBERSHIP IS AFFORDABLE, SOME CHAPTERS ARE ABLE TO MAKE ACCOMMODATIONS FOR SPECIAL CIRCUMSTANCES, BUT STUDENTS SHOULD DISCUSS THE FINANCIAL OBLIGATIONS WITH YOU BEFORE THEY JOIN.



# Mutual Selection

FORMAL RECRUITMENT IS STRUCTURED AROUND A MUTUAL SELECTION PROCESS. DURING THE FIRST ROUND OF FORMAL RECRUITMENT, GO GREEK, YOU WILL ATTEND A BRIEF PARTY HELD BY EACH CHAPTER. AT THE END OF THE DAY, YOU WILL RANK CHAPTERS YOU VISITED. KEEP IN MIND HOW YOU FELT AT EACH SORORITY'S PARTY AND LOOK THROUGH ANY NOTES TAKEN THAT DAY. NOTES ARE EXTREMELY HELPFUL THROUGHOUT THE RECRUITMENT PROCESS. THINK ABOUT WHICH CHAPTERS WOULD BE THE BEST FIT WITH YOUR VALUES AND INTERESTS.

WHEN YOU MEET WITH YOUR GAMMA CHI FOR THE NEXT DAY'S EVENTS, YOU WILL RECEIVE A SCHEDULE OF PARTIES YOU WILL ATTEND. UNLESS EXTENUATING CIRCUMSTANCES ARISE, YOU MUST ATTEND EVERY PARTY ON YOUR SCHEDULE.

JUST AS YOU MUST CHOOSE WHICH CHAPTERS YOU PREFER THE MOST, THE SORORITIES MUST ALSO LIMIT THE NUMBER OF WOMEN THEY INVITE FOR THE NEXT DAY'S EVENTS. THEREFORE, SOMETIMES A POTENTIAL NEW MEMBER MAY NOT BE SELECTED FOR THE NEXT DAY'S ROUND.

AFTER PREFERENCE NIGHT YOU WILL BE GIVEN THE OPPORTUNITY TO INDICATE THE SORORITIES FROM WHICH YOU WOULD ACCEPT AN INVITATION OR JOIN AND GIVE YOUR FIRST AND SECOND PREFERENCE BETWEEN THOSE SORORITIES. YOUR PREFERENCE WILL BE COMPARED TO THE SORORITIES PREFERENCES.

# Membership Acceptance

## 1. YOUR OPINION WHEN CONSIDERING YOUR AGREEMENT ARE:

- YOU MAY CHOOSE NOT TO COMPLETE AN AGREEMENT AT THIS TIME.
- YOU MAY CHOOSE TO LIST ANY SORORITY WHOSE PREFERENCE PARTY YOU ATTEND AND FROM WHOM YOU ARE WILLING TO ACCEPT AN INVITATION TO MEMBERSHIP (BID) FROM.

## 2. WHEN YOU SIGN THE ACCEPTANCE AGREEMENT, YOU ARE AGREEING TO ACCEPT AN INVITATION TO MEMBERSHIP AND TO THE NPC WOMEN'S FRATERNITY/SORORITY YOU HAVE LISTED.

## 3. ONCE THE ACCEPTANCE AGREEMENT HAS BEEN TURNED IN TO THE REPRESENTATIVE OF THE COLLEGE PANHELLENIC ASSOCIATION, IT CANNOT BE ALTERED OR CHANGED.

## 4. IF YOU RECEIVE AN INVITATION TO MEMBERSHIP (BID) FROM ANY NPC GROUP THAT YOU HAVE LISTED , AND CHOOSE NOT TO ACCEPT IT, YOU MAY NOT PLEDGE ANY OTHER NPC WOMEN'S FRATERNITY/SORORITY ON THE CAMPUS UNTIL THE NEXT FORMAL SORORITY RECRUITMENT PROCESS.


- IF YOU DO NOT RECEIVE AN INVITATION TO MEMBERSHIP (BID) FROM ANY NPC GROUP THAT YOU HAVE LISTED, YOU ARE ELIGIBLE FOR CONTINUOUS OPEN BIDDING (COB). YOU MUST UNDERSTAND THAT NOT ALL NPC GROUPS WILL HAVE AVAILABLE PLACES FOR NEW MEMBERS DURING THE COB PROCESS

# *Sorority Recruitment*

**FORMAL RECRUITMENT IS THE MAIN PROCESS THAT THE NATIONAL PANHELLENIC CONFERENCE SORORITIES AT WKU USE TO RECRUIT NEW MEMBERS. THE WEEK CONSISTS OF A RECRUITMENT ORIENTATION AND FOUR ROUNDS OF PARTIES WHICH ALLOW POTENTIAL NEW MEMBERS THE OPPORTUNITY TO LEARN ABOUT EACH SORORITY AT WKU. DURING THE RECRUITMENT PARTIES, WOMEN WILL HAVE TIME TO ASK QUESTIONS ABOUT SORORITY ACTIVITIES, FINANCIAL OBLIGATIONS, NEW MEMBER PROGRAMS, SCHOLARSHIPS, COMMUNITY SERVICE AND SORORITY LIFE IN GENERAL.**

**IT IS IMPORTANT TO RECOGNIZE THAT FORMAL RECRUITMENT IS A MUTUAL PROCESS. ALL WOMEN WILL VISIT EACH SORORITY DURING THE FIRST ROUND (GO GREEK), BUT THE REMAINING ROUNDS ARE BY INVITATION ONLY. JUST AS SORORITIES ARE NARROWING THE NUMBER OF WOMEN ATTENDING EACH ROUND OF PARTIES, POTENTIAL NEW MEMBERS MAY ONLY ACCEPT A CERTAIN NUMBER OF INVITATIONS TO EACH ROUND.**

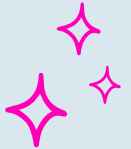
**PARTICIPATION IN FORMAL RECRUITMENT DOES NOT GUARANTEE AN INVITATION TO JOIN A SORORITY, NOR DOES IT OBLIGE A WOMEN TO JOIN.**



**TO SIGN UP, GO TO [WWW.WKU.EDU/WKU GREEKS](http://WWW.WKU.EDU/WKU_GREEKS), THEN CHOOSE SORORITY RECRUITMENT ONLINE REGISTRATION FORM AND COMPLETE THE APPLICATION - THERE IS A \$55 FEE TO PARTICIPATE IN SORORITY RECRUITMENT. WE RECOMMEND YOU SUBMIT A TRANSCRIPT TO AVOID ANY CONFUSION REGARDING GRADES. FOR THOSE THAT DON'T SUBMIT A HIGH SCHOOL TRANSCRIPT, WE WILL USE THE UNWEIGHTED HIGH SCHOOL GPA THAT WE HAVE ON FILE FOR WKU. YOU CAN SUBMIT YOUR HIGH SCHOOL TRANSCRIPT TO:**

***STUDENT ACTIVITIES OFFICE  
WESTERN KENTUCKY UNIVERSITY  
1906 COLLEGE HEIGHTS BLVD, #11044  
BOWLING GREEN, KY 42101 - 1044***

**A RECOMMENDATION SERVES AS A LETTER OF INTRODUCTION OF A WOMAN TO A SORORITY IN ORDER TO HELP THE SORORITY MEMBERS BECOME ACQUAINTED WITH HER BEFORE THE RECRUITMENT PROCESS BEGINS. ALTHOUGH A RECOMMENDATION IS NOT REQUIRED, SORORITIES APPRECIATE AND USE THIS INFORMATION TO ASSIST IN THEIR RECRUITMENT PROCESS**



# National Panhellenic Conference Creed

**WE, AS UNDERGRADUATE MEMBERS OF WOMEN'S FRATERNITIES, STAND FOR GOOD SCHOLARSHIP, FOR GUARDING OF GOOD HEALTH, FOR A MAINTENANCE OF HIGH STANDARDS, AND FOR SERVING, TO THE BEST OF OUR ABILITY, OUR COLLEGE COMMUNITY. COOPERATION FOR FURTHERING FRATERNITY LIFE, IN HARMONY WITH ITS BEST POSSIBILITIES, IS THE IDEAL THAT SHALL GUIDE OUR FRATERNITY ACTIVITIES.**

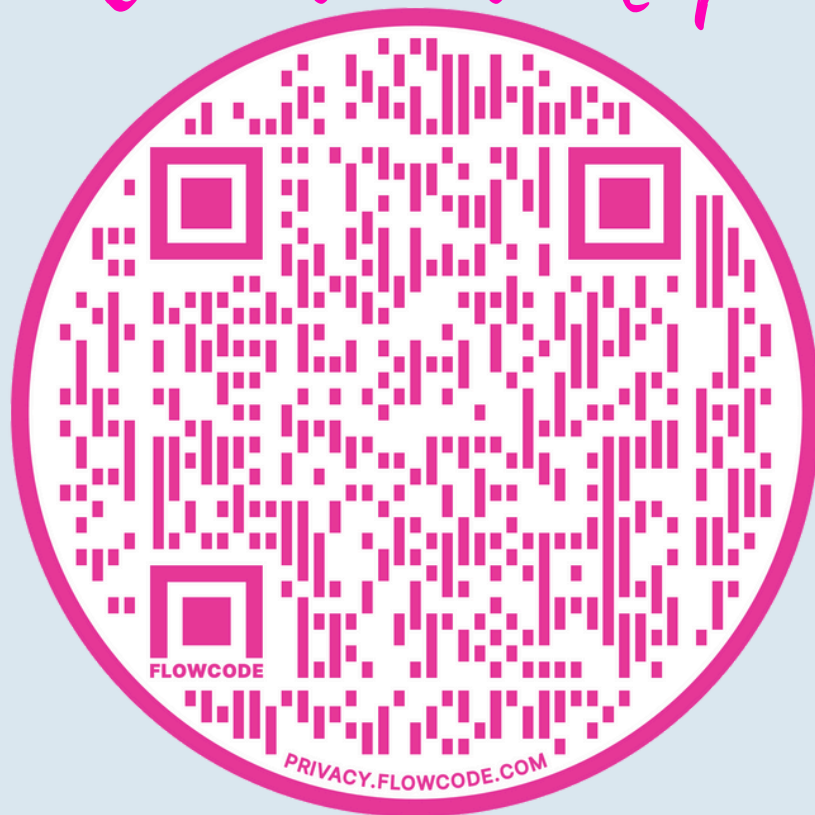
**WE, AS FRATERNITY WOMEN, STAND FOR SERVICE THROUGH THE DEVELOPMENT OF CHARACTER, INSPIRED BY THE CLOSE CONTACT AND DEEP FRIENDSHIP OF INDIVIDUAL FRATERNITY AND PANHELLENIC LIFE. THE OPPORTUNITY FOR WIDE AND WISE HUMAN SERVICE, THROUGH MUTUAL RESPECT AND HELPFULNESS, IS THE TENET BY WHICH WE STRIVE TO LIVE.**



# *PNM's Bill of Rights*

- **THE RIGHT TO BE TREATED AS AN INDIVIDUAL**
- **THE RIGHT TO BE FULLY INFORMED ABOUT THE RECRUITMENT PROCESS**
- **THE RIGHT TO ASK QUESTIONS AND RECEIVE TRUE OBJECTIVE ANSWERS FROM RECRUITMENT COUNSELORS AND MEMBERS**
- **THE RIGHT TO BE TREATED WITH RESPECT**
- **THE RIGHT TO BE TREATED AS A CAPABLE AND MATURE PERSON WITHOUT BEING PATRONIZED**
- **THE RIGHT TO ASK HOW AND WHY AND RECEIVE STRAIGHT ANSWERS**
- **THE RIGHT TO HAVE AND EXPRESS OPINIONS TO RECRUITMENT COUNSELORS**
- **THE RIGHT TO HAVE INDIVIDUAL CONFIDENTIALITY WHEN SHARING INFORMATION WITH RECRUITMENT COUNSELORS**
- **THE RIGHT TO BE FULLY INFORMED ABOUT THE NPC UNANIMOUS AGREEMENTS IMPLICIT IN THE MEMBERSHIP RECRUITMENT ACCEPTANCE BINDING AGREEMENT (MRABA) AND ACCEPTANCE PROCESS**
- **THE RIGHT TO MAKE ONE'S OWN CHOICE AND DECISION AND ACCEPT FULL RESPONSIBILITY FOR THE RESULTS OF THAT DECISION**
- **THE RIGHT TO HAVE A POSITIVE, SAFE, AND ENRICHING RECRUITMENT AND NEW MEMBER EXPERIENCE**

# Recruitment Map



# Stay Connected



**@WKUPANHELLENIC**  
**@WKURECRUITMENT**



**[HTTPS://WWW.WKU.EDU/WKUGREEKS](https://www.wku.edu/wkugreeks)**



**@WKU PANHELLENIC ASSOCIATION**

