



Newsletter
Spring 2022

SOCIAL WORK LEADER

DEPARTMENT HEAD REFLECTIONS

Dr. Trish Desrosiers, LCSW

Dear WKU Social Work Community,

I will forever call Spring 2020-Spring 2022 the Time of Great Change to remember the sweeping changes occurring at light speed in the social work profession, in education, and our society at large. Since the COVID 19 global pandemic began, society has been unable to ignore the social justice issues exacerbated by the health crisis! These injustices include ongoing racism, glaring health disparities, a widening digital divide, and an ever-widening economic gap between the haves and the have nots among many others. I am hopeful that our society will overcome these challenges; however, I am certain that in order for that to occur, social workers need to be at all tables where decisions are made! As social workers, we must address policies and procedures that are unfair or discriminatory no matter where they are occurring, and we can only do that AT THE TABLE. We must push ourselves into the places where decisions are being made without apology. We must speak up for the well being of oppressed populations in all contexts no matter how uncomfortable it gets!

Our department has seen a multitude of changes over the past few years including seasoned faculty retirements (Dr. Dean May, Dr. Saundra Starks), a resignation (Field Director McIntyre), and a death (Instructor Sandy McClain). We have also welcomed some new full-time faculty including Ms. Monica Hines, Ms. Lynn Hazlett, and most recently Field Director Dr. Shannon Sales as well as several part-time faculty members. We have had staff changes with our newest staff members Bailey Cooke and Emily Lindsey coming on board in fall of 2021. There have been programmatic changes including the closures of the Training Resource Center Grant and the Credit for Learning Program this summer as well as the creation of a BSW Online Program and a Child Welfare Education and Research Center. These new programs will continue to compliment the important work we do with our MSW hybrid, MSW online, and BSW online and BSW regional campus programs.

As a department working diligently to fill the regional, state and national need for social workers, our teams continue to be dedicated to providing accessible high quality social work education. We appreciate your interest in the WKU Social Work Department, and we hope this newsletter sharing our recent departmental happenings finds you well. Please do not hesitate to share your student, alumni, faculty, and staff accomplishments to the WKUSocialWork@wku.edu email account so that we can recognize you in our next newsletter!



MEET OUR TEAM

- Department Head
Dr. Patricia Desrosiers, LCSW
- MSW Program Director (Interim)
Dr. Amy Cappiccie, LCSW
- MSW Online Program Coordinator/
Interim Field Director *Spring 2022*
Dr. Erin Warfel, LCSW
- MSW Field Director
Dr. Shannon Sales, MSW
- BSW Program Director/
Acting Department Head *Spring 2022*
Dr. Simon Funge, MSW
- BSW Online Program Coordinator
Dr. Gayle Mallinger, MSW
- BSW Field Director *Effective June 1, 2022*
Allison Gibson, MSSW
- Office Coordinator
Sheryl Hagan-Booth



Dr. Simon Funge

In Spring 2022, Dr. Simon Funge is fulfilling Dr. Desrosiers's duties as Acting Department Head while she is on a well-deserved sabbatical.

Honoring Social Work Faculty Members



Dr. Saundra Starks, LCSW

Dr. Saundra Starks retired in Spring 2021. She served WKU in many capacities over 38 years including working at the WKU Counseling Center, the

Suzanne Vitale CEC, and in the Department of Social Work. She has impacted thousands of lives on our campus and beyond. Always quick to step in and help, Dr. Starks has and continues to serve as a mentor and role model for both students and faculty. She has a strong history of service in leadership positions on local, state, and national boards including the Bowling Green Annual Community Kwanzaa Program, the International Center, the National Association of Social Workers (NASW), the Council on Social Work Education

(CSWE), and the Association of Social Work Boards (ASWB). The last three professional organizations heavily influence social work practice, education, and licensure across the US. In addition, Dr. Starks taught and researched in Tanzania, Taiwan, Belize, and Ghana making her a global expert in the areas of cultural competency, mentorship of women, and leadership. Dr. Starks was instrumental in the creation of WKU's MSW Program as well as co-creating the NASW Cultural Competency Standards used by professional social workers across the country. Over the years, Dr. Starks has shaped not only WKU's Department of Social Work but also the profession of social work. Her remarkable record of service, teaching, and scholarship reflects her clear commitment to social justice, women of color, and cultural competency. Based upon her strong legacy of social work passion and influence, the Department thanks and appreciates her for her years of service. Her retirement and her appointment to Emeritus faculty is well deserved!



Dr. Dean May

Dr. Dean May retired from WKU in Spring 2021. He served as a leader in the Department of Social Work since 1996 when he became BSW Program Director.

Subsequently, he grew the program and was instrumental in developing a new MSW Program. Dr. May's foresight and diligence was a boon for our Department and WKU. Ever alert to possibilities, he secured several lucrative grants and training programs bringing in millions of dollars in external funding to the university. Programs like the Credit for Learning Program (CFL), the Public Child Welfare Certification Program (PCWCP), and the Training Resource Center (TRC) have been fundamental in developing the child welfare workforce in Kentucky. At WKU, we have annually trained fully 1/3 of all public child welfare workers in the state and provide scholarships for undergraduate students seeking to work in the public child welfare sector. These programs have been incredibly important to our region and our state where social workers are in short supply. Like Dr. Starks, Dr. May was a great mentor to many of our faculty. He hired a number of successful faculty members and developed staff members who continued their educations or moved into more prominent positions at WKU. As the current department head, Dr. Desrosiers counts herself as a beneficiary of Dr. May's wisdom and knowledge and his steadfast support, influence, and patience. He poured his heart and soul into the Department and the people he mentored. Under his leadership, Social Work has always been a place to grow and flourish. Based upon the indelible mark Dean has left upon both the Department of Social Work and the WKU, he will be sorely missed!

Remembering Sandy McClain



Sandy McClain, CSW was hired as a full-time Instructor in the BSW Program in Fall 2021. Unfortunately, Sandy passed on December 30, 2021 after a short struggle with lung cancer. She is survived by three daughters, seven grandchildren, and many siblings. Sandy was a diehard WKU fan, and she was extremely happy to be working in her "dream job" as a full-time instructor following nine years of part-time teaching for the Department. Sandy's visitation was a tribute to her love for WKU. All of her WKU degrees and awards were displayed by her casket and she was even buried in her WKU shirt! Not only was Sandy a wonderful teacher, she was an excellent social worker who was able to bring her love for the profession and her years of practice experience to the classroom. Many students sent messages of appreciation to her family demonstrating her strength as a teacher. She was a great colleague, and she will be missed by the entire Department. Her service to the Department has left a strong legacy of excellence as she has touched the lives of hundreds of students over the years. Please join us in offering a fond farewell to Sandy. WKU's Department of Social Work won't be the same without her!



Field



After more than six incredibly productive years as Field Director, Kellye McIntyre ended her tenure at the end of 2021 to pursue an exciting new opportunity with LifeWorks at WKU.

Each year, she almost single-handedly placed approximately 130-180 BSW and MSW students in a multitude of community agencies across the region. She made significant contributions to our social work students' education and their transition to professional social work practice and will be missed in this role. In addition to coordinating field placements, Kellye introduced Field to a fantastic new field software program, Sonia, diligently working to transition learning plans, midterm forms, and timesheets into this online platform. As well, she developed instructional videos for students and offered live Zoom training sessions with field liaisons and agency field instructors. By all accounts, Sonia is revolutionizing Field and will continue to be expanded to provide a comprehensive application and matching process for social work field placements. Its important to note before becoming Field Director, Kellye was WKU's Training Resource Center (TRC) Director for six years providing training and education services to our region. Her service in both roles was exceptional. Thank you, Kellye, and we hope your new position brings you much joy and fulfillment!

In Kellye's absence, Field is in the capable hands of Dr. Erin Warfel, LCSW as Interim Field Director. She will continue in this role through the Spring 2022 semester. With the help of Monica Hines, MSW and Allison (Allie) Gibson, MSSW, Field is delivering a number of Field Orientations for our students starting placement in Fall

2022. Another important team member is Bailey Cooke, our new Field Office Associate. Hired in July 2021, Bailey has already become a crucial member of the Field team. Testament to Kellye's significant responsibilities and effort (always delivered with patience, grace, professionalism, and wisdom), the Department will now have two Field Directors! On March 1, 2022, Dr. Shannon Sales started as the new MSW Field Director and Allie Gibson will take on the role of BSW Field Director effective June 1, 2022. Each are dynamic and innovative social workers and educators who will be excellent additions to the Field team and will build on the strong foundation Kellye has built. Finally, it is important to thank our many community partners for your work to provide meaningful learning opportunities for our students. In the face of a global pandemic and other community challenges, your unfailing guidance, supervision, and dedication has allowed our students to increase the knowledge, skills, and values our students need to successfully transition to professional practice. THANK YOU!

BSW Program

In Spring 2022, WKU's BSW program will graduate more than 80 new BSW social work professionals. Many will go on to Advanced Standing MSW Programs and we are confident wherever they land or whatever they do next, these new colleagues will make significant contributions to the field and the region.



In Fall 2021, we welcomed 21 students into our new fully Online BSW program option. Led by Dr. Gayle Mallinger as our new Online BSW Program Coordinator, courses in

this program option are delivered asynchronously over 7-8 weeks instead of the traditional 16 weeks while still offering

the same quality education we offer to all our students – wherever they are and however they access their classes. The program affords students maximum flexibility and allows us to reach a larger pool of students in the region and across the country. We anticipate significant growth for this program option! And we continue to serve our regional campuses. In Fall 2021, we developed an innovative joint hybrid program option combining our WKU Owensboro and Elizabethtown cohorts to give these students a unique learning experience.

We have seen several changes in the BSW program faculty and staff over the past year. With Dean May's retirement in Spring 2021, the program lost a giant whose institutional wisdom, enthusiasm for the BSW program, and leadership continue to be missed by colleagues and students alike. However, we were thrilled to welcome Monica Hines as a new BSW Instructor in Fall 2021. She brings valuable experience, insight, and perspective to our students and our team. Sandy McClain also joined us in the Fall as a full-time Instructor. We and our students were privileged to call her colleague and professor before her untimely passing over the winter break. We are confident her legacy will live on in the work of the students she taught this year and in years past. Emily Lindsey, our new MSW/BSW Office Associate, has been an important addition to the team supporting administrative tasks, admissions, and student recruitment and retention efforts. In addition, Bailey Cooke, as Field Office Associate, has been an invaluable help with BSW Field. Though saddened to see her leave her role as Field Director, we are delighted Kellye McIntyre is pursuing a new social work opportunity. The mark she made on Field and the BSW Program will be long-lasting and our program is the better for her many contributions. Finally, we are excited to welcome Allie Gibson as the new BSW Field Director. Coming onboard full-time in Summer 2022, Allie's years of professional and educational experience and insight will be a major asset to Field and the BSW program and will further build upon the strong foundation Kellye built. We are grateful to our office staff, student workers, part-time faculty, field Instructors, task supervisors, and our Field agencies for their indispensable contributions the BSW program.

MSW Program



Dr. Amy Cappiccie, LCSW moved into the role of the MSW Program Director following Dr. Stark's retirement. Lynn Hazlett was welcomed to the

MSW Program as an Instructor to teach primarily diversity, foundation practice, field, and ethics. To continue to provide the student voice in programmatic decisions, Paige Cato (Advanced Standing Part-time Hybrid MSW Student) and Keilah Mills (Advanced Standing Full-time Online MSW Student) are serving as student representatives on the MSW Program Committee. Emily Lindsey joined the MSW Program Team, in the fall semester, as an Office Associate supporting both the MSW and BSW Programs. In November, Cassidy Howard (Advanced Standing Full-time MSW Student) joined the program as a Graduate Assistant (GA) focused on MSW Admissions. This new GA opportunity allows a student to help recruit the next MSW cohort bringing a new perspective to best ways to reach prospective students. The MSW Program is currently recruiting our fall 2022 cohort. We hope that changes to Saturday class times from four hours per class to two hours per class, will help in the recruitment numbers for those that travel distances to attend classes. As noted in the Field Update, Kellye McIntyre moved to a new position and will be missed as a member of our team. Instructor Dr. Erin Warfel, LCSW Online Coordinator, is serving as the Interim Field Director and Dr. Shannon Sales is now the full-time MSW Field Director. In addition, we have an open search for an Associate Professor who will also serve as the next MSW Program Director. While the MSW Program is in a time of transition, the team stays committed to a focus on student success and support.

Faculty Spotlight

Dr. Patricia Desrosiers, LCSW



Dr. Patricia Desrosiers was appointed as a member of the Council on Social Work Education's (CSWE) Commission on Educational Policy (COEP). CSWE is the national

accrediting body for more than 800 social work programs across the country, and this commission works with programs related to educational policy and planning to strengthen and expand CSWE's leadership role in matters of social work education. More information about COEP and CSWE can be found on their website at www.cswe.org.

Dr. Jay Gabbard, MSW



Dr. Jay Gabbard was welcomed as a new member of the Kentucky Faculty Advisory Network (KFAN). In this role, he will contribute important faculty perspectives on state level policies,

initiatives, and priorities in higher education in the state. In addition, he delivered a paper presentation on faculty mental health issues at CSWE's Annual Program Meeting in Orlando, FL this year focused on the types of mental health issues faculty member experience, stressors in academia that can exacerbate mental health symptoms, and services for faculty with psychiatric issues. At the national and international levels, Dr. Gabbard also became a member of CSWE's Commission on Global Social Work Education a group that works with other international organizations to promote international programs and projects and to develop the international dimension in social work curricula.

Dr. Austin Griffiths, CSW



Dr. Austin Griffiths recently published his second textbook, *Statistics for Social Workers: Essential Concepts*, by Cognella Publishing. Taking a practical and reader friendly approach, Griffiths

and Drs. David Royse (University of Kentucky) and Denise Montcalm (University of Nevada, Reno) have developed an ideal resource for social work students and faculty. Designed with robust excerpts from relevant literature, review problems, and discussion questions, *Statistics for Social Workers* is designed to demystify statistics and data analysis for students and help them develop into evidence-based practitioners. Reflecting his commitment to students, he was awarded the 2022 WKU College of Health and Human Services Faculty Excellence in Student Advisement Award! Given to a faculty member in recognition of excellence in advising as evidenced by extensive and effective support of student development in school and broader life contexts, the award recognizes Dr. Griffiths's willingness and commitment to his advisees, knowledge of resources inside and outside of the classroom, participation in committees and organizations, and genuine care for students beyond the classroom setting.

Dr. Daniel Boamah, LCSW



Dr. Daniel Boamah has been selected as a member of the CSWE 2022 cohort of Scholars in Global & Intercultural Competence. Made up of twelve scholars from various universities across

United States, his selection into this prestigious group is attached to grant funding to integrate international content into the social work curriculum. With a growing refugee and immigrant community in southcentral Kentucky, Dr. Boamah plans to incorporate content promoting students' understanding of the global interconnections of oppression for competency in advancing human rights and social, economic, and environmental justice.

New Faculty Spotlight



Monica Hines, MSW earned her MSW at WKU in 2010 and joined the Department of Social Work in 2015 as Director and CEU Coordinator, began teaching part-time in 2016, and become a

full-time Instructor in the BSW Program in 2021. Monica has many years of experience in social services practice including work for the Cabinet for Health & Family Services as a Social Services Clinician and Family Services Supervisor and as a Family Preservation Worker with Community Action of Southern Kentucky. She has taught a variety of courses including the core Child Maltreatment and Child Maltreatment Intervention electives for the Public Child Welfare Certification Program (PCWCP). She is very involved in the National Association of Black Social Workers (ASWB) serving as the past President for South Central KY chapter, is Secretary of the Kentucky Social Welfare Foundation, and recently received an award for her service to CASA. Currently, she is supporting the Field Office placing BSW students in internships for Fall 2022 and is working to complete a doctoral degree in Higher Education Leadership at WKU.



Lynn Hazlett, CSW joined WKU in 2005 in the College of Health & Human Services Dean's Office. She has held several professional staff positions at WKU including her last position as the

Director of Student Academic Services for CHHS. Lynn earned her MSW at WKU in 2010 completing an internship at Rivendell Behavioral Health Hospital. She started teaching CHHS's University Experience course part-time in 2008 and teaching for the Department in 2015. In Fall 2021, she joined the MSW faculty as a full-time Instructor. She serves as a member of Child Studies Advisory Board, is on several MSW Committees, is co-chair of Graduate Student Social Workers (GSSW) and is course lead for two graduate courses. Concurrently, she is working on a doctoral degree in Higher Education Leadership at UK.



Staff Spotlight



Emily Lindsey, MSW/BSW Office Associate, joined the Department at the end of 2021. She assists with organization, administration, and admissions for both programs. Emily is

on her old stomping grounds, as she graduated from WKU with her BSW and a bachelor's degree in Spanish in 2021. Emily worked as a professional social worker at a local non-profit. In her spare time, Emily takes LOTS of naps, tries new foods, enjoys going on walks, being with family, and loves animals with a passion (she has puppy fever!). Fun fact about Emily: She is the 3rd generation left-handed person in her family.



Bailey Cooke, Field Office Associate, graduated from WKU in May 2021 with her bachelor's degree in English Literature and a double minor in Photojournalism and Gender & Woman's

Studies. She worked very closely with Kellye McIntyre in launching Sonia, assisting students in their field placements, and has handled the Department's social media pages. Bailey hopes to earn her master's degree while working at WKU, possibly in English or Library Information and Technologies. In her spare time, she enjoys digital and film photography, reading, and antique shopping. Bailey claims she cannot live without Spencer's coffee shop. Though Bailey does not have background in social work, she reports her eyes have opened to the dedication and selflessness of social workers and the undeniable importance of the field!



Marsha Hopper

We would like to send a big shout out to Marsha Hopper on her 18 years of dedicated service to the Department of Social Work! Marsha began her employment with the Department in 2004 when she was hired as an Office Associate for the Credit for Learning Program (CFL). She has assisted hundreds of Kentucky social workers with enrolling at WKU to obtain their required graduate child welfare training. She is referred to by her colleagues as the "Director of Sunshine" due to her energetic spirit and contagious commitment to student success. Her dedication to WKU, CHHS, and the Department is indisputable. She has assisted in countless graduations, filled in for other office associates, supported the BSW and MSW programs, and served as an Instructor for the University Experience program. Marsha has accepted a new position in the CHHS Dean's Office beginning on July 1, 2022 as one of two Student Wellness Navigators offering health and wellness support to CHHS students. Congratulations Marsha and many thanks for all your years of service to the Department of Social Work!

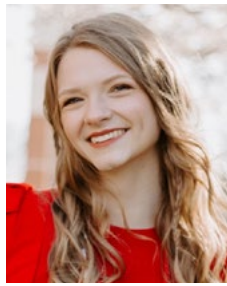
Student Stories

Phi Alpha hosted a fall themed bake sale for their fall service project to raise money to support Afghan refugees at the International Center of Kentucky in Bowling Green. President Kayla Henry, Vice President Hannah West, Secretary Abby Whitlow, and member Lauren Johnson spent two days making over one hundred red velvet cake pops, chocolate chip cookies, frosted sugar cookies, and caramel apples for the fundraiser. In addition, Kayla made a flyer and menu to advertise the bake sale while Hannah oversaw organizing details of the bake sale and creating an information card to inform students, faculty, and staff of WKU on the purpose of the bake sale and other ways that they could support these refugees. Treasurer Gretchen Frommeyer created an Instagram and Twitter page for Phi Alpha @phialpha_wku to advertise the event while Abby helped set up the table and work at it. Phi Alpha Advisor Dr. Gabbard collaborated with the officers to raise over \$200! Organizing and hosting the bake sale helped Phi Alpha's members build their leadership, teamwork, and advocacy skills. The group is eager to host their spring service project and upcoming induction ceremony.

Social Work Student Union (SWSU) Ambassadors have been involved in the community helping to provide services to those impacted by the pandemic as well as other crises. In Fall 2021, SWSU members volunteered at the "In Their Shoes" and interactive program as part of Domestic Violence Awareness month. In addition, members volunteered at Homecoming, donated to Ryan's Outreach food program for people experiencing homelessness, participated in Head for the Hill recruitment events, and participated in self-care activities together. In the Spring, SWSU is planning to collaborate with WKU's Outdoor Recreation Adventure Center (ORAC) to organize events for Social Work students. If you have suggestions or need volunteers or other support for your organization, they are very excited to help!

Graduate Student Social Workers (GSSW) is committed to the values and standards of the profession while developing and delivering needed community and campus service projects. This academic year members assisted with food distribution for Feeding America in Fall 2021 and collected socks that were donated to Ryan's Outreach, a local feeding the homeless program, to be distributed during the Winter months. Among other activities in Spring 2022, GSSW will assist with a self-care event during Social Work Appreciation month. The service group enhances its members' leadership and advocacy skills and is open to all MSW students.

MSW Student Spotlight



Cassidy Howard – admissions recruiter, graduate assistant, and MSW student – was brought on in November 2021 to assist with the MSW admissions process. Cassidy graduated

from Volunteer State Community College with an associate's degree, then received her BSW from WKU. She is now an Advanced Standing MSW student and will graduate in May 2022! After graduation, Cassidy plans to take her licensure exam and apply for jobs all over the US. She wants to work in the adoption/foster care system with hopes to launch her own adoption agency. In her spare time, Cassidy enjoys reading, shopping (a little too much), eating Sushi, watching classic movies, and hanging out with her pets Waylon and Mr. Mitty. Fun fact: Cassidy has a very rare disease called Aquagenic Urticaria, meaning she is allergic to water, rain, pool, ocean, showers, etc. She says it is highly inconvenient!

BSW Student Spotlight



Danielle Myers is a BSW student Ambassador in the Social Work Student Union (SWSU), a member of the CHHS Dean's student advisory committee, and Phi Sigma Pi recruitment

advisor. She came to WKU in fall of 2021 after graduating with her associate's degree from Hopkinsville Community College. Her plan after graduation in 2023 is to open a rehabilitation center that helps all people in crisis situations with a special focus on substance use. She is passionate about helping others find hope! In her spare time, she likes to volunteer, mentor, lead support groups, read, shop, spend time with her dogs Grace & Apollo, and learn new cultures. Fun Fact: Learning something new every day is her hobby!





naswmetrodc.socialworkers.org

Tornado Relief

Our faculty, staff, and students responded to the call for aid following the devastating tornados in December 2021 donating goods, providing service, and raising funds. Organized by Dr. Desrosiers, the National Association of Deans and Directors (NADD) raised critical funds from social work programs across the country that were then distributed to 15 students in need. As well, Dr. Desrosiers volunteered at the Tornado Relief Center conducting intakes for individuals and families impacted by the tornados. Drs. Mallinger and Funge and Dr. Molly Kerby, Assistant Provost, distributed 300 lanterns donated by the Medical Center to families without power in the TC Cherry neighborhood. In support of the displaced refugee population, Dr. Boamah worked

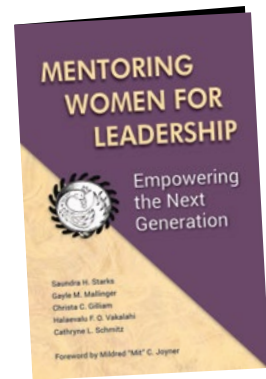
with the Community Partnership for Refugee and Immigrant Families (CPRIF) and provided his clinical expertise on the emotional and physiological impacts on individuals, families, and the community. We were inspired by these and the many other contributions made by faculty, staff, and students. And we were impressed to see how local, state, and federal government agencies, businesses, faith groups, nonprofit organizations, families, and individuals from all segments of the community mobilized to address the need to rebuild - not only damaged infrastructure but also people's lives. The Department of Social Work was pleased to play some small part in this larger effort to help.



Virtual IV-E Roundtable

The Lifeskills Center for Child Welfare Education and Research (LCCWEAR) led a virtual 2021 National Title IV-E Roundtable in May 2021. Attended by more than 200 individuals from across the globe, this free one-day conference was an opportunity to connect, share, and collaborate.

Come and visit us in 2022 as LCCWEAR will host the traditional roundtable on May 17-19, 2022 at the WKU Knicely Conference Center. We are looking forward to seeing you there!



Book by Starks, Mallinger, et al (2021)

Women who lead effectively know the importance of lifting as we climb—of bringing other women along—and that mentoring is a critical component to the leadership development process. To ensure the success of tomorrow's female pioneers, leadership development must start early and continue throughout their academic, social, and emotional development. We must empower women with skills, strengths, and resources, and we must protect the spaces that allow them to develop and grow their leadership skills.

Social work professor emerita, Dr. Sandra Starks, and associate professor, Dr. Gayle Mallinger, co-authored [Mentoring Women for Leadership: Empowering the Next Generation](#).

This book serves as a guide for educators, students, practitioners, and administrators to support the growth and development of female leaders. It provides theoretical frameworks and practical knowledge and skills related to leadership development, including the pipelines and pathways for preparing and supporting women in leadership.