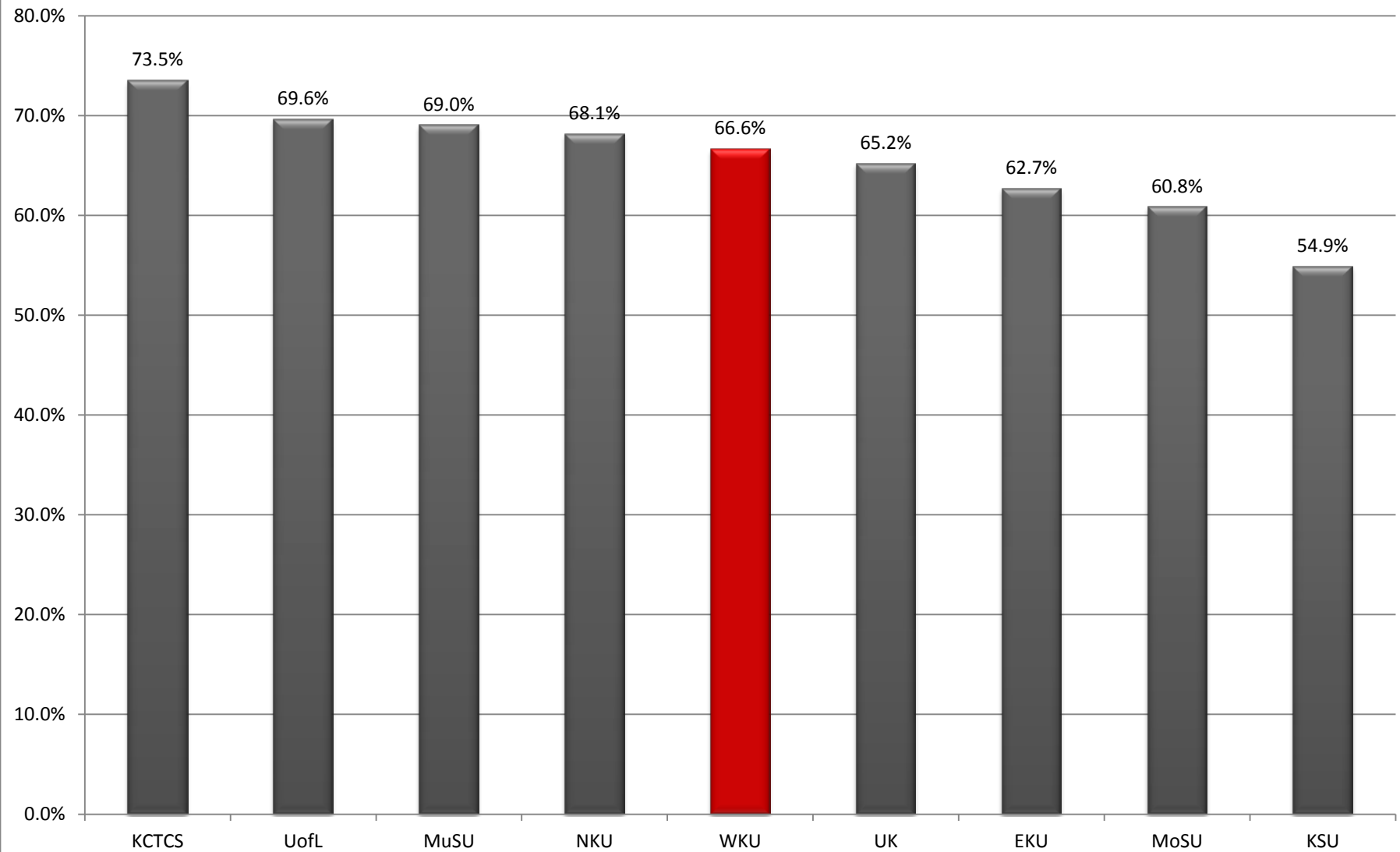


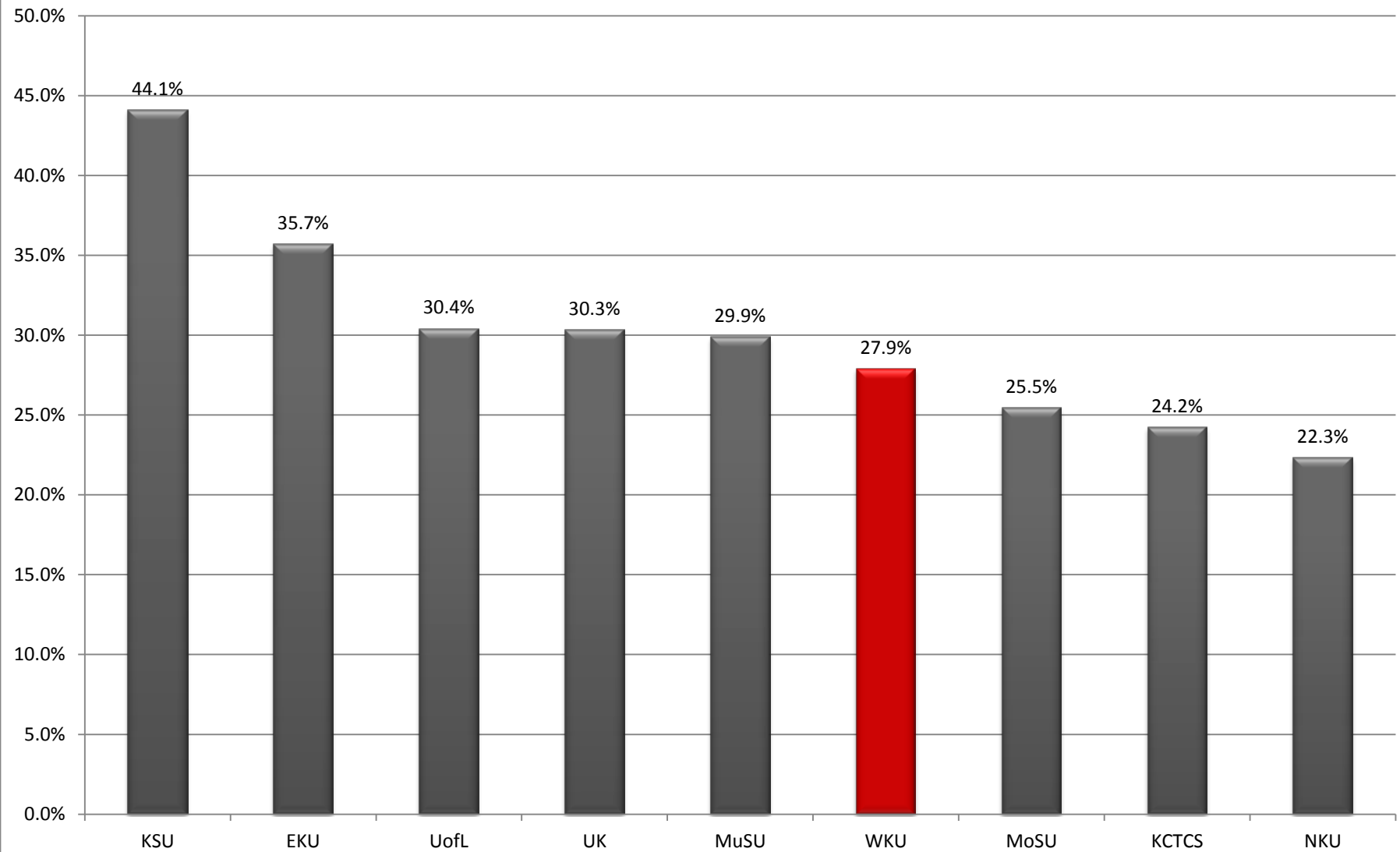
## FY11 Unrestricted Expenses by Institution

### Personnel



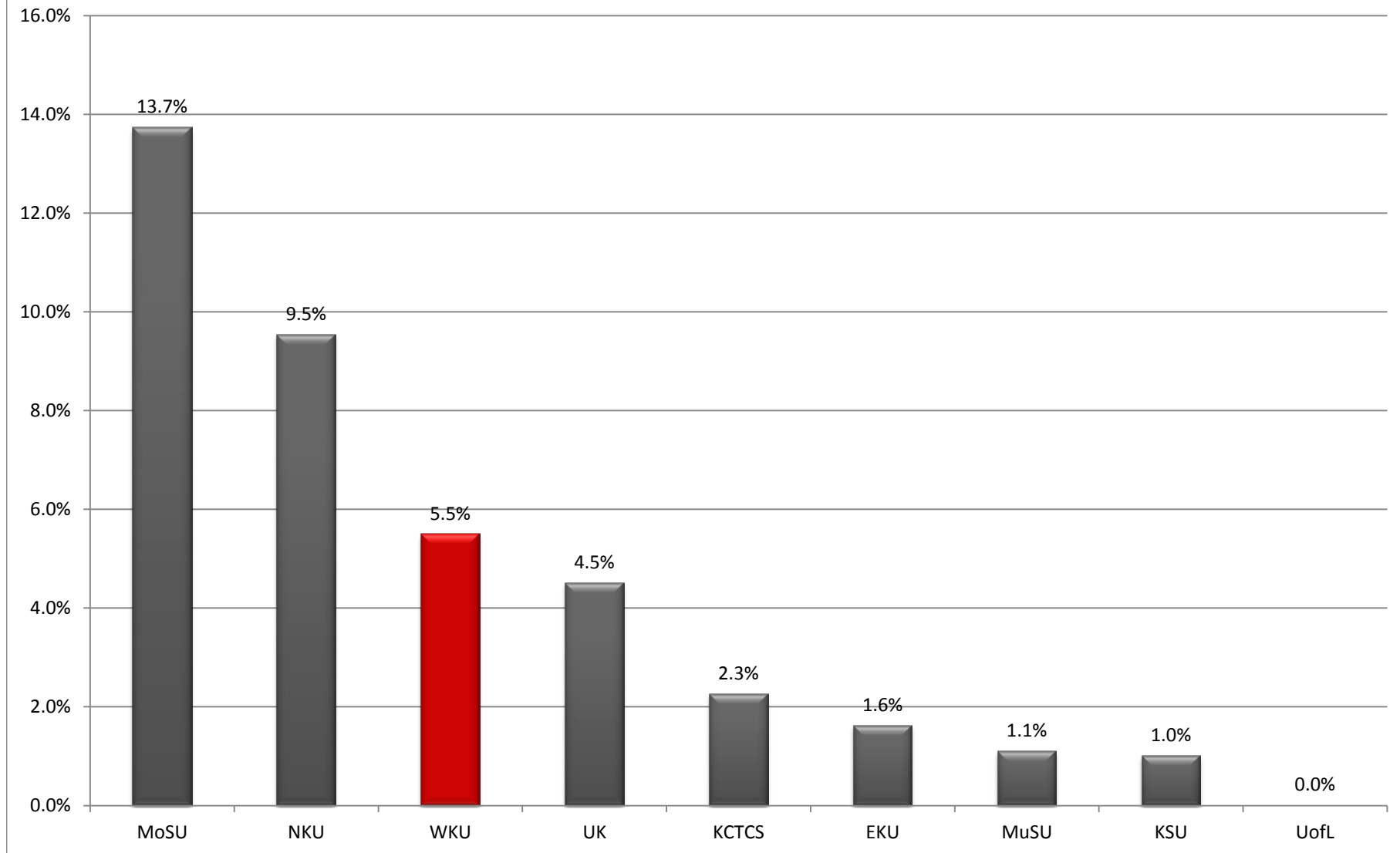
## FY11 Unrestricted Expenses by Institution

### Operating



## FY11 Unrestricted Expenses by Institution

### Capital



	<u>Personnel</u>	<u>% Personnel</u>	<u>Operating</u>	<u>% Operating</u>	<u>Capital</u>
<b>EKU</b>	145,673,700.00	62.7%	82,944,200.00	35.7%	3,750,500.00
<b>KCTCS</b>	320,218,163.00	73.5%	105,650,280.95	24.2%	9,835,419.00
<b>KSU</b>	27,381,500.00	54.9%	21,999,600.00	44.1%	503,000.00
<b>MoSU</b>	74,319,800.00	60.8%	31,104,200.00	25.5%	16,786,200.00
<b>MuSU</b>	95,624,500.00	69.0%	41,401,800.00	29.9%	1,516,900.00
<b>NKU</b>	122,693,200.00	68.1%	40,199,200.00	22.3%	17,161,400.00
<b>UK</b>	1,139,265,100.00	65.2%	529,908,200.00	30.3%	78,677,400.00
<b>UofL</b>	277,131,858.00	69.6%	121,087,190.00	30.4%	-
<b>WKU</b>	167,718,100.00	66.6%	70,240,800.00	27.9%	13,832,100.00

<u>% Capital</u>	<u>Total</u>
1.6%	232,368,400.00
2.3%	435,703,862.95
1.0%	49,884,100.00
13.7%	122,210,200.00
1.1%	138,543,200.00
9.5%	180,053,800.00
4.5%	1,747,850,700.00
0.0%	398,219,048.00
5.5%	251,791,000.00

	<u>Personnel</u>	<u>Personnel</u>
KCTCS	320,218,163.00	73.5%
UofL	277,131,858.00	69.6%
MuSU	95,624,500.00	69.0%
NKU	122,693,200.00	68.1%
WKU	167,718,100.00	66.6%
UK	1,139,265,100.00	65.2%
EKU	145,673,700.00	62.7%
MoSU	74,319,800.00	60.8%
KSU	27,381,500.00	54.9%

	<u>Operating</u>	<u>Operating</u>
KSU	21,999,600.00	44.1%
EKU	82,944,200.00	35.7%
UofL	121,087,190.00	30.4%
UK	529,908,200.00	30.3%
MuSU	41,401,800.00	29.9%
WKU	70,240,800.00	27.9%
MoSU	31,104,200.00	25.5%
KCTCS	105,650,280.95	24.2%
NKU	40,199,200.00	22.3%

	<u>Capital</u>	<u>Capital</u>
MoSU	16,786,200.00	13.7%
NKU	17,161,400.00	9.5%
WKU	13,832,100.00	5.5%
UK	78,677,400.00	4.5%
KCTCS	9,835,419.00	2.3%
EKU	3,750,500.00	1.6%
MuSU	1,516,900.00	1.1%
KSU	503,000.00	1.0%
UofL	-	0.0%