



DPT Program Student Manual 2026

Western Kentucky University is accredited by Southern Association of Colleges & Schools, Commission on College (SACS, COC) to award associate, baccalaureate, master, specialist, and doctoral degrees. For questions regarding accreditation the Commission on Colleges can be contacted at 1866 Southern Lane, Decatur, GA 30033-4097, or phone (404)679-4500.

The Doctor of Physical Therapy Program at Western Kentucky University is accredited by the Commission on Accreditation in Physical Therapy Education (CAPTE), 3030 Potomac Ave, Suite 100, Alexandria, Virginia 22305-3085; telephone: (703)706-3245; email: accreditation@apta.org; website: <http://www.capteonline.org>. To contact the APTA Commission on Accreditation in Physical Therapy Education call (703) 706-3241 (Mary Romanello, Director, Accreditation; maryromanello@apta.org or (703) 706-3247 (Doreen Stejskal, Manager, PT Programs; doreenstiskal@apta.org).

WKU reserves the right to change, without notice, any statement in this publication concerning, but not limited to, rules, policies, tuition, fees, faculty, curricula, and courses. This document is not a contract or an offer of a contract.

WKU DPT Program

The Medical Center – WKU Health Sciences Complex: Bowling Green, KY 42101 (270) 745-3234

Table of Contents

Preface	7
Accreditation	7
Welcome and Introduction to the DPT Program at WKU	8
Description of the Profession of Physical Therapy	9
Western Kentucky University Mission Statements	9
Institution Mission Statement	9
College Mission Statement	9
DPT Program Mission Statement	10
DPT Program Vision Statement	10
Overview of the Doctor of Physical Therapy (DPT) Program	10
Goals of Doctor of Physical Therapy Program	10
Student Outcomes	10
Graduate Outcomes	11
Faculty Outcomes	11
Program Outcomes	11
DPT Program Educational Philosophy	12
DPT Program Curriculum Overview	13
DPT Curriculum: WKU Entry-Level Doctor of Physical Therapy Degree Curriculum – Class of 2029	17
WKU Entry-Level Doctor of Physical Therapy Degree Curriculum – Class of 2028	20
WKU Entry-Level Doctor of Physical Therapy Degree Curriculum – Class of 2027	23
DPT Program Course Descriptions	26
Student Manual and Program Modifications	41
Clinical Education	41
The Role of Clinical Education in the DPT Program	41
Document for Clinical Education	41
Scholarly Inquiry Project	41
Core Performance Standards for DPT Students	42

Technical Standards for Admission, Promotion, and Graduation

Observation Skills.....43

Communication Skills.....43

Motor/Psychomotor Skills.....43

Intellectual – Conceptual Integrative and Quantitative Analysis Abilities.....44

Behavioral/Social Attributes and Professionalism.....44

Professionalism.....45

Student Professionalism Concern Report.....46

Reasonable Accommodations for the Physical Therapy Program.....46

Progression through the DPT Program: Student Policies and Procedures.....47

Policies Relating to Admission to the Program.....47

Recruitment.....47

Transfer of Credits.....48

Policies for Students Admitted to the DPT Program

Advisement of Students.....48

Academic Misconduct.....49

Academic Standing in the DPT Program.....50

Academic Review.....51

Committee of Academic Student Success.....52

Probation.....53

Remediation.....54

Program Dismissal Procedure.....54

Deceleration Policy.....55

Dissemination of Information.....56

Drugs and Alcohol.....56

Health Risks and Injuries.....56

Honor System.....57

Informed Consent/Release of Liability.....57

<u>Retention of Students</u>	58
<u>Student Resume</u>	58
<u>Graduation Requirements</u>	58
<u>National Licensing Examination</u>	58
<u>DPT Comprehensive Examination</u>	59
<u>Policies for DPT Courses and Classes</u>	59
<u>Auditing Classes</u>	59
<u>Class Attendance</u>	59
<u>Religious Holiday Notification</u>	60
<u>Course Policies</u>	61
<u>Grading Policies</u>	62
<u>Clinical Competency Assessments</u>	62
<u>Lab Checkoffs</u>	62
<u>Practical Exams</u>	63
<u>Dress Code</u>	64
<u>Classroom Attire</u>	64
<u>Lab Attire</u>	64
<u>Classroom Breaks</u>	64
<u>Cell Phone and Computer Use</u>	64
<u>Classroom and Laboratory Housekeeping</u>	65
<u>General Clean up</u>	65
<u>Hazardous Materials</u>	65
<u>Equipment Maintenance</u>	65
<u>Student Responsibilities</u>	65
<u>Faculty – Staff Information</u>	65
<u>Faculty</u>	66

<u>Office Hours</u>	66
<u>Support Staff</u>	66
<u>Additional Guidelines for Success in the DPT Program</u>	66
<u>Complying with Academic Rules and Regulations</u>	66
<u>Employment</u>	66
<u>Consensual Relationships</u>	66
<u>Copyright and Fair Use Laws</u>	67
<u>Responsible Use of Social Media</u>	67
<u>Social Media Policy</u>	67
<u>Guidelines for the Responsible Use of Social Media</u>	68
<u>Discipline for Violations</u>	68
<u>Confidentiality</u>	68
<u>Criminal Background Check and Recreational Drug Screen</u>	69
<u>Graduate Assistantships</u>	69
<u>Rights, Privileges, and Safety of Individuals</u>	69
<u>Article I Classroom Freedom</u>	70
<u>Article II Student Records</u> :	70
<u>Safety</u>	70
<u>Volunteer Participants in the Classroom</u>	71
<u>Grievance – Procedural Steps</u>	71
<u>Filing a Complaint about a DPT Program Faculty Member</u>	71
<u>Filing a Complaint about a DPT Program to CAPTE</u>	72
<u>For Complaints that Fall Outside of Normal Mechanisms</u>	72
<u>Equal Opportunity and Non-Discrimination</u>	73
<u>WKU Ancillary Services Available to DPT Students</u>	74
<u>Information Technology Services and Technical Support</u>	74

Student Financial Assistance	74
Health Services	74
Laboratories	74
Libraries	74
Lockers	74
Parking	75
Campus Safety (Security)	75
Student Accessibility Resource Center (SARC)	75
Student Support Services	75
Title IX Misconduct/Assault Statement	75
WKU Writing Center	76
Emergency Procedures	76
Evacuation of Research Subjects or Patients	76
Evacuation Plan for MCHC 3rd Floor	77
MCHC Response Plan	77
FORMS	
DPT Student Responsibility for Manual Information.....	79
DPT Program Academic Dishonest Policy.....	80
Student Professionalism Concern Report Form.....	81
DPT Program Disclosure.....	82
Accreditation and Registration Statements.....	83
DPT Student Assumption of Risk/Release of Liability Form.....	84
Emergency Contact Information.....	85
Student Demonstration Informed Consent.....	86
Videotape/Photograph Consent.....	87
Photo Consent.....	88
DPT Student Appeal Form.....	89

Preface

Students in the Doctor of Physical Therapy (DPT) Program are students at Western Kentucky University (WKU). Therefore, DPT students are expected to comply with the regulations and academic standards specified in the most current edition of the WKU Student Handbook. Additionally, this DPT Program Student Manual provides information regarding policies, procedures, and requirements specific to the WKU DPT Program. Students enrolled in the DPT Program are expected to be familiar with the information in this Manual, the Clinical Education Manual, and acknowledge such by signing the form “**ACKNOWLEDGEMENT OF RECEIPT**” found in the back of the Manual *after* having reviewed it.

WKU reserves the right to change any provision or requirement, including fees, contained in this informational document at any time with or without notice. Please read this DPT Program Student Manual carefully. Questions related to the content of this Manual should be directed to the Program Director.

Program Contact Information:

Audra Coil, Office Coordinator

Phone: 270-745-3234

Email: audra.coil@wku.edu

Program Director Information:

Elizabeth Norris, PhD, PT, OCS

Department Chair, Professor

Phone: 270-745-3188

Email: Elizabeth.norris@wku.edu

June 2024

Accreditation

Graduation from a physical therapy education program accredited by the Commission on Accreditation in Physical Therapy Education (CAPTE) [3030 Potomac Ave, Suite 100, Alexandria, Virginia 22305-3085; accreditation@apta.org] is necessary for eligibility to seat for the licensure examination, which is required in all states. The Doctor of Physical Therapy Program at Western Kentucky University is accredited by the Commission on Accreditation in Physical Therapy Education (CAPTE), 3030 Potomac Ave, Suite 100, Alexandria, Virginia 22305-3085; telephone: 703-706-3245; email: accreditation@apta.org; website: <http://www.capteonline.org>. To contact the APTA Commission on Accreditation in Physical Therapy Education call 703-706-3241 (Mary Romanello, Director, Accreditation; maryromanello@apta.org) or 703-706-3247 (Doreen Stiskal, Manager, PT Programs; doreenstiskal@apta.org).

Welcome and Introduction to the DPT Program at WKU

Welcome to the WKU DPT Program! After an exhaustive review of your past achievements, you have been selected as one of our students. This reflects our confidence in your potential to become a competent and ethical physical therapist general practitioner who will be able to deliver quality patient care in a variety of clinical settings.

During the first year, your education will include a combination of classroom and laboratory activities designed to give you a strong background in basic sciences, such as human anatomy, neuroanatomy, pathophysiology, and general neurologic and orthopaedic principles. You will also learn about the principles of assessment and be introduced to many of the therapeutic techniques commonly used in rehabilitation scenarios.

The second year of student will integrate foundational material from year one as you learn to apply the patient-client management model across major body systems such as musculoskeletal, neurologic, cardiopulmonary, and integumentary, and across the lifespan (pediatrics to geriatrics). You will incorporate principles of evidence-based practice as you learn how to examine a patient case using appropriate instruments and clinical tests, evaluate examination findings to develop a physical therapy diagnosis, prognosis, and plan of care, select and implement specific interventions, and assess the effectiveness of physical therapy interventions using established outcome tools. In addition to developing clinical skills, you will gain knowledge and understanding of professional ethics, legal and regulatory practice standards, effective communication skills, and the management of human and fiscal resources related to physical therapy practice.

Beginning in the fall semester of your second year of study, clinical affiliations of various lengths (6 to 13 weeks) are integrated within the curriculum. These clinical affiliations provide you the opportunity to practice the clinical skills and knowledge acquired through didactic (classroom) components of the curriculum and to work in and experience the varied scope of practice available to physical therapists. In keeping with our University and Program missions, you will also have at least 1 clinical rotation in a rural setting.

Your education is a process that builds on previously learned information. Each segment is critical for guiding you into a profession that is rapidly changing and wide in space. The first step in this process is to become thoroughly familiar with our Program. The purpose of this Manual is to introduce you to our mission and to inform you of what is expected of you as a student. There is also general information that will answer most of your questions. Become familiar with the manual and keep it for your reference.

We are here to help you achieve the goal of becoming an effective, caring practitioner. We hope that you will feel free to come to us at any time with problems or suggestions. **And now, we invite you to accept the challenge.**

Yours in good health,

Elizabeth Norris, PhD, PT, OCS
Department Chair, Professor
Phone: 270-745-3188
Email: Elizabeth.norris@wku.edu

Description of the Profession of Physical Therapy

Physical therapists are health professionals who diagnose and manage movement dysfunction as it relates to the restoration, maintenance, and promotion of optimal physical function and the health and well-being of individuals, families, and communities. Based on a person's diagnosis, prognosis, and goals, physical therapists design and implement a customized and integrated plan of care in collaboration with the individual to achieve the individual's goal-directed outcomes."¹

"Physical therapists assume leadership roles in rehabilitation, in prevention health maintenance, and programs that promote health wellness and fitness, and in professional and community organization.... The practice of physical therapy necessitates that the individual physical therapist engages in specific and complex cognitive, psychomotor, and affective behaviors when providing services to patients/clients, families, or caregivers. Using their body of knowledge, physical therapists integrate five elements of care in a manner designed to maximize the patient's outcome: examination, diagnosis, prognosis, and intervention."² Physical Therapists' practice in a broad range of inpatient, outpatient and community-based settings and treat age groups ranging from newborns to geriatric patients.

1. ATPA Guide to Physical Therapist Practice 4.0. American Physical Therapy Association. Published 2023
2. A Normative model of Physical Therapist Education, version 2004. Alexandria VA; American Physical Therapy Association, 2004

Western Kentucky University Mission Statements

Institution Mission Statement

Western Kentucky University prepares students of all backgrounds to be productive, engaged, and socially responsible citizen-leaders of a global society. The University provides research, service and lifelong learning opportunities for its students, faculty, and other constituents. WKU enriches the quality of life for those within its reach.

College Mission Statement

We prepare health and human service leaders who will work to improve the quality of life in their communities and beyond.

Core Values of the CHHS are:

Diversity, Equity, and Inclusion; Community-engagement; Interdisciplinary/Interprofessional approaches; Ethical practices and integrity; Collaboration; Student-centered; Innovation.

DPT Program Mission Statement

We prepare physical therapists who improve the quality of life of their patients and clients, especially rural and underserved communities.

DPT Program Vision Statement

To service the physical therapy needs of Kentucky, emphasizing rural and underserved areas of the western and south-central regions, by developing competent, socially responsible, empathetic, autonomous, collaborative, and professional physical therapist who will engage in critical thinking, evidence-based research, life-long learning, and community/ professional service.

Overview of the Doctor of Physical Therapy (DPT) Program

Goals of the Doctor of Physical Therapy Program

The goals of the DPT Program are as follows:

1. Prepare physical therapists who demonstrate competence, integrity, professional behaviors, intra- and interprofessional collaboration and empathetic attitudes in their practices.
2. Prepare physical therapists who engage in professional development and self-education for life-long learning.
3. Develop physical therapists who engage in evidence-based practice.
4. Develop physical therapists who demonstrate active engagement in the community and/or profession.
5. Implement curriculum that prepares students for contemporary clinical practice and professional responsibility.
6. Advance the profession and practice physical therapy through scholarly and professional service.
7. Prepare physical therapists who are culturally competent and sensitive of individual differences.

The following outcomes will be used to support the **goals** of the WKU DPT Program:

Student Outcomes:

1. Program students will demonstrate competence in physical therapy knowledge and clinical skills.
2. Program students will demonstrate integrity, professional behaviors, interprofessional collaboration and empathetic attitudes in their practices.
3. Program students will demonstrate professional development in contemporary physical therapy practice.
4. Program students will utilize current evidence to guide clinical decision making.
5. Program students will be engaged in professional and/or community service.

6. Program students will be actively engaged in patient and/or professional advocacy activities.
7. Program students will disseminate scholarly work, including proposals and/or products, in professional, community or publication venues.

Graduate Outcomes:

1. Program graduates will demonstrate competence in physical therapy knowledge and clinical skills.
2. Program graduates will demonstrate integrity, professional behaviors, interprofessional collaboration and empathetic attitudes in their practices.
3. Program graduates will demonstrate professional development in contemporary physical therapy practice.
4. Program graduates will utilize current evidence to guide clinical decision making.
5. Program graduates will be engaged in professional and/or community service.
6. Program graduates will be actively engaged in patient and /or professional advocacy activities.
7. Program graduates will provide physical therapy to rural and underserved areas including western and south-central KY.

Faculty Outcomes:

1. Program faculty will pursue and/or maintain evidence of advance practice expertise through clinical practice, completion of graduate post-professional education and/or degree(s), professional development, advance certifications, or clinical specializations.
2. Program faculty will include student-centered teaching approaches in curricular delivery.
3. Program faculty will participate in community-based service initiatives and/or professional service to the community.
4. Program faculty will be actively engaged in professional organizations and leadership roles.
5. Program faculty will disseminate peer-reviewed scholarly products in professional venues and publications.
6. Program faculty will provide research mentorship to students.

Program Outcomes:

1. Program curriculum incorporates current evidence to guide student and graduate clinical decision making.
2. The program exposes students to opportunities for active professional and/or community engagement.
3. Program curriculum will adequately prepare graduates for all NPTE content and system areas.
4. The program will engage students in interprofessional learning experiences through collaboration with students in health professions programs, internally and externally, during didactic courses and in clinical education experiences.
5. The program provides students with experiential opportunities to foster community

relationships within and outside of the program with groups and individuals of varied backgrounds, beliefs, and health status.

6. Program recruitment practices are designed to enhance the student body to be representative of the program's service area as identified in the DPT Program Vision Statement.

DPT Program Educational Philosophy

The educational philosophy of the WKU DPT Program is founded in the mission, objectives and core values as set forth by the CHHS and is fundamentally related to the broader educational objective of WKU. WKU has the mission of providing learning experiences for living as well as for learning resulting in comprehensive academic programs designed to give students the personalized attention, they need to lead fulfilling lives and have successful careers. The purposes of general education courses in undergraduate curricula are to assist students by providing a breadth of educational experience within baccalaureate degrees. Through the completion of such general education requirements, students are expected to develop, synthesize, and internalize personal values; increase awareness and develop a more global perspective of the human condition and adapt to the total human environment; strengthen basic skills in communication and computation; and integrate general and career specific learning. These attributes are hallmarks of a university education and widely accepted as educational experiences which often prompt lifelong learning.

The faculty of the WKU DPT Program believes learning is a lifelong process that requires active participation of both the teacher and the student within an open and supportive learning environment. A wide range of teaching methodologies is utilized with the DPT curriculum, meeting the needs and objectives of this educational program, and building upon the baccalaureate learning experiences noted above. The general education courses selected as prerequisites of this Program provide DPT students with a foundational knowledge base in the areas of communication, behavioral sciences, human biology, statistics, and physical sciences. It is essential physical therapists be open-minded, reflective individuals who possess broad interests, understand human nature, and have the capacity to critically analyze ideas. Physical therapy is a licensed profession dedicated to the promotion of wellness, optimal human health and function, and prevention of disability for any individual in any setting. The faculty of the DPT Program believes that individuals are entitled to high quality health care and that consumers should have a decision-making role in the utilization of health care services. Due to constantly changing environments within the health care system, the physical therapist must be flexible and holistic in the approach to the delivery of health care. As a result, the faculty of the DPT Program believe that the curriculum should be designed to provide the student with opportunities to develop problem-solving skills, clinical and research competence, professional values and behaviors, managerial skills, and effective communication skills in an effort to understand and function within dynamic health care environments and to develop strategies used to be able to seek new interventions. In addition, we believe its necessary to promote and understanding and acceptance of the diversity of individuals of various cultures, races, and religions encountered in health care environments and society at large.

The two major components of the professional education curriculum are academic and clinical experiences. The faculty of the DPT Program believe the two components should be planned and implemented to be interdependent and to reinforce one another. The academic setting is designed to provide the information and theoretical basis that is then integrated and expanded in the clinical setting. However, clinical competence will be verified in the classroom as well as in the clinical setting, as clinical components are integrated into the curriculum to allow students to utilize their knowledge and develop skills in anticipation of rotation experiences completed within a supervised clinical education setting.

The faculty of the DPT Program believes that a competency-based curriculum is the most effective for assessing both a student's performance level and his or her readiness to work as a physical therapist in clinical environments. To verify clinical competency, students will be required to successfully complete-in addition to traditional written examinations-a series of "checkoffs" and "practical examinations" throughout the curriculum. Competency-based performance evaluation ensures that 1) learning experiences and assessments are organized around the major clinical behaviors that must be exhibited by the students at entry into the profession; and 2) spiraling learning experiences throughout the curriculum enhance the acquisition, utilization, and retention of concepts and skills necessary for competent entry-level practice. The initial focus of the physical therapy curriculum is on normal human function in conjunction with theory-based information and the introduction of program-solving skills and critical thinking necessary for competent practice as licensed physical therapist. As the curriculum advances, case studies are introduced and expanded; this encourages students to problem-solve and analyze patient cases that are increasingly more complex in term of pathology and psychosocial issues, as is commonly the case in contemporary healthcare scenarios. Repetition of key information, reinforcement of theory and hands-on practice, and the incorporation of a variety of teaching styles and methods of learning as a way of developing critical thinking and inquiry, are areas emphasized to promote full retention of material and attain proficiency in entry-level competencies. The development of coping strategies, appropriate oral and written communication skills, and understanding the roles of members of the health care team are also areas integrated and regularly reinforced throughout the educational experiences.

The faculty of the DPT Program believe it is our responsibility to 1) establish assessment tools relevant to didactic and clinical education performance within the scope of practice for a physical therapist, 2) evaluate student performance consistently and fairly, and 3) provide feedback and guidance to the students regarding their performance. In turn, an equal or greater responsibility is placed on the students for their own learning through self-study, reflection, research, and presentation. The students are also responsible for making choices and accepting the consequences of those choices.

DPT Program Curriculum Overview

The organization of the curricular content has been designed around several clearly identified horizontal themes that are expressed throughout the curriculum, resulting in a solid integration of courses. Particular attention has been given to the **vertical integration** of the curriculum as well, enhancing the student's assimilation of learning. **Horizontal integration** refers to the increasing complexity of subject matter throughout the DPT Program, whereas **vertical integration** is defined as a thematic curricular organization within a given semester.

The commitment of this Program is to provide students with an intellectual environment enabling them to develop the skills necessary to become competent, autonomous practitioners. Integral to this environment are fundamental objectives that form the basis of the curriculum. These fundamental objectives are influenced by manuscripts such as the *Guide to Physical Therapy Practice* and the *Normative Model of Physical Therapy Education*, which provide all physical therapy educators with something of a conceptual blueprint for professional education in physical therapy.

First, professional education in physical therapy should include a strong emphasis on the foundational (i.e., anatomy, physiology, kinesiology, biomechanics, exercise physiology, exercise, neurosciences, pharmacology, and pathology), behavioral (i.e., communication, ethics, management and finance, teaching and learning, and evidence-based practice), and clinical sciences (i.e., orthopaedic, neuromuscular, cardiopulmonary, etc.). This content is taught by the faculty of the DPT Program.

Second, physical therapy is a clinical science. Thus, students must learn a systematic approach to physical therapy examination, evaluation, diagnosis, prognosis, establishing goals, developing interventions, assessing outcomes, and modifying treatments for patient progression. Since it cannot be assumed that these skills will be learned simply through immersion in clinical affiliations, they need to be developed prior to exposure to the clinical environment and thus are explicitly integrated into the academic curriculum. Moreover, to obtain clinical efficacy, students must be skilled in clinical reasoning based on critical analysis of the literature to guide them in their treatment approaches. The specific objectives and desired outcomes of the educational process are assessed throughout the curriculum via assessment of student clinical competencies, evaluated through methods such as written tests, practical examinations, and checkoffs, all of which are integral to the learning experience. Expected levels of competency are defined by the faculty, assessed by the faculty, and self-assessed by the students at each stage of the curriculum. Curricular objectives are classified for purposes of testing as relating to (1) knowledge base (written exams), (2) clinical skills (practical exams, check offs), (3) clinical reasoning and analysis (written exams, practical exams, check offs, and assignments), and (4) professional behavior (group interaction, written and oral communications, participation in class activities, and patient handling skills). At the end of the program, a Graduate Exit Survey is used to identify the effectiveness of the learning experience and serves as feedback to address any deficiencies inherent to the DPT Program.

Third, the teaching of the science of physical therapy is organized around the “common language” set forth in the International Classification of Functioning, Disability, and Health. Also commonly known as the ICF Model – approved and advocated by the World Health Organization (WHO) – it is a widely used classification system for the health components which impact function and disability and is structured on the following broad components: body functions and structures, activities and participation, and personal and environmental factors. A major advantage of the ICF Model for both clients and health professionals is the integration of the medical and social aspects of the health conditions, rather than focusing on diagnosis as diagnosis reveals little about one’s functional abilities.

Fourth, integrating clinical scenarios into didactic instruction is a fundamental cornerstone of the DPT curriculum and includes learning experiences throughout the curriculum to enhance acquisition, utilization, and retention of concepts and skills necessary for entry-level practice. This is achieved, in part, via the use of case studies to enhance the learning of foundational and clinical sciences. Implemented more so in the second year, students will work either independently or in small groups, whereby they are given clinical problems carefully designed to assist them in meeting unit objectives. Clinical reasoning and critical analysis in physical therapy are high-level cognitive skills that are best learned within a self-directed, learner-centered framework. The use of case-studies provides this framework by enabling students to integrate basic and clinical science, clinical reasoning, and critical analysis for a particular clinical problem. As the curriculum progresses, DPT students incrementally are provided more clinically challenging cases culminating within the clinical education rotations that are integrated throughout the academic curriculum.

Fifth, as part of our mission, the unique needs of underserved and rural populations are addressed. Emphasis in this curriculum is placed on serving the rural and underserved areas of the Commonwealth of Kentucky. Students learn the eclectic nature of rural physical therapy via placement in at least one rural health clinical affiliation. The importance of networking with other disciplines, functional rehabilitation, time management, travel considerations, dealing with life threatening emergencies and involvement of family members in intervention are all goals identified in this experience.

Sixth, it is important to realize the necessity of research to validate practices with the profession of physical therapy. Research concepts need to be integrated in order for students to develop critical thinking skills, thus providing them with the ability to research and organize information relevant to the practice of physical therapy. Students are taught to critically evaluate published research at a number of points within the curriculum. For example, students are introduced to such processes with the research course sequence, and these professional skills are reinforced through the curriculum via the integration of relevant research findings into the courses which address the clinical practice patterns identified within the practice of physical therapy. Students are then given the opportunity to complete a research project by developing a research question with a faculty

member, performing a literature review, and conducting the research study. Another option would be to aid a faculty member through participation in new or on-going projects. Furthermore, as a final culminating experience, the students must prepare and orally defend their research project. The primary aim of this emphasis is to provide students with the critical thinking skills necessary to integrate research findings on an ongoing basis into contemporary physical therapy practice.

Seventh, professional behavior is expected from all students. Specific behaviors have been delineated and are emphasized during interaction with other students, faculty, clinicians, and patients. Inconsistencies in students' behaviors with respect to the professional behaviors as outlined will be brought to the students' attention in an effort to make them cognizant of potential problems that may be encountered in a professional environment.

Eighth, the clinical practice of physical therapy should reflect the art as well as the science of our profession. This includes respect for differences related to age, gender, culture, ethnicity, race, and religion. This is achieved in part by tailoring our communication and treatment design for each patient and his/her family.

As a whole, these learning experiences serve as the cornerstone that produces competent, autonomous practitioners. Students enter this curriculum with a strong foundational background in basic sciences and humanities that are the hallmarks of a baccalaureate degree earned in a university environment. They are then challenged in intentional and iterative ways over a three-year period to manage increasingly more complex clinical scenarios. These educational experiences provide graduates of the DPT Program with the life-long learning skills necessary to function as autonomous physical therapy practitioners within healthcare environments of the 21st century.

DPT Curriculum: Plan of Study Class of 2029

WKU Entry-Level Doctor of Physical Therapy Degree Curriculum

YEAR 1

- SUMMER SEMESTER I 1ST YEAR
 - DPT 700 Orientation to Physical Therapy – 1 credit
 - DPT 720 Gross Human Anatomy I – 2 credits
 - DPT 721 Gross Human Anatomy II Lab – 1 credit
 - *DPT 711 Principles of Physical Assessment I – 1 credit*
- SUMMER SEMESTER II 2nd YEAR
 - *DPT 711 Principles of Physical Assessment I – 1 credit*
 - DPT 722 Gross Human Anatomy II – 2 credits
 - DPT 723 Gross Human Anatomy II Lab – 1 credit
 - Total Summer Semester Credit Hours: 8
- FALL SEMESTER 1ST YEAR
 - DPT 712 Principles of Physical Assessment II – 2 credits
 - DPT 713 Principles of Physical Assessment III – 2 credits
 - DPT 724 Pathophysiology – 4 credits
 - DPT 726 Orthopaedic Foundations – 3 credits
 - DPT 728 Clinical Exercise Physiology – 3 credits
 - DPT 736 Neuroanatomy – 3 credits
 - DPT 781 Research in Physical Therapy I – 3 credits
 - Total Semester Credit Hours: 20
- SPRING SEMESTER 1ST YEAR
 - DPT 715 Patient Care Techniques – 3 credits
 - DPT 716 Principles of Therapeutic Exercise – 3 credits
 - DPT 735 Pain Neuroscience for Physical Therapy – 1 credit
 - DPT 746 Management of Upper Extremity Musculoskeletal Disorders – 4 credits
 - DPT 749 Neurological Assessment – 1 credit
 - DPT 760 Professional Issues – 2 credits
 - DPT 782 Research in Physical Therapy II – 2 credits
 - Total Semester Credit Hours: 16

YEAR 2

- SUMMER SEMESTER I 2nd YEAR
 - *DPT 772 Cardiopulmonary Rehabilitation – 3 credits*
 - *DPT 740 Biophysical Agents – 3 credits*
 - DPT 783 Research in Physical Therapy III – 3 credits
- SUMMER SEMESTER II 2nd YEAR
 - *DPT 772 Cardiopulmonary Rehabilitation – 3 credits*
 - *DPT 740 Biophysical Agents – 3 credits*
 - DPT 738 Motor Control – 2 credits
 - DPT 761 Physical Therapy Management and Administration I – 1 credit
 - Total Summer Semester Credit Hours: 12
- FALL SEMESTER 2nd YEAR
 - DPT 705 Topics in Physical Therapy – 1 credit
 - DPT 729 Pharmacology in Physical Therapy – 2 credits
 - DPT 751 Supervised Clinical Education I – 4 credits (last 6 weeks)
 - DPT 770 Management of Lower Extremity Musculoskeletal Disorders – 4 credits
 - DPT 771 Neurological Rehabilitation – 4 credits
 - DPT 778 Geriatric Physical Therapy – 1 credit
 - *DPT 784 Research in Physical Therapy IV – 1 credit*
 - Total Semester Credit Hours: 16-17 (depending on DPT 784)
- SPRING SEMESTER 2nd YEAR
 - DPT 742 Diagnostic Testing and Imaging – 2 credits
 - DPT 745 Integumentary System – 2 credits
 - DPT 748 Prosthetics and Orthotics – 2 credits
 - DPT 762 Physical Therapy Management and Administration II – 3 credits
 - DPT 774 Spine Assessment and Intervention – 4 credits
 - DPT 779 Pediatric Physical Therapy – 3 credits
 - *DPT 784 Research in Physical Therapy IV – 1 credit*
 - Total Semester Credit Hours: 16-17 (depending on DPT 784)

YEAR 3

- SUMMER SEMESTER I 3rd YEAR
 - DPT 752 Supervised Clinical Education II – 5 credits (7 weeks)
 - Total Semester Credits Hours: 5
- FALL SEMESTER 3rd YEAR
 - DPT 727 Health Promotion and Wellness – 2 credits
 - DPT 747 Physical Therapy Management for Select Populations – 2 credits
 - DPT 753 Supervised Clinical Education III – 7 credits (10 weeks)
 - DPT 775 Screening for Referral – 3 credits
 - *DPT 785 Research Synthesis and Professional Competency Seminar – 1 credit*
 - Total Semester Credit Hours: 14-15 (depending on DPT 785)
- SPRING SEMESTER 3rd YEAR
 - DPT 754 Supervised Clinical Education IV – 9 credits (13 weeks)
 - *DPT 785 Research Synthesis and Professional Competency Seminar – 1 credit*
 - Total Semester Credit Hours: 9-10 (depending on DPT 785)

Total Curriculum Credit Hours: 118

DPT Curriculum: Plan of Study Class of 2028
WKU Entry-Level Doctor of Physical Therapy Degree Curriculum

YEAR 1

- SUMMER SEMESTER I 1ST YEAR
 - DPT 700 Orientation to Physical Therapy – 1 credit
 - DPT 720 Gross Human Anatomy I – 2 credits
 - DPT 721 Gross Human Anatomy II Lab – 1 credit
- SUMMER SEMESTER II 2nd YEAR
 - DPT 711 Principles of Physical Assessment I – 1 credit
 - DPT 722 Gross Human Anatomy II – 2 credits
 - DPT 723 Gross Human Anatomy II Lab – 1 credit
 - Total Summer Semester Credit Hours: 8
- FALL SEMESTER 1ST YEAR
 - DPT 712 Principles of Physical Assessment II – 2 credits
 - DPT 713 Principles of Physical Assessment III – 2 credits
 - DPT 724 Pathophysiology – 4 credits
 - DPT 726 Orthopaedic Foundations – 3 credits
 - DPT 728 Clinical Exercise Physiology – 3 credits
 - DPT 736 Neuroanatomy – 3 credits
 - DPT 781 Research in Physical Therapy I – 3 credits
 - Total Semester Credit Hours: 20
- SPRING SEMESTER 1ST YEAR
 - DPT 715 Patient Care Techniques – 3 credits
 - DPT 716 Principles of Therapeutic Exercise – 3 credits
 - DPT 735 Pain Neuroscience for Physical Therapy – 1 credit
 - DPT 746 Management of Upper Extremity Musculoskeletal Disorders – 4 credits
 - DPT 749 Neurological Assessment – 1 credit
 - DPT 760 Professional Issues – 2 credits
 - DPT 782 Research in Physical Therapy II – 2 credits
 - Total Semester Credit Hours: 16

YEAR 2

- SUMMER SEMESTER I 2nd YEAR
 - *DPT 772 Cardiopulmonary Rehabilitation – 3 credits*
 - *DPT 740 Biophysical Agents – 3 credits*
 - DPT 783 Research in Physical Therapy III – 3 credits
- SUMMER SEMESTER II 2nd YEAR
 - *DPT 772 Cardiopulmonary Rehabilitation – 3 credits*
 - *DPT 740 Biophysical Agents – 3 credits*
 - DPT 738 Motor Control – 2 credits
 - DPT 761 Physical Therapy Management and Administration I – 1 credit
 - Total Summer Semester Credit Hours: 12
- FALL SEMESTER 2nd YEAR
 - DPT 705 Topics in Physical Therapy – 1 credit
 - DPT 729 Pharmacology in Physical Therapy – 2 credits
 - DPT 751 Supervised Clinical Education I – 4 credits (last 6 weeks)
 - DPT 770 Management of Lower Extremity Musculoskeletal Disorders – 4 credits
 - DPT 771 Neurological Rehabilitation – 4 credits
 - DPT 778 Geriatric Physical Therapy – 1 credit
 - *DPT 784 Research in Physical Therapy IV – 1 credit*
 - Total Semester Credit Hours: 16-17 (depending on DPT 784)
- SPRING SEMESTER 2nd YEAR
 - DPT 742 Diagnostic Testing and Imaging – 2 credits
 - DPT 745 Integumentary System – 2 credits
 - DPT 748 Prosthetics and Orthotics – 2 credits
 - DPT 762 Physical Therapy Management and Administration II – 3 credits
 - DPT 774 Spine Assessment and Intervention – 4 credits
 - DPT 779 Pediatric Physical Therapy – 3 credits
 - *DPT 784 Research in Physical Therapy IV – 1 credit*
 - Total Semester Credit Hours: 16-17 (depending on DPT 784)

YEAR 3

- SUMMER SEMESTER I 3rd YEAR
 - DPT 752 Supervised Clinical Education II – 5 credits (7 weeks)
 - Total Semester Credits Hours: 5
- FALL SEMESTER 3rd YEAR
 - DPT 727 Health Promotion and Wellness – 2 credits
 - DPT 747 Physical Therapy Management for Select Populations – 2 credits
 - DPT 753 Supervised Clinical Education III – 7 credits (10 weeks)
 - DPT 775 Screening for Referral – 3 credits
 - *DPT 785 Research Synthesis and Professional Competency Seminar – 1 credit*
 - Total Semester Credit Hours: 14-15 (depending on DPT 785)
- SPRING SEMESTER 3rd YEAR
 - DPT 754 Supervised Clinical Education IV – 9 credits (13 weeks)
 - *DPT 785 Research Synthesis and Professional Competency Seminar – 1 credit*
 - Total Semester Credit Hours: 9-10 (depending on DPT 785)

Total Curriculum Credit Hours: 118

DPT Curriculum: Plan of Study Class of 2027

WKU Entry-Level Doctor of Physical Therapy Degree Curriculum

YEAR 1

- SUMMER SEMESTER I 1ST YEAR
 - DPT 700 Orientation to Physical Therapy – 1 credit
 - DPT 720 Gross Human Anatomy I – 2 credits
 - DPT 721 Gross Human Anatomy II Lab – 1 credit
- SUMMER SEMESTER II 2nd YEAR
 - DPT 711 Principles of Physical Assessment I – 1 credit
 - DPT 722 Gross Human Anatomy II – 2 credits
 - DPT 723 Gross Human Anatomy II Lab – 1 credit
 - Total Summer Semester Credit Hours: 8
- FALL SEMESTER 1ST YEAR
 - DPT 712 Principles of Physical Assessment II – 2 credits
 - DPT 713 Principles of Physical Assessment III – 2 credits
 - DPT 724 Pathophysiology – 4 credits
 - DPT 726 Orthopaedic Foundations – 3 credits
 - DPT 728 Clinical Exercise Physiology – 3 credits
 - DPT 736 Neuroanatomy – 3 credits
 - DPT 781 Research in Physical Therapy I – 3 credits
 - Total Semester Credit Hours: 20
- SPRING SEMESTER 1ST YEAR
 - DPT 715 Patient Care Techniques – 3 credits
 - DPT 716 Principles of Therapeutic Exercise – 2 credits
 - DPT 735 Pain Neuroscience for Physical Therapy – 1 credit
 - DPT 746 Management of Upper Extremity Musculoskeletal Disorders – 4 credits
 - DPT 749 Neurological Assessment – 1 credit
 - DPT 760 Professional Issues – 2 credits
 - DPT 782 Research in Physical Therapy II – 2 credits
 - Total Semester Credit Hours: 15

YEAR 2

- SUMMER SEMESTER I 2nd YEAR
 - DPT 772 Cardiopulmonary Rehabilitation – 3 credits
 - DPT 783 Research in Physical Therapy III – 3 credits
- SUMMER SEMESTER II 2nd YEAR
 - DPT 738 Motor Control – 2 credits
 - DPT 740 Physical Modalities – 3 credits
 - DPT 761 Physical Therapy Management and Administration I – 1 credit
 - Total Summer Semester Credit Hours: 12
- FALL SEMESTER 2nd YEAR
 - DPT 705 Topics in Physical Therapy – 1 credit
 - DPT 729 Pharmacology in Physical Therapy – 2 credits
 - DPT 751 Supervised Clinical Education I – 4 credits (last 6 weeks)
 - DPT 770 Management of Lower Extremity Musculoskeletal Disorders – 4 credits
 - DPT 771 Neurological Rehabilitation – 4 credits
 - DPT 778 Geriatric Physical Therapy – 1 credit
 - *DPT 784 Research in Physical Therapy IV – 1 credit*
 - Total Semester Credit Hours: 16-17 (depending on DPT 784)
- SPRING SEMESTER 2nd YEAR
 - DPT 742 Diagnostic Testing and Imaging – 2 credits
 - DPT 745 Integumentary System – 2 credits
 - DPT 748 Prosthetics and Orthotics – 2 credits
 - DPT 762 Physical Therapy Management and Administration II – 3 credits
 - DPT 774 Spine Assessment and Intervention – 4 credits
 - DPT 779 Pediatric Physical Therapy – 3 credits
 - *DPT 784 Research in Physical Therapy IV – 1 credit*
 - Total Semester Credit Hours: 16-17 (depending on DPT 784)

YEAR 3

- SUMMER SEMESTER I 3rd YEAR
 - DPT 752 Supervised Clinical Education II – 5 credits (7 weeks)
 - Total Semester Credits Hours: 5
- FALL SEMESTER 3rd YEAR
 - DPT 727 Health Promotion and Wellness – 2 credits
 - DPT 747 Physical Therapy Management for Select Populations – 2 credits
 - DPT 753 Supervised Clinical Education III – 7 credits (10 weeks)
 - DPT 775 Screening for Referral – 3 credits
 - DPT 785 Research for Physical Therapy V – 1 credit
 - *DPT 790 PT Seminar – 1 credit*
 - Total Semester Credit Hours: 15-16 (depending on DPT 790)
- SPRING SEMESTER 3rd YEAR
 - DPT 754 Supervised Clinical Education IV – 9 credits (13 weeks)
 - *DPT 790 PT Seminar – 1 credit*
 - Total Semester Credit Hours: 9-10 (depending on DPT 790)

Total Curriculum Credit Hours: 118

DPT Program Course Descriptions – Class of 2029

(Prerequisites: All courses open only to DPT students in good standing)

DPT 700 Orientation to Physical Therapy (1 Credit)

Provide the student with an orientation to the physical therapy profession including specific clinical education policies, procedures, and clinical placement.

DPT 705 Orientation to Clinical Education in Physical Therapy (1 Credit)

Disseminates information to students on contemporary professional issues in physical therapy as it pertains to clinical education.

DPT 711 Principles of Physical Assessment I (1 Credit)

Introduction to basic patient assessment skills, including surface palpation and vital signs.

DPT 712 Principles of Physical Assessment II (2 Credits)

Additional patient assessment skills, including manual muscle testing, reflex testing, sensory testing, and abdominal quadrant screening.

DPT 713 Principles of Physical Assessment III (2 Credits)

Additional Patient assessment skills, including goniometry, posture, anthropometric measures, with an introduction to patient history and documentation in SOAP note format.

DPT 715 Patient Care Techniques (3 Credits)

Performance and application of positioning skills, bed mobility, transfers, and gait training techniques (including assistive devices) across the continuum of care. Clinical reasoning skills in assessment, treatment design and intervention, goal development, and discharge planning for patients in the acute hospital environment.

DPT 716 Principles of Therapeutic Exercise in Physical Therapy (3 Credits)

A theoretical and practical approach to therapeutic exercise and functional training as it applies to all populations.

DPT 720 Gross Human Anatomy I (2 Credits)

The study of gross human anatomy, including muscle, tendon, ligament, and vascular supply of the upper and lower extremities. Co-requisite: DPT 721

DPT 721 Gross Human Anatomy I Lab (1 Credit)

Gross human anatomy lab with supervised exploration of muscle, tendon, ligament, and nerve innervation of the upper and lower extremities using a variety of resources. CO-requisite: DPT 720

DPT 722 Gross Human Anatomy II (2 Credits)

The study of gross human anatomy, including muscle, tendon, ligament, innervation and vascular supply of the head, neck, trunk, pelvic, thoracic, and abdominal regions. Co-requisite: DPT 723

DPT 723 Gross Human Anatomy II Lab (1 Credit)

Gross human anatomy lab with supervised exploration of muscle, tendon, ligament, innervation and vascular supply of head, neck, trunk, pelvic, thoracic, and abdominal regions using a variety of resources. CO-requisite: DPT 722

DPT 724 Pathophysiology (4 Credits)

Fundamentals of physiology and pathology related to diseases causing abnormal movement patterns or capabilities. Processes and diseases most frequently encountered in physical therapy practice emphasized.

DPT 726 Orthopaedic Foundations (3 Credits)

Principles of orthopaedic physical therapy including biomechanics, applied anatomy, and osteokinematic and arthrokinematics concepts. Musculoskeletal system investigation from histological, structural, and functional perspectives.

DPT 727 Health Promotion and Wellness (2 Credits)

This course will create a forum to prepare students for clinical competencies regarding health promotion/wellness as it relates to physical therapy.

DPT 728 Clinical Exercise Physiology (3 Credits)

Overview of the physiologic responses of the human body to exercise and training in normal and patient populations.

DPT 729 Pharmacology in Physical Therapy (2 Credits)

Actions and effects of pharmaceutical agents commonly encountered in physical therapy clinical practice.

DPT 735 Pain Neuroscience for Physical Therapy (1 Credit)

The neuroscience of pain and its application in physical therapy practice.

DPT 736 Neuroanatomy (3 Credits)

Anatomy of the central and peripheral nervous systems, emphasizing structure and functional relationships in normal and pathological states.

DPT 738 Motor Control (2 Credits)

This course will prepare students to understand and apply motor control principles as it relates to physical therapy.

DPT 740 Biophysical Agents (3 Credits)

The clinical application of soft tissue techniques, thermal agents, intermittent compression, continuous motion, electrical stimulation, and mechanical traction.

DPT 742 Diagnostic Testing and Imaging (2 Credits)

Presentation of diagnostic tests and interpretation of results as it applies to physical therapy evaluation, intervention, planning, and treatment.

DPT 745 Integumentary System (2 Credits)

Clinical practice of wound care including assessment tools, dressings, and treatment approaches.

DPT 746 Management of Upper Extremity Musculoskeletal Disorders (4 Credits)

Physical therapy examination, evaluation, and intervention for upper extremity musculoskeletal dysfunction. Emphasis placed on the process of clinical decision making to develop the student's ability to utilize examination findings to establish a differential diagnosis that informs intervention. Lab activities promote development of psychomotor skills in the application of examination and intervention techniques, including special tests, manual therapy, and therapeutic exercise.

DPT 747 Physical Therapy Management of Select Populations (2 Credits)

Exploration of clinical practice related to specialty areas of physical therapy including pelvic health and other conditions related to gender-specific pathologies.

DPT 748 Prosthetics and Orthotics (2 Credits)

Design, fabrication, fitting and management of individuals requiring prosthetic and orthotic devices.

DPT 749 Neurological Assessment (1 Credit)

Physical therapy examination, evaluation, and assessment of individuals with neurologically based movement disorders.

DPT 751 Supervised Clinical Education (6 weeks – 4 Credits)

This full-time first clinical education experience provides students the opportunity to actively engage in experiential learning and develop introductory clinical competence. Students are responsible for transportation to and from off-campus experiences.

DPT 752 Supervised Clinical Education (7 weeks – 5 Credits)

This full-time second clinical education experience provides students additional opportunities for experiential learning and further development of clinical competence. Students are responsible for transportation to and from off-campus experiences.

DPT 753 Supervised Clinical Education (10 weeks – 7 Credits)

This third full-time clinical education experience provides students opportunities for refinement of their professional behaviors and examination skills, and development of intervention techniques. Students are responsible for transportation to and from off-campus experiences.

DPT 754 Supervised Clinical Education (13 weeks – 9 Credits)

The fourth full-time clinical education experience provides students the opportunity to further develop skills and display clinical competence as an autonomous physical therapist. Students are responsible for transportation to and from off-campus experiences.

DPT 760 Professional Issues (2 Credits)

Professional Issues pertinent to physical therapy including state and national associations, state and federal laws, standards of practice and code of ethics.

DPT 761 Physical Therapy Management and Administration I (1 Credit)

Foundational concepts of business principles for DPT students with an emphasis on leadership, administration, management, and professionalism.

DPT 762 Physical Therapy Management and Administration II (3 Credits)

General principles of organization and administration that impact the ethical and legal aspects of physical therapy practice.

DPT 770 Management of Lower Extremity Musculoskeletal Disorders (4 Credits)

Physical therapy examination, evaluation, and intervention for lower extremity musculoskeletal dysfunction. Emphasis placed on the process of clinical decision making to develop the student's ability to utilize examination findings to establish a differential diagnosis that informs intervention. Lab activities promote development of psychomotor skills in the application of examination and intervention techniques, including special tests, manual therapy, and therapeutic exercise.

DPT 771 Neurological Rehabilitation (4 Credits)

Emphasis on hands-on skill development, clinical reasoning, and critical analysis for treating individuals with neurologically based movement disorders.

DPT 772 Cardiopulmonary Rehabilitation (3 Credits)

Evaluation and treatment of patients with cardiopulmonary disease and dysfunction, emphasizing the response of cardiac, circulatory, and pulmonary systems to exercise.

DPT 774 Spine Assessment and Intervention (4 Credits)

Spine assessment and treatment, including mobilizations, special tests, and exercise progressions, in patients with spine dysfunction.

DPT 775 Screening for Referral (3 Credits)

A system-based approach to differential screening and diagnosis to determine if further medical referral is necessary.

DPT 778 Geriatric Physical Therapy (1 Credit)

This course will explore the physical and psycho-behavioral aspects of aging. Students will review typical physiologic response to aging and the effects of these changes on the function of older clients being treated in various physical therapy settings. A problem-solving approach to management of elder patients with varied degrees of medical complexity in multiple settings will be emphasized.

DPT 779 Pediatric Physical Therapy (3 Credits)

Examination of the factors affecting normal and pathologic development in infants and children to age 21 year. Additionally, treatment techniques appropriate to these populations will be covered.

DPT 781 Research in Physical Therapy I (3 Credits)

An introduction to clinical research in physical therapy, dealing with research design and methodology, as well as the development of a research project topic.

DPT 782 Research in Physical Therapy II (2 Credits)

Further development of the research topic, critical review of clinically relevant research literature, development of IRB application, and establishing the project timeline.

DPT 783 Research in Physical Therapy III (3 Credits)

Use of SPSS for physical Therapy related data analysis, including descriptive statistics, statistical inference, analysis of differences, and analysis of relationships.

DPT 784 Research in Physical Therapy IV (1 Credit)

Continuation of the Research track in Physical Therapy. Emphasis placed on data collection and application of applied research statistics.

DPT 785 Research Synthesis and Professional Competency Seminar (1 Credit)

Continuation of the Research track in Physical Therapy, with emphasis on research project completion and preliminary presentation to research advisors.

DPT Program Course Descriptions – Class of 2028

(Prerequisites: All courses open only to DPT students in good standing)

DPT 700 Orientation to Physical Therapy (1 Credit)

Provide the student with an orientation to the physical therapy profession including specific clinical education policies, procedures, and clinical placement.

DPT 705 Orientation to Clinical Education in Physical Therapy (1 Credit)

Disseminates information to students on contemporary professional issues in physical therapy as it pertains to clinical education.

DPT 711 Principles of Physical Assessment I (1 Credit)

Introduction to basic patient assessment skills, including surface palpation and vital signs.

DPT 712 Principles of Physical Assessment II (2 Credits)

Additional patient assessment skills, including manual muscle testing, reflex testing, sensory testing, and abdominal quadrant screening.

DPT 713 Principles of Physical Assessment III (2 Credits)

Additional Patient assessment skills, including goniometry, posture, anthropometric measures, with an introduction to patient history and documentation in SOAP note format.

DPT 715 Patient Care Techniques (3 Credits)

Performance and application of positioning skills, bed mobility, transfers, and gait training techniques (including assistive devices) across the continuum of care. Clinical reasoning skills in assessment, treatment design and intervention, goal development, and discharge planning for patients in the acute hospital environment.

DPT 716 Principles of Therapeutic Exercise in Physical Therapy (3 Credits)

A theoretical and practical approach to therapeutic exercise and functional training as it applies to all populations.

DPT 720 Gross Human Anatomy I (2 Credits)

The study of gross human anatomy, including muscle, tendon, ligament, and vascular supply of the upper and lower extremities. Co-requisite: DPT 721

DPT 721 Gross Human Anatomy I Lab (1 Credit)

Gross human anatomy lab with supervised exploration of muscle, tendon, ligament, and nerve innervation of the upper and lower extremities using a variety of resources. CO-requisite: DPT 720

DPT 722 Gross Human Anatomy II (2 Credits)

The study of gross human anatomy, including muscle, tendon, ligament, innervation and vascular supply of the head, neck, trunk, pelvic, thoracic, and abdominal regions. Co-requisite: DPT 723

DPT 723 Gross Human Anatomy II Lab (1 Credit)

Gross human anatomy lab with supervised exploration of muscle, tendon, ligament, innervation and vascular supply of head, neck, trunk, pelvic, thoracic, and abdominal regions using a variety of resources. CO-requisite: DPT 722

DPT 724 Pathophysiology (4 Credits)

Fundamentals of physiology and pathology related to diseases causing abnormal movement patterns or capabilities. Processes and diseases most frequently encountered in physical therapy practice emphasized.

DPT 726 Orthopaedic Foundations (3 Credits)

Principles of orthopaedic physical therapy including biomechanics, applied anatomy, and osteokinematic and arthrokinematics concepts. Musculoskeletal system investigation from histological, structural, and functional perspectives.

DPT 727 Health Promotion and Wellness (2 Credits)

This course will create a forum to prepare students for clinical competencies regarding health promotion/wellness as it relates to physical therapy.

DPT 728 Clinical Exercise Physiology (3 Credits)

Overview of the physiologic responses of the human body to exercise and training in normal and patient populations.

DPT 729 Pharmacology in Physical Therapy (2 Credits)

Actions and effects of pharmaceutical agents commonly encountered in physical therapy clinical practice.

DPT 735 Pain Neuroscience for Physical Therapy (1 Credit)

The neuroscience of pain and its application in physical therapy practice.

DPT 736 Neuroanatomy (3 Credits)

Anatomy of the central and peripheral nervous systems, emphasizing structure and functional relationships in normal and pathological states.

DPT 738 Motor Control (2 Credits)

This course will prepare students to understand and apply motor control principles as it relates to physical therapy.

DPT 740 Biophysical Agents (3 Credits)

The clinical application of soft tissue techniques, thermal agents, intermittent compression, continuous motion, electrical stimulation, and mechanical traction.

DPT 742 Diagnostic Testing and Imaging (2 Credits)

Presentation of diagnostic tests and interpretation of results as it applies to physical therapy evaluation, intervention, planning, and treatment.

DPT 745 Integumentary System (2 Credits)

Clinical practice of wound care including assessment tools, dressings, and treatment approaches.

DPT 746 Management of Upper Extremity Musculoskeletal Disorders (4 Credits)

Physical therapy examination, evaluation, and intervention for upper extremity musculoskeletal dysfunction. Emphasis placed on the process of clinical decision making to develop the student's ability to utilize examination findings to establish a differential diagnosis that informs intervention. Lab activities promote development of psychomotor skills in the application of examination and intervention techniques, including special tests, manual therapy, and therapeutic exercise.

DPT 747 Physical Therapy Management of Select Populations (2 Credits)

Exploration of clinical practice related to specialty areas of physical therapy including pelvic health and other conditions related to gender-specific pathologies.

DPT 748 Prosthetics and Orthotics (2 Credits)

Design, fabrication, fitting and management of individuals requiring prosthetic and orthotic devices.

DPT 749 Neurological Assessment (1 Credit)

Physical therapy examination, evaluation, and assessment of individuals with neurologically based movement disorders.

DPT 751 Supervised Clinical Education (6 weeks – 4 Credits)

This full-time first clinical education experience provides students the opportunity to actively engage in experiential learning and develop introductory clinical competence. Students are responsible for transportation to and from off-campus experiences.

DPT 752 Supervised Clinical Education (7 weeks – 5 Credits)

This full-time second clinical education experience provides students additional opportunities for experiential learning and further development of clinical competence. Students are responsible for transportation to and from off-campus experiences.

DPT 753 Supervised Clinical Education (10 weeks – 7 Credits)

This third full-time clinical education experience provides students opportunities for refinement of their professional behaviors and examination skills, and development of intervention techniques. Students are responsible for transportation to and from off-campus experiences.

DPT 754 Supervised Clinical Education (13 weeks – 9 Credits)

The fourth full-time clinical education experience provides students the opportunity to further develop skills and display clinical competence as an autonomous physical therapist. Students are responsible for transportation to and from off-campus experiences.

DPT 760 Professional Issues (2 Credits)

Professional Issues pertinent to physical therapy including state and national associations, state and federal laws, standards of practice and code of ethics.

DPT 761 Physical Therapy Management and Administration I (1 Credit)

Foundational concepts of business principles for DPT students with an emphasis on leadership, administration, management, and professionalism.

DPT 762 Physical Therapy Management and Administration II (3 Credits)

General principles of organization and administration that impact the ethical and legal aspects of physical therapy practice.

DPT 770 Management of Lower Extremity Musculoskeletal Disorders (4 Credits)

Physical therapy examination, evaluation, and intervention for lower extremity musculoskeletal dysfunction. Emphasis placed on the process of clinical decision making to develop the student's ability to utilize examination findings to establish a differential diagnosis that informs intervention. Lab activities promote development of psychomotor skills in the application of examination and intervention techniques, including special tests, manual therapy, and therapeutic exercise.

DPT 771 Neurological Rehabilitation (4 Credits)

Emphasis on hands-on skill development, clinical reasoning, and critical analysis for treating individuals with neurologically based movement disorders.

DPT 772 Cardiopulmonary Rehabilitation (3 Credits)

Evaluation and treatment of patients with cardiopulmonary disease and dysfunction, emphasizing the response of cardiac, circulatory, and pulmonary systems to exercise.

DPT 774 Spine Assessment and Intervention (4 Credits)

Spine assessment and treatment, including mobilizations, special tests, and exercise progressions, in patients with spine dysfunction.

DPT 775 Screening for Referral (3 Credits)

A system-based approach to differential screening and diagnosis to determine if further medical referral is necessary.

DPT 778 Geriatric Physical Therapy (1 Credit)

This course will explore the physical and psycho-behavioral aspects of aging. Students will review typical physiologic response to aging and the effects of these changes on the function of older clients being treated in various physical therapy settings. A problem-solving approach to management of elder patients with varied degrees of medical complexity in multiple settings will be emphasized.

DPT 779 Pediatric Physical Therapy (3 Credits)

Examination of the factors affecting normal and pathologic development in infants and children to age 21 year. Additionally, treatment techniques appropriate to these populations will be covered.

DPT 781 Research in Physical Therapy I (3 Credits)

An introduction to clinical research in physical therapy, dealing with research design and methodology, as well as the development of a research project topic.

DPT 782 Research in Physical Therapy II (2 Credits)

Further development of the research topic, critical review of clinically relevant research literature, development of IRB application, and establishing the project timeline.

DPT 783 Research in Physical Therapy III (3 Credits)

Use of SPSS for physical Therapy related data analysis, including descriptive statistics, statistical inference, analysis of differences, and analysis of relationships.

DPT 784 Research in Physical Therapy IV (1 Credit)

Continuation of the Research track in Physical Therapy. Emphasis placed on data collection and application of applied research statistics.

DPT 785 Research Synthesis and Professional Competency Seminar (1 Credit)

Continuation of the Research track in Physical Therapy, with emphasis on research project completion and preliminary presentation to research advisors.

DPT Program Course Descriptions – Class of 2027

(Prerequisites: All courses open only to DPT students in good standing)

DPT 700 Orientation to Physical Therapy (1 Credit)

Provide the student with an orientation to the physical therapy profession including specific clinical education policies, procedures, and clinical placement.

DPT 705 Orientation to Clinical Education in Physical Therapy (1 Credit)

Disseminates information to students on contemporary professional issues in physical therapy as it pertains to clinical education.

DPT 711 Principles of Physical Assessment I (1 Credit)

Introduction to basic patient assessment skills, including surface palpation and vital signs.

DPT 712 Principles of Physical Assessment II (2 Credits)

Additional patient assessment skills, including manual muscle testing, reflex testing, sensory testing, and abdominal quadrant screening.

DPT 713 Principles of Physical Assessment III (2 Credits)

Additional Patient assessment skills, including goniometry, posture, anthropometric measures, with an introduction to patient history and documentation in SOAP note format.

DPT 715 Patient Care Techniques (3 Credits)

Performance and application of positioning skills, bed mobility, transfers, and gait training techniques (including assistive devices) across the continuum of care. Clinical reasoning skills in assessment, treatment design and intervention, goal development, and discharge planning for patients in the acute hospital environment.

DPT 716 Principles of Therapeutic Exercise in Physical Therapy (2 Credits)

A theoretical and practical approach to therapeutic exercise and functional training as it applies to all populations.

DPT 720 Gross Human Anatomy I (2 Credits)

The study of gross human anatomy, including muscle, tendon, ligament, and vascular supply of the upper and lower extremities. Co-requisite: DPT 721

DPT 721 Gross Human Anatomy I Lab (1 Credit)

Gross human anatomy lab with supervised exploration of muscle, tendon, ligament, and nerve innervation of the upper and lower extremities using a variety of resources. CO-requisite: DPT 720

DPT 722 Gross Human Anatomy II (2 Credits)

The study of gross human anatomy, including muscle, tendon, ligament, innervation and vascular supply of the head, neck, trunk, pelvic, thoracic, and abdominal regions. Co-requisite: DPT 723

DPT 723 Gross Human Anatomy II Lab (1 Credit)

Gross human anatomy lab with supervised exploration of muscle, tendon, ligament, innervation and vascular supply of head, neck, trunk, pelvic, thoracic, and abdominal regions using a variety of resources. CO-requisite: DPT 722

DPT 724 Pathophysiology (4 Credits)

Fundamentals of physiology and pathology related to diseases causing abnormal movement patterns or capabilities. Processes and diseases most frequently encountered in physical therapy practice emphasized.

DPT 726 Orthopaedic Foundations (3 Credits)

Principles of orthopaedic physical therapy including biomechanics, applied anatomy, and osteokinematic and arthrokinematics concepts. Musculoskeletal system investigation from histological, structural, and functional perspectives.

DPT 727 Health Promotion and Wellness (2 Credits)

This course will create a forum to prepare students for clinical competencies regarding health promotion/wellness as it relates to physical therapy.

DPT 728 Clinical Exercise Physiology (3 Credits)

Overview of the physiologic responses of the human body to exercise and training in normal and patient populations.

DPT 729 Pharmacology in Physical Therapy (2 Credits)

Actions and effects of pharmaceutical agents commonly encountered in physical therapy clinical practice.

DPT 735 Pain Neuroscience for Physical Therapy (1 Credit)

The neuroscience of pain and its application in physical therapy practice.

DPT 736 Neuroanatomy (3 Credits)

Anatomy of the central and peripheral nervous systems, emphasizing structure and functional relationships in normal and pathological states.

DPT 738 Motor Control (2 Credits)

This course will prepare students to understand and apply motor control principles as it relates to physical therapy.

DPT 740 Physical Modalities (3 Credits)

The clinical application of soft tissue techniques, thermal agents, intermittent compression, continuous motion, electrical stimulation, and mechanical traction.

DPT 742 Diagnostic Testing and Imaging (2 Credits)

Presentation of diagnostic tests and interpretation of results as it applies to physical therapy evaluation, intervention, planning, and treatment.

DPT 745 Integumentary System (2 Credits)

Clinical practice of wound care including assessment tools, dressings, and treatment approaches.

DPT 746 Management of Upper Extremity Musculoskeletal Disorders (4 Credits)

Physical therapy examination, evaluation, and intervention for upper extremity musculoskeletal dysfunction. Emphasis placed on the process of clinical decision making to develop the student's ability to utilize examination findings to establish a differential diagnosis that informs intervention. Lab activities promote development of psychomotor skills in the application of examination and intervention techniques, including special tests, manual therapy, and therapeutic exercise.

DPT 747 Physical Therapy Management of Select Populations (2 Credits)

Exploration of clinical practice related to specialty areas of physical therapy including pelvic health and other conditions related to gender-specific pathologies.

DPT 748 Prosthetics and Orthotics (2 Credits)

Design, fabrication, fitting and management of individuals requiring prosthetic and orthotic devices.

DPT 749 Neurological Assessment (1 Credit)

Physical therapy examination, evaluation, and assessment of individuals with neurologically based movement disorders.

DPT 751 Supervised Clinical Education (6 weeks – 4 Credits)

This full-time first clinical education experience provides students the opportunity to actively engage in experiential learning and develop introductory clinical competence. Students are responsible for transportation to and from off-campus experiences.

DPT 752 Supervised Clinical Education (7 weeks – 5 Credits)

This full-time second clinical education experience provides students additional opportunities for experiential learning and further development of clinical competence. Students are responsible for transportation to and from off-campus experiences.

DPT 753 Supervised Clinical Education (10 weeks – 7 Credits)

This third full-time clinical education experience provides students opportunities for refinement of their professional behaviors and examination skills, and development of intervention techniques. Students are responsible for transportation to and from off-campus experiences.

DPT 754 Supervised Clinical Education (13 weeks – 9 Credits)

The fourth full-time clinical education experience provides students the opportunity to further develop skills and display clinical competence as an autonomous physical therapist. Students are responsible for transportation to and from off-campus experiences.

DPT 760 Professional Issues (2 Credits)

Professional Issues pertinent to physical therapy including state and national associations, state and federal laws, standards of practice and code of ethics.

DPT 761 Physical Therapy Management and Administration I (1 Credit)

Foundational concepts of business principles for DPT students with an emphasis on leadership, administration, management, and professionalism.

DPT 762 Physical Therapy Management and Administration II (3 Credits)

General principles of organization and administration that impact the ethical and legal aspects of physical therapy practice.

DPT 770 Management of Lower Extremity Musculoskeletal Disorders (4 Credits)

Physical therapy examination, evaluation, and intervention for lower extremity musculoskeletal dysfunction. Emphasis placed on the process of clinical decision making to develop the student's ability to utilize examination findings to establish a differential diagnosis that informs intervention. Lab activities promote development of psychomotor skills in the application of examination and intervention techniques, including special tests, manual therapy, and therapeutic exercise.

DPT 771 Neurological Rehabilitation (4 Credits)

Emphasis on hands-on skill development, clinical reasoning, and critical analysis for treating individuals with neurologically based movement disorders.

DPT 772 Cardiopulmonary Rehabilitation (3 Credits)

Evaluation and treatment of patients with cardiopulmonary disease and dysfunction, emphasizing the response of cardiac, circulatory, and pulmonary systems to exercise.

DPT 774 Spine Assessment and Intervention (4 Credits)

Spine assessment and treatment, including mobilizations, special tests, and exercise progressions, in patients with spine dysfunction.

DPT 775 Screening for Referral (3 Credits)

A system-based approach to differential screening and diagnosis to determine if further medical referral is necessary.

DPT 778 Geriatric Physical Therapy (1 Credit)

This course will explore the physical and psycho-behavioral aspects of aging. Students will review typical physiologic response to aging and the effects of these changes on the function of older clients being treated in various physical therapy settings. A problem-solving approach to management of elder patients with varied degrees of medical complexity in multiple settings will be emphasized.

DPT 779 Pediatric Physical Therapy (3 Credits)

Examination of the factors affecting normal and pathologic development in infants and children to age 21 year. Additionally, treatment techniques appropriate to these populations will be covered.

DPT 781 Research in Physical Therapy I (3 Credits)

An introduction to clinical research in physical therapy, dealing with research design and methodology, as well as the development of a research project topic.

DPT 782 Research in Physical Therapy II (2 Credits)

Further development of the research topic, critical review of clinically relevant research literature, development of IRB application, and establishing the project timeline.

DPT 783 Research in Physical Therapy III (3 Credits)

Use of SPSS for physical Therapy related data analysis, including descriptive statistics, statistical inference, analysis of differences, and analysis of relationships.

DPT 784 Research in Physical Therapy IV (1 Credit)

Continuation of the Research track in Physical Therapy. Emphasis placed on data collection and application of applied research statistics.

DPT 785 Research in Physical Therapy V (1 Credit)

Continuation of the Research track in Physical Therapy, with emphasis on research project completion and preliminary presentation to research advisor.

DPT 790 PT Seminar (1 Credit)

Completion of research project with dissemination of results to faculty and clinicians.

Student Manual and Program Modifications

The program reserves the right to make changes as necessary in course offerings, curricula, academic policies, and other rules and regulations affecting students as noted in the DPT Student Manual, to be effective upon approval of the Program faculty. The student is responsible for knowing and fulfilling all degree-related requirements.

Clinical Education

The Role of Clinical Education in the DPT Program.

Students enrolled in the DPT Program will be required to participate in clinical education experiences in addition to the didactic coursework within the curriculum. As such, students will also participate in full-time clinical education rotations. Students will receive a Clinical Education Manual that details the policies and procedures, academic requirements, and rules and regulations of the clinical education process. The Clinical Education Manual will be reviewed by the student, the Director of Clinical Education (DCE), and the Associate Director of Clinical Education (ADCE) prior to participation in the first clinical education experience. Changes in the curriculum may occur as a natural result of the curriculum review process that occurs each semester. The Program has a curriculum committee that is responsible for curriculum review, periodic assessment, and recommendation of change based on the assessment process.

Documents for Clinical Education

During the second summer of the Program, students will be required to provide proof of current CPR certification and personal health insurance coverage to the Program. Additionally, students will be required to upload proof of immunization records, TB skin test results, and other health related documents (as required by individual affiliation agreements) to a third-party tracking and verification online company. This will provide students with an easy way to monitor, track, update, and forward required information to their future clinical affiliations. Bear in mind that if these documents are not provided, submitted, and accepted, the student may not be allowed to participate in the required clinical education component of the Program. For more specific details regarding immunizations and other health related tests, certifications, or requirements, refer to the Clinical Education Manual.

Scholarly Inquiry Project

One of the most important components of a doctoral education is the final scholarly project, which is completed toward meeting the requirements of the graduate degree. Students in the DPT Program are encouraged to collaborate with faculty to conduct a scholarly project. Completing a scholarly project is an integral component of the professional Program and an example of a lifelong learning endeavor. The future of professional practice depends on a growing percentage of clinical practitioners regularly engaging in the scholarly inquiry process, as the outcomes within physical therapy practice must continually be verified to gauge success, maintain competence, and advance the field.

In the WKU DPT program, each student must satisfy a scholarly project requirement. This requirement can be met in one of three ways: 1) student may undergo a research project or creative activity; 2) complete a professional paper (i.e., literature review), or 3) complete a case study report.

The project should demonstrate the student's ability to select a specific problem or topic, to assemble pertinent and necessary evidence/data, to organize ideas and data acceptably, and to prepare a written report in clear and effective English. Before embarking on any of these options, students must have their project, paper, or case report topic approved by their advisor or select from research projects proposed by DPT faculty.

Scholarly projects will be developed during DPT 781, DPT 782, and DPT 783 courses. During DPT 784 and DPT 785, the student will work with their advisor to conduct and complete the scholarly project.

The project proposal will be presented during DPT 782 at the WKU Student Showcase. Students may also present the project proposal at other local or state professional conferences during the second year of the program. The completed project will be presented during the students' final year within the curriculum as part of DPT 785 (DPT 790 for the 2027 cohort). Final projects must meet acceptable standards according to established criteria of grading rubrics.

Students in the Program are encouraged to disseminate the final project in a professional meeting, such as the annual APTA Combined Sections Meeting, and/or as a manuscript submission for publication. By the final year of the program, students will work with their advisor to determine if one or both dissemination options are appropriate for the project. When pursuing manuscript submission, the publication policy found in the DPT Program Policies and Procedures Manual (Policy P11) will be followed. This policy outlines an agreement between faculty and students regarding authorship of scholarly products. Unless authorship has been previously discussed with the faculty member and an alternative plan has been mutually agreed upon, the student(s) has/have 1 year in which to complete the process for publication dissemination of scholarly products. After that time, the contributing faculty member is free to pursue distribution of said scholarly material if the student(s) has produced no scholarship. The faculty member will notify the former student in writing of his or her intent to move forward with publishing the project and the former student will be included as a contributing investigator in the scholarly manuscript.

Core Performance Standards for DPT Students

Success in the DPT Program at WKU is most likely to be achieved when students come prepared to participate fully in the educational process. This preparation includes and assumes that students enter the Program with a minimum level of ability in specific areas, termed "**Technical Standards,**" and will continue to develop these and additional skills and attitudes, called the Professional Behaviors. The combination of technical standards and professional behaviors is referred to as the Core Performance Standards. The Professional Behaviors will be assessed periodically throughout the

Program. Inability to meet any of the Core Performance Standards may result in the need for remediation, probation, suspension, or dismissal from the Program. The Core Performance Standards are discussed in further detail below.

Technical Standards for Admission, Promotion, and Graduation

Physical therapy is an intellectually, physically, and psychologically demanding profession. Throughout the DPT Program, students acquire the foundation of knowledge, attitudes, skills, and behaviors needed throughout a physical therapist's career. These abilities needed for physical therapists to practice safely and competently are reflected in the Technical Standards that follow.

For successful completion of degree requirements, students must be able to meet these minimum technical standards with or without reasonable accommodation.

Observation Skills

Observations require the functional use of vision, hearing, and somatic sensations. Students must have visual perception which includes depth and acuity. Students must be able to observe lectures, laboratory dissection of cadavers, and lecture and laboratory demonstrations. The student must be able to observe a patient accurately, as well as observe digital and waveform readings and other graphic images to determine a patient's condition. Candidates must be able to observe patients and be able to obtain an appropriate medical history directly from the patient or guardian. Examples in which such observational skills are required include palpation of peripheral pulses, bony prominences, and ligamentous structures; visual and tactile evaluation for areas of inflammation; and visual and tactile assessment of the presence and degree of edema. Students must be able to observe a patient accurately at a distance and close at hand noting nonverbal as well as verbal signals.

Communication Skills

Communication includes speech, language, reading, writing, and computer literacy. Students must be able to communicate effectively, sensitively, and convey a sense of compassion and empathy with patients to elicit information regarding the mood and activities, as well as perceive non-verbal communications. Physical Therapy education presents exceptional challenges in the volume and breadth of required reading and the necessity to share complex information in ways that others can understand. Students must be able to communicate quickly, effectively, and efficiently in oral and written English with all members of the health care team. Students must be able to complete forms according to directions and in a timely manner.

Motor/Psychomotor Skills

Students must possess sufficient motor function to elicit information from the patient examination, such as by palpation, auscultation, tapping, and other evaluation maneuvers. Students must be able to execute movements required to provide general and therapeutic care, such as positioning large or immobile patients, conducting gait training using therapeutic aids and orthotics, positioning, performing manual mobilization techniques, performing non-surgical wound debridement, and

placing electrotherapy electrodes. Students must have the physical strength to perform cardiopulmonary resuscitation and other treatments for patients in the event of life-threatening emergencies. These skills require coordination of both gross and fine muscular movement, equilibrium, and the integrated use of touch and vision.

Intellectual – Conceptual Integrative and Quantitative Analysis Abilities

To effectively solve problems in a clinical environment, students must be able to measure, calculate, reason, analyze, integrate, and synthesize information in a timely fashion. For example, students must be able to synthesize knowledge and integrate the relevant aspects of a patient's history, physical examination, and laboratory data, provide a reasoned explanation for therapy, recalling and retaining information from peers, teachers, and the medical literature in formulation treatment plans is essential. In addition, students must be able to comprehend three dimensional relationships and to understand spatial relationships of structures within the human body. Students must have the ability to use computers for searching, recording, storing, and retrieving information.

Behavioral / Social Attributes and Professionalism

Students must possess the psychological ability required for the full utilization of their intellectual abilities, for the exercise of good judgment, for the prompt completion of all responsibilities inherent to diagnosis and care of patients, and for the development of mature, sensitive, and effective relationships with patients. Students must be able to tolerate physically and mentally taxing workloads and function effectively under stress. They must be able to adapt to a changing environment, display flexibility, and learn to function in the face of uncertainties inherent in the clinical problems of patients. As a component of their education, students must demonstrate ethical behavior.

Specifically, students must be able to:

1. Attend and participate in classes for 30 or more hours per week during each academic semester. Classes consist of a combination of lecture, discussion, laboratory, and clinical activities.
2. Use auditory, tactile, and visual senses to receive classroom instruction and to evaluate and treat patients.
3. Read, write, speak, and understand English at a level consistent with successful course completion and development of positive patient-therapist relationships.
4. Complete readings, assignments, and other activities outside of class hours.
5. Apply critical thinking processes to their work in the classroom and the clinic, exercise sound judgment in class and in the clinic, and follow safety procedures established for each class and clinic.
6. Display interpersonal skills as needed for productive classroom discussion, respectful interaction with classmates and faculty, and development of appropriate therapist-patient relationships.
7. Participate in Clinical Rotations which typically require students to be present 40 or more

hours per week on a schedule that corresponds to the operating hours of the clinical environment.

8. Perform treatment activities in class or in a clinical setting by direct performance or by instruction and supervision of intermediaries.
9. Maintain personal appearance and hygiene conducive to classroom and clinical settings.
10. Sit for 2-10 hours daily, stand 1-2 hours daily, and walk or travel for 2 hours daily.
11. *Frequently* lift weights less than 10 pounds and *occasionally* lift weights between 10 and 100 pounds.
12. *Occasionally* carry up to twenty-five pounds while traveling up to fifty feet.
13. *Frequently* exert seventy-five pounds of push/pull forces to objects up to 50 feet and *occasionally* exert 160 pounds of push/pull forces for this distance.
14. *Frequently* twist, bend, and stoop.
15. *Occasionally* squat, crawl, climb stools, reach above shoulder level, and kneel.
16. *Frequently* move from place to place and position to position at a speed that permits safe handling of classmates and patients.
17. *Frequently* stand and walk while providing support to a classmate simulating a disability or while supporting a patient with a disability.
18. *Occasionally* climb stairs and rarely negotiate uneven terrain.
19. *Frequently* use their hands repetitively with a simple grasp and frequently use a firm grasp and manual dexterity skills.
20. *Frequently* coordinate verbal and manual activities with gross motor activities.
21. Follow standards and policies specified in the Student Manual, the Education Affiliation Agreement (contract between university and clinical sites), and the Clinical Education Manual.

Professionalism

Students are expected to act responsibly and professionally when at the University and when away from the University on clinical education rotations. Professional behaviors are assessed by the student and CI during each clinical experience using subsets 1-4 (Standards for Professional Behaviors) of the Clinical Internship Evaluation Tool (CIET). By the terminal clinical experience, DPT 754, it is expected that each student attains “always” competence in professionalism on the final CIET self and CI ranking of subsets 1-4. Students are expected to observe state and national laws. Violations of ethical and legal practices, guidelines, and rules may result in dismissal from the Program and/or the University. A student may be placed on probation or dismissed from the Program if it determined that the student has demonstrated:

1. Conduct violating the ethical and professional standards of the profession.
2. Conduct violating the honor code, which strictly prohibits cheating, sabotaging, or plagiarizing.
3. Conduct unbecoming to a graduate professional student such as lack of respect for civil rights of all persons, and lack of professionalism towards administrators, faculty, staff, students, patients,

- and other individuals who interact with the Program and WKU University.
4. Conduct violating state and/or federal laws.

Student Professionalism Concern Report

As a DPT student and future physical therapist, you have chosen to pursue a profession which requires personal integrity, compassion, and a constant awareness of the commitment made. Exhibiting personal behaviors consistent with a respect for this profession and having pride in your work are central tenets of professionalism. You are expected to incorporate them into your daily life. To demonstrate commitment to these responsibilities while enrolled in the Program, you will be held to the professional standards as set forth in the Student Manual.

Violation of the classroom professionalism policy may simply result in providing the student with feedback on his or her behavior. However, if the breach is significant enough, the student will be asked to leave the classroom. This will result in an unexcused absence and a 2% reduction in the student's overall grade (See Class Attendance). The professor will also complete the **Student Professionalism Concern Report Form**, located in the Forms section of this manual. Once the form is completed, the student will meet individually with the Professor to discuss the situation.

Reasonable Accommodations for the Physical Therapy Program

WKU is dedicated to the equality of educational opportunity; it is committed to the creation and maintenance of a campus environment free of barriers that effectively discriminate against those with disabilities. In order to assure complete equality in access, we must also make reasonable classroom accommodation for students with disabilities, in the techniques we use in teaching them, and in the methods, we use for evaluating their progress. In the same vein, becoming a physical therapist requires the completion of a professional education program that is both intellectually and physically challenging. The purpose of this information is to articulate the demands of this Program in a way that will allow prospective students to compare their own capabilities against these demands, which are termed Technical Standards.

Applicants are asked about their ability to complete these tasks, with or without reasonable accommodation. If a student cannot demonstrate the skills and abilities outlined in this document, it is the responsibility of the student to request reasonable accommodation. Reasonable accommodation refers to ways in which the university can assist students with disabilities to accomplish these tasks (for example, providing extra time to complete an examination). **Reasonable accommodation does not mean that student with disabilities will be exempt from certain tasks;** it does mean that we will work with students having disabilities to determine whether there are ways that we can assist the student toward completion of the tasks.

Candidates for admission to the Program possessing a disability and who indicate that they can complete these tasks, with or without reasonable accommodation, are not required to disclose the specifics of their disabilities prior to an admission decision; however, prior to the start of DPT

classes, they must indicate that they can complete these tasks, with or without reasonable accommodation. Prospective students who cannot complete these tasks with or without accommodation is ineligible for consideration for admission. If admitted, a student with a disability desiring reasonable accommodation must request it in writing through the **Student Accessibility Resource Center** <https://www.wku.edu/sarc/>.

An offer of admission may be withdrawn if it becomes apparent that the student cannot complete the technical standards even with accommodation, *or* that the accommodations needed are not reasonable and would cause undue hardship to the institution, *or* that fulfilling the technical standards would create a significant risk of harm to the health or safety of others.

Prospective students who have questions about this information or who have a documented disability that may require assistance will need to contact SARC for coordination with academic accommodations.

Progression through the DPT Program: Student Policies and Procedures

Policies Relating to Admission to the Program

Recruitment

WKU is dedicated to the equality of educational opportunity, as well as the creation and maintenance of a campus environment free of barriers that effectively discriminate against those with disabilities. Qualified applicants who are permanent residents of any county located within the South Central, Western, or Purchase Area Health Education Service (AHEC) zones of Kentucky will receive special consideration for admission to ensure that this Commonwealth supported school provides physical therapists to meet the needs of Kentucky.

The DPT Program utilizes student recruitment procedures that are based on appropriate and equitable criteria and applicable law that are applied consistently and equitably. Students are recruited to the DPT program using a variety of techniques.

- A web page containing admission requirements and information <https://www.wku.edu/physicaltherapy/admissions.php>
- Direct recruitment with prospective students during college and high school recruitment fairs
- Physical Therapy Centralized Application Services (PTCAS)
- Communication with pre-physical therapy advisors at WKU and universities within the Program's service area
- Presentations and tours to prospective students, pre-physical therapy students, programs, and clubs

Admission to WKU DPT Program is without regard or discrimination based on race, color, ethnicity, national origin, creed, religion, political belief, sex, sexual orientation, gender identity/expression, marital status, age, uniformed services, veteran status, genetic information, pregnancy, childbirth or

related medical conditions, or physical or mental disability. However, students are informed that the process of becoming a physical therapist required the completion of an education program which is intellectually as well as physically challenging, that the candidate should be able to perform in a reasonably independent matter, and that reasonable accommodation does not mean that students with disabilities are exempt from certain tasks. Admission procedure and requirements to the DPT Program are clearly outlined in the admission section of the program webpage (<https://www.wku.edu/physicaltherapy/admissions.php>).

Transfer of Credits

It is not anticipated that many students would have credits to transfer into the DPT Program, except under unusual circumstances. If the student has credits from a CPATE accredited DPT program, he/she should refer to the University Handbook for institutional policy on the transfer of credits and consult with the Department Chair. All potential Program transfer credits for the DPT Program must be submitted for approval prior to enrollment in the DPT Program. Students must provide transcripts and a course syllabus or catalog with a course description so a determination can be made regarding the specific transfer credit request. All credit transfers will be evaluated by the DPT Admissions Committee and Department Chair.

Policies for Student Admitted to the DPT Program

Advisement of Students

DPT faculty serve as advisors for the purposes of academic or personal guidance or support. Upon matriculation into the program, advisement of first year students will be conducted by the DPT faculty instructing Gross Human Anatomy and/or Physical Assessment I. Beginning in the fall semester of year 1, each student's advisor will be the DPT faculty who is mentoring his/her scholarly project.

Students are expected to formally meet with their assigned advisors at the beginning of the fall semester of year 1 and by the end of spring semester of year 3. Students are encouraged to initiate additional advisement with their advisors as needed for the purposes of academic or personal guidance or support.

In the 3rd year of the curriculum, a final formal advisement meeting occurs to review the student's self-assessment of performance on a comprehensive exam and his/her study plan for the NPTE (the comprehensive exam and student plan are grading requirements in DPT 785 – beginning with Class of 2028).

All formal advisement of a student will be documented to include the date of advisement, general issues discussed, and any action plan that is to be instituted including the need/plan for a subsequent advisement session. The documentation for the advisement session should be signed by the advisor and student, saved as a PDF to be placed in the student's departmental file, and a copy emailed to the student.

Alternative advisement for students in the second- or third-year cohorts during summer semesters is provided if their advisor does not hold summer instructional assignments. The alternative advisement of students in these circumstances will be conducted as follows: the Program Director and Program Coordinator will advise students in the second-year cohort; and the Director of Clinical Education and Associate Director of Clinical Education will advise students in the third-year cohort.

At the end of each semester, course instructors will inform a student's advisor of an earned course grade of 'C'. The advisor will review the student's transcript to determine the number of credit hours of 'C' grades the student has earned in the program and the need for an advisement meeting. Students who earn a 'C' in any didactic courses will meet with their academic advisor to develop and implement a remediation plan. Dropping below a cumulative GPA of 3.0 will result in graduate school probation. **(see Committee for Academic Student Success).**

Academic Misconduct

Academic integrity and ethical behavior are cornerstones of a high-quality educational environment and is a legitimate concern for every member of the campus community. The Physical Therapy faculty fully embraces the University policy of accepting no form of academic misconduct. Students enrolling in WKU assume the obligation to conduct themselves in a manner compatible with WKU's function as an educational institution. WKU's policy on plagiarism and other forms of academic dishonesty is that it will not be tolerated. As a student at WKU, you are expected to demonstrate academic integrity, as outlined in the University's "Student Code of Conduct"

<https://www.wku.edu/studentconduct/student-code-of-conduct.php>; WKU Graduate Catalog, <https://catalog.wku.edu/graduate/student-conduct/>.

Violations of academic integrity as outlined by the Student Code of Conduct constitute Academic Misconduct and will not be tolerated. Dishonesty, such as cheating, plagiarism, misrepresenting of oneself or an organization, knowingly furnishing false information to the University, or omitting relevant or necessary information to gain a benefit, to injure, or to defraud the University is prohibited. <https://www.wku.edu/studentconduct/student-code-of-conduct.php>

Anyone who commits such acts will be held accountable for violation of the Student Code of Conduct. Examples of academic dishonesty as outlined by the code include, but are not limited to, cheating (by giving, receiving, or attempting to give or receive unauthorized information before or during an exam or assignment), plagiarism (turning in work that is not your own-including, but not limited to, quoting material in a paper, and not crediting the original author through proper citation, copying from a book, pasting text from a webpage, using an internet source, or any other computer-based-artificial intelligence source to obtain all or part of a paper), or misrepresentation (lying).

Sanctions for academic misconduct are outlined in the WKU Graduate Catalog (<https://catalog.wku.edu/graduate/student-conduct/>). In accordance with this policy, the Program has adopted a “zero tolerance policy” for any acts of cheating, plagiarism, or other forms of academic dishonesty/misconduct. Under this policy, any student found to have committed such an act will be brought before the Academic Review Committee (ARC). If the student is found to be guilty of an act that violates the academic standards for performance, a grade of “F” will be given to that portion of the coursework in which the act is detected or given for the course in which the act was discovered. If a grade of “F” is given for the course, then the Department Chair will recommend to the Dean of the Graduate School that the student be subsequently dismissed from the Program. The student must sign the attached statement as to his/her understanding of the DPT Program Academic Dishonesty Policy located in the Form section of this manual.

Academic Standing in the DPT Program

Each course within the DPT curriculum is graded with letter grade [A-C, F] with the exception of Clinical Education courses, which are graded as Pass or Fail. Criteria for the progression of the Program as well as for student readiness to engage in clinical education include appropriate course grade; cumulative program GPA of at least 3.00 out of 4.00; compliance with technical standards; and appropriate performance in Professional Behaviors. Students who fail to meet established criteria may either be dismissed or be offered the opportunity to withdraw from the Program.

At the completion of each academic term, the Program faculty will review each student’s performance to determine if academic and clinical standards are met, allowing for progression within the curriculum or graduation. The faculty reserves the right to examine extenuating circumstances in each case of non-acceptable academic and/or clinical performance. The student may be required to provide documentation to support any extenuating circumstances. The student who passes all her/his academic and clinical coursework satisfactorily will progress in the Program and graduate. Required academic standards for progression are based on the **Course Policies** and are as follows:

1. *Academic Course Grade Requirement*

A Grade of “B” (80%) is expected to be maintained in all course work. A grade of “F” constitutes poor performance and unsatisfactory work and will result in recommendation of dismissal from the Program.

2. *Semester/Cumulative Grade Point Average (GPA) Requirement*

A minimum cumulative GPA of 3.0 must be maintained in accordance with the WKU Graduate School policy. If the student does not maintain this requirement, the student will be placed on Graduate School Academic Probation (see Probation) and if not attained the following semester, the student will face Program dismissal. The student’s status in the Program will be determined by the Department Chair on the recommendation of the Academic Review Committee (ARC) regarding the student’s action plan for remediation, probation, or dismissal.

3. *Clinical Education Course Grade Requirement*

Each clinical education course must be passed with a grade a P (pass). Students should refer to the Clinical Education Manual for specific information on clinical education requirements. Depending on the circumstances, if the student receives an incomplete on a clinical rotation, she/he may have the opportunity to continue or retake the rotation and then proceed in the Program from that point on. Recommendations from DCE/Associate DCE, and/or the ARC as necessary, will be made to the Department Chair in this instance. A failure in a clinical education course will result in recommendation for dismissal from the Program.

4. *Professional Behaviors and Technical Standards*

Students in the DPT Program must demonstrate appropriate behaviors according to the Technical Standards document. Because these standards reflect behaviors necessary for success as a physical therapist in the clinical environment, failure to demonstrate appropriate behaviors can result in remediation plans aimed at addressing the specific deficiencies in professional behaviors that may include:

- A need for additional coursework
- Additional clinical time
- Professional Behavior Warning status
- A delay in progression or dismissal from the Program

Academic Review

Each semester the core DPT Program faculty will meet to discuss the progress each student is making towards curriculum progression and meeting the qualifications for graduation.

Students with demonstrated academic deficiencies and/or professional concerns in didactic courses will be addressed by the course instructor/CI (see Course Policies). Academic deficiencies and/or professional concerns that were not successfully addressed with the course instructor/CI will be reviewed with the student's academic advisor (for deficiencies occurring in association with didactic courses) or Director of Clinical Education (for deficiencies occurring in association with clinical courses) to determine the need for advising or remediation, or for referral to the CASS.

If during the academic review, it is determined that a student's semester GPA falls below a 3.0 and the cumulative GPA remains above 3.0, the student will be referred to the CASS for further academic review (see DPT Program Probation).

Associated faculty will report any course grades of C or lower to the Department Chair who will report the course grade to the student's academic advisor. Upon notification by the core faculty instructor of Department Chair (for associated faculty), the academic advisor will review the student's transcript to determine the total credit of 'C's' and develop a remediation plan as per the Advisement policy or referral to the CASS.

Committee for Academic Student Success

The CASS consists of three DPT Program faculty members who oversee academic and professional behavior issues for students in the DPT Program. Their role is to ultimately determine if any disciplinary action is warranted and make recommendations concerning such action to the Department Chair. They will meet as necessary when a student action is referred to the CASS.

Academic and/or student issues may be referred to the CASS in any of the following cases:

1. Unsafe or unprofessional behavior at a clinical site or classroom that is not successfully managed by the course instructor/CI (Course Policies)
 - The CASS will consider recommendation of remediation by the advisor or DCE
2. Professionalism concerns that occur outside the classroom or clinic
 - The CASS will consider recommendation of remediation by the advisor or DCE
3. Earning more than 3 credit hours of 'C's' in the summer semester of year 1 curriculum (see Program Dismissal Procedure)
4. Receiving a semester GPA less than 3.0 while regardless of the cumulative GPA (see DPT Probation)
 - The CASS will consider recommendation of DPT Probation with remediation.
5. Receiving a letter grade of 'C' in any didactic course
 - The instructor of record has the right to refer a student to the CASS to determine the need of a remediation.
6. Failure of a third attempt of any competency check-off or practical exam
 - The CASS will consider recommendation of DPT probation with remediation, postponement of the placement of the student in clinical internships, or dismissal from the program
7. Facing Graduate School Academic Probation more than one time during the entirety of the program (see Probation)
 - The CASS will consider remediation or dismissal from the Program.
8. Inability to rectify DPT probationary status with the time frame allotted by the CASS
 - The CASS will consider the recommendation of dismissal from the Program
9. Any clinical performance that is deemed unsatisfactory
 - The DCE/ADCE will provide the student remediation plan to the CASS
10. A student who is suspected of Academic Misconduct
 - The CASS will give the student an opportunity to review the accusation and make a response
 - If the student is found guilty, the CASS will notify the course instructor who will give a grade of "F" in that portion of the coursework in which the act was detected or given for the course in which the act was discovered

Disciplinary actions referred to the CASS are confidential. The CASS's recommendations for probation, dismissal from the Program or other disciplinary actions will be forwarded to the Department Chair. The student will have an opportunity to review the decision of the committee.

The Department Chair will make the final program determination regarding probation, program dismissal, or disciplinary actions, and will subsequently notify the Executive Director, Graduate Studies of the Program recommendation.

Probation

Students may be placed on probation if they fail to meet Program standards in the areas of academics, professional behaviors, and/or clinical performance as noted below:

[Graduate Studies Academic Probation](#)

As per the academic standing policy noted in the most recent Graduate Catalog (<http://catalog.wku.edu/graduate/enrollment/>), students must maintain a minimum grade point average of 3.0 in the academic program and a cumulative (overall) GPA to earn a degree or certificate. If a student's overall GPA falls below 3.0, the student will be placed on academic probation. Students placed on academic probation are not eligible for graduate assistantship appointments. The student will have one additional full-time semester or the equivalent (9 semester hours) to remove the academic probation by raising their cumulative GAP to a 3.0 or higher.

In most cases, the probationary period will extend through one ensuing full-time semester or 9 hours of gradable credit. In the event of Graduate Studies Academic Probation at the end of a Spring semester, the probationary status may extend through the Summer and Fall semesters. If the GPA remains below a 3.0 after completing 9 hours of coursework on probation, the student will be academically dismissed from Graduate Studies. An academic dismissal from Graduate Studies will constitute dismissal from the DPT Program.

[Doctor of Physical Therapy \(DPT\) Probation](#)

A student who meets any of the following criteria will be referred to the ARC and a recommendation will be made to the Department Chair regarding subsequent action which could include dismissal, DPT probation with applicable time frame, a warning, and/or remediation:

- A semester GPA falls below a 3.0
- A student who faces Graduate Studies Academic Probation more than one time
- Infraction(s) of professional behaviors reported to the CASS
- A student on probation whose actions warrant probation in another category (academic, professional behavior, clinical, non-academic reasons)
- Any clinical performance that is deemed unsatisfactory and reported to the CASS

The CASS will make all recommendations for DPT probation to the Department Chair. The Department Chair will make all disciplinary decisions and notify the student of such actions. The CASS reserves the right to recommend duration of probationary time frames. If a student is placed on DPT probation a second time for any reason, the CASS will make recommendations regarding dismissal, DPT probationary time frame, and/or remediation to the Department Chair.

Remediation

Students may be placed on a remediation plan when academic deficiencies, clinical deficiencies, or professional behavior issues are identified. The remediation plan is developed between the student and course instructor, academic advisor, DCE/ADCE or CASS.

All students are encouraged to review their performance on each of their exams. If a student scores less than 80% on an assessment (exam, quiz), the student should schedule an appointment with the instructor of record within 7 business days to discuss content and develop a remediation plan as needed. Should the student fail to make or keep the appointment with the instructor of record, the student's advisor will be notified.

In the event that a student is placed on Graduate Studies academic or DPT probation, the CASS may request that remediation activities be initiated. In this case, a remediation plan will be developed between the student and CASS, which will detail certain standards and expectations for the student to fulfill in order to continue in the Program. A plan will be presented addressing identified areas of weakness and suggested methods to assist with remediation, or satisfactory completion of that plan. Specific goals related to enhancing deficiencies with the student's academic or professional behaviors will be addressed and expected to be rectified within a certain period of time.

This plan will be forwarded to the Department Chair for approval. Once approved, the student will follow the plan and be given suggestions to help with successful completion of future course work. Unsatisfactory completion of the plan or additional beaches in professional behaviors, academic performance or clinical performance while completing this plan will result in dismissal from the Program.

The procedures for remediation related to clinical deficiencies are outlined in the **Clinical Education Handbook**.

Program Dismissal Procedure

The DPT Department Chair will inform the Executive Director of Graduate Studies of a student dismissal from the Program in any of the following cases:

- 1. An earned "F" in any didactic course.**
- 2. A grade of "C" is earned in more than 3 credit hours of courses offered during summer semester of year 1 curriculum**
- 3. An earned "Fail" in any clinical course.**
- 4. Withdrawal from the Program as constituted by voluntarily withdrawing from course/course(s) in which the student is enrolled without approval by the student's advisor.**

A student will be referred to CASS to determine if a recommendation for dismissal is appropriate from the WKU DPT Program in any of the following cases:

1. Failure of a third attempt of any competency check-off.

2. Failure of a third attempt of a practical exam (different than the competency check-off).
3. Inability to rectify probationary status within the time frame allotted by the CASS.
4. Unsafe or unprofessional behavior at a clinical site or classroom.

Deceleration Policy

In the event that a student is dismissed from the WKU DPT Program, he/she will have the option to be readmitted but must initially submit an **Appeal of Graduate Policy**

1. Appeal of Dismissal of a student by Graduate Studies. As stated in the Graduate Catalog – Academic Standing Section (<http://catalog.wku.edu/graduate/enrollment>).
 - a. “An academically dismissed student who wishes to be readmitted to his/her program must submit an Appeal of Graduate Policy, and, in consultation with their advisor, an Academic Plan detailing how the required 3.0 PGA will be obtained. The Appeal of Graduate Policy must be submitted to Graduate Studies in the semester following dismissal and provide evidence of the support of the graduate faculty in the academic program. Each case will be reviewed by the Executive Director of Graduate Studies for consideration of readmission”.
 - b. “Readmitted students will remain on probation and must successfully complete the requirements of his/her Academic Plan to attain a 3.0 cumulative GPA in the specified time frame. Readmitted students who do not attain the requisite 3.0 will be dismissed with no possibility of readmission until a period of three years has elapsed.
2. Appeal of Dismissal of a Student by the DPT Program:
 - a. Upon receipt of the dismissal notification, the student must schedule a meeting with the Program Director, the Committee for Academic and Student Success (CASS), and/or their assigned Advisor. The purpose of this meeting is to review the decision for removal, clarify the reason(s) for dismissal, and explain the appeal process including timelines.
 - b. The student must complete the DPT Student Appeal Form, provided in the Forms section of this manual, entirely. The form must include:
 - A student rationale outlining extenuating circumstances
 - Reflection on barriers to success and strategies for overcoming them
 - A proposed study plan for academic and professional improvement
 - If a student is dismissed based on earning more than 3 credit hours of “C” in courses offered during summer semester of year 1 curriculum, plans to retake all courses in which a grade less than a “B” was earned are identified.
 - c. The completed appeal form and any supporting documentation must be submitted to the student’s advisor within the agreed timeline during the initial meeting.
 - d. The advisor and/or CASS will review the appeal, along with the student’s academic record, and any supporting documentation. Following this evaluation, the appeal and all related materials will be presented to the DPT faculty, who will convene and vote by majority to recommend approval or denial. This recommendation will then be forwarded to the Program Director to inform the final decision.
 - If the appeal is denied: The dismissal stands, and the student will be withdrawn from the program.
 - If the appeal is approved: The student will be reinstated in a decelerated status, joining the subsequent cohort in the program sequence

- e. Upon reinstatement following a successful appeal, continuation through the program may be contingent upon meeting specific conditions determined by the Faculty and Program Director. Conditions may include, but are not limited to:
- Maintaining a 3.0 cumulative GPA
 - Successfully retaking designated course(s) or lab(s)
 - Completing a remediation plan as determined by the CASS
 - Adhering to a probationary period with regular academic progress reviews
 - Failure to meet the conditions of reinstatement will result in immediate recommendation for dismissal from the program.

Dissemination of Information

Dissemination of information that directly affects all prospective and enrolled students will be sent in a timely manner to assure that all prospective and enrolled students understand the rules and regulations related to admission, matriculation, and progression through the Program. **All students must open and maintain a WKU e-mail account for the duration of their educational program. The faculty will use that account when corresponding with students.** Prospective students will receive information regarding admission requirements, the academic and clinical education portions of the curriculum, licensure, accreditation status of the Department, career opportunities, tuition costs, general information regarding financial aid, health care costs, housing, and the WKU campus. Enrolled students will receive the WKU DPT Program Student Manual during orientation. This will include the Educational Philosophy and Mission Statement, curriculum plan, tentative calendar, course descriptions, policies, rules and regulations, general information regarding clinical education, and a brief introduction to the faculty. Each student will be advised to visit the WKU Graduate School web site to familiarize students with grants, scholarships, available financial services, counseling services, testing services, and Telemedia services.

Drugs and Alcohol

There will be no tolerance of alcohol or recreational drug use during class or clinic hours. In accordance with the Drug-Free Schools and Communities Act Amendment of 1989, WKU is committed to the prevention of alcohol or other drug abuse and use on campus. If a student appears to be under the influence of alcohol or recreational drugs, the student will be immediately referred to the ARC and the student will not be allowed to participate in classroom or clinical activities until the situation has been resolved. This may result in dismissal from the Program (See Criminal Background Check and Recreational Drug Screen, p. 47)

Health Risks and Injuries

Health Condition of a Continuing Nature

In any situation where a student has a notable change in medical status, the student must be cleared by a primary care provider before the student can resume either the clinical affiliation or coursework. In the event of pregnancy, students may continue clinical affiliations in accordance with agency policy or may be required to reschedule the clinical rotation with the DCE.

Health Risks

Students will be informed of health risks that they may encounter throughout the educational program and will follow the OSHA and/or University regulations and standard precautions as stated in the Clinical Education Manual.

Student Injury in the Classroom or Clinical Area

1. The faculty member and/or supervising clinical personnel will assess the extent of injury to determine if the student can remain in the classroom or clinical area.
2. If the student requests medical care, the faculty member and/or supervising clinical personnel will assist the student in obtaining appropriate care.
3. The student and faculty member and/or supervising clinical personnel must complete the WKU Accident/Incident Report for Non-Employees https://www.wku.edu/ehs/forms/accident_report_non-employee.php if required by the University or clinical agency.
4. The faculty member and/or supervisor clinical personnel have the right to not allow the student to participate in class based on the extent of the injury.
5. In the case of emergency, the student is responsible for the cost of emergency services in off-campus education experiences.

Honor System

All students are expected to act honorably and ethically in all aspects of student and professional life. There is no tolerance for violations such as lying, cheating, plagiarizing, or sabotaging. Respect for the rights of others and tolerance of individual and cultural differences is expected of all students at all times. Violation of the honor code and/or the rights of others may result in dismissal from the Program. Students are expected to comply with these APTA Professional documents (Code of Ethics, Guide for Professional Conduct and Standards of Practice for Physical Therapy) on the APTA website: <http://www.apta.org/Ethics/Core>. These resources are utilized in the DPT curriculum.

Informed Consent/Release of Liability

If a student wishes to audio or video record a class, the student must receive permission from the instructor. The **Audio/Video/Photograph Consent form** is provided in the Forms section of this manual.

Each student is required to sign the **DPT Program Assumption of Risk/Release of Liability form**, provided in the Forms section of this manual, to acknowledge risk involved with the demonstration and practice of clinical skills. Also included with the Student Manual is the **Student Demonstration and Informed Consent form** explaining the potential risk involved with demonstration and practice of clinical skills required by the WKU DPT Program. Each student in the Program needs to sign these forms in the back of the Student Manual prior to initiating any clinical activities. Lack of a signature will preclude students from participating in these activities.

Retention of Students

Students are the focal point of the Program and the ability to address their issues of concern is crucial to its success. There are always open lines of communication between faculty and students. For example, students are encouraged to seek faculty consultation on any academic or professional issue they believe is pertinent to their success in the Program. Each student is assigned a faculty advisor and is required to meet at least once per academic year. They also have the option of seeking further help as needed. Faculty provide individual counseling, maintain regularly scheduled office hours, and offer open labs to assist in competency checkoffs. Students may also access the Student Accessibility Resource Center (SARC) if reasonable accommodations are needed (<https://www.wku.edu/sarc/>).

Student Resume

Students will be expected to create and regularly update an expanded professional resume. The expanded resume will be used to compile the student's academic and professional activities and performance throughout their tenure in the Program. This should include information regarding local, state, and national physical therapy activities and courses attended; academic items-examples of work deemed appropriate to include in a resume, service activities participated in and involved with; professional organizations, research, education, clinical experience, and other associated items at the discretion of the Program faculty, advisor, and student.

Graduation Requirements

Students are required to follow the plan of study for the DPT Program. Students must be in compliance with the conditions and requirements for graduation – such as completing all coursework – as set forth by the University. Students who fail to meet the necessary requirements will not be approved for graduation. Under extenuating circumstances, the Department Chair, with input from the Curriculum Committee, may develop an alternate plan of study for a student.

Students must complete the application for graduation for the DPT degree the semester before completion of the term in which he/she expects to complete degree requirements. The information regarding the application for graduation and subsequent fees may be found on the WKU Registrar's webpage: https://www.wku.edu/registrar/graduation_application.php. Failure to file at the appropriate time and pay the required fees may delay graduation. Upon successful completion of the DPT course of study, students will be awarded the DPT degree. All candidates for the DPT degree are encouraged to attend commencement exercises at the time which degree is conferred.

National Licensing Examination

The Department Chair of the DPT Program will endorse the graduate of the DPT Program in his/her application to complete the national licensing examination as directed by the Federation of State Boards for Physical Therapist (FSBPT). Students should begin completing the application process prior to graduation and should plan to take the licensing examination as soon as they are eligible.

The Department Chair of the DPT Program will recommend the graduate for state licensure as required by the licensing process for the individual states. Students are responsible for obtaining the application for licensure in the weeks prior to graduation.

DPT Comprehensive Examination

In an effort to assist students in preparation for the national licensing examination, students are expected to pass a Comprehensive Program examination in DPT 785 (790 for the class of 2028). Students will be allowed 2 attempts and have until the end of the spring semester year 3 to pass the examination. An IP grade will be issued in spring semester year 3 if the student does not pass the exam on attempt 2. If the in-progress grade is not resolved at the end of the spring semester year 3, a remediation plan will be developed by the course instructor at his/her discretion. The student will have additional attempt(s) to pass the examination, resolving the in-progress course grade. Resolution of the in-progress grade must occur before the end of the ensuing fall semester. Receipt of an in-progress grade may result in delay of graduation and the student's ability to register for the July NPTE. Failure to resolve the in-progress grade within the ensuing fall semester will result in failure of DPT 790 and dismissal from the Program. Failure to resolve the incomplete grade within the ensuing semester will result in failure of DPT 790 and dismissal from the Program.

Policies for DPT Courses and Classes

Auditing Classes

No classes may be audited by those not admitted to the WKU DPT Program without the consent of the instructor. Physical Therapy students wishing to audit a class or bring a visitor should also gain permission from the instructor.

Class Attendance

Students are required to attend all classes at the scheduled times and will have points deducted if they are tardy or absent. It is the student's responsibility to notify the instructor or the Program Office

Associate/Coordinator prior to class if an unavoidable absence is anticipated. A student's absence is considered unexcused if he/she does not notify the instructor/professor prior to the assigned time, although notification in and of itself does not make it an excused absence. As such, 2% of the total grade will be taken off per unexcused absence for each scheduled hour of lecture and/or lab missed.

Unexcused lecture class absences will result in a final course grade deduction per the following formula:

<u>Term Length</u>	<u>Schedule</u>	<u>Unexcused Absence Deduction</u>
4-5-week Course	3-hour block	6%
6-week Course	3-hour block	6%
8-week Course	2-hour block	4%
8-week Course	4-hour block	8%
10-week Course	2.5-hour block	5%
10-week Course	1.5-hour block	3%
16-week Course	1-hour block	2%
16-week Course	2-hour block	4%
16-week Course	3-hour block	6%

Methods for tracking attendance will be left to the discretion of the course instructor, allowing each to employ a method that he/she finds most effective.

Students are considered **tardy** if they arrive for class after the scheduled starting time up to 15 minutes late. As such, 1% of the total grade will be taken off per unexcused tardiness occurrence. Arrival after 15 minutes of the scheduled start time is considered an absence.

If the student anticipates being late, he/she must notify the instructor or Program Office Associate/Coordinator prior to class. It is the instructor's discretion whether or not notification of absence or tardiness is excused. In order to be excused from tardiness, the student must provide evidence or documentation for the tardiness to the instructor/professor within 24 hours after attending the class. However, this is at the discretion of the instructor.

Students with excessive unexcused absences or tardiness will be called before the ARC to discuss their behavior and continuance in the Program, and such a meeting may result in probation or Program dismissal for the student. A student missing a class or laboratory assignment other than observance of a religious holiday may or may not have the opportunity to make up missed work, depending on the reason for the absence and if the student notifies the instructor in advance.

Religious Holiday Notification

Any student missing class quizzes, examinations, or any other class or lab work because of observance of religious holidays shall be given an opportunity during that semester to make up missed work. Such make-up work will apply to the religious holiday absence only. It shall be the responsibility of the student to notify the instructor no later than the second week of the semester of his/her intention to participate in religious holidays that do not fall on state holidays or period of class recess. This policy shall not apply in the event that administering the test or examination at an alternate time would impose an unavoidable undue hardship on the instructor or the university.

Course Policies

1. All students are required to be skilled in all course content. Attendance is mandatory for all lecture and lab sessions. **Tardiness will not be tolerated.** If a student is unable to attend due to illness or other extenuating circumstances, the instructor must be contacted prior to class or as soon as the student's health/safety allows. The student will be held responsible for all missing information.
2. Exams must be taken on the scheduled dates and assignments are to be handed in on their due dates. Late assignments without prior approval from the instructor may be subject to a penalty assessment in accordance with individual course syllabi. Make-up exams will not be given unless prior arrangements are made with the instructor.
3. All submitted homework assignments must be legible. Students who are asked to resubmit assignments will be held to the late assignment policy (See #2 above).
4. For academic performance concerns, the student should request a meeting with the course instructor to review topics of concern and/or arrange for formal advisement. The instructor of record will notify the student's academic advisor in writing of the advising session and invite the advisor to be involved with formal advisement when appropriate. These formal advising sessions are to be documented and filed in the student's file.
5. Any breach of professional behavior will be immediately addressed by the instructor or CI in charge (**see Professional Behaviors**). Should the student not follow up on the instructor/CI recommendations, the student's advisor will be informed of the incident and will document and forward the information to the ARC Chair as appropriate. If a remediation plan or formal advising by the advisor of ARC is required, this plan or advisement will be documented and filled in the student's file.
6. A grade of "B" (80%) is expected to be maintained in all didactic course work. Any grade below that of 80% reflects unsatisfactory work at the graduate level and as all work builds on preceding concepts, the following format will be followed:
 - a. A student earning a grade of <80% on any course examination, other than a final exam, is advised to seek individual counseling with the course instructor within 7 business days of receiving the examination grade. The course instructor will document the meeting, subsequent meetings, and remediation plan (if applicable) and place the documentation in the student's file. (**see Academic Review**).
 - b. If a student's average score in any class is below 80% at any point during the semester, the student is required to seek individual counseling with the course instructor to remedy the grade in question. At the discretion of the course instructor, a remediation plan may be developed. The student may also seek additional counseling with their academic advisor. (**see Advisement**).
 - c. If a student's cumulative GPA falls below a 3.0 at semester end, the student will automatically be placed on Graduate School Academic Probation and be notified of this status (**see Probation**).
7. A student earning a final course grade of 'C' will be reported to his/her academic advisor for transcript review and determination of subsequent action (**see Academic Review**).

8. A student earning an “F” in any didactic course will be reported to the Department Chair who will consider recommendation of dismissal from the Program.
9. A student earning a “Fail” in any Clinical Education course (DPT 751-754) will be reported to the Department Chair who will consider recommendation of dismissal from the Program (see Program Dismissal Procedure).
10. A student earning more than 6 credit hours of “C’s” in any of the didactic courses will be reported to the Department Chair who will consider recommendation of dismissal from the Program.
11. Within courses that have clinical competency assessments, a student will be given 2 additional opportunities to pass a failed competency check-off or practical exam (see **Clinical Competency Assessments**). Failing a competency check-off or practical 3 times will result in a failure of the competency assessment and may result in failure of the course as well regardless of the grade in the course prior to the third failed competency assessment. **Therefore, it is highly recommended that the student consult with the professor prior to attempting the third attempt.**
12. **At the instructor’s discretion, a breach of safety or professional behavior** may result in automatic failure of the practical or check-off.
13. If a student is suspected of academic misconduct, including cheating, plagiarism, and/or misrepresenting oneself, the student will be referred to the ARC and receive disciplinary action as outlined in the Academic Misconduct Policy if found guilty (see **Academic Misconduct**).

Grading Policies

Numeric and Letter Grade Translation

Grading Scale:

- A 90-100
- B 80-89
- C 70-79
- F <70

Clinical Competency Assessments

The WKU DPT Program may utilize either lab check offs and/or practical exams in courses where clinical skills are taught. The purpose of evaluating such clinical competencies is to ensure that the student can integrate cognitive and psychomotor abilities necessary to perform skills in a safe, accurate, and professional manner in the clinical setting. Lab checkoffs may be assessed on a pass/fail or scored basis, and acceptable on a scored check-off is 80% or better. Practical exams will be numerically graded according to course specific rubrics.

Lab Checkoffs

Lab checkoffs may be graded on a pass/fail or scored basis. A *pass* constitutes clinical readiness for that skill, a *fail* constitutes a lack of clinical readiness. Acceptable on a scored check-off is 80% or better. Each instructor will grade students on all performance criterion using their professional

judgment in regard to the following areas:

- Quality of care
- Supervision/guidance required (verbal cueing)
- Accuracy/consistency of performance
- Complexity of task/environment
- Efficiency of performance

At the instructor's discretion, a breach of safety or professional behavior may result in automatic failure of the practical or check-off.

Each student will be given 3 opportunities to pass each individual check-off. The initial check-off will be scheduled as per instructions in the course syllabi. If the student fails, they will have 2 additional opportunities to pass during the semester. All checkoffs must be completed and passed, or the student will not be allowed to take the next practical exam. Consistent with course policy, if the student does not pass in 3 attempts, a failure in the check-off will occur and the student will be referred to the CASS.

Practical Exams

Successful completion of a practical exam is contingent upon the student acting in a safe manner and achieving a grade of 80% or better.

A. Completing the practical exam in a safe manner so that the patient is not at risk for injury.

1. the instructor, the student must complete the exam in such a manner that the patient is not at risk for injury.
2. **At the instructor's discretion, a breach of safety or professional behavior** may result in automatic failure of the practical or check-off.

B. Achieving a grade of 80% or better

All lab practical examinations must be passed with at least 80% competency. Any score less than 80% will be considered failing. The student will have 2 additional opportunities to re-take the practical exam to earn a grade of 80% or better. Students may not re-take a practical exam on the same day on which they failed to demonstrate competency.

1. If an 80% grade is not attained, it is the student's responsibility to schedule an appointment with the instructor to take a make-up practical.
2. If the instructor determines that further remedial work is necessary, he/she will inform the student and schedule such work.
3. Grades for make-up practical exams will be based upon the number of trials required to earn above the 80% level, each successive attempt will reduce the grade book entry for the practical exam (as follows).

1st Re-take

- If a student scores **80% or higher**, the student has demonstrated competence and successfully passed the practical exam.
- The score entered into the instructor's grade book will be the higher of the initial score

earned by the student or 80% of the score earned on the re-take exam.

- If a student scores **less than 80%**, the student has not passed and needs to re-take the examination.

2nd Re-take

- If a student scores **80% or higher**, the student has passed and does not need to re-take.
- The score entered into the instructor's grade book will be the higher of the initial score earned by the student or 70% of the score earned on the re-take exam.
- If a student scores **less than 80%**, the student has not passed the practical exam and will be referred to the CASS.

A student who does not pass a practical exam in 3 attempts results in an automatic referral to the CASS, regardless of the overall grade in the course (**see CASS**).

Dress Code

Classroom Attire

Attire approved by the Program for the classroom and for research activities will be discussed at Orientation Day. Nails must be kept short and clean. No excessive perfume, or cologne is allowed. Students are expected to maintain a modest and respectful appearance in all classrooms, laboratories settings. At the discretion of the professor, students may be required to wear DPT approved scrubs or business casual attire in class (Khakis or dark slacks and WKU DPT dress polos). Walking barefoot is not allowed outside the classroom in the building unless it is for research or demonstration purposes. Students presenting to class dressed inappropriately will be dismissed from class and not allowed to return until properly dressed.

Lab Attire

Loose fitting shorts and t-shirts for the men and loose-fitting shorts and t-shirts over sports bras or tank tops for the women are the required dress for labs. Failure to have lab attire for labs may result in the student being dismissed from class and not allowed to return until properly attired in lab clothing.

Clinical Attire

Clinical education attire will follow that of the clinical site.

Classroom Breaks

Each hour of scheduled class will have a minimum of 5-minute break.

Cell Phone and Computer Use

Students are not allowed to use cell phones **during any class period**, including lecture and lab sessions unless specifically directed by the instructor for classroom purposes only; no text messaging, emailing or other cell phone functions are allowed. Cell phone use may be resumed when students are on breaks. Computer use is allowed in the classroom.

Classroom and Laboratory Housekeeping

No pets will be allowed in classrooms or labs. Students are expected to keep their immediate workspace clean. In addition, there may be clean up duty that will rotate weekly among the student body. Students may be allowed food during lectures **but not labs**, provided that they clean up appropriately.

General Clean up:

Cleaning up and maintenance of rooms dedicated for DPT Program use are the responsibilities of the students. At least once per day, students are responsible for cleaning the tables, putting away all equipment, and for scheduling laundry assignments. To ensure this takes place, a sign-up sheet that rotates student responsibilities will be posted in the room. Additionally, students are responsible for the following:

The following items are provided for student use and must be maintained by the students on a regular basis:

- Refrigerator (2)
- Microwave/toaster oven (4)
- Mailboxes
- Lockers

Hazardous Materials

Laboratories should always be maintained in the neatest possible order. Each student is responsible for cleaning his/her area and maintaining a safe work environment. **All spills must be clean immediately to prevent slips or falls.** Students must be diligent about the storage and use of hazardous materials and be appropriately informed of policies regarding storage or removal. This is especially true when working with cadavers.

Equipment Maintenance

All equipment within the Program is regularly maintained and calibrated according to the manufacturers' recommended guidelines. Malfunctioning equipment should be brought to the attention of a faculty member, who will then inform the Department Chair of the issue.

Student Responsibilities

Attention and active participation are required in all sessions. **Each student is expected to prepare for the lecture and lab session by reading the required materials prior to that session.** Any student having difficulty with material presented in this course should seek direction and/or assistance from the instructor or laboratory assistance from the instructor or laboratory assistants as soon as the difficulty is perceived. Each student is expected to act according to the guidelines of Professional Behaviors set forth in this Student Manual.

Faculty – Staff Information

Faculty

Instructors should be addressed by their preferred title (such as ‘Professor’ or ‘Doctor’) and their last name.

Office Hours

Each instructor with status as a full time University employee will hold a minimum of 4 *official office hours per week*. Office hours should be posted on the syllabus and the faculty shall be available to students, colleagues, and others during these times. Additional appointments should be scheduled as needed with the individual instructor. If an instructor is not able to hold office hours, he/she should notify the Program Office Associate/Coordinator and post a notice on their door when hours will be rescheduled.

Support Staff

Office Associates/Coordinators are not allowed to:

1. Give personal information concerning students.
2. Give students their grades.

In case of emergency, support staff may deliver a message to the student.

Additional Guidelines for Success in the DPT Program

Complying with Academic Rules and Regulations

All students are expected to comply with the academic rules and regulations of the University and of the Program. The following suggestions will help the student to be in compliance:

1. Complete the assigned readings and homework prior to class.
2. Be punctual in all class sessions.
3. Contact the faculty member, Department Chair, or Office Associate/Coordinator early in the morning if absence or tardiness is unavoidable.
4. Discuss absences with faculty members.
5. Ask for tutorial assistance as needed.
6. Participate fully in lectures, laboratory sessions, and discussions.

Employment

Due to the academically rigorous nature of this program and the extensive time required for academic, lab, and clinical requirements, the faculty **strongly recommends that students NOT seek outside employment, particularly during the first year of the curriculum.**

Consensual Relationships

WKU’s mission is to promote the personal and academic development of students. This mission is promoted by professionalism in relationships between members of the university community. It is the University’s goal to create an environment conducive to learning where students, faculty, and staff trust and respect one another.

Dating and sexual relations between students and faculty members with whom they also have an academic, advisory, supervisory, or evaluative relationship are fraught with the potential for exploitation, and therefore are expressly prohibited. The respect and trust accorded to a professor by a student as well as the power exercised by the professor in an academic or evaluative role, make voluntary consent by the student suspect. Further, these relationships might be less consensual than the individual whose position confers power or authority believes. Even when both parties initially have consented, the power differential between faculty and student may make it difficult for the student to end a relationship for fear of retribution. The development of a dating and/or sexual relationship renders both the faculty member and the institution vulnerable to possible alter allegations of sexual misconduct (e.g., sexual harassment, sexual assault) due to the significant power differential that exists between faculty members and students. Pre-existing relationships (e.g., marital or Other Qualified Dependents) as defined by HR policy 4.23V are subject to the reporting requirements in Section III and may present a conflict of interest.

This policy should not be construed to supersede any existing, applicable federal or state statutes. The University's policy on Consensual Relations between Faculty and Students can be found on the Academic Affairs policy site: <https://www.wku.edu/policies/docs/index.php?policy=360>.

Copyright and Fair Use Laws

The faculty of the WKU DPT Program requires all students in the DPT program to familiarize themselves with, and to follow, copyright and fair use requirements. **You are individually and solely responsible for violations of copyright and fair use laws. The University will neither protect nor defend you nor assume any responsibility for student violations of fair use laws.** Violations of copyright laws could subject you to federal and state civil penalties and criminal liability as well as disciplinary action under university policies. To help familiarize yourself with copyright and fair use policies, you are encouraged to visit a copyright web page at <http://www.copyright.gov/>.

Responsible Use of Social Media

Social Media Policy

The purpose of the social media Policy is to provide guidelines for the responsible use of social media resources. These resources include, but are not limited to, software applications and websites such as Zoom, Google Meet, Tumblr, WhatsApp, Reddit, Tik Tok, Snapchat, Instagram, Facebook, YouTube, X (formerly Twitter), Flickr, Blogs, Wikis, Myspace, and LinkedIn. This policy applies to all WKU DPT students, faculty, and staff who use social media in either a professional or a personal capacity.

WKU encourages the use of social media by university offices, faculty, and students to enhance our local, national, and global reach and our connection with students, parents, alumni, donors, and other key constituencies. When used responsibly, social media sites provide an effective way to promote WKU and to share information and perspective across a broad range of topics.

Guidelines for the Responsible Use of Social Media

When using social media sites, students, faculty, and staff should:

- Maintain clear lines between professional and personal social media activities.
- Avoid using the university's name to promote or endorse any product, cause, religious view, political party, candidate, etc.
- Avoid using the University's name in connection with comments, photos, videos, or images that could be interpreted or perceived as slurs, demeaning, inflammatory, illegal, unduly suggestive, sexual innuendo, inappropriate or otherwise contrary to the University's Mission.
- Remember that libel laws are in effect even when your social media accounts are set to "private."
- Refrain from posting content such as images or medical records that represent a breach of confidentiality.
- Maintain appropriate boundaries (for example, health professionals should not "friend" patients on their personal sites.
- Be advised that personal information can be used to perpetrate identity theft which can compromise the security of students, employees, and the institution.
- When in doubt, do not post.
- Protect confidential information and relationships. Do not post confidential, proprietary, or controversial information about the university, its students, faculty, staff, or alumni.
- Respect copyright and fair use laws by obtaining proper permissions and giving appropriate credit for work.
- Follow university policies and federal regulations, such as FERPA, HIPAA, and PHI
- Use official WKU logos only as specified in the university style guide.
- Consider the public nature and longevity of comments before posting.

Discipline for Violations

Any use of social media that threatens the safety of WKU constituencies, exhibits a lack of moral character, and /or is unlawful or a violation of university policy, may result in disciplinary action, up to and including termination or being asked to leave the institution. The University investigates and responds to all reported concerns about social media use or content. Please be aware that you may be held responsible for any personal legal liability imposed for any published content.

Confidentiality

An important part of ethics in physical therapy is maintaining the student's and/or client confidentiality. Written work submitted to the instructor must never contain the client's full name. Refrain from using client names in environments where confidentiality might be easily breached, particularly when discussing a client's case with family or friends in an open forum, hallways, elevators, and the like. Student records are kept secure and in confidence in the Program office with access to these records being available only to the appropriate University officials. If the Program ascertains that the student's/client's confidentiality has been violated, the student/faculty member violating the confidence will be subject to disciplinary action.

Criminal Background Check and Recreational Drug Screen

The WKU DPT Program uses an independent, third-party company, Verified Credentials Incorporated (VCI) to manage all background and drug screening at various points during the program. Students may be required to pay for initial and all subsequent screenings.

Students are required to obtain a background check prior to matriculation into the program. Instructions regarding this process will be sent to all incoming students upon acceptance into the Program. Once the process is completed by students through VCI, an appointed representative from the WKU DPT program will monitor for any discrepancies.

Students are required to repeat background checks through VCI on an annual basis to fulfill clinical education requirements. In addition, students are required to complete a drug screen prior to their first clinical experience and again one year later. Information will be provided to students at the appointed times, and results will be reviewed by the DCE and ADCE. Discrepancies and positive findings on drug and background screenings may impact the student's ability to obtain licensure, depending on the state. Notification of the discrepancy to the clinical sites will be completed by the

student under the direction of the DCE/ADCE. If a student is unable to secure an affiliation in a specific setting due to their background check and drug screen, the student may not be able to complete requirements for the DPT Program and, therefore, may be dismissed from the Program.

Additional drug screening may be required by individual clinical sites. In this case, the program will work with the site to obtain the additional testing through VCI at the student's expense, or the clinic may send the student to a designated lab for testing. A positive drug test during a clinical rotation will result in failure of that rotation and dismissal from the Program. See the WKU DPT Clinical Education Manual for further details regarding drug and background screening procedures for clinical education purposes.

A DUI, or other finding on a background screening, could negatively impact a student's ability to complete the Program requirements and if committed during a clinical rotation will result in dismissal from the Program. It may also affect the student's ability to achieve licensure in certain states. It is the student's responsibility to contact the licensing board in the state(s) in which he/she plans to apply for licensure to determine the potential impact a DUI or other finding on a background screening may have on the licensure process.

Graduate Assistantships

Graduate assistantship awards are currently available within the WKU DPT program and students will be notified when these are available.

Rights, Privileges, and Safety of Individuals

The rights and safety of individuals involved in any aspect of the WKU DPT Program are protected by an appeals process. If a student wishes to file an appeal or a grievance pertaining to his/her

graduate education, WKU Graduate School procedural steps are outlined in the Grievance Section of the DPT Policies and Procedures Manual.

To ensure that all students of the academic community of WKU have access to opportunities for growth and learning, this policy is intended as a safeguard for that freedom. To ensure that this freedom is not betrayed, safeguards are incorporated that protect its performance and create a responsible attitude in the minds of the students enjoying this freedom.

Article I. Classroom Freedom

Section 1. Protection of Freedom of Expression

Students should be free to take reasoned exceptions to the data or view offered in any course of study.

Section 2. Protection against Improper Academic Evaluation

Students are responsible for maintaining standards of academic performance established for courses in which they are enrolled. At the same time, they should have protection against prejudice or capricious academic evaluation.

Article II Student Records:

https://www.wku.edu/registrar/ferpa/ferpa_students.php

Section 1. Maintenance of Records

To minimize the risk of improper disclosure of student records, academic and disciplinary records shall be kept separate. Transcripts of academic records shall contain only information about academic areas.

Section 2. Access to Student Records

Information from disciplinary or counseling files shall not be available to unauthorized persons without the express consent of the student involved except under legal compulsion or in cases where the safety of persons or property is involved.

Safety

In addition to observance of the University regulations on classroom conduct and the statement of Academic Dishonesty, students in the WKU DPT Program must act in a safe and professional manner. Unsafe or unprofessional behavior or practice –in either a classroom or clinical setting –may lead to probation or dismissal from the WKU DPT Program, regardless of previous academic or clinical performance. Examples of unsafe or unprofessional behavior include, but are not limited to the following:

- Inadequate preparation for safe patient care.
- Failure to seek appropriate assistance with new or unfamiliar procedures.
- Dishonest or unprofessional interactions with patients, families, staff, faculty, or peers.
- Engaging in practice when not mentally or physically fit.
- And/or placing or leaving a patient in a hazardous condition or circumstance.
- And/or any breach of WKU DPT Program policy or procedure.

Volunteer Participants in the Classroom

It is desirable to have community individuals and patients participate in the teaching and learning activities in the Program. Whenever an individual is recruited to participate in a patient demonstration and/or to participate in a research study, the decision to agree to participate must be voluntary. The participant must sign a Volunteer Services Agreement to participate. The Volunteer Service Agreement asserts that the participant in a classroom demonstration may decline participation at any point during the session. WKU IRB informed consent documents are used for research purposes.

DPT students also serve as volunteer participants in the classroom. Physical Therapy is a hands-on profession that requires manual skills. These skills are applied to the human body. In order for you as a physical therapy student to learn the skills, you will need to practice these skills on your fellow students. Also, at times, it will be necessary for the program faculty to demonstrate certain skills on the students. These activities are a necessary and important part of your education. Your permission to carry out these activities is obtained through the Student Demonstration Informed Consent document. It is your responsibility to disclose any medical or preexisting condition that may preclude you from taking part in a demonstration.

Grievance – Procedural Steps

Filing a Complaint about a DPT Program Faculty Member

The WKU Student Compliant Procedure for resolving a complaint concerning a faculty member is outlined below in four steps (<https://www.wku.edu/handbook/academic-complaint.php>):

1. Step 1 (Faculty Member): The first step is for the student to discuss the complaint with the faculty member involved. If the complaint involves a grade, the student must take the complaint to the faculty member within the first two weeks of the first semester (fall; spring) following the assignment of the grade.
2. Step 2 (Department Level): If the student and faculty member are unable to resolve the complaint, the student may take the complaint to the faculty member's Department Chair. Written notification of the complaint must be given to the Department Chair within two weeks after meeting with the faculty member (Step 1),
3. Step 3 (College Level): Should the student be unable to receive the satisfaction desired at the department level, the complaint may be taken to the college level. Written notification of the complaint must be submitted to the college dean or his/her designated representative within two weeks after the conference with the Department Chair (Step 2).
4. Step 4 (University Level): Should the student or faculty member desire to appeal the decision of the College Complaint Committee, a formal written notice of appeal may be submitted to the University Complain Committee chair, with a copy of the Provost/Vice President for Academic Affairs within two weeks of the decision of the College Complaint Committee.

Filing a Complaint about the DPT Program to CAPTE

Physical therapy education programs in the United States are accredited by the Commission on Accreditation in Physical Therapy Education (CAPTE), which works in conjunction with the American Physical Therapy Association (APTA) to maintain the standards of the profession. Students, parents, patients, faculty, and other stakeholders may lodge a complaint regarding the DPT Program to the APTA to report a wrongdoing or a concern that directly involves student rights and privileges, patient/client rights, and privileges, and public safety. To obtain the materials needed to submit a complaint, contact the APTA Accreditation Department at 703-706-3245 or e-mail accreditation@apta.org. Additional information about the complaint process is provided on the website at <http://www.capteonline.org/Complaints/>.

For Complaints that Fall Outside of Normal Mechanisms

Procedural steps for handling complaints about the Program, if a complaint falls outside the realm of the due process (for constituents external to the University such as patients, clinical education sites, employers of graduates, program applicants, and the public) are outlined below in six steps:

1. Comments related to the Program should first be addressed to the DPT Department Chair/Director
2. Comments that are not satisfactorily managed by the Department Chair/Director or are specifically regarding the Department Chair/Director should then be submitted to the Academic Dean at the following address:
Dean, College of Health and Human Services
Western Kentucky University
1906 College Heights Blvd #11038
Bowling Green, KY 42101-1038
Email: tania.basta@wku.edu
3. Comments related directly to the performance of the Dean, Vice President of Academic Affairs or Executive Vice President should be addressed to:
President
Western Kentucky University
1906 College Heights Blvd #11001
Bowling Green, KY 42101-1001
Email: timothy.caboni@wku.edu
4. Comments related directly to the performance of the President or concerning University Business not related to Accreditation should be addressed to:
Chair, Board of Regents
Western Kentucky University
1906 College Heights Blvd #11001
Bowling Green, KY 42101-1001
Email: wkubor@wku.edu
5. Comments that are not satisfactorily addressed by the office of the President that are related to Regional Accreditation should be made in writing, with an original signature, and

addressed to:

President
Southern Association of College and Schools Commission Colleges
(SACS)
1866 Southern Lane
Decatur, GA 30033-4097

6. Comments that are not satisfactorily addressed by the office of the President related to program accreditation by the Commission on Accreditation in Physical Therapy Education (CAPTE) should be addressed to:

Commission on Accreditation in Physical Therapy
Education American Physical Therapy Association
3030 Potomac Ave, Suite 100
Alexandria, VA 22314
703-706-3245
Email: accreditation@apta.org

Equal Opportunity and Non-Discrimination

Western Kentucky University (WKU) is committed to a policy and practice of providing equal educational and employment opportunities to all individuals. In accordance with Title VI and VII of the Civil Rights Act of 1964, Title IX of the Educational Amendments of 1972, Section 504 of the Rehabilitation Act of 1973, Revised 1992, and the American with Disabilities Act of 1990, no form of discrimination or harassment will be tolerated at WKU on the basis of race, color, ethnicity, national origin, creed, religion, political belief, sex, sexual orientation, gender identity/expression, marital status, age, uniformed services, veteran status, genetic information, pregnancy, childbirth or related medical conditions, or physical or mental disability in admission to career and technical education programs and/or activities, or employment practices. In addition, WKU will not conduct business with any vendor who exhibits discriminatory and/or harassing behavior(s).

Title IX resources for students can be accessed via this link:

<https://www.wku.edu/institutionalequity/studentnewsletter2024.pdf>

The University is also required to investigate complaints of sex and gender-based discrimination. All sex and gender-based discrimination and harassment allegations can be reported to Ms. Ena Demir (Title IX Coordinator), via email at ena.demir@wku.edu or by phone at (270)745-6867. Allegations regarding student-to-student misconduct can be reported to Mr. Michael Crowe (office of Student Conduct Director and Title IX Investigator), via email at Michael.crowe@wku.edu or by phone at (270)745-5429. ADA issues can be reported to Chantel Gillenwater via email at chantel.gillenwater@wku.edu or by phone at (270)745-5462. Additional information EEO and Title IX is available at the Office of Institutional Equity (OIE) <https://www.wku.edu/institutionalequity/>.

WKU Ancillary Services Available to DPT Students

Information Technology Services and Technical Support

Information Technology Services (ITS) provides a wide range of information technology for instruction and is in Jody Richards Hall. The ITS department provides service for WKU faculty, staff, and students such as student technology centers; Blackboard, technology training, software, and media services; Technology Resource Center; support for departmental labs and classrooms; and technology support consultants <https://www.wku.edu/its/>. The ITS Service Desk serves as the initial point of contact for technology support and provides the first level of response for technology-related problems and questions. The service desk can be reached in a variety of ways listed on the website: <https://www.wku.edu/its/services/students.php> including by phone at (270)745-7000.

Student Financial Assistance

For general information regarding loans, grants, and scholarships contact Student Financial Assistance located in Potter Hall Room 317 or online at <https://www.wku.edu/financialaid/>. The Student Financial Assistance office can be reach by phone at (270)745-2755.

Health Services

WKU Health Services are provided by Medical Center Health at WKU. Students may schedule routine medical appointments, including for mental and emotional health concerns, or participate in health education programs. Health insurance is offered to all students, both undergraduate and graduate, through the Student Health Insurance Plan and may be purchased from WKU Health Services. All students must have verification of health and liability insurance prior to starting their clinical rotations. See website for additional information: <https://www.wku.edu/healthservices/>.

Laboratories

Equipment, classrooms, and laboratories will be available to physical therapy students only and those individuals involved in research or patients participating as part of a course. Access outside of scheduled class time (weekend, holidays, before 7:30 and after 4:30 pm Monday – Friday) is provided to students for practice of clinical skills, studying and/or research purposes. When accessing the MCHC building and/or DPT facilities outside of scheduled class time, students are to be in groups of 2 or more to maximize student safety and security. Family members and friends are not allowed in the laboratories unless given permission by a faculty member. Violation of this code may result in probation or dismissal from the Program.

Libraries

All University library services are available to registered students. These services include both in-person and electronic access to materials and resources. A detailed listing of the specific services provided are on the WKU Libraries website at <https://www.wku.edu/library/>.

Lockers

Individual lockers will be assigned to all students. These should be used for storage of books and all

accessory items.

Parking

Students who register a vehicle should refer to WKU Student Handbook for vehicle regulations and assessments. Parking rules and regulations are distributed at the time of parking permit purchase for main campus parking. Contact Parking and Transportation Services at (270)745-2361 or visit the website for additional information: <https://www.wku.edu/transportation/>. Permits will also be necessary for parking at the Medical Center Health Complex (MCHC).

Campus Safety (Security)

The WKU Police Department provides police service to the university 24 hours a day, 365 days per year. The office is located on the bottom floor of Parking Structure 1 facing Diddle Arena. The phone number for non-emergencies is (270)745-2548. Call 911 for emergency situations. For additional information, the website it accessed at <https://www.wku.edu/emergency/>.

Student Accessibility Resource Center (SARC)

In compliance with university policy, students with disabilities who require academic and/or auxiliary accommodations for a course must contact the Student Accessibility Resource Center located in Downing Student Union, Room 1074. The SARC can be reached by phone at (270)745-5004 or (270)745-3030 TTY) or via email at sarc.connect@wku.edu. Please do not request accommodations directly or instructor without a faculty notification letter (FNL) from the Student Accessibility Resource Center. Additional information can be found on the website: <https://www.wku.edu/sarc/>.

Student Support Services

Personal counseling services are offered to students through the Office of Student Support Services (SSS). Counselors help students with transition issues, aid in setting realistic goals, and consult on personal issues. Additionally, academic advising, tutoring, peer intrusive advisors, financial literacy education, assistance with FAFSA, and graduation plan services are provided through the SSS. Information can be found on the website at <https://www.wku.edu/ss> or in person at Jones Jagers Hall, Room 132 on the Main Campus.

Title IX Misconduct/Assault Statement

Western Kentucky University (WKU) is committed to supporting faculty, staff, and students by upholding WKU's Title IX Sexual Misconduct/Assault Policy (#0.2070) and Discrimination and Harassment Policy (#0.2040). Under these policies, discrimination, harassment and/or sexual misconduct based on sex/gender are prohibited. If you experience an incident of sex/gender-based discrimination, harassment, and/or sexual misconduct, you are encouraged to report it to the Title IX Coordinator, Ms. Ena Demir (Title IX Coordinator), via email at ena.demir@wku.edu or by phone at (270)745-6867, or to Title IX Investigator Michael Crow by email Michael.crowe@wku.edu or by phone at (270)745-5429. You may also use the reporting form https://cm.maxient.com/reportingform.php?WesternKentuckyUniv&layout_id=95.

Please note that while you may report an incident of sex/gender-based discrimination,

harassment, and/or sexual misconduct to a faculty member, WKU faculty are “Responsible Employees” of the University and MUST report what you share to WKU’s Title IX Coordinator or Title IX Investigator.

If you would like to speak with someone who may be able to afford you confidentiality, you may contact WKU’s Counseling and Testing Center at (270)745-3159.

WKU Writing Center

One-on-one or small group assistance with writing is available free of charge to WKU students at the Writing Center, located in Cherry Hall Room 123. Although walk-in consultations are sometimes available, students with appointments will receive priority assistance. Appointments may be made online, in-person, or by calling (270)745-5719. More information can be found at <https://www.wku.edu/writingcenter/>.

The Writing Center also offers online consultations for student’s who live at a distance or who cannot visit during our operating hours. Writing tutors have been trained to provide helpful feedback to students at all phases of a writing project: they can help you brainstorm ideas, structure your essay, clarify your purpose, strengthen your support, and edit for clarity and correctness. But they will not revise or edit the paper for you. See instructions at the website <https://www.wku.edu/writingcenter/> for making online or face-to-face appointments or call (270)745-5719 during our operating hours (also listed on our website) for help scheduling an appointment.

Emergency Procedures

If an emergency arises, call 911 or Med Center Security (270)745-1350. Notify the DPT Department Chair (270)745-3188, Office Coordinator (270)745-3234 or other DPT faculty/staff as soon as possible. The following are emergency telephone numbers for policy, fire, and rescue:

- Medical Center Security - (270)745-1350
- Campus Safety - WKU Police – non-emergency - (270)745-2548
- Campus Safety – Emergency – 911

WKU Medical Emergency Procedures for students/employee/visitor are available at:

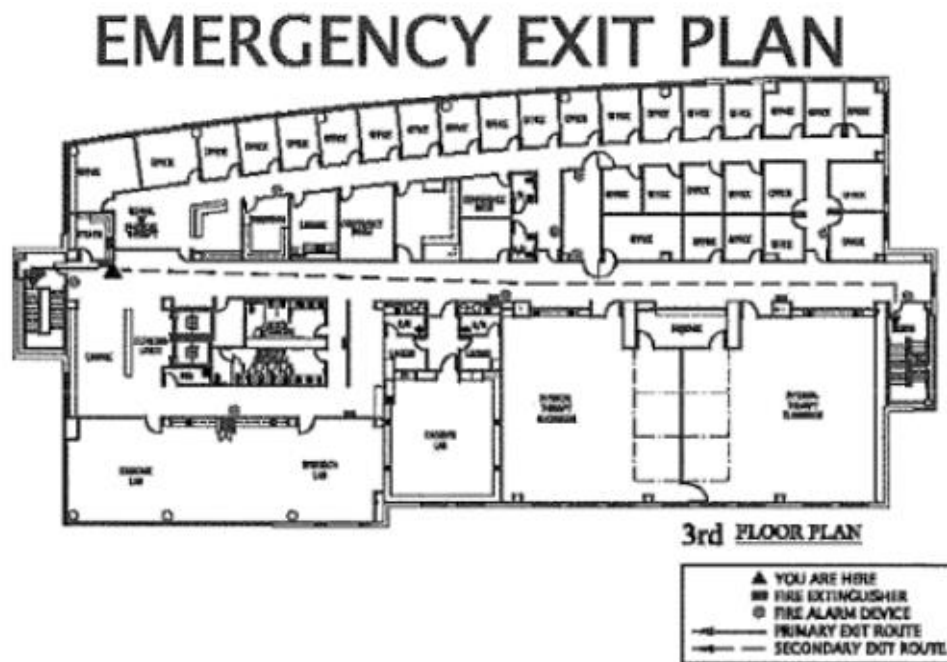
https://www.wku.edu/emergency/documents/med_emergency.php.

Evacuation of Research Subjects or Patients

In the event of a fire alarm or disaster alarm, all faculty members and students are to check the MCHC DPT classrooms as they prepare to evacuate the building. They are to make certain no subjects or patients are in these rooms. If a subject or patient is present, faculty members and students must assist in the evacuation of these individuals. The elevator on the 3rd floor will not be available. As a result, faculty members and students may have to do a fire carry of the individual to facilitate his/her transport to a safer environment. This might mean that 2 to 4 faculty members and students would take a “chair” by interlocking their upper extremities to physically carry the

individual down the nearest available stairwell. In the event that the faculty members and students determine that they could not safely physically form a “chair” to carry the individual, they should obtain two full sheets from the classroom, lay the individual on the sheets (two for double thickness and increased safety), and then carry the individual down the stairwell to the outside in this manner. Other faculty members and students should carry the individual’s wheelchair (or another assistive device) down the stairwell to the outside to be available for the subject or patient.

Evacuation Plan for MCHC 3rd Floor



**IN CASE OF FIRE USE STAIRS FOR EXIT
DO NOT USE ELEVATORS**

Evacuation - for a fire alarm or similar type event everyone should gather in the parking lot directly in front of the building near the emergency pole by the silver dome. A floor leader will coordinate this effort and account for personnel.

Evacuation Routes – These are posted in all the main corridors, which identify both primary and secondary means of egress, along with the fire extinguisher locations.

Fire Drill – Security will be conducting a fire drill annually, which usually occurs in May or June.

Sheltering – for events like a tornado we would expect the 3rd floor to proceed down to the 2nd floor or the 1st floor.

1st Floor – If you are on the 1st floor move to the center hallway near the bathrooms and we will identify a staging area with a set of arrows on the wall for staff to gather between. This should keep you furthest from areas where glass could break etc.

2nd Floor – Gather in the office corridor where all the office doors are, not in the main public corridor. Staff should exit their offices, close their doors and shelter in that hallway.

Tornado Drill – We will participate in the Statewide Tornado Drill which occurs on the first Tuesday in March.



DPT Student Responsibility for Manual Information

Each student is responsible for being familiar with the information contained in this Student Manual. Failure to read the information will not be considered an acceptable excuse for non-compliance. All students must read and sign the "Acknowledgement of Receipt" section found below. This form must be returned to the DPT Program Office Coordinator prior to the end of the first week. By signing this form, you are declaring that you have read and have been informed of the contents of the Student Manual. The WKU DPT Program reserves the right to change policies or revise curricula, as necessary.

Waiver of Regulations

Rules and regulations in this manual have been adopted by the faculty and administration. When a student finds that extenuating circumstances might justify the waiver of a particular regulation, the student may petition the Department Chair.

Purpose

The Student Policies and Procedures Manual has been developed to serve as a guide for new students. We hope that this Manual will provide practical information that will facilitate the orientation process and help the newly entering student to become familiar with the student learning outcomes and the procedures of the WKU DPT Program.

Acknowledgement of Receipt

I have received my copy of the Western Kentucky University (WKU) Doctor of Physical Therapy (DPT) Program Student Manual (either hardcopy or email). I understand and agree that it is my responsibility to familiarize myself with its contents and to act according to the guidelines set forth therein.

Student Name (Print)

Student Signature

Date

DPT Program Academic Dishonesty Policy

Academic integrity and ethical behavior are cornerstones of a high-quality educational environment and the DPT Program fully embraces the University policy of accepting no form of academic dishonesty. In accordance with this policy, the Program has adopted a “zero tolerance policy” for any acts of cheating, plagiarism, or other forms of academic dishonesty/misconduct. Under this policy, any student suspected of committing such an act will be brought before the CASS. If the student is found to be guilty of an act that violates the academic standards of performance, a grade of “F” may be given to that portion of the coursework in which the act is detected or given for the course in which the act was discovered. If a grade of “F” is given for the course, then the Department Chair will recommend to the Dean of the Graduate School that the student be subsequently dismissed from the Program.

All faculty members are required to identify any suspected acts of academic dishonesty to the Department Chair and are responsible for the enforcement of the above policy. The disciplinary system described does not distinguish based on the type of act nor the type of assignment in which such act occurred. Any act that violates our academic standards, no matter how large or small, will receive the above stated disciplinary action. For this reason, it is critical that every student have a clear understanding of what is considered academic misconduct. Attached is a list of examples of academic dishonesty. Although this list is not all-inclusive, it provides additional guidance to students and identifies several major categories of academic misconduct. This list should be reviewed by all students. Any student that is not clear as to any aspect of our academic standards should discuss this with their professor prior to the completion of any assignment or examination.

In order to ensure that every student understands the Academic Dishonesty Policy, each student must sign the statement below and return it to the Program Office prior to the onset of the Program.

STUDENT STATEMENT: I have read the above statement and understand the DPT Program Policy on Academic Dishonesty. I understand that it is my responsibility to comply with the academic standards of the Program and that any act of academic dishonesty/misconduct will result in the disciplinary action described above.

Student Name (Print)

Student Signature

Date



Student Professionalism Concern Report Form

Student: _____

Professor: _____

Which of the following unprofessional behaviors has the student exhibited? Check all that apply.

Professional Responsibilities

- Fails to accept and internalize criticism and feedback.
- Has inappropriate demeanor or appearance in the classroom.

Professional Relationships

- Acts disrespectfully toward others.
- Engages in disruptive behavior in class.

Professional Ethics

- Behaves in a dishonest manner, including falsifying documentation.
- Other:

1. Describe in detail the incident which prompted the completion of this form (attach additional pages if needed).

2. Describe previous feedback and remediation which took place prior to completion of this form (attach additional pages if needed).

I acknowledge that I have reviewed this evaluation with the course professor and have the following additional comments.

Student Signature

I acknowledge that I have reviewed this form.

Student Signature

Date



DPT Program Disclosure

The purpose of this document is to review certain facts described during the admissions process to prevent any misunderstanding by WKU applicants and students. Read the following information regarding your education process and **initial each section** to indicate your understanding and agreement of each item. When you have finished the entire form, sign your name, and return this form to the Office Coordinator as part of your DPT student folder.

Housing and Employment While Attending WKU: Although employment from local businesses and housing in the immediate area of the University may be available, the University has not guaranteed me employment or housing. Because of the demands of full-time professional education, and the DPT Program specifically, it is recommended that students do not plan to work full-time during the didactic portion of the Program, and not at all during clinical affiliations.

Initial: _____

Financial Assistance: As with any university, student loans and/or grants are made available depending upon the financial information provided by the applicant. The university has not guaranteed that I will receive a loan or a grant. If I receive a loan from any institution, I understand that I will be responsible for repaying the loan.

Initial: _____

University and Student Handbooks/Manuals: I understand that the University and Student Handbooks have terms and conditions regarding my education and that these are available through the [HTTP://www.wku.edu/physicaltherapy/](http://www.wku.edu/physicaltherapy/) website; before beginning class, I will read that handbooks and agree to abide by their contents.

Initial: _____

Attendance: The University requires daily attendance as an important part of my training program. Students failing to maintain satisfactory attendance requirements for their courses are subject to administrative actions, which may include probation, dismissal from school, or denial of graduation. The attendance policy is contained in the DPT Student Manual.

Initial: _____

Criminal Background Check and Drug Testing: I am aware that I will be required to undergo a criminal background check and drug screening prior to being allowed to participate in clinical rotations. I understand that a record of criminal behavior may preclude me from being able to participate in clinical education at most, if not all, facilities and may prevent me from being employed. I understand that should I be prohibited from attending a clinical rotation at a clinical facility due to findings on my drug screening or criminal background check, I may be dismissed from the Program.

Initial: _____

Clinical Education Requirements: Clinical rotations and internships are an integral part of the curriculum and may require that a student temporarily relocate. I understand that I may, and most likely will, must leave the local area, or the state, for any or all clinical affiliations. I am aware that I am responsible for the cost of the travel and other related expenses. Students will be required to meet all requirements outlined in the Clinical Education Manual on "Immunizations, Certifications, and Related Requirements: by the conclusion of their second semester. Failure to comply with these requirements can lead to dismissal from the Program. I understand that I will receive the Clinical education Manual during a scheduled session in week 1 of semester 1 and I will read the Manual and agree to abide by its contents. This information is available on the website.

Initial: _____

Core Performance Standards: Core Performance Standards are divided into 2 parts: Technical Standards and Professional Behaviors. I must review the Technical Standards required for the Program and, by signing this document, I attest that I meet the Technical Standards. Students will be introduced to Professional Behaviors in the first semester. The Core Performance Standards are available for review in the Student Manual.

Initial: _____



Accreditation and Registration Statements

Commission on Accreditation in Physical Education (CAPTE)

Graduation from a physical therapist education program accredited by the Commission on Accreditation in Physical Therapy Education (CAPTE), 3030 Potomac Ave, Suite 100, Alexandria, VA 22314; phone; (703)706-3245; accreditation@apta.org is necessary for eligibility to sit for the licensure examination, which is required in all states.

The Doctor of Physical Therapy Program at Western Kentucky University is accredited by the Commission on Accreditation in Physical Therapy Education (CAPTE), 3030 Potomac Ave, Suite 100, Alexandria, VA 22305-3085; phone (703)706-3245; email accreditation@apta.org; website: <http://www.capteonline.org>. To contact the APTA Commission on Accreditation in Physical Therapy Education call (703)706-3241 (Mary Romanello, Director, Accreditation; email maryromanello@apta.org) or (703) 706-3247 (Doreen Stiskal, Manager, PT Programs; email doreenstiskal@apta.org).

Southern Association of Colleges & Schools, Commission on Colleges (SACS)

Western Kentucky University has received approval from SACS to offer the Doctor of Physical Therapy Program.

DPT Program Disclosures Required by the State of Kentucky

1. The Doctor of Physical Therapy Program at Western Kentucky University is accredited by the Commission on Accreditation in Physical Therapy Education (CAPTE), 3030 Potomac Ave, Suite 100, Alexandria, VA 22314; phone (703)706-3245; email accreditation@apta.org; website <http://www.capteonline.org>.
2. The University has received approval from the regional accrediting body (SACS) recognized by the United States Department of Education.

Initial: _____

By submitting this form, I agree to abide by the admission requirements of the DPT Program. By signing my name in the space below, I verify that I have read, fully understand, and agree with the statements contained in this disclosure form.

Student Signature: _____ Date: _____



DPT Student Assumption of Risk / Release of Liability Form

I, _____, understand and agree that the demonstration and practice of clinical skills sponsored by the DPT Program involves certain risks and that regardless of the precautions taken by the Department of Physical Therapy, some bodily injuries may occur.

Specific risks/hazards involved in **demonstration and practice of clinical skills** (manual skills, equipment use, and biohazardous materials) include but are not limited to the following:

1. Pain, soreness, or fatigue of muscles, joints, bones, and associated connective tissues.
2. Sprain/strain of the spine, vertebral discs, and associated muscles, joints, and connective tissues.

Knowing this information, inconsideration of my participation in the demonstration and practice of clinical skills sponsored by the DPT Program, I **expressly** and **knowingly release** the Board of Regents of the University, Western Kentucky University (WKU) and the DPT Program, and the Commonwealth of Kentucky their officers, agents, volunteers, and employees, from any and all claims and causes of action for property damage, personal injury or death sustained by me arising out of any travel or activity conducted by or under the auspices of the DPT Program caused by **risks associated by this activity** and/or the **negligence of the sponsoring group**.

In addition, I understand and agree that the DPT Program cannot be expected to control all the risks articulated in the form but may need to respond to accidents and potential emergency situations. Therefore, I hereby give my consent for any medical treatment that may be required during my participation with the understanding that the cost of any such treatment will be my responsibility. **WKU does not carry medical or accident insurance** for the activities mentioned unless the participants are informed otherwise. As such, participants should review their personal insurance portfolio.

Finally, I **voluntarily** and **knowingly** agree to **protect, hold harmless, and indemnify** the Board of Regents of the University on behalf of WKU and the DPT Program, and the State of Kentucky, their officers, agents, volunteers, and employees, against all claims, demands, or causes of action for property damage, personal injury, or death, including defense costs and attorney's fees arising out of my participation in the demonstration and practice of clinical skills sponsored by the DPT Program.

I have read the agreement and have willingly signed for the consideration expressed and with a full understanding of its purpose. The student represents that he/she is competent to legally execute this agreement.

Print Name _____ 800# _____

Date of Birth _____ Phone # _____

Local Address: _____

Email Address: _____

Participant Signature: _____ Date: _____



WKU

**DOCTOR OF
PHYSICAL THERAPY**

Emergency Contact Information

Person to Notify in Case of Emergency

Your Name: _____ Date of Birth: _____

Emergency Contact Name: _____

Phone #: _____

Address: _____

City: _____ State: _____ Zip Code: _____

It is the student's responsibility to report any medical conditions and/or allergies that may limit their participation in classroom activities to the Professor of record:

One copy should remain on campus in a designated location that can be accessed in case of emergency and one copy should accompany the faculty/staff advisor for the trip or activity.



Student Demonstration Informed Consent

Physical Therapy is a hands-on profession that requires manual skills. These skills are applied to the human body. In order for you as a student physical therapist to learn the skills, you will need to practice these skills with your fellow students. Also, at times, it will be necessary for the program faculty to demonstrate certain skills on the students. These activities are a necessary and important part of your education. For your protection we are asking your permission to carry out these activities. It is your responsibility to disclose any medical or pre-existing condition that may preclude you from taking part in a demonstration.

I give my permission for my student colleagues to perform physical therapy related skills on me and I give my permission for the program faculty to perform physical therapy related skills and demonstrate examination and intervention techniques on me. I understand it is my responsibility to disclose any current or pre-existing condition that may interfere with the demonstration or bring harm to me. I understand that the program faculty member must inform me of the nature of the demonstration prior to the activity. I also understand that I may decline at any point to take part in a demonstration by a program faculty member without a penalty in my course grade. I understand that, although this activity is part of a course, any information disclosed, and the outcome of any examination remains confidential.

I give my permission for a member of the WKU DPT Program faculty to perform a physical therapy examination and/or physical therapy intervention and/or clinical demonstration. I understand that this is for an educational purpose and the students will be present. I also give my permission for (a) student(s) of the WKU DPT Program to perform a physical therapy examination and/or physical therapy intervention and /or clinical demonstration under the direct supervision of a program faculty member. I understand that I have the responsibility to disclose any current or pre-existing condition(s) that may interfere with the demonstration or that may bring harm to myself. I understand that the program faculty member must inform me of the nature of the demonstration prior to my participation. I also understand that I may decline at any point to take part in the demonstration. I understand that clinical demonstration is not to be physically or psychologically detrimental. I understand that, although this activity is part of a course, any information disclosed, and the outcome of any examination remains confidential.

Print Name: _____

Signature: _____ Date: _____



Video / Photograph Consent Form

I give permission to the WKU DPT Program at Western Kentucky University to video and to photograph me and use the video(s) / photograph(s) of me for program, social media, and recruitment purposes.

Print Consenter's Name: _____

Consenter's Signature: _____

Witness Signature: _____ Date: _____



Photo Consent Form

I give my consent to the WKU DPT Program at Western Kentucky University to take my photograph for the purpose of identification. I understand that my photograph will be distributed only to Department faculty and staff and will not be used for any other purpose.

Print Consenter's Name: _____

Consenter's Signature: _____

Witness Signature: _____ Date: _____



Doctor of Physical Therapy Program – Student Appeal Form

Purpose: This form allows a student who have been dismissed from the DPT Program to formally request reinstatement. The purpose is to provide the student with an opportunity to explain the circumstances contributing to their dismissal, reflect on barriers to success, and outline a concrete plan for improvement should reinstatement be granted.

Section 1: Student Information

Name: _____

Student ID: _____

Date of Appeal Submission: _____

Current Year in Program: Year 1 Year 2 Year 3

Reason for Dismissal (check all that apply):

Academic Performance

Clinical Performance

Professional Behavior

Other: _____

Section 2: Student Rationale, Reflection on Barriers and Study Plan

Please provide a clear and concise explanation of the circumstances that led to your dismissal. Include any extenuating personal, academic, or health-related factors. Additionally, please reflect on the barriers that may have prevented you from being successful in the DPT program and list specific, measurable and realistic actions you will take to overcome them or address them moving forward.

Section 3: Program/Faculty Review and Rationale

(To be completed by program faculty or the Appeals Committee)

- Summary of student's academic/clinical/professional record

- Faculty assessment of the student's potential for success if reinstated

- Recommended conditions for reinstatement (e.g., remediation plan, academic probation, reduced course load)

Faculty/Committee Comments:

Section 5: Decision

Appeal Approved – Student reinstated with conditions as outlined

Appeal Denied – Student remains dismissed from the DPT Program

Conditions for Reinstatement (if applicable):

Program Director Signature: _____ Date: _____