


STUDENT SUPPORT RESOURCES

IN THIS ISSUE:

- Student Support Resources
- Schedule an Exam
- Upcoming Events
- Campus Connections

TOOLS FOR ONLINE LEARNERS

 wku.edu/online/srp

CAMPUS RESOURCES

 ONLINE STUDENT SERVICES

Tired of multiple log ins?

<https://my.wku.edu>

You can use your NetID to log in one time to [myWKU](https://my.wku.edu) to have one click access.


WKU


C.A.R.E.S.


 ONLINE STUDENT SERVICES

Coaching for Academic Readiness, Excellence, and Success

DO YOU NEED TO SCHEDULE AN EXAM?

 (270) 745-3158

 testing-center@wku.edu

 wku.edu/testing/students.php



@WKUOnlineStudentServices



Need helpful resources and support to thrive as an online WKU student? Our YouTube channel is here to guide you every step of the way, offering tips and advice to help you succeed!

We'd love for you to be a part of our community—click the link to subscribe and stay connected!

youtube.com/@WKUOnlineStudentServices



CONNECTING TO RESOURCES



UPCOMING EVENTS

IN THIS ISSUE:

- Student Support Resources
- Schedule an Exam
- Upcoming Events
- Campus Connections

EVENTS

[Campus Recreation and Wellness Calendar](#)

[WKU Events Calendar](#)

[WKU Sports Calendar](#)

[Spring 2026 Academic Calendar](#)

[Registration Guides](#)

4/3

LAST DAY TO DROP

Reflect on progress in each of your courses. Are you where you want to be?

Do you have a clear understanding of your current grades and expectations from professors?

Will pushing through lead to successful completion or will dropping a course help protect your GPA?

If you need support in this process, we're here to guide you-- don't hesitate to reach out.

270-725-3028

ONLINE.SUCCESS@WKU.EDU

wku.edu/online/coaching/

UPCOMING EVENTS

April

- Last Day to Drop with a "W"
 - April 3
- Apply for Dec 2026 graduation
 - April 3

May

- Finals Week
 - May 4-7
- Commencement
 - May 7
- College Recognition
 - May 8
- Final Grades
 - May 12

Did you know you can use Financial Aid to pay for On Demand courses?

Starting April 7,

make sure to complete your

"WKU On Demand/Financial Aid Request for Registration" form on TopNet under the Financial Aid tab to get set for the upcoming term! If you have questions about your eligibility, feel free to reach out to the Financial Aid office.

270-745-2755 or fa.ondemand@wku.edu

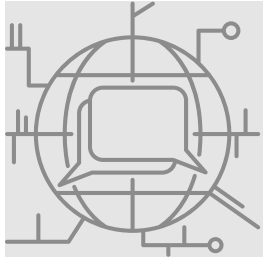
[On Demand Financial Aid](#)

Registration for Summer 2026 On Demand courses opens May 1.

Contact Us

- (270) 745-4158
- Toll Free: (800) 535-5926
- Fax: (270) 745-3623
- ondemand@wku.edu

WKU Online ON DEMAND



CAMPUS CONNECTIONS

IN THIS ISSUE:

- Student Support Resources
- Schedule an Exam
- Upcoming Events
- Campus Connections

**OGDEN COLLEGE
SPRING
CARNIVAL**

**GAMES!
ACTIVITIES!
TREATS!
PRIZES!**

**FRIDAY, APRIL 10, 2PM-4PM
BEHIND PLANETARIUM**

Understanding Your Student Account

Go to wku.edu/firstgen/getinvolved for more information

**Friday, April 10, 2026
3:00pm to 4:00 pm
DSU Career Studio
(2nd Floor, above Fresh)**

Join other first-gen students to learn about your student account, including:

- payment options
- how to avoid extra fees
- implications of your balance amount
- timing of financial aid and billing
- and more!

WKU -FIRST GEN-

There will be a Zoom option for online students. The Zoom link will be sent to anyone who **RSVPs** by April 10th in Suitable.

WKU FIRST-GEN WIN! and Alumni-in-Residence Reception

For more information: wku.edu/firstgen/getinvolved

- Meet our F1stGen Alumni-in-Residence participants and hear their stories of success.
- See what F1stGen program participants have accomplished this semester.
- Find out who earned the 20 Make It Count \$250 Awards (will it be you?!).
- Meet other first-gen students and advocates, and enjoy free food and music!

**Friday, April 24
4:00 to 5:30 pm
DSU 2123/2124
next to the Dean of Students Office**

WKU Ogden
Science & Engineering

Inspiration, Recognition, Celebration

WKU FIRST-GEN

Suitable

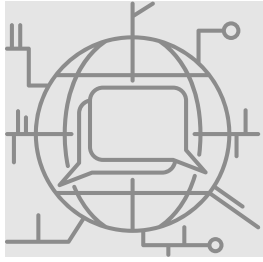
CHECK OUT FIRSTTOPPERS AND ATTEND THEIR NEXT MEETING!

Graduate Student Help Desk

Have questions about GFCB Graduate Programs? Reach out to our new account as your first resource.

GFCB.gradhelp@wku.edu





CAMPUS CONNECTIONS

IN THIS ISSUE:

- Student Support Resources
- Schedule an Exam
- Upcoming Events
- Campus Connections

UPCOMING CEBS EVENTS:

April is Autism Acceptance Month

The Kelly Autism Program (KAP) at the Suzanne Vitale Clinical Education Complex is excited to encourage a shift from mere awareness to genuine inclusion, understanding, and respect.

The Lifeskills Run for Autism

Saturday, April 11th
Starting at the Hot Rods stadium
This is a community-wide event.
[Sign up here.](#)

The Kelly Autism Program Alliance Awards

Wednesday, April 15th 5:30pm
Eva and Jim Martens Alumni Center, WKU Campus
The Alliance Awards recognize individuals and organizations that support the program and its students in meaningful ways. This year we are recognizing two CEBS members for their contributions to our programming, Angie Olive and Rheanna Plemons.

The Myths of Autism

Friday, April 17th 3:00pm
Gary Ransdell Hall, Room 1074
Peyton Collins, Director of Mental Health Services at KAP, and Gabby Robinson, KAP Advisor, will host a campus discussion on the myths of Autism. This is a free event open to the WKU campus community.

Art Show honoring Kentucky's Autism After 21

Tuesday, April 21st 2-4pm
Suzanne Vitale Clinical Education Complex
Art show with refreshments. Free and open to the WKU campus community.

Self-Care Afternoon

Friday, April 24th 2-4pm
Suzanne Vitale Clinical Education Complex
The event will start with a calm, welcoming space and a brief check-in to help you transition from the demands of the day. Students can then choose from various options based on their preferences, such as guided relaxation or light movement. Creative outlets will be available to help you decompress and better understand your sensory systems. A water hydration bar will be provided as well. The self-care day is a partnership with the Talley Family Counseling Clinic and the WKU Clinical Mental Health Counseling. This event is free and open to the WKU campus community.

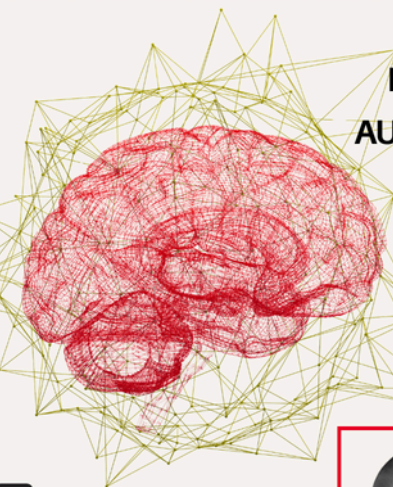
PSI CHI EVENT SCHEDULE
SPRING 2026
STUDY/SOCIAL
Gary Ransdell Hall Room 3011
4:00 pm
APR 30



2026 BOYD-LUBKER LECTURE



WED
APRIL 15TH
7 PM



GARY RANSDELL HALL AUDITORIUM

Author of *The Alignment Problem: Machine Learning & Human Values*



BRIAN CHRISTIAN

“AI & The Challenge of Preserving our Humanity”

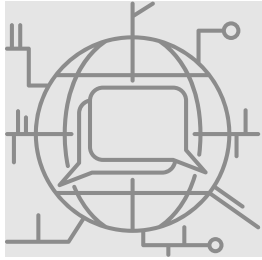


College of Education & Behavioral Sciences
wku.edu/cebs



Psychology Club Presents...
your PIE PROFESSOR
\$5.00 / Pie

Wednesday, April 1st 2:00 - 4:00 PM | Centennial Mall
A portion of the proceeds will support a local women's domestic violence shelter
Want to pie your friend instead? Pay just \$2.00



CAMPUS CONNECTIONS

IN THIS ISSUE:

- Student Support Resources
- Schedule an Exam
- Upcoming Events
- Campus Connections



TEACHER EDUCATION CONVOCATION

INAUGURAL EVENT

This special ceremony honors the formal induction of students into WKU Teacher Education and their commitment to the teaching profession. Students will be recognized as they walk the stage in celebration of this milestone in their journey.

SPEAKERS:

- The Director of the School of Teacher Education
- Dean of the College of Education and Behavioral Sciences
- A special guest speaker

APRIL 16TH 2026 6:00PM
GARY RANSELL HALL

TO REGISTER FOR THIS EVENT, STUDENTS SHOULD CHECK THEIR EMAIL FOR MORE INFORMATION.



STUDENTS WILL RECEIVE:

- A traditional commemorative pin
- A certificate

INDUCTEES, FAMILY, FACULTY AND STAFF ARE INVITED TO ATTEND!



skyteach at WKU **BEEFING UP ENVIRONMENTAL SCIENCE!**

This immersive professional development connects educators with Kentucky's beef industry while aligning agricultural practices to science standards. Participants will explore the role of cattle within environmental systems. Through hands-on learning and real-world industry insight, educators will gain classroom-ready strategies to integrate agriculture into lessons on human impact and sustainable practices.



TRISTANN BURHS
BARREN COUNTY SCIENCE EDUCATOR



BRADON BURHS
DIRECTOR OF EDUCATION



JOIN US APRIL 14TH **1st 25 Participants Will Receive A \$100 Amazon Gift Card** **4:30 - 7:30PM** **HTH 1008**
*Within 30 days of session, via email.



WKU Career Development Center

careerhelp@wku.edu

(270) 745-3095



Career Coaching

Resume Help

Informational Handouts and Resources

Career Guides and Planning

Upcoming Career Fairs

CARE AND USE OF YOUR SCHOOL'S MICROSCOPES!

THURS | APRIL 23RD | CBS 3105 | 4:00-7:00PM



We will learn how to clean, maintain, and operate a microscope (or two!) that you bring from your school. After learning how to clean and trouble-shoot your scope(s), we will go over their use.

Then we will go over the most fun student exercises (hunting for protozoans in pond water, tardigrades in moss water, and polarized light imaging of crystals) updated to utilize today's "high tech" resources (photography with cell phones and then google image searches for identifications). Free cleaning supplies and polarizing films will be provided for you to take with you, as well advice on purchasing inexpensive but durable student microscopes.

Participants will receive a tour of the Ogden College Electron Microscopy Facility and learn about possibilities for student group tours.

REGISTER NOW



PRESENTED BY DR. ANDERSLAND

ONLY 6 SPOTS



Ready to never look at an Uncrustable the same way?



Mollie Siegel
Jefferson County Math Educator

Camden Jackson
Smucker's Process Engineer

Join Camden Jackson to learn about engineering in one of the manufacturing facilities that produces this very popular snack. Alongside Mollie Siegel, Camden will invite you to imagine yourself as part of the Uncrustables team.

They will explore multiple math concepts at play to answer:
How to calculate the nutritional value of a standard Uncrustable?
At what approximate angle should the machine crimp the sandwich so that it stays together?
What happens if we were to change the shape of its design from a circle to something else?

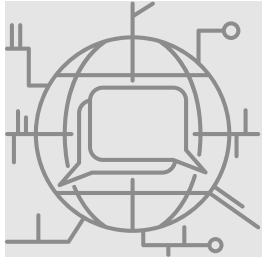
APRIL 7TH **4:30 - 7:30PM** **KTH 1008**



1st 20 Participants Will Receive A \$100 Amazon Gift Card
*Within 30 days of session, via email.

REGISTER NOW





CAMPUS CONNECTIONS

IN THIS ISSUE:

- Student Support Resources
- Schedule an Exam
- Upcoming Events
- Campus Connections

UPCOMING PCAL EVENTS:

Charlie and the Chocolate Factory

Friday, April 10th through Sunday, April 12th

Join the Department of Theatre & Dance for their upcoming production of the musical, Charlie and the Chocolate Factory! The world-famous Willy Wonka is opening the gates to his mysterious factory...but only to a lucky few. Young Charlie Bucket and four other golden ticket winners will embark on a life-changing journey through Wonka's world of pure imagination. Tickets for this musical can be purchased [here](#).



Register now for an online "Patio Chat" with PCAL's Dean, Dr. Terrance Brown. Complete the link below to set up a meeting virtually to discuss your unique experience as an online student, ask questions about PCAL programs, and get to know the Dean.



WKU College of Health & Human Services



JULIE JONES
STUDENT WELLNESS NAVIGATOR
julie.jones@wku.edu



JOANNA SHAKE
STUDENT WELLNESS NAVIGATOR
joanna.shake@wku.edu

CHHS prepares health and human services professionals who will work to improve the quality of life in their communities and beyond. We recognize this effort must start with improving the quality of life for our students while they are in college. Focusing on the 10 dimensions of wellness (or the wellness wheel), we encourage balanced, optimal wellness for CHHS students. Reach out to us!



TEACHER EDUCATION STUDENTS: Registration, Advising, and Scholarship Reminders

Summer and Fall registration dates are now posted. [Click here](#) to check the calendar and mark your date.

Before registration opens:

- ✓ **Schedule and attend your advisor appointment.** Clinical and methods courses fill quickly.
- ✓ **Review your degree audit in TopNet** and come prepared with questions.
- ✓ **Begin working on Teacher Scholarship opportunities** through the WKU School of Teacher Education. See if you can qualify to be fully funded!

[Click here for scholarship information!](#)

Grow Your Own & Apprentices

If you are identified as a **Grow Your Own student or Apprentice**, now is the time to begin conversations with your district about your **fall job placement**. Do not assume the placement will automatically align with your major requirements.

Advocate for a position that allows you to complete:

- Required observation hours
- Field assignments
- Major-specific clinical expectations

For example, if you are an **Elementary Education major**, working in a middle school setting can make it difficult to meet required observation hours unless there is a clear agreement for release time without penalty.

If you need additional support regarding advising, job placements, or next steps, please do not hesitate to reach out to **Angela Nagel** or **Josiah Super** in the School of Teacher Education.

