

# FPA MIDSOUTH FINANCIAL PLANNING AND INVESTMENTS CONFERENCE

Co-Hosted by WKU's Financial Planning Association Student Chapter & the Financial Planning Association Kentuckiana Chapter  
 Thursday, October 6<sup>th</sup> and Friday, October 7<sup>th</sup>, 2022. [Click here](#) for registration information.

## - THE NATIONALLY RECOGNIZED THOUGHT LEADERS -

**Jeff Kleintop, CFA**  
 Managing Director, Chief  
 Global Investment Strategist  
 Charles Schwab & Co., Inc.



**Carolyn McClanahan,  
 M.D., CFP®, Founder, Life  
 Planning Partners, Inc.; CNBC  
 Financial Advisor Council**



**Jeffrey Levine, CPA/PFS,  
 CFP®, CWS®, MSA; Director of  
 Advisor Education for  
 Kitces.com**



**Seema Sheth**  
 Senior V.P. & Regional  
 Executive, Federal Reserve  
 Bank of St. Louis



**David Lau**  
 Founder and C.E.O. of  
 DPL Financial Partners



## - THE FIRM AND NATIONAL ORGANIZATION LEADERS -

**Kamila Elliott,  
 CFP®, Chair, Certified  
 Financial Planner Board  
 of Standards, Inc.**



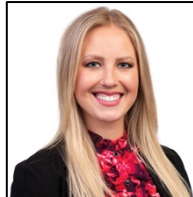
**Neil Quinlan,  
 CFP®, PMP  
 President, ARGI  
 Financial Group**



**Amy Jones**  
 Chief Talent Officer,  
 Plancorp®



**Kimberly Blakely,  
 CFP®  
 Wealth Advisor  
 Mariner Wealth Advisors**



**Heather Osborn**  
 CFP®, AAMS®, CFP™, CWA®,  
 CLU®, Financial Planning  
 Manager, Senior V.P., Baird  
 Private Wealth Management



**Lauren Seaman, MS-  
 HRM, SHRM-CP Director,  
 Human Resources, ARGI  
 Financial Group**

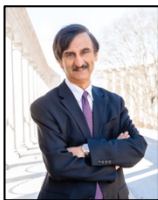


**Amber M. Lloyd,  
 APA, CFP®, CMFC, ERPA,  
 Managing Member,  
 Retirement Management  
 Services, Inc.**



## - THE ACADEMIC THOUGHT LEADERS -

**Dr. Indudeep Chhachhi**  
 Department Chair &  
 Professor of Finance,  
 Western Kentucky  
 University



**William J. Trainor Jr.,  
 Ph.D., CFA  
 Professor of Finance  
 East Tennessee State  
 University**



**David Nanigian, Ph.D.,  
 MBA, CFP®  
 Director Of Education, Certified  
 Financial Planner Board of  
 Standards, Inc.**



**Ron A. Rhoades, JD, CFP®  
 Director, Personal Financial  
 Planning Program, Assoc.  
 Professor of Finance,  
 Western Kentucky U.**

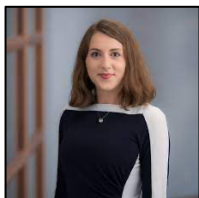


**Elijah Essa, CFP®  
 Financial Planner  
 Coats Financial and future  
 Adjunct Professor,  
 WKU PFP Program**



## - THE THOUGHTFUL ALUMS -

**Emily Jackson, CFP®  
 Wealth Manager  
 Plancorp®**



**Katie Hightchew**  
 Senior Associate, Dimensional  
 Fund Advisors



**Tabitha Thomas**  
 Financial Planning Associate  
 Coats Financial



**Erin O'Reilly, CFP®  
 Financial Advisor, ARGI Inspire  
 Multi-Family Office**



**Chelsea Smith, CFP®  
 Retirement Planning Specialist  
 Advisor, Physician Family  
 Financial Advisors Inc.**



## AGENDA SUMMARY

### Thursday, Oct. 6<sup>th</sup> Preconference for Students & Potential Employers

(Included as part of registration for the conference at no additional charge.)

If your firm desires to participate, please contact: [ron.rhoades@wku.edu](mailto:ron.rhoades@wku.edu).

- 9:00 – 9:30: **Empowering Success: Launching A Career In Financial Planning**, by Emily Jackson, CFP®, on behalf of *The Institute for the Fiduciary Standard*
- 9:30-10:15: **WKU Graduate Panel: Making the Most of Your Job Search and First Year.** Emily Jackson, CFP®, '19; Elijah Essa, CFP®, '16; Katie Hightchew, '19 Chelsea Smith, CFP®, '20; and Tabitha Thomas, '21.
- 10:25-11:15 a.m. **"The Recruiters" Panel Discussion.** Human Resources professionals from several diverse firms share their insights.
- 11:15am - 12:25pm **Networking Lunch for Preconference Attendees**

### Thursday, Oct. 6<sup>th</sup>: First Day of Main Conference (12:30-5:40pm)

- 12:30-12:45: **Welcome and Opening Remarks**
- 12:40-1:40: **Keynote Presentation: The Economy and Financial Literacy**, Seema Sheth, Federal Reserve Bank of St. Louis
- 1:55-2:50: **Keynote Presentation: Planning for Health Care Costs**, Dr. Carolyn McClanahan
- 3:05-4:00: **Integrating Health Care into Wealth Care**, Dr. McClanahan
- 3:05-4:00: **Defense Against the Black Swans – Casting the Strongest Charm**, Dr. Indudeep Chhacchi and Dr. William J. Trainor Jr.
- 4:00-4:45: *Break with Sponsors and Exhibitors*
- 4:45-5:40: **Implementing Annuities & How to Talk About Them with Clients**, David Lau, DPL Financial
- 4:45-5:40: **Creating and Maintaining a Firm Culture that Promotes Growth and Opportunities**, Neil Quinlan and Lauren Seaman

**Thursday, Oct. 6<sup>th</sup>: 6:30-8:30pm: Evening Reception at the National Corvette Museum.** Join your hosts and colleagues for a self-guided tour of the National Corvette Museum. Includes with hors d'oeuvres and cash bar. *Sponsored by Beau Handy, CFP®, CFS®, Senior Partner and Wealth Manager for Guidance Capital, Louisville, KY.*

### Friday, Oct. 7<sup>th</sup>: Second Day of Main Conference (7:45 a.m.–3:00 p.m.)

- 7:45-8:20: **Continental Breakfast with Exhibitors**
- 8:20-8:30: **Introductions**
- 8:30-9:25: **Keynote Presentation Sponsored by ARGI Financial Group: 10 Critical Errors Advisors Must Avoid**, by Jeff Levine
- 9:40-10:35: **Estate Planning for Income Taxes: Maximizing Step-Up in Basis for Couples**, by Jeff Levine
- 9:40-10:35: **Women in Finance: As Leaders, Advisors and Clients.** Panel Discussion with Kimberly Blakely, CFP®, Amber Lloyd, APA, CFP®, CMFC, ERPA, Heather Osborn, CFP®, and Erin O'Reilly, CFP®.
- 10:35-11:05: *Morning Break with Exhibitors*
- 11:05-Noon: **Update on CFP Board**, by Kamila Elliott, Chair of CFP Board, and its Director of Education, David Nanigian
- Noon-1:00 **Luncheon**, including brief presentations by Dr. Chhacchi, Chair, WKU Department of Finance, and Chris Shook, Dean, Gordon Ford College of Business
- 1:05-2:00pm: **Closing Keynote Presentation: Market Perspectives**, by Jeffrey Kleintop, CFA, is Managing Director and Chief Global Investment Strategist at Charles Schwab
- 2:05-3:00pm: **Issues Under ERISA: IRA Rollovers, ESG, Private Equity, Annuities, CyberCurrencies, and Class Actions**, by Ron Rhoades

## WE THANK OUR SPONSORS !!!



## REGISTRATION INFORMATION

To register, [please visit this web page](https://www.wku.edu/lp/treps/finance/index.php) or go to <https://www.wku.edu/lp/treps/finance/index.php>

### Registration Fees for the 2-Day Conference:

- \$175 early bird by Sept. 13<sup>th</sup>, \$195 thereafter for **practitioners**
- \$150 early bird by Sept. 13<sup>th</sup>, \$170 thereafter for **WKU alumni**
- \$125 early bird by Sept. 13<sup>th</sup>, \$145 thereafter for **FPA Kentuckiana members**
- \$45 early bird by Sept. 13<sup>th</sup>, \$55 thereafter for **students and faculty members** of CFP Board Registered-Programs

*Booths for interviews are provided courtesy of a grant from Dr. Jonathan Handy, Asst. Professor of Finance, Western Kentucky University.*

### Separate Registration Fees for Optional Thursday Evening Reception:

- \$45 fee (includes self-guided tour of the National Corvette Museum, and hors d'oeuvres; cash bar available)

### Will You Provide a Scholarship for a WKU Student to Attend?

*You are invited to provide scholarships for WKU students, in order to ensure students in financial need can attend, at \$45 per student.*

## ABOUT OUR VENUE

WKU's [Knically Conference Center](#) is located at [2355 Nashville Rd, Bowling Green, KY 42101](#). Parking is free; no parking pass is required.

**Hotels.** [Staybridge Suites](#) is located next door to the Knically Conference Center. [Many other hotels](#) are available within a short driving distance.

**Airport.** The closest major airport is Nashville International, located 70 miles from the Knically Center. Due to construction on I-65, please allow 1 hour 45 minutes driving time from the airport to Bowling Green, KY.

## INFORMATION FOR EXHIBITORS / SPONSORS

If your firm or organization is interested in exhibiting at the event, or sponsoring, please contact Dr. Ron Rhoades at [ron.rhoades@wku.edu](mailto:ron.rhoades@wku.edu). Exhibitor and sponsorship opportunities include:

Emerald (\$10,000)	Gold (\$5,000)
Silver (\$2,500)	Bronze (\$1,000)