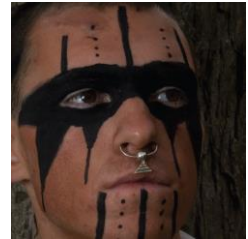


NATIVE AMERICAN PAINT



Native American paint was usually made from crushed minerals such as iron oxide which creates red paint. This type of paint can be mixed with water, or applied dry, but it was most often mixed with bear grease. Paint had many uses and meanings.



Paint could be made in many different colors, but red, black, and white were the most common. Blue and yellow were also used. Each color had its own meaning and was worn appropriately. Paint is widely open for interpretation.



Red= Life, most common and sometimes worn daily
Black= Death, warfare, only worn during battle & possibly mourning
White= Usually worn as a peace color, but sometimes worn in battle
Yellow= Usually worn for peace, but sometimes worn in battle
Blue= Usually a peace color, but not as common.

When men went to battle they would frequently wear a breechcloth and a shooting pouch and cover themselves in paint. It wasn't common for women to wear paint. When they did they wore a few dots over their eyes and a line in the part of their hair.

BEADS

Chevron and glass wampum style beads were among the most common beads traded to the Native Americans. The Native Americans used them to make necklaces, bracelets, earrings, and to decorate their clothing and gear. The Native Americans sometimes made their own beads out of shell and other natural substances.



Wampum Iroquois Belts



Chevron Beads