

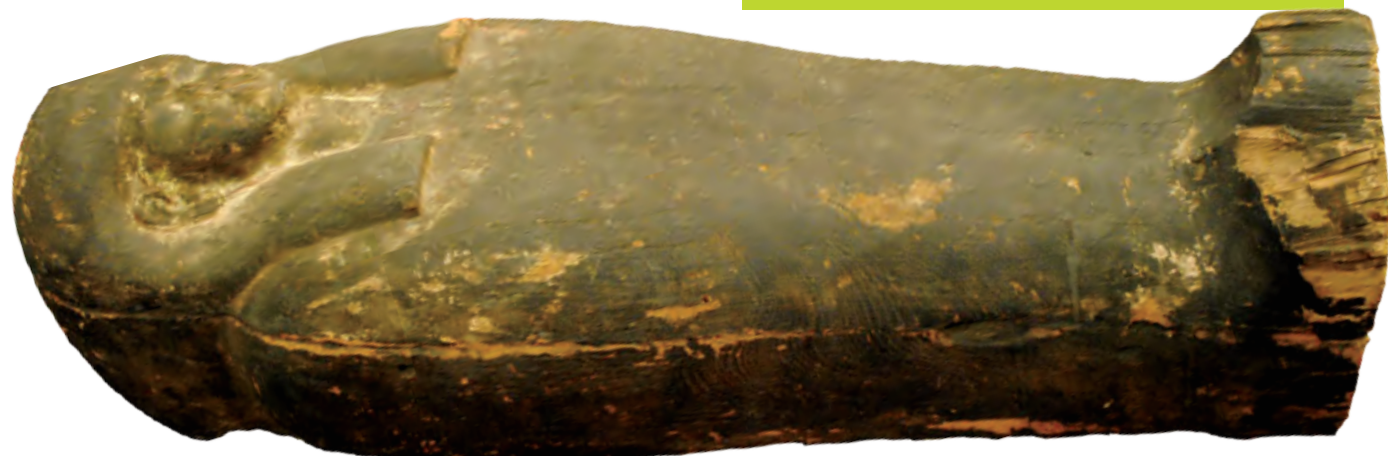
# Snell-Franklin Decorative Arts Gallery

This gallery displays decorative arts such as silver, glass, ceramics, paintings, furniture, and other anthropological items used to decorate homes throughout different periods of history.

Many of the items in this gallery were donated to the museum.



**Did you know?**  
There is an Egyptian sarcophagus in the gallery that is carved out of wood.  
**Sarcophagus:** a coffin, typically adorned with a sculpture or inscription and associated with the ancient civilizations of Egypt,



# Richardson Quilt Gallery

The Richardson Quilt Gallery is a changing gallery space. Each time the exhibit changes, different quilts are chosen based on a common theme. The quilt collection holds more than 250 quilts including examples of many popular patterns and techniques. Do you recognize any of the designs from quilts you or your family have at home?

Design your own quilt!

