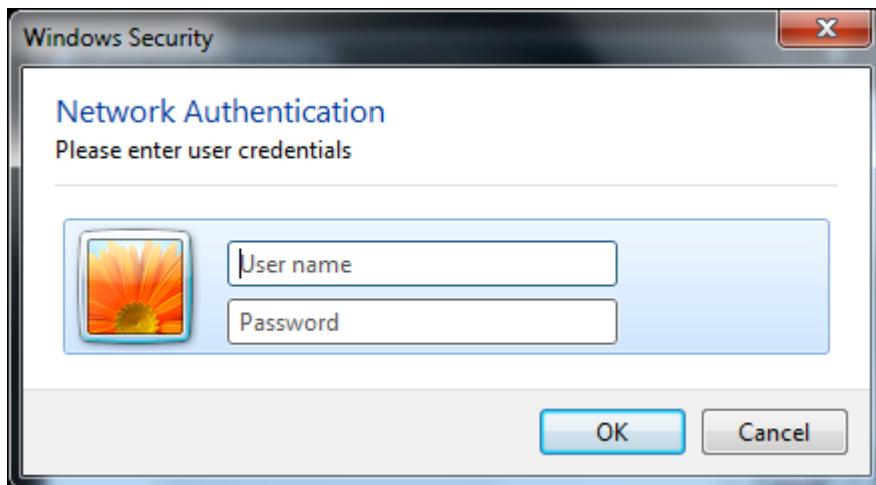


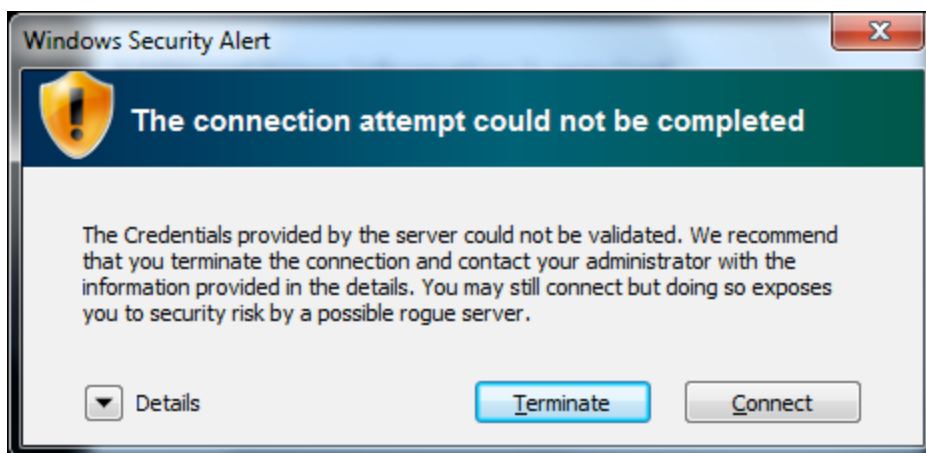
Instructions for using WKU-SECURE wireless network

Windows 7 computers

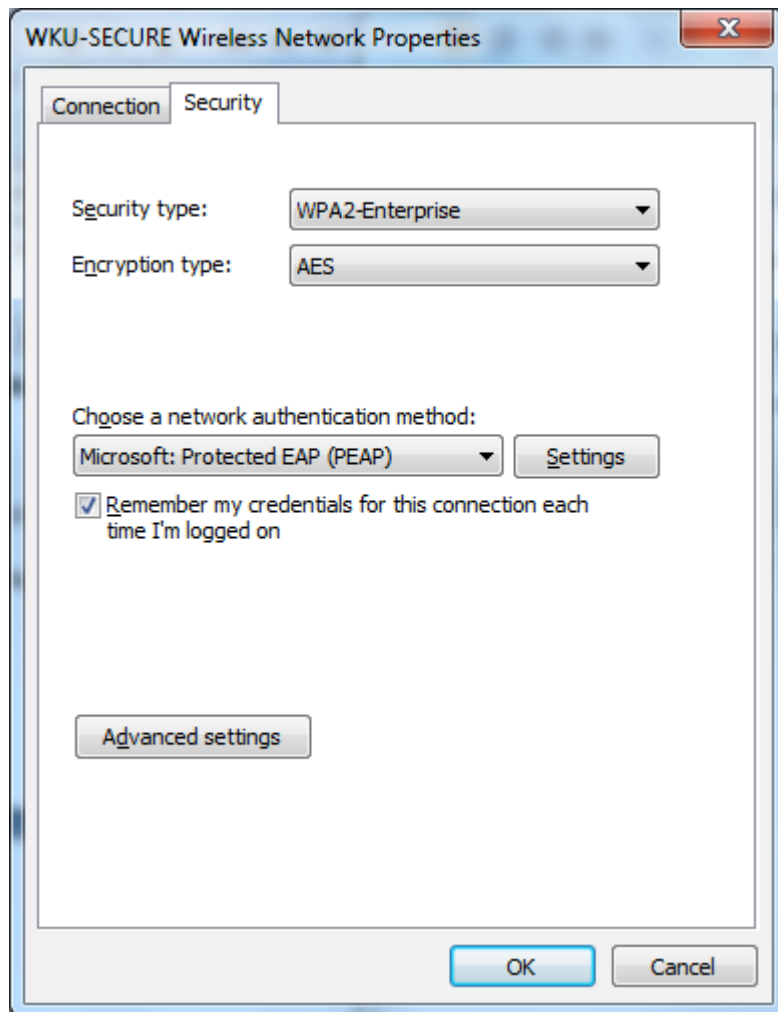
- Click the **Windows Wi-fi** icon in system tray.
- Select **WKU-SECURE** from network list.
- Verify that the “connect automatically” box is checked.
- Click **Connect**.
- In the Windows Security box, provide your NetID credentials **if prompted**.



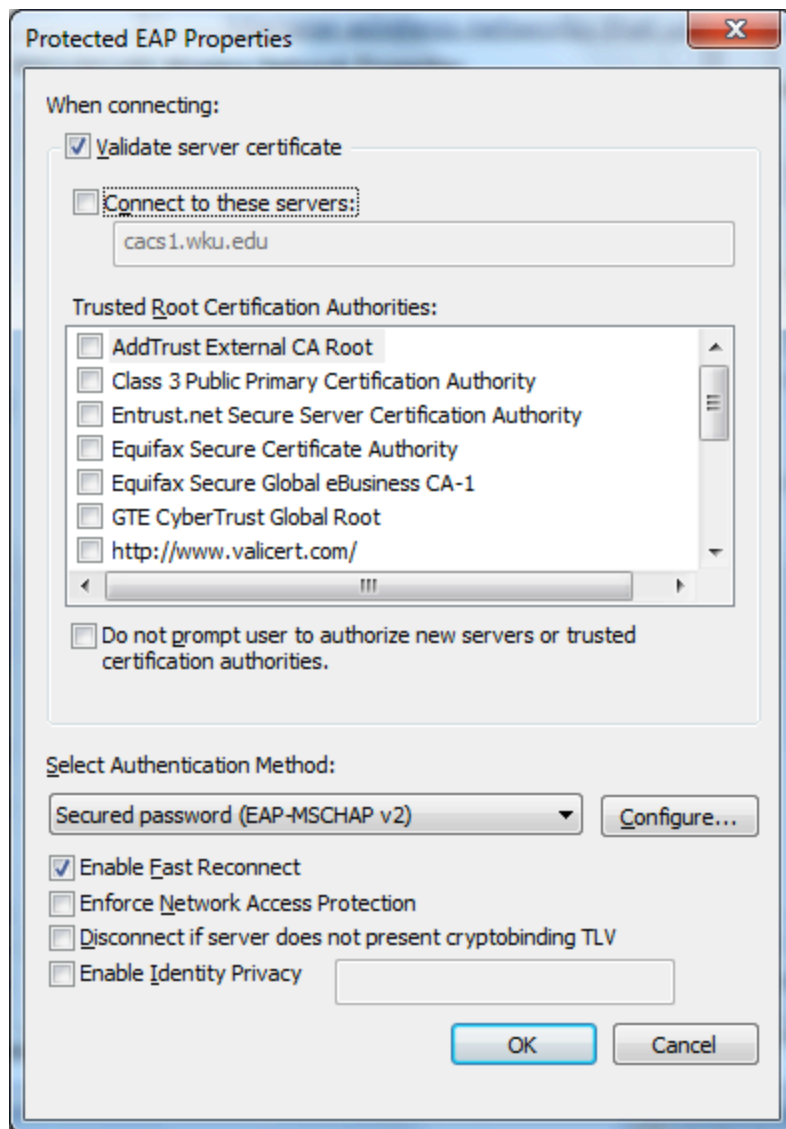
- If the Windows Security Alert error appears, click **Connect**.



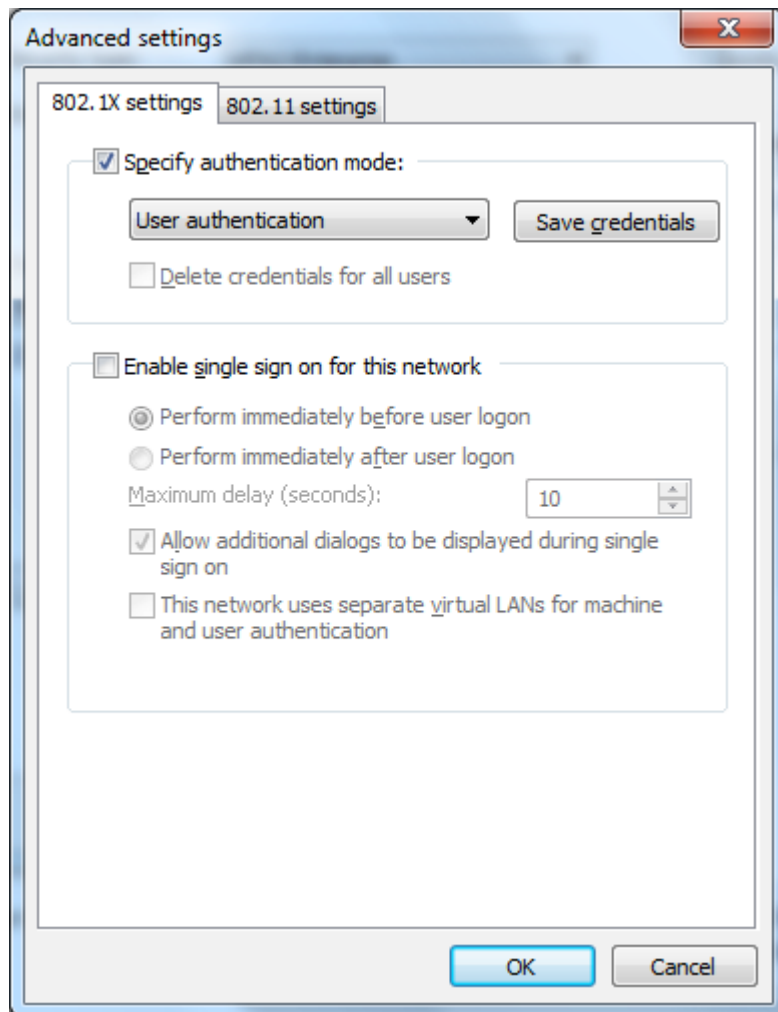
- Click the **Windows Wi-fi** icon in system tray.
- Click **Open Network and Sharing Center**.
- Click **Manage wireless networks** from the left menu bar.
- Double-click **WKU-SECURE**.
- Go to the **Security** tab in the WKU-SECURE Wireless Network Properties window.



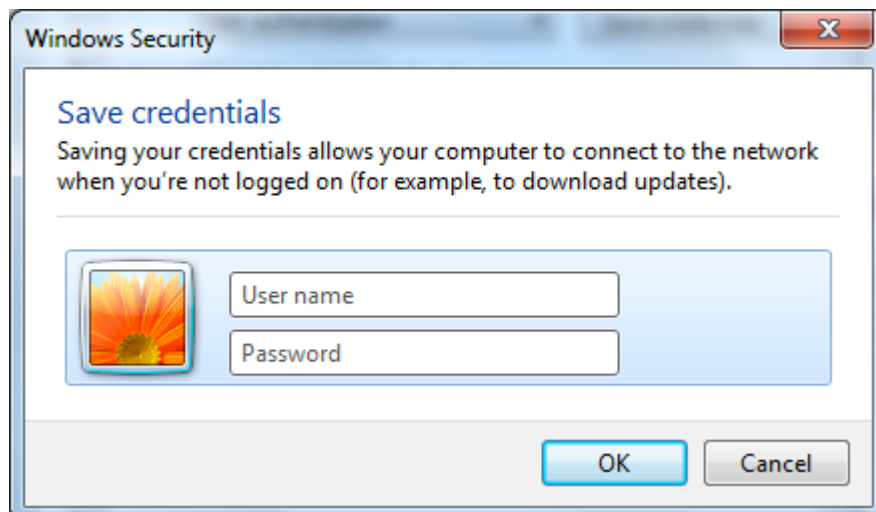
- Select security type: **WPA2-Enterprise**.
- Select network authentication method: **Microsoft Protected EAP (PEAP)**.
- Click "**Remember my credentials**" checkbox.
- Click **Settings** (next to network authentication method).



- **Validate server certificate** should be checked.
- Uncheck **Connect to these Servers**.
- In the Trusted Root Certification Authorities box, select **Thawte Premium Server CA**.
- Click **OK**.
- In the WKU-SECURE Wireless Network Properties window, click **Advanced Settings**.



- In the Advanced settings window, **Specify authentication mode** should be checked.
- Select **"User authentication"** from dropdown box.
- Click **"Save credentials."**



- Enter your NetID credentials.
- Click **OK, OK, OK** to close all the open windows.
- Again in the Manage Wireless Networks window: Select **WKU-SECURE**.
- Click **Move Up** to move it to the top of the list.