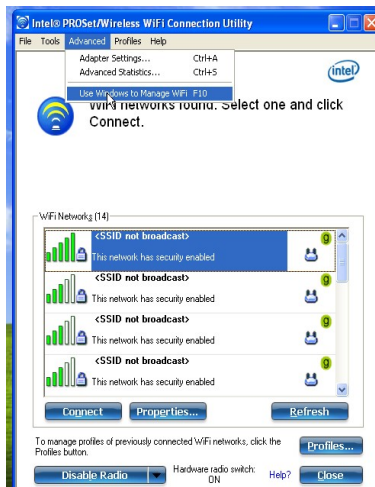


WKU Wireless fix for WKU Secure

How to setup windows as the default wireless connection manager.

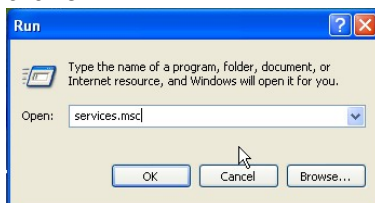
Step 1 – Disable the Intel/Dell/3rd party Controller

The different adapters and different versions will have the toggle in different locations. Look for something that says “use windows to manage” or “turn on wireless zero config”. If there is an option to save this for future use make sure to check that box. Also look for anything that states “Hide this icon, or hide this utility”, as we won’t be using the 3rd party software any longer.

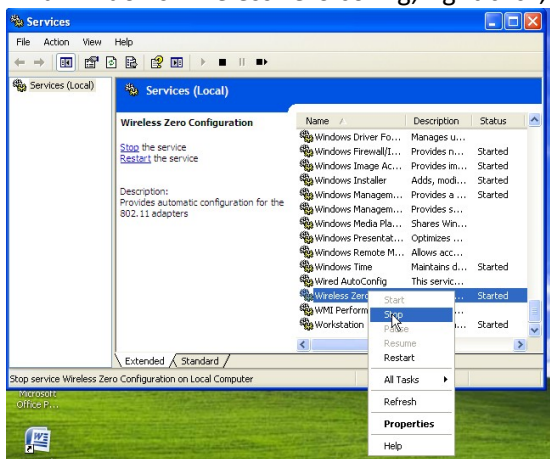


Step 2 – Fix the services.msc

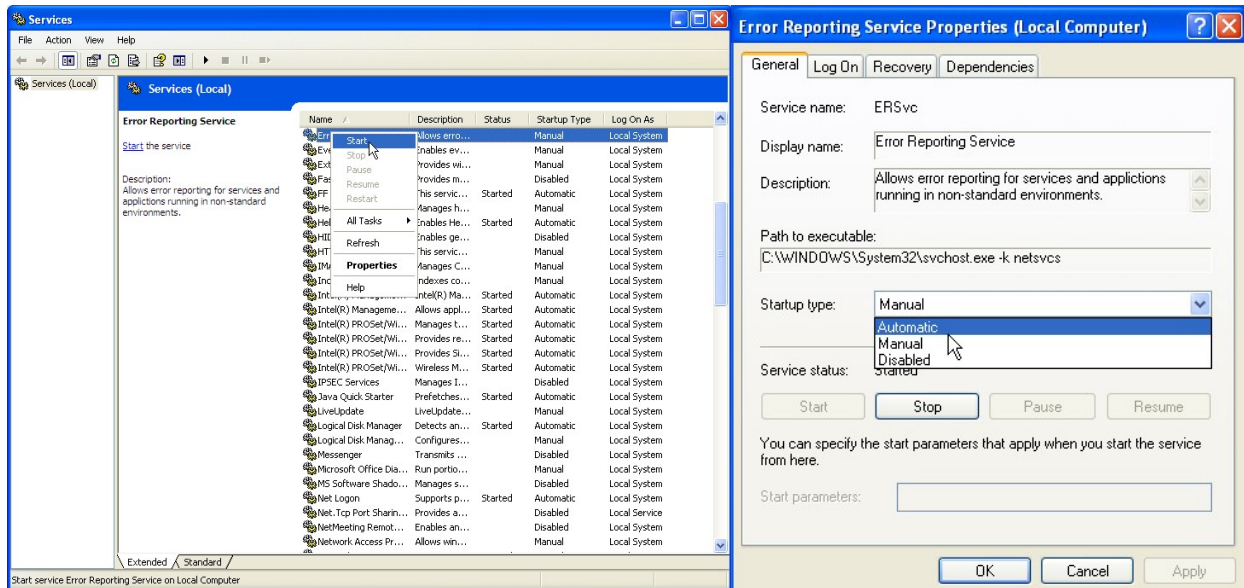
To access the service list click on the start menu and go to the run command. Type in services.msc and click ok



Find windows wireless zero config, right click, and stop the service.

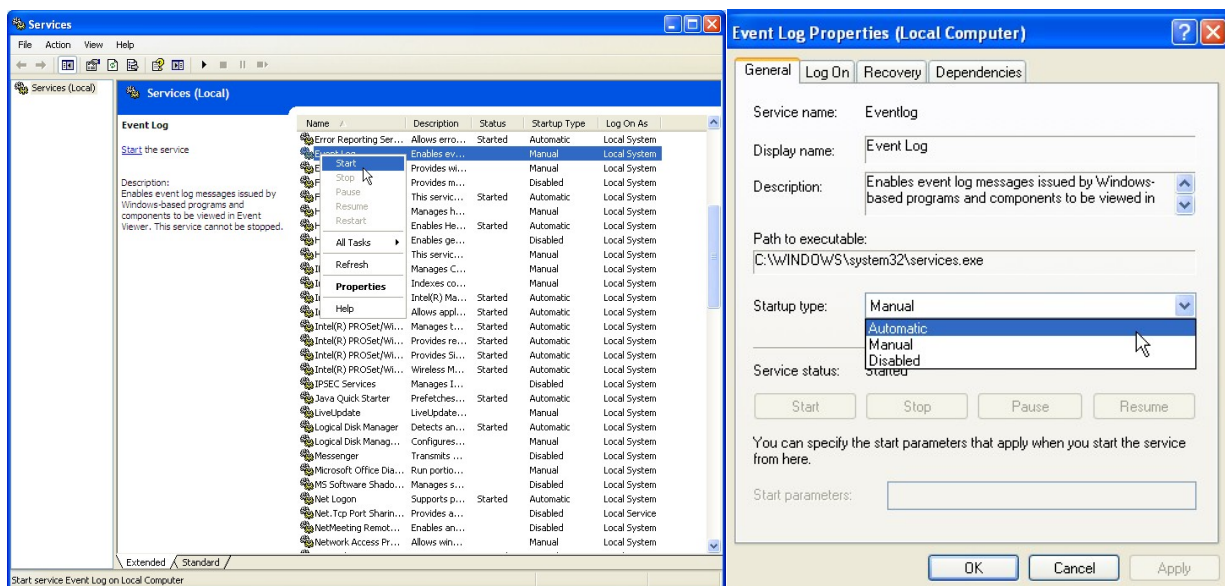


Next find the Error Reporting and Event Log services. Both of these need to be started, and set to automatic. Right click on the service to start and double click to open the menu to set to automatic.



The screenshot shows the Windows Services console with the 'Error Reporting Service' selected. The 'Properties' window is open, showing the 'General' tab. The service name is 'ERSvc', display name is 'Error Reporting Service', and description is 'Allows error reporting for services and applications running in non-standard environments.' The path to executable is 'C:\WINDOWS\System32\svchost.exe -k netsvcs'. The startup type is set to 'Automatic'.

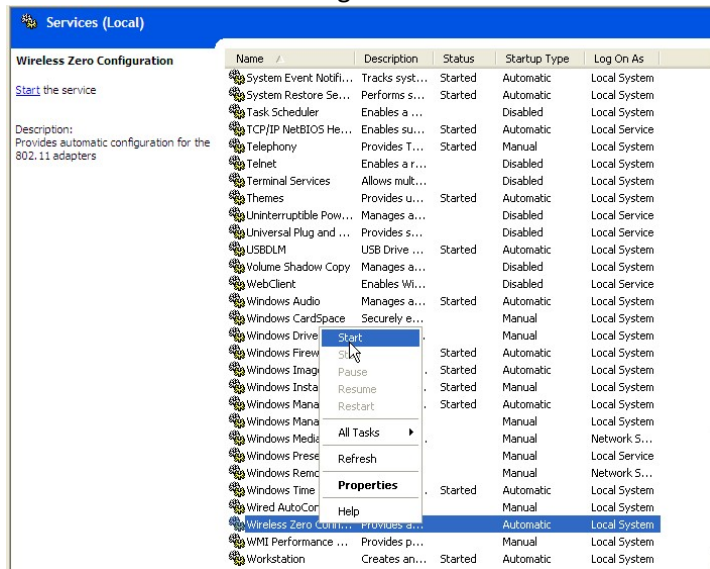
Name	Description	Status	Startup Type	Log On As
Error Reporting Service	Allows error...	Stopped	Manual	Local System
Event Log	Enables ev...	Stopped	Manual	Local System
Extensible Authentication Protocol (EAP)	Provides wi...	Stopped	Manual	Local System
File Replication Service (FRS)	This servic...	Stopped	Automatic	Local System
Health Reporting Service (HRS)	Manages h...	Stopped	Manual	Local System
Health Service (HS)	Enables He...	Stopped	Automatic	Local System
HTTP File System (HTFS)	This servic...	Stopped	Manual	Local System
Indexing Service (IIS)	Manages c...	Stopped	Manual	Local System
Indexing Service (IIS) - Local System	Manages c...	Stopped	Manual	Local System
Intel(R) Management Engine Components (IMEC)	Allows appl...	Stopped	Automatic	Local System
Intel(R) PROSet/Wireless Adapter (IPSW)	Manages t...	Stopped	Automatic	Local System
Intel(R) PROSet/Wireless Adapter (IPSW) - Local System	Provides re...	Stopped	Automatic	Local System
Intel(R) PROSet/Wireless Adapter (IPSW) - Local System	Provides re...	Stopped	Automatic	Local System
Intel(R) PROSet/Wireless Adapter (IPSW) - Local System	Provides re...	Stopped	Automatic	Local System
IPSEC Services	Wireless M...	Stopped	Automatic	Local System
Java Quick Starter	Manages I...	Stopped	Automatic	Local System
LiveUpdate	Prefetches...	Stopped	Automatic	Local System
Logical Disk Manager	LiveUpdate...	Stopped	Manual	Local System
Logical Disk Manager	Detects an...	Stopped	Automatic	Local System
Logical Disk Manager	Configures...	Stopped	Manual	Local System
Messenger	Transmits ...	Stopped	Manual	Local System
Microsoft Office Dis...	Run portio...	Stopped	Manual	Local System
MS Software Shado...	Manages s...	Stopped	Disabled	Local System
Net Logon	Supports p...	Stopped	Automatic	Local System
Net.Tcp Port Sharin...	Provides a...	Stopped	Disabled	Local Service
NetMeeting Remot...	Enables an...	Stopped	Disabled	Local System
Network Access Pr...	Allows win...	Stopped	Manual	Local System



The screenshot shows the Windows Services console with the 'Event Log' service selected. The 'Properties' window is open, showing the 'General' tab. The service name is 'Eventlog', display name is 'Event Log', and description is 'Enables event log messages issued by Windows-based programs and components to be viewed in Event Viewer. This service cannot be stopped.' The path to executable is 'C:\WINDOWS\system32\services.exe'. The startup type is set to 'Automatic'.

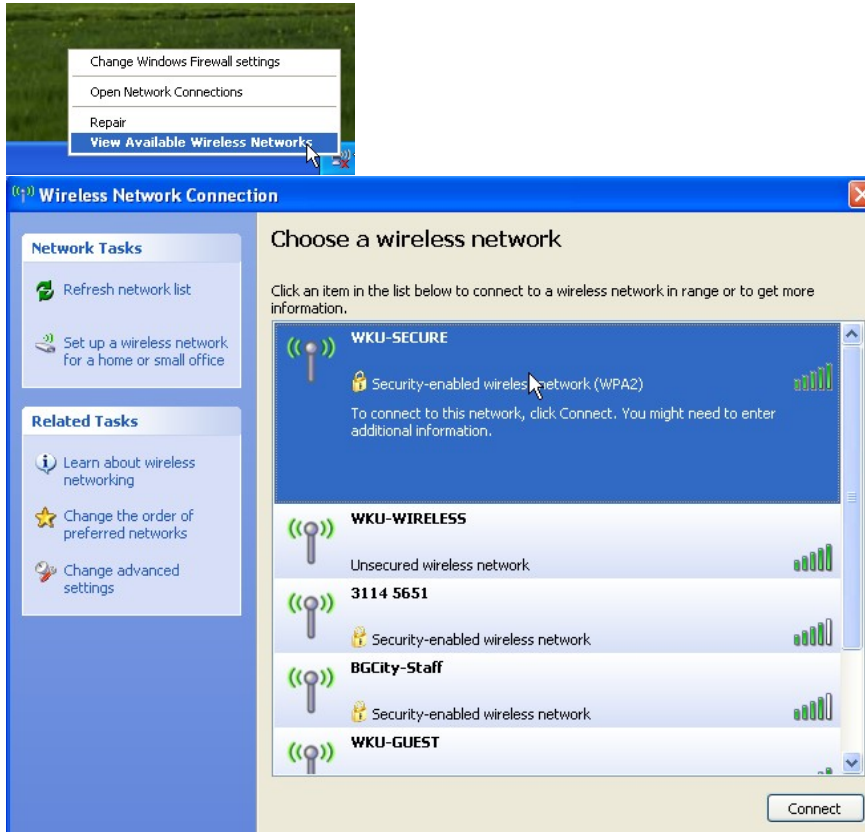
Name	Description	Status	Startup Type	Log On As
Error Reporting Ser...	Allows error...	Stopped	Automatic	Local System
Event Log	Enables ev...	Stopped	Manual	Local System
Extensible Authentication Protocol (EAP)	Provides wi...	Stopped	Manual	Local System
File Replication Service (FRS)	This servic...	Stopped	Automatic	Local System
Health Reporting Service (HRS)	Manages h...	Stopped	Manual	Local System
Health Service (HS)	Enables He...	Stopped	Automatic	Local System
HTTP File System (HTFS)	This servic...	Stopped	Manual	Local System
Indexing Service (IIS)	Manages c...	Stopped	Manual	Local System
Indexing Service (IIS) - Local System	Manages c...	Stopped	Manual	Local System
Intel(R) Management Engine Components (IMEC)	Allows appl...	Stopped	Automatic	Local System
Intel(R) PROSet/Wireless Adapter (IPSW)	Manages t...	Stopped	Automatic	Local System
Intel(R) PROSet/Wireless Adapter (IPSW) - Local System	Provides re...	Stopped	Automatic	Local System
Intel(R) PROSet/Wireless Adapter (IPSW) - Local System	Provides re...	Stopped	Automatic	Local System
Intel(R) PROSet/Wireless Adapter (IPSW) - Local System	Provides re...	Stopped	Automatic	Local System
IPSEC Services	Wireless M...	Stopped	Automatic	Local System
Java Quick Starter	Manages I...	Stopped	Automatic	Local System
LiveUpdate	Prefetches...	Stopped	Automatic	Local System
Logical Disk Manager	LiveUpdate...	Stopped	Manual	Local System
Logical Disk Manager	Detects an...	Stopped	Automatic	Local System
Logical Disk Manager	Configures...	Stopped	Manual	Local System
Messenger	Transmits ...	Stopped	Manual	Local System
Microsoft Office Dis...	Run portio...	Stopped	Manual	Local System
MS Software Shado...	Manages s...	Stopped	Disabled	Local System
Net Logon	Supports p...	Stopped	Automatic	Local System
Net.Tcp Port Sharin...	Provides a...	Stopped	Disabled	Local Service
NetMeeting Remot...	Enables an...	Stopped	Disabled	Local System
Network Access Pr...	Allows win...	Stopped	Manual	Local System

Start the wireless zero config.



Step 3 – Connect to WKU-SECURE

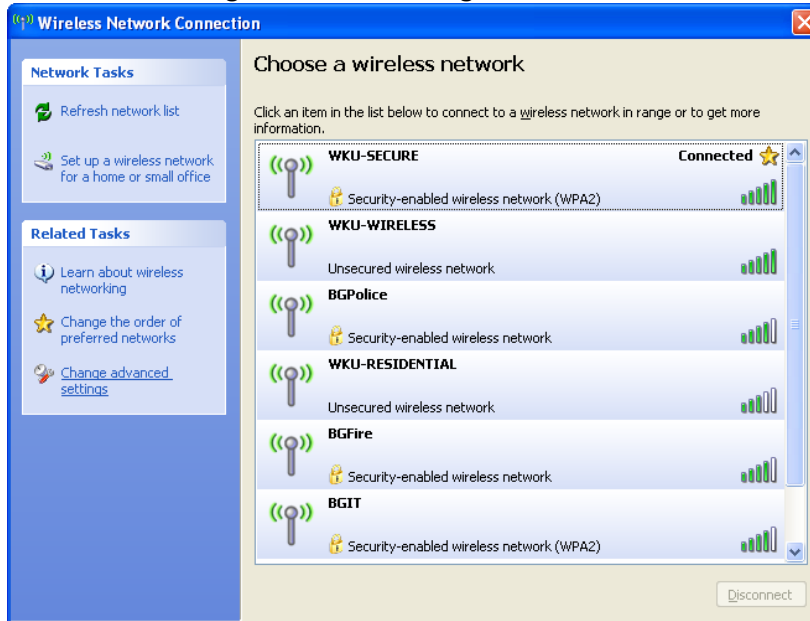
Right click on the wireless icon and select view available networks. Click on WKU-SECURE and click connect.



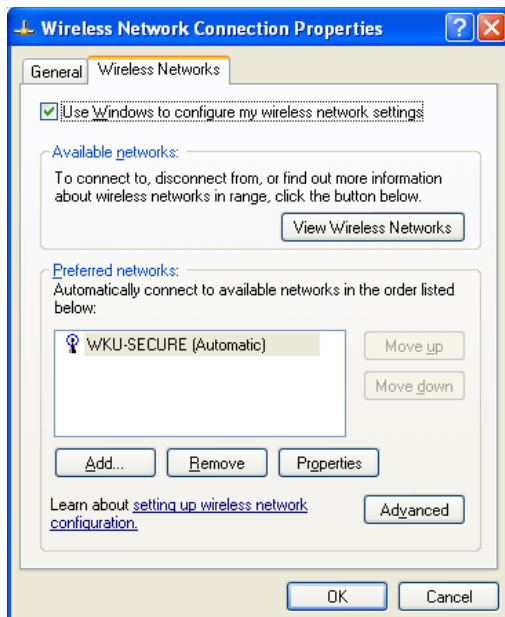
Configuring WKU-SECURE as the default Wireless Client

Step 1 – Configure the preferred networks

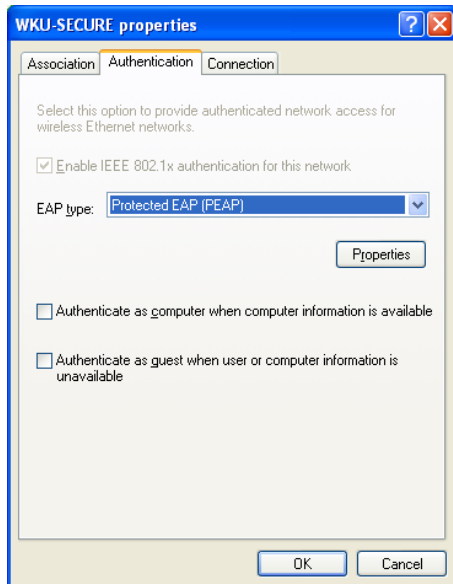
- Right-click the Windows Wireless icon in system tray.
- Select **View Available Wireless Networks**.
- Select **WKU-SECURE** and click **Connect**.
- Click **Change Advanced Settings** in the left-side menu bar.



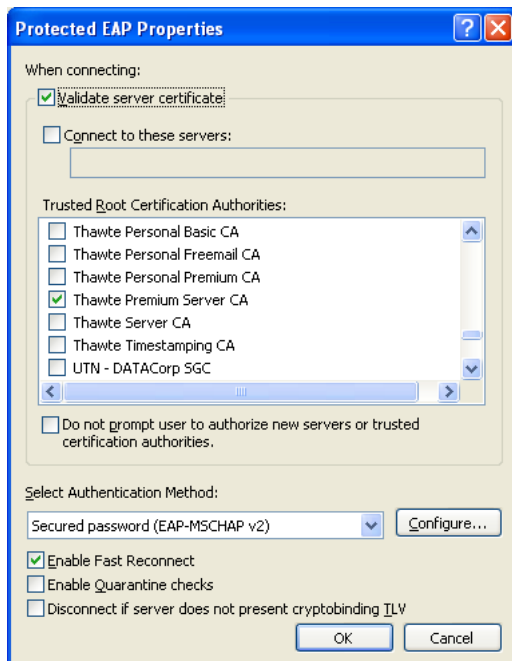
- Click the **Wireless Networks** tab.



- Select **WKU-SECURE**.
- Click the **Properties** button.
- Click the **Authentication** tab.



- Uncheck the box for "**Authenticate as computer when computer information is available.**"
- Under EAP type, select "**Protected EAP (PEAP)**".
- Click the **Properties** button.



- Check the box for "**Validate server certificate.**"

- Under "**Trusted Root Certification Authorities**," check the box for "**Thawte Premium Server CA**".
- Click the **Configure** button.



- Uncheck the box for "**Automatically use my Windows logon name and password (and domain if any).**"
- Click **OK, OK, OK, OK** to close all the open windows.
- Right-click the Windows Wireless icon in the system tray.
- Select **View Available Wireless Networks**.
- Select "**Change the order of preferred networks**" in the left-side menu bar.
- Select **WKU-SECURE** and click the **Move Up** button until it is at the top of the list.