



PLAN TO LIVE

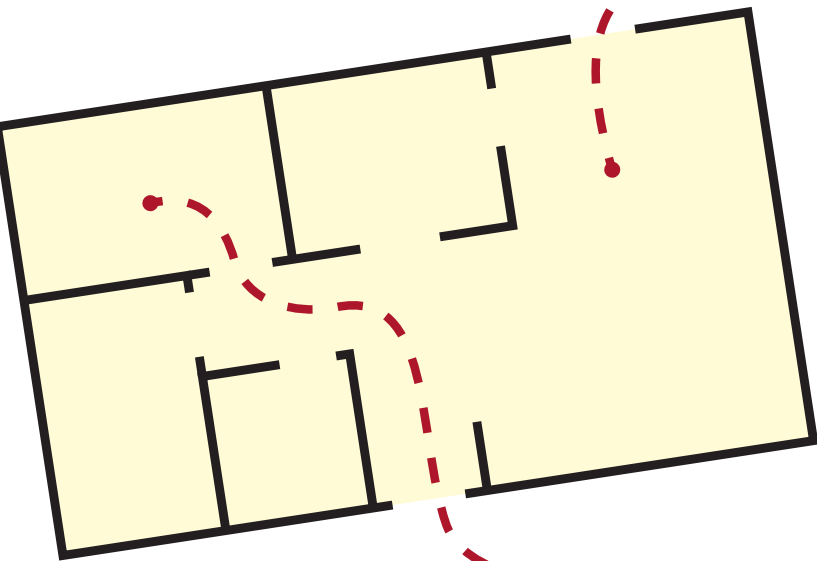
KNOW YOUR ESCAPE AND PRACTICE IT!

Escape Plan Safety Tips

- Identify two ways out of every room.
- Ensure that all windows and doors open easily.
- Keep escape routes clear of clutter.
- Establish an outside meeting place.
- Have two fire/evacuation drills a year.

If a Fire Occurs

- Feel the door; if the door is hot, don't open it. Use your alternate exit.
- Leave immediately, closing doors behind, and knock on other doors as you exit.
- If you must escape through smoke, crawl low under the smoke keeping your mouth covered.
- Get out before phoning for help.
- Once you're out, stay out!
- Be the **Hero on the Outside** by providing information to firefighters about what/who might be inside.



DID YOU KNOW?

In the last decade, college students have died in fires because:

- There was only one way out of their room, and it was blocked by the fire.
- Exit signs were covered to create ambience.
- The window used for escape was too small.
- The path to the door was blocked by boxes, bicycles and furniture.

Take all fire alarms seriously.
Never ignore a fire alarm.

Visit www.usfa.fema.gov/college
to learn more.