

Student Accommodations - Fall Semester 2010

Accommodations

Accessible parking	Allow Student Eat/Drink	Additional Time to Get to Class	Classes moved alternate location	Extended Test time up to Double Time	Multiple Choice tests in lieu pf essay	Multiple choice tests using scantron		
1	1	12	4	389	2	1	410	
No Lifting above 10#	Occasional exception to Absentee/Tardiness Policies	Occasional exception to Absentee/Tardiness Policies due to Disability	Occasional extension of due dates	Occasional extension of due dates on Written Assignments	Oral Testing	Hand write responses to exams when typing in required		
1	40	7	187	3	68	1	307	
Student-diffculty w/fatigue side effects of medication	Student may need to leave class frequently	Quiet environment for testing	Special consideration - Spelling Errors	Special condiseration grading oral presentation due to disability	Special Housing Accommodations	Special Printed Material		
1	5	117	24	1	79	13	240	
Other	Priority Registration	Books on CD	Use of Notetaker	Use of laptop for Notes	Priority seating	Use of Reader		
3	531	531	196	9	91	1	1362	
Student may leave class suddenly	Student may need to stand once/twice durng class	Use of sign language Interpreter	Use of table and chair instead of desk	Use of calculator in class	Use of captioning in Class	Use of CCTV or enlarged printout of test		
3	6	1	6	43	8	1	68	
Use of laptop for class notes	Use of laptop for exams/quizzes	Use of scribe	Use of tape recorder in class	Verbal discussion of notes	Wheelchair accessible desk	Books On CD		
12	2	2	52	2	1	531	602	
Course Substitution Due to Disability	Exemption from volunteer Work due to Physical Limitations	Provide hardcopies of course material to student	Quiet environment for studying	Fatigue due to prescribed medication	Student may need to bring food to class	Student may need t leave class frequently		
1	3	1	1	1	1	5	13	
Listen to music while taking exams/quizzes	Use of calculator during tests	Use of laptop for essay exams or oral testing on essay exams	Use of soft chair in classroom	Use of technology in class	Written test in lieu of scantron			
1	4	2	1	2	1		11	
Total number of accommodations provided								3013

Student Diagnosis - Fall Semester 2010

Diagnosis

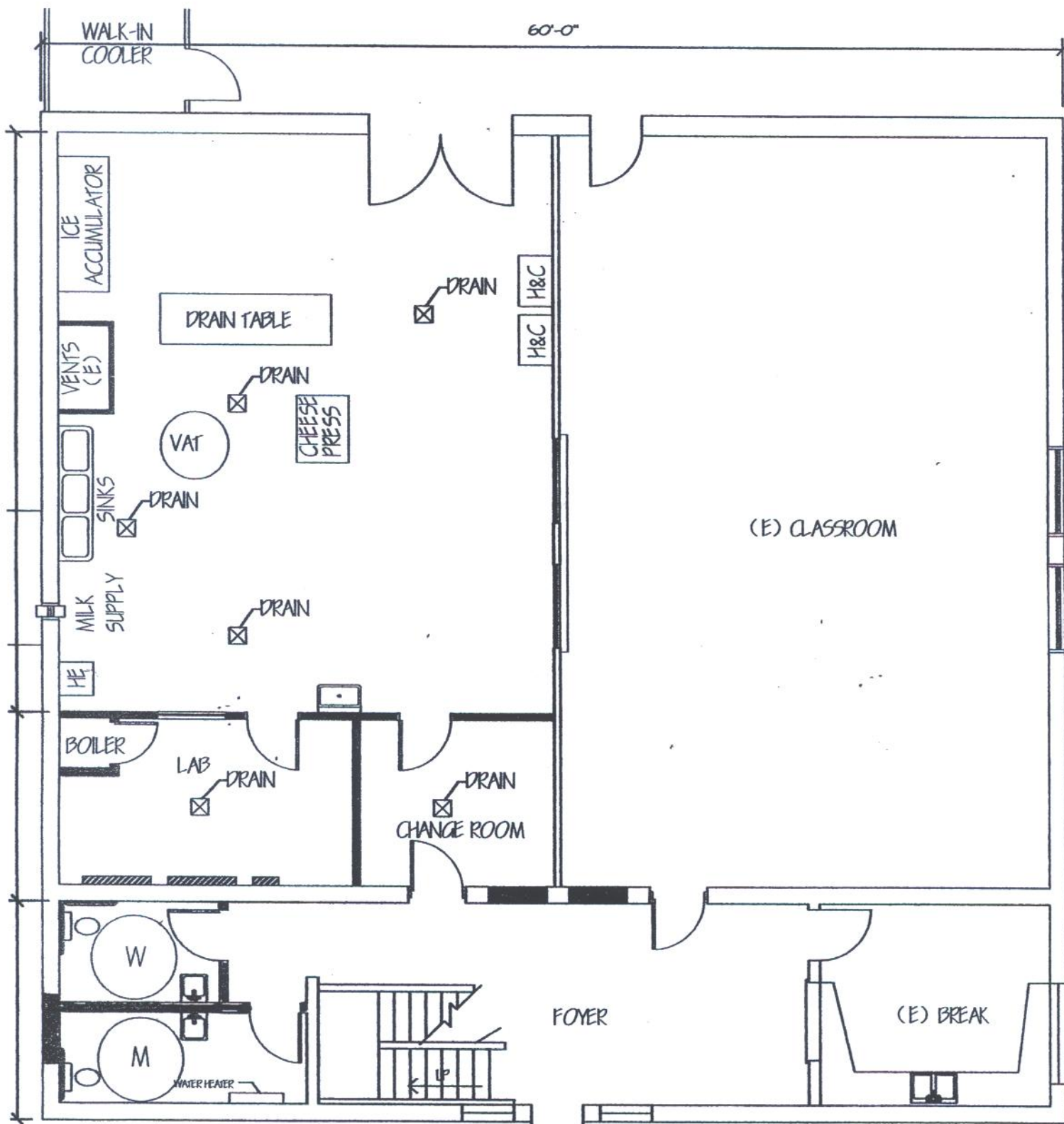
Math Difficulty	Legally Blind	Learn. Dis	Written Lang	Fibromyalgia	Arm/Hand Injury	Hard of Hear
51	2	164	58	5	5	10
Head Injury	Irritable Bowel Sy	Knee/leg inj	Dystonia	Dysgraphia	Diabetes	Depression
4	4	2	1	2	10	42
Muscular Dystrophy	Mood Disorder	Adj. Disorder	Carpal tunnel	Cancer	Cerebral Palsy	Obesity
0	3	7	2	2	12	2
Brain Injury	Anemia	Anxiety Disorder	Arthritis	Asthma	Back Injury	Bi-polar
9	1	55	9	14	13	13
Cognitive Disability	Colitis	Congenital Myopathy	Restrictive Lung	Scoliosis	Obsessive Compulsive	Migrains
15	4	0	2	0	13	7
Post Traumatic Stress Disorder	Personality Disorder	Physical Dexterity	Physical Mobility	Panic/Anxiety Disorder	Psychological Disability	Writing Lang Difficulty
4	2	11	36	2	98	58
Schizoaffective Disorder	Seizures	Sleep Disorder	Stuttering	Thyroid	Auditory Perceptual	Visual Perceptual
2	7	3	2	0	3	11
Visual disability	Visual Mtr Coord	Quadraplegia	Mental	Reading Difficulty	Spina Bifida	Schizophrenia
5	1	1	1	95	2	1
Expressive Communication	Epilepsy	Borderline Personality Disorder	Cervical Adentis	Asperger's Syndrome	Chronic Pain	Bladder Problem
1	3	4	0	10	1	1
Cardiac Problem	Deaf	Borderline Intellectual Functioning	Cystic Fibrosis	Learning Disability NOS	Tourett's Syndrome	Lupus
2	1	4	2	22	3	4
Allegries	ADHD	Kidney Disease	Physical Other	Hip Injury	Other	Throid
16	152	1	6	1	71	0
Borderline Personality	Post Tramatic Disorder	Cardiac Problem	Claustrophobic Disorder	Spondylo-n-elahysed	Neurological	Respirative Disease
0	4	2	1	0	12	0
Narcolepsy	Austism	Quarduplegia	Blind	Sleep Disorder	Health One	Hand Tremors
Sleep Disorder						
4	38	1	0	3	0	1
Diagnosis In Progress	Pancreatitis	Curvature of The Spine	Neuromuscular Disorder	Celiaes Disorder	Health Impairment	Hearing Impairment
0	0	1	0	1	62	1

Data for Student Disability Services "Access-A-File"
October 19, 2010

There are:

Freshman	204
Academy Seniors	4
Graduate Students	5
Juniors	106
Masters	13
Seniors	91
Sophomore	103
Specialist Degree	1
Post Bacc	4
Students Enrolled	531

We have 130 with Vocational Rehabilitation



SCALE: 1/8" = 1'-0"

9-29-2010

- EXISTING
- EXISTING ELECTRICAL PANELS
- PROPOSED

TAYLOR CENTER AMSI 2010.14

**WESTERN KENTUCKY UNIVERSITY
OFFICE OF
EQUAL OPPORTUNITY/AFFIRMATIVE
ACTION/UNIVERSITY ADA SERVICES**

WORK REPORT

MEMORANDUM

TO: Huda Melky
Director
Equal opportunity /Affirmative Action/ University ADA Services

FROM: Sudhir Jammalamadaka
Assistive Technology Specialist
Equal opportunity /Affirmative Action/ University ADA Services

Date: 10/21/10

The Second phase of audits has been started. The table below gives a summary of the Second phase audits.

Total Departments on Campus	221
Total Audits Done	118
Audits in Queue (Processing Audits):	9
Audits Passed	109
Audits Passed & with Accessibility Statements	109

The websites in First phase audits are:

These 4 sites have new websites in plans or in rolling.

- Alumni
- Honors College
- New Website
- Physics & Astronomy

In communication with these 3 websites.

- ICSR
- FACET
- Biology