

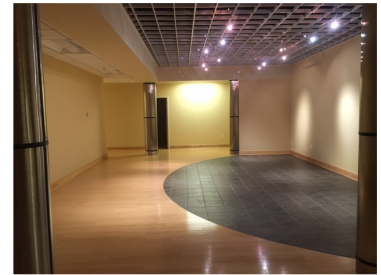
Executive Office Space Available



5,500 Square Feet

Property Features

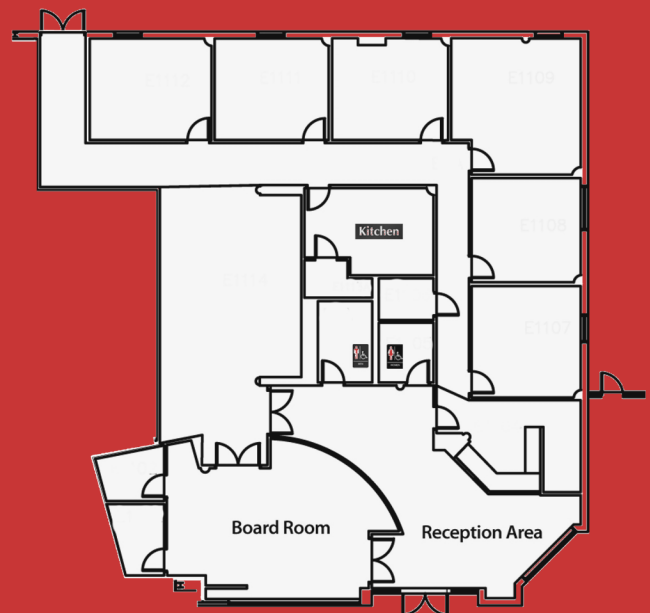
- Class A Office Space
- Single or Multiple Occupancy Offices
- Pre-Wired IT Infrastructure
- Interior and Exterior Entryways
- Exterior Windows in all Offices
- Lobby and Reception Area
- Board Room with Kitchenette
- Large Common Area
- Curbside Parking



Remarkable Office Suite for Headquarter Operations

5,500 square feet of renovated office space is available for lease. Single or multiple occupancy offices and a large common area which may be converted into cubicle space offers a flexible professional environment to meet your growing business needs. In addition to the luxury of affordable, high-end office space, the ideal tenant will have access to four (4) shared conference rooms, a teleconference center and event space. The premium suite includes a breakroom, private restrooms, data or storage closets and ample parking. Opportunities for building signage are also available.

The office space is conveniently located within four (4) miles of Downtown Bowling Green, Bowling Green-Warren County Regional Airport, Western Kentucky University, access to I-65, extended-stay hotels, childcare, retail, restaurants, mixed-use spaces, South Central Kentucky Industrial Park, two regional hospitals, multiple walk-in clinics, professional services and more.



Contact the WKU Center for Research and Development for more information or to request a facility tour.

Jeff Hook, Director, WKU Center for Research and Development
2413 Nashville Road, Suite B8, Bowling Green, KY 42101
Office: 270-901-3490 | Cell: 270-991-4944 | william.hook@wku.edu