

Western Kentucky University Senate

OFFICERS, 2018-2019

Kirk Atkinson, Chair

(kirk.atkinson@wku.edu)

Dan Clark, Vice Chair

Jason Bergner, Secretary

What is the University Senate?

The University Senate functions as the official representative voice of the faculty. It advises and makes recommendations to the University President and to the Provost/Vice President for Academic Affairs about academic requirements and policies, faculty responsibilities and welfare, and any other matters of importance to the faculty.

Voting Members of the Senate

- Each department selects one representative (2-yr term)
- Each college and library select enough *at-large* senators to make up 10% of the unit's total faculty (2-yr term)
- SGA (Student Govt. Association) has three reps (1-yr term)

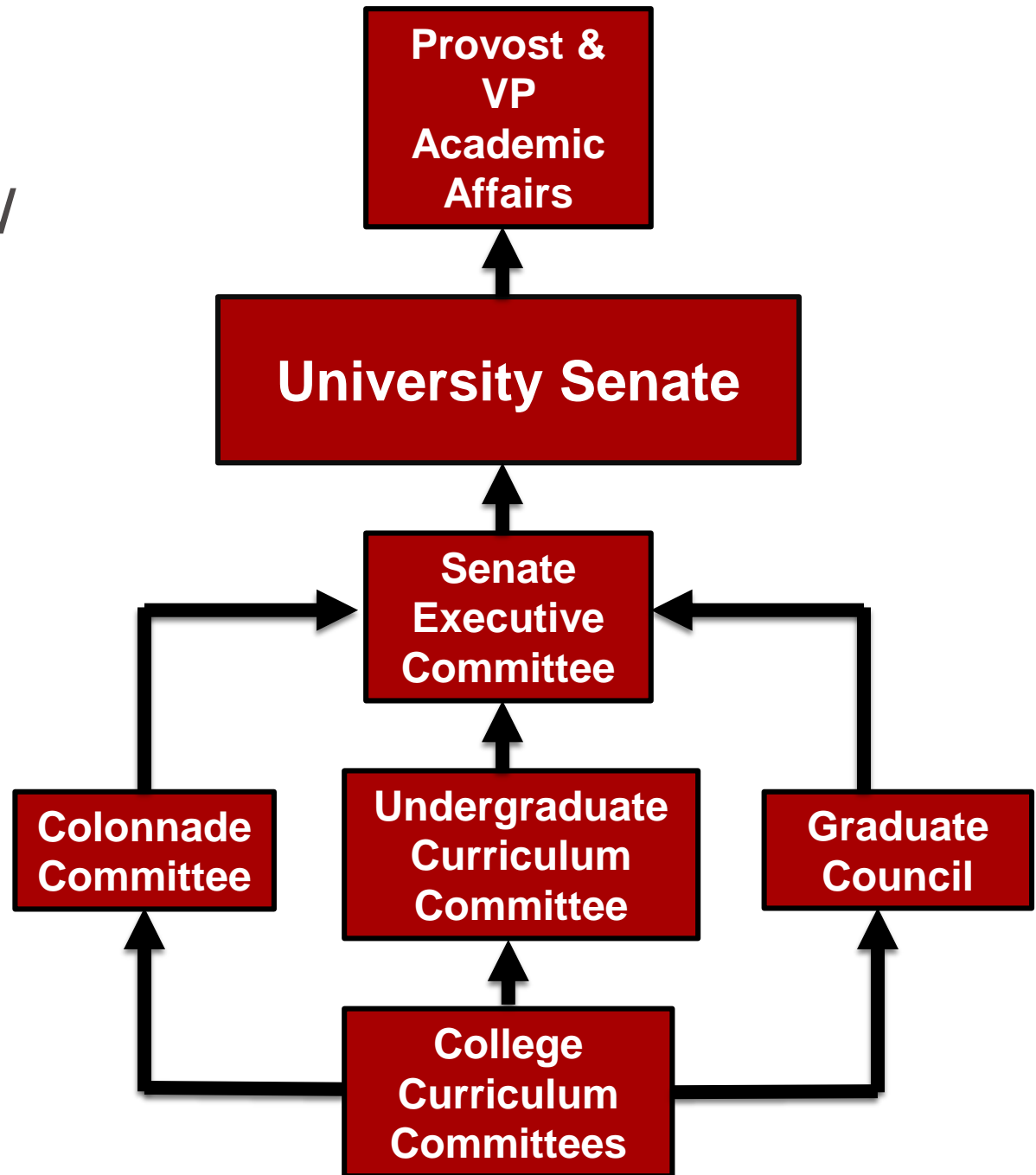
Non-Voting Advisory Members

- President of the University – Timothy Caboni
- Provost – Terry Ballman
- Academic Deans
- Dean of the Graduate School – Cheryl Davis, Interim
- Dean of the University Libraries – Susann deVries
- Faculty Regent – Claus Ernst
- Staff Council Representative – (Chair: Jennifer Miller)

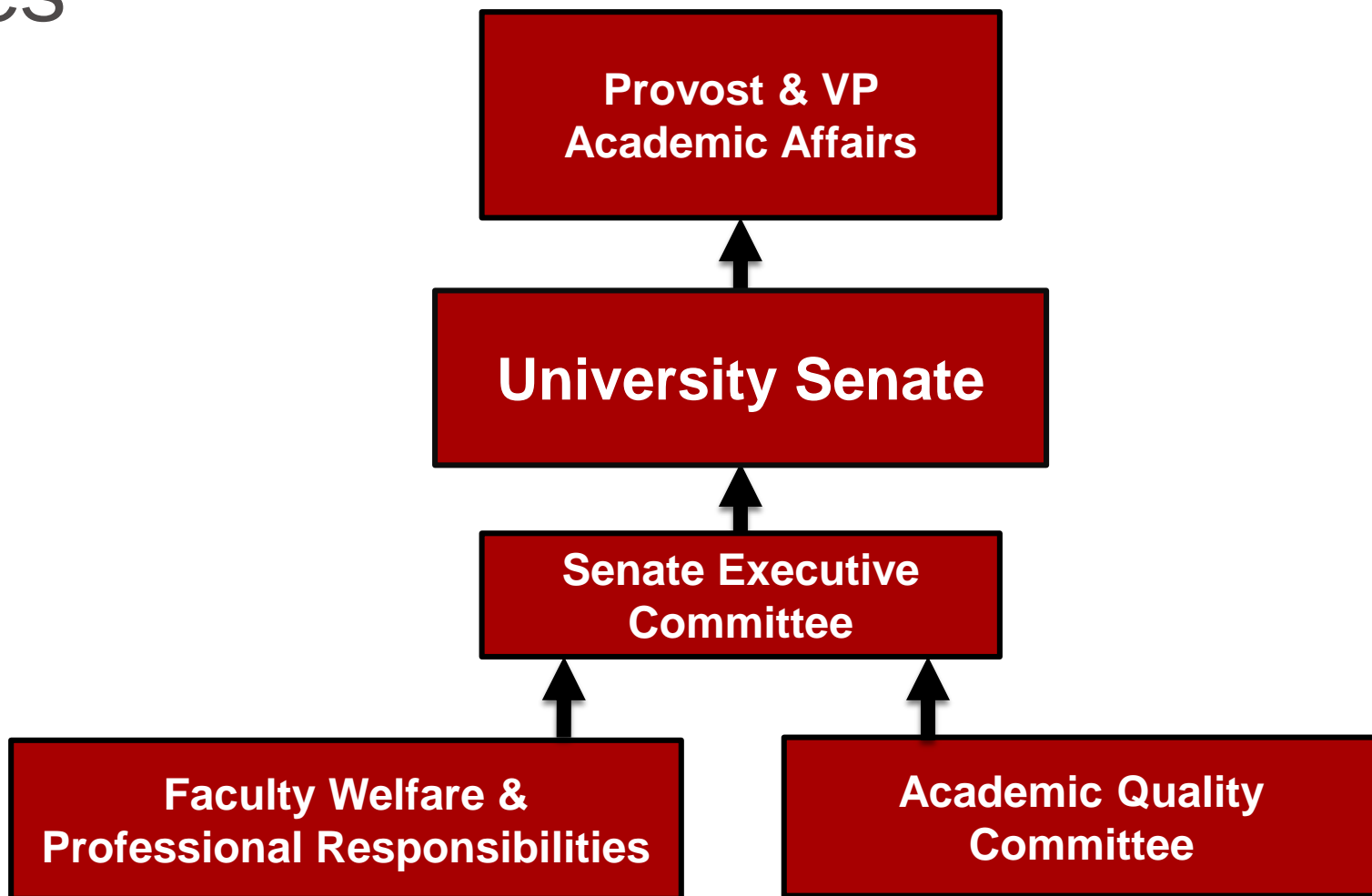
Standing Committees of the University Senate

- Senate Executive Committee (SEC)
- Undergraduate Curriculum Committee (UCC)
- Colonnade General Education Committee
- Faculty Welfare and Professional Responsibilities Committee
- Committee on Academic Quality
- Budget & Finance Committee
- Graduate Council

Curricular Work Flow



Faculty Welfare & Academic Quality Issues



Collegial System of University Governance

All faculty members shall have the opportunity to participate in university governance – either directly, by serving in the Senate or on a Senate committee, or indirectly, by electing colleagues to represent them.

Collegial System of University Governance

- Authority and responsibilities are shared among colleagues (faculty and administrators)
- Decision-making power is delegated to the group most expert or responsible
 - The faculty have primary responsibility for areas such as curriculum, subject matter and methods of instruction, research, faculty status, and those aspects of student life relating to the educational process.
 - In other areas which affect academic programs, such as the selection of the President and other administrators, the organization and structure of departments, institutional budget priorities, and the like, the appropriate faculty bodies should be consulted.

University Senate Meetings

During the academic year, the Senate meets on the third Thursday of each month (generally) at 3:45pm in the Faculty House

All meetings of the University Senate shall be open to all members of the faculty and other interested parties. Visitors shall be permitted to address the Senate at the direction of the Chair.

This is your Senate - get involved!

Important Information

Faculty Handbook (23rd edition):

<https://www.wku.edu/senate/documents/handbooks/wku-faculty-handbook-23rd-edition.pdf>

Information on items such as faculty appointments and responsibilities, promotion, tenure and continuance, post-tenure review, faculty grievance, etc.

WKU Policies website:

<https://www.wku.edu/policies/>

- The official repository for all policy and procedure documents.

Additional Links/Resources

Senate website:

<http://www.wku.edu/senate/>

Senate documents:

<http://www.wku.edu/senate/documents.php>

American Association of University Professors (AAUP) chapter –

Contact Margaret Crowder

margaret.crowder@wku.edu

Contact your Senate Chair:

kirk.atkinson@wku.edu

Contact your Faculty Regent:

claus.ernst@wku.edu