

Bass

Rose TRACK 8

Jim Snidero

$\text{♩} = 83$
INTRO A-7 Ab7 DbΔ C7alt FΔ D7

1 CHORUS 1 G-7 C7 G-7 C7

5 FΔ G-7 C7 FΔ D7alt.

9 G-7 C7 G-7 C7

13 F6 G-7 C7 FΔ C7alt. FΔ

17 C-7 F7 BbΔ

21 D-7 G7#11 G-7 A-7 D7

25 G-7 C7 Ab-7 Db7 G-7 C7#5

29

FΔ

Bb

B°

A-7



CHORUS 2

33

G-7

C7

G-7

C7alt.



37

FΔ

G-7

C7

FΔ

D7alt.



41

G-7

C7

G-7

C7



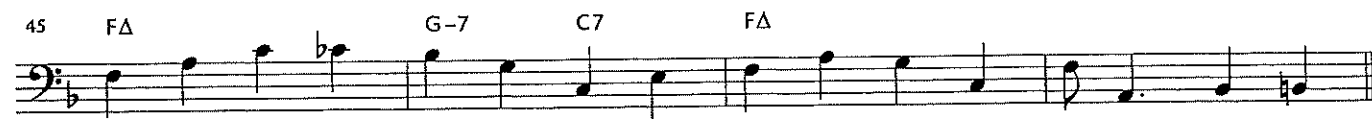
45

FΔ

G-7

C7

FΔ



49

C-7

F7alt.

BbΔ



53

D-7

G7

G-7

C7

A-7



57

G-7

C7

G-7

C7



61

FΔ

G-7

C7

FΔ#11

