

**Mammoth Cave:  
A Way to Wonder**



# CHOICE

**Program  
Guide  
for the  
Friends of  
WKU Public  
Radio and  
WKYU-PBS**

OCTOBER

WESTERN KENTUCKY UNIVERSITY  2009

WKU Public Radio



## Inspiring Stories

*From the Top* is a weekly, hour-long radio showcase of America's top young classical musicians hosted by acclaimed pianist Christopher O'Riley. Join us Sundays at 7pm C.T./8pm E.T. for music and conversations featuring these talented musicians.

Many of the young musicians featured on *From the Top* came to the United States from other countries to pursue their dreams. Here, we've



compiled highlights from some of the most memorable stories we've heard.

Violinist **Stephanie Song** hails from Shanghai, China. She came to the United States at the tender age of ten to study with the late great Dorothy Delay at the Juilliard School. "In the beginning, I didn't want to come to America," Stephanie recalls. "I had a whole family and circle of friends in China." Stephanie had a hard time adjusting to life in the U.S. at first, but her wonderful teacher helped her through. "Ms. Delay was like a grandmother to me," says Stephanie. "She helped me to love music, and through her teaching, I started to see the beauty of the music, not just the notes." These days Stephanie is grateful she came to the U.S. to study music. "Back in China we are very disciplined, but when you come to this country the whole environment is inspiring," she says. "I learned to be more creative here. There are all sorts of opportunities to see and open and your eyes and perform."

*(Cont. on pg.2)*



## TAKE ME OUT TO THE BALL GAME

### Talk of the Nation's Neal Conan's love of baseball.

Neal Conan, host of NPR's *Talk of the Nation* (broadcast weekdays at 1pm C.T./2pm E.T. on WKU Public Radio) discovered the game of baseball through the earpiece of a cat's hair whisker radio that was broadcasting the voice of the New York Yankees. The year was 1956. Conan was six-years-old and had received the build-it-yourself crystal set as a present. To tune the primitive radio, he'd use a wire that resembled a cat's whisker - thus the name. He could only tune in certain parts of the AM dial, but the signal from Yankee Stadium came in strong, and Conan was hooked. It is the first year he remembers caring about the World Series. He played baseball all the time in the neighborhood. As he puts it, "the game was everywhere."

Just as baseball emerged through radio in Conan's childhood, it was again through radio that he immersed himself in the game later in life. During the summer of 2000, he took a leave of absence from NPR to become the play-by-play announcer for the Aberdeen Arsenal, a professional baseball team associated with the independent Atlantic League and based in Aberdeen, Maryland. Why did he do it? In addition to being a lifelong fan of the game, Conan candidly explains that he was a little bored with himself and needed a challenge. Although he recognizes that he didn't stray too far afield (no pun intended) as he moved from radio studio to announcer's booth, he found that his rookie season with the Arsenal brought him back to his early days in radio. He remarks, "most of us get our starts at small stations - at least I sure did - where one of the great parts of radio is" *(Cont. on pg.3)*

WKYU-PBS

## Mammoth Cave: A Way to Wonder

This hour-long documentary relates the remarkable history of Mammoth Cave National Park. These are tales of exploration and discovery beginning with pre-historic Native Americans thousands of years ago. Why were these people willing to brave the darkness with only cane reed torches and woven slippers? Why did African-American slave guides stay in the area and continue to lead tours even after they had been set free? These stories and many others are unearthed on this journey into Mammoth Cave National Park. WKYU-PBS was given unprecedented access to parts of Mammoth Cave that few have seen. Getting equipment and personnel into these surroundings proved to *(Cont. on pg.5)*



Dear Friends,

Oct 2009

I hope you've had a chance to listen to some of our new daytime programs. Over the years many of you have told us how much you value our news and information programs—we're pleased to be able to bring you this lineup of varied and interesting shows.

Of course some listeners are unhappy about the changes. Many regret the loss of classical music during the day. Others expressed the concern that we're inundated with too much talk already, and that the last thing we need is more of it. Public radio news programs, however, are rightly praised for their thoughtful tone and intelligent content. Shows like *Morning Edition* and *Fresh Air* are unlike anything else on radio, and we're fortunate to be able to offer these and other excellent programs each day. Combined with our strong local news presence, we believe our new lineup offers something unique to our coverage area.

Of course many listeners have expressed their support for the new program schedule, too. Happily, the vast majority of comments we've received so far have been respectful and constructive, which says a lot about you, our listeners.

This issue of *Choice* looks a bit different. Changes in postal regulations and changes in printing companies have required us to make some alterations. This is a *Work In Progress*. And finally, our annual Fall Membership Drive is coming up in October. If you're membership is due for renewal, we encourage you to keep your support active. It's what keeps this radio station running.

Sincerely,



Peter Bryant - Station Manager

## Lee's CD Review

School's in session. The accent seems to be on youth, not only in academe but on stage. There was a recent collaboration of the Cincinnati Pops, Erich Kunzel, and the popular showcase for promising young talent, "From the Top". Youth orchestras and concerto competitions for high schoolers and younger are proliferating.

Rapidly rising in the musical firmament is sixteen-year-old violinist Caroline Goulding. She has already won hearts and critics with her virtuosic, freshly youthful approach to the repertoire.

Goulding appears on a new Telarc disc (CD-80744), where she samples a range wide enough to embrace Fritz Kreisler, Corigliano's "The Red Violin", Paul Schoenfield's "Four Souvenirs for Violin and Piano", some Henri Vieuxtemps, a dash of Gershwin's "Porgy and Bess", and even a punch of seasoned Cape Breton fiddling.

Her freshness, confidence, radiant technique and disarming optimism have won her solo spots with the



Cleveland Orchestra, Cleveland Pops, Detroit Symphony, Buffalo Philharmonic and Cincinnati Pops. Awards include first prize of the Aspen Music Festival Concerto Competition at age thirteen.

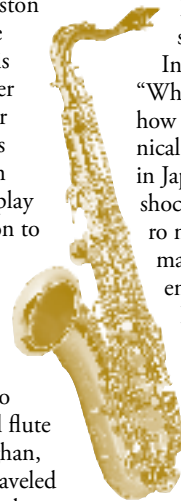
Goulding plays a 1617 Amati violin, originally owned by Beethoven's one-time patrons, the Lubkowitz family. Caroline Goulding takes us into a fearless future fronted by if not legions, hundreds of very promising and visionary young musical stars.



## Inspiring Stories

(Cont. from pg.1)

Tin whistle player **Eoghan Conway**'s family immigrated from Ireland to the Boston area when he was five years old. He has a very large family, and all of his siblings play music (younger brother Oisin, a violinist, joined his brother on *From the Top*). "At my house, it's pretty much chaos trying to find an empty room and a music stand to play with," describes Eoghan. In addition to playing traditional Irish music on his tin whistle, Eoghan plays classical flute. "All Irish musicians tap their feet when they play because the music is for dancing, and if you don't tap, you'll play too fast, so when I first started playing classical flute my teacher was always saying, 'Eoghan, stop tapping your feet!'" Eoghan traveled to his home country to compete in the All-Ireland Tin Whistle competition and took home first prize!



Percussionist **Yi Wei**'s heritage is Chinese, but her family lives in Chicago, Illinois. She has wonderful childhood memories of playing music with her family. "My grandfather was a violinist and he taught his sons and he also taught me," says Yi. "As immigrants in the United States we were street musicians in the city of Chicago. Every day after school or in the summer during the day we would play on Michigan Avenue or the boardwalks of Lake Michigan, and that's how we earned money for the family, but it was fun and it didn't ever feel like working. That's why they call it 'playing'

music!" Yi feels that her perseverance and strength as a musician comes from a combination of her combined Chinese and American roots. "My Chinese side gives me the fortitude to go through tough times, and my American side gives me a creative edge," she says. "I've gotten the best of both worlds."

Back in Tokyo, saxophone player **Keitaro Harada** was entirely self taught. He didn't study with a teacher until he enrolled at Interlochen Arts Academy in Michigan. "When I started at Interlochen I only knew how to play ballads, and I really had no technical skills at all," he says. Leaving his family in Japan to come to Interlochen was a culture shock on several levels, but what struck Keitaro more than anything was the presence of so many girls. "I'd gone to all-boys schools my entire life," he says. "The first impression I had when I came to Interlochen was, 'Wow, there are girls everywhere... I love this school!'"

Hailing from Poland, violinist **Ania Filochowska** recently moved to New York City to study under the great violin virtuoso Itzhak Perlman at the Juilliard School. She came to the U.S. with her mother and two older brothers who are also violinists, and her father will soon join them too. Ania's dream was to study under Itzhak Perlman, but when she originally flew to America for her Juilliard audition, she was dismayed to find out he was not going to be there to hear her play. Ania decided to take matters into her own hands. "I emailed Mr. Perlman's wife to ask her if I could play for Mr. Perlman," says Ania. "She invited me to audition at their house." Ania misses her friends in Poland, but feels certain it was the right decision to come to America. "I like the Juilliard School and I love Mr. Perlman, my teacher," she says.

Orchestra Kentucky

BOWLING GREEN  
JEFFREY REED | MUSIC DIRECTOR

## 10th Anniversary Gala

Featuring:

### The 5th Dimension

The 5th Dimension joins Orchestra Kentucky in a cabaret-style dinner concert in celebration of ten years of great music-making.

Saturday, October 17, 2009

Sloan Convention Center

Cocktail reception 5:30 p.m.

Dinner 6:15 p.m. / Concert 8:00 p.m.

Sponsored by The Encore and Carol & Denny Wedge

Co-sponsored by Dr. Robert & Pat Goodwin, Vicki & Dan Renshaw

Additionally sponsored by First Choice Home Medical.

270.846.2426

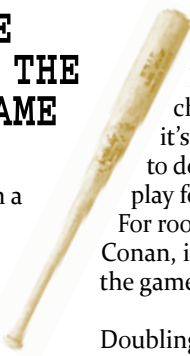
www.OrchestraKentucky.com

# TAKE ME OUT TO THE BALL GAME

(Cont. from pg.1)

that you do it yourself. In a way, it was so nice to get back to schlepping my own equipment, being my own producer, and just getting back to an elemental level of radio."

The Atlantic League could also be considered elemental. Uncorrupted by money, as many believe today's Major League to be, the independent Atlantic League is largely made up, according to Conan, of "the unlucky, the guys who are a step slow or a couple of mph short on that fast ball. There are as many reasons why they continue to do it as there are guys in the league." He observes that the Atlantic League is filled with washouts from the majors, guys who



have just been cut at age 27 or 28 and are looking for a second chance. It could be that it's all that they know how to do, or maybe they just play for love of the game. For rookie announcer Neal Conan, it was clearly for love of the game.

Doubling as announcer and anthropologist of unaffiliated baseball in 2000, Conan filed a series of commentaries for *Morning Edition*. He called the series "Play-by-Play" and covered a range of topics including the rhythm of baseball, the social function of road trips, a team's batting slump, and a historic stadium. As announcer, he traveled on the team bus, ate at fast food restaurants, slept in roadside motels, and set the stage and called the action for 140 games, home and away. His experiences are also recounted in his Crown Books

publication, *Play by Play: Baseball, Radio And Life In The Last Chance League*.

Back in his office at NPR, Conan still lights up when he talks about baseball. He subscribes to at least two baseball magazines, has run a baseball segment on *Talk of the Nation*, and warmly admits that Mickey Mantle is still his hero. When asked for his favorite baseball play, he processes briefly and then becomes the announcer again:

"Mid to early September of 1973. The Mets were playing the Pittsburgh Pirates in the fourth game of a five game series. If the Mets were to challenge the Pirates that year, they had to win four out of the five games. They lost the first game when [pitcher] Tom Seaver got beat in Pittsburgh, but then won the next three. Seaver was playing again the following day and everyone knew, at that point in his career, that you never beat Tom Seaver twice in a row. The Mets were going to win that game, but if they won the game this night it would tell the difference and vault them into first place with the Pirates. I was a 13-inning game filled with import, omens, and drama, but the great play was this: Richie Zisk was on first base. He's the guy from Brooklyn who played for the Pirates, a lead-footed first baseman. He had gotten a single and was on first base when a ball was driven to the left field fence at Shay Stadium. Cleon Jones turned his back to the infield and positioned himself perfectly as the ball caromed off of the top of the fence, maybe half an inch short of being a homerun. Jones caught it on the fly as it rebounded, whirled, and threw it to the cutoff man who was Red Garrett, a notoriously scatter-armed infielder for the Mets, who, go figure, threw a perfect strike to Jerry Grote at home plate. Grote then applied the tag to an amazed Richie Zisk as he chugged around third base and slid for home. And that is the greatest play I have ever seen in my life."

Somewhere in America, there's a kid with a hand-built radio who's just discovered baseball.

# Transmitter Upgrade for WDCL



**On** September 1st we installed some major upgrades to our WDCL-FM transmitter in Somerset (89.7FM). Gilbert Houshright of Broadcast Electronics (pictured above) along with Mike Graham and Radio Chief Engineer Chris Scott spent many hours installing a retrofit of the 1985 model transmitter's controller. This will improve the stability, reliability, and quality the WKU Public Radio signal there. Now if we can just keep wildlife from eating through the fence...



PROGRAMING AT A GLANCE					OCT 2009	
CT	MONDAY	THROUGH	FRIDAY	SAT	SUN	ET
4				Music in the Morning		5
6				Weekend Edition		8
7				Weekend Edition		9
8				Weekend Edition		10
9	On Point with Tom Ashbrook	wait... wait... don't tell me!	CarTalk	Marketplace Money		11
10	Fresh Air — with Terry Gross	The Thistle & Shamrock	St. Paul Sunday		NOON	
NOON	Here & Now			Banana Peel	Banana Peel	1
1	Talk of the Nation & Science Friday			American Routes	A Prairie Home Companion	2
2	ALL THINGS CONSIDERED			All Things Considered		3
3	BBC NEWS			A Prairie Home Companion	Old Scratchy Records	4
4	Fresh Air — with Terry Gross			Jazz Avenue with Pete Kirchoff	TOP	5
5	PERFORMANCE TODAY			Piano Jazz	An Evening with the Pops	6
6	Classical Music			Riverwalk	Classical Music	7
7	Classical Music			Jazz After Hours	Classical Music	8
8	Classical Music			Jazz After Hours	Classical Music	9
9	Classical Music			Jazz After Hours	Classical Music	10
10	Classical Music			Jazz After Hours	Classical Music	11
11	Classical Music			Jazz After Hours	Classical Music	12
12	Classical Music			Jazz After Hours	Classical Music	1

WKYU88.9 Bowling Green/Glasgow

WKPB89.5 Henderson/Owensboro

WDCL89.7 Somerset/Campbellsville

WKUP90.9 Elizabethtown/Bardstown

SUPPORT PUBLIC RADIO

# WKU PUBLIC MEDIA STAFF

Dr. Robert Owen - Vice President for Information Technology  
Jack Hanes - Director of Educational telecommunications

## FULL-TIME PROFESSIONALS

Lisa Autry	News Producer/Announcer
Jordan Basham	Associate Producer/Director
Cheryl Beckley	Producer/Director
Dorin Bobarnac	TV Engineer
David Brinkley	Sr. Producer/Director
Peter Bryant	Station Manager/Program Director
John Campbell	Operations Manager
John Coe	CATV Engineer
Joe Corcoran	News Producer
Sam Cosby	Corporate Support Officer
Erik Costa	TV Engineer
Kaneia Cummings	Business Manager
Justin Davis	Operations Manager
Barbara Deeb	Host/Producer
Dana Divine	Assistant Program Manager
Linda Gerofsky	Station Manager
Carmen Herrera	Graphic Artist
Kathy Jimerson	TV Traffic Supervisor
Clayton Miller	Music Producer/Announcer
Dan Modlin	News Director/Assoc. Manager
Joshua Niedwick	Assoc. Producer/Director
Linda Oldham	Program Manager
Denis Quinn	Chief Engineer
Terry Reagan	Director of Development
Christopher Scott	Radio Chief Engineer
Jean Secrest	Corporate Support Officer
Kimberly Sowders	Membership Associate
Lee Stott	Music Director
Kevin Willis	Assistant News Director
Mary Younger	Office Associate

## PART-TIME STAFF

Craig DeHut	Videotape Librarian
Tom Foster	Graphic Artist
Jessica Gibbs	Production Assistant
Michael Graham	Field Engineer, Somerset
Greg Happel	Field Engineer, Elizabethtown
Rafe Heltsley	Webmaster
David Lee	Guest Host
Lucinda McCaleb	Master Control Operator
Dale McCubbins	Announcer
Ann Potter	Receptionist/Traffic Assistant
Ed Thomas	Field Engineer, Henderson-Owensboro

## STUDENT STAFF

Hannah Kirk	Student Worker
Brent Boyens	Production Crew Chief
Nathan Haynes	Student Engineer
Rebecca Wittman	Traffic Assistant

## MASTER CONTROL OPERATORS

Hope Chapman	Mark Mehlbauer
Charlie Harris	Bradley Morgan
Keith Kinder	Sam Phillips
Kyle McCafferty	

## STUDENT PRODUCTION ASSISTANTS

Bentley Blair	Eric Perry
James Bodden	Caitlin Richard
Zaac Christopher	Joshua Stewart
Joe Gibbs	Beth Truax
Katie Gibbs	Jessica Vonderheide
Quinn Haste	Kim Walsh
Jodi Hitchell	Anna Williams
Bryce Howard	Brian Winner

## VOLUNTEERS

Dave Baxter	BRB Host
Charolette Blankenship	Development
Erika Brady	BRB Host
Dick Cantrell	Economics Analyst
Martha Haynes	Development
Pam Kieilty	Development
Cheryl Kirby-Stokes	Development
Susie Likes	Development
Elizabeth Oppitz	Development
Nolan Porterfield	Old Scratchy Records host
Sue Robinson	Development
Barbara Threlkel	Development
Michael Trapasso	Meteorologist

## HELP WANTED!

Volunteers have an important role at WKU Public Media. From putting labels on CHOICE to answering phones during our membership drives, WKU Public Radio and WKYU-PBS need your help. Add your name to our volunteer list by calling 800-599-9598, or send an email to our volunteer coordinator [kim.sowders@wku.edu](mailto:kim.sowders@wku.edu)  
**THANK YOU!**

# UNDERWRITERS

**Our thanks to the underwriters listed on this page for their support. Underwriting and membership support make all of our programs possible. Please pass along your thanks to these businesses. If you would like to join our list of supporters, contact us at 1-800-599-WKYU.**

American Bank and Trust  
AT&T Kentucky  
Bandy Bedding  
Bank Of Ohio County  
Barnes and Noble  
Bell, Orr, Ayers & Moore  
BGMU  
Bluegrass Cellular  
Calvert Spring Water Company  
Campbellsville University  
Caslin, Cecil & Holtrey  
Coldwell Banker Legacy R.E.  
Cole & Moore  
Colonial House Furniture, Inc.  
D. Bruce Orwin  
Dance Images  
Danhauer Drugs & Health Equipment  
Diamond Caverns  
Dr. Dennis O'Keefe  
Dr. Mark Lowry  
English Lucas Priest & Owsley, LLP  
Farm Bureau Insurance

Farmers National Bank  
Flora Templeton Stuart  
Glasgow EPB  
Graves-Gilbert Clinic  
Greenwood Mall Self Storage  
Hardin County Honda  
Harlin Parker  
Harrison & Goin Attorneys  
Henderson County Public Library  
Holiday Inn University Plaza  
Inkjet Express  
Jeanette Rayles/Raymond James  
Kentucky Monthly  
Kerrick Stivers Coyle & Van Zant  
KY Commerce/ArgiTourism  
KY Historical Society  
Lindsey Wilson College  
Luxury Imports of Bowling Green  
Matt Idlett/Edward Jones  
McDonald's  
Midway College  
Norlight Inc.  
Ohio County Tourism Commission  
Orchestra Kentucky

Owensboro Museum Science and History  
Owensboro-Daviess County Convention & Visitors Bureau  
Parker Agency  
Phil Sansom/Edward Jones  
Presbyterian Church  
RDI  
Red Pixel Studios  
RiverPark Center  
RossTarrant Architects  
Service One Credit Union  
SMR  
Somerset-Pulaski Convention & Visitors Bureau  
South Central Kentucky AHEC  
Sullivan, Mountjoy, Stainbeck & Miller  
The Bistro  
The Depot Bar & Grill  
The Vision Group USA, LLC  
The Woodworks  
TVA  
Vanderbilt Medical Ctr  
Wachovia Securities, LLC

Warren County Medical Society  
Warren RECC  
Western KY Diagnostic Imaging  
Whitaker, Lawless, McIntyre  
Whites & Heintzman  
Wilson & Company  
WKU Alumni Affairs  
WKU Center For Gifted Studies  
WKU DELO  
WKU Department of Forensics  
WKU Department of Music  
WKU Doctoral Studies  
WKU Health Services  
WKU IMREC  
WKU Physics & Astronomy



A FILM BY KEN BURNS  
**THE NATIONAL PARKS**  
 America's Best Idea

**ABOUT THE SERIES:** More than 6 years in the making...amidst grizzly bears, buffalo, antelope, alligators and egrets... upon glaciers, geysers, lakes and deserts...encountering nature in its most beautiful and extreme.



**OCT. 6TH - 8PM EPISODE ONE**

**The Scripture of Nature (1851 – 1890)** The astonishing beauty of Yosemite Valley and the geyser wonderland of Yellowstone give birth to the radical idea of creating national parks for the enjoyment of everyone; John Muir becomes their eloquent defender.

**OCT. 13TH - 8PM EPISODE TWO**

**The Last Refuge (1890 – 1915)** By the end of the 19th century, widespread industrialization has left many Americans worried about whether the country — once a vast wilderness — will have any pristine land left. At the same time, poachers in the parks are rampant, and visitors think nothing of littering or carving their names near iconic sites like Old Faithful. Congress has yet to establish clear judicial authority or appropriations for the protection of the parks. This sparks a conservation movement by organizations.

**OCT. 20TH - 8PM EPISODE THREE**

**The Empire of Grandeur (1915 – 1919)** In the early 20th century, America has a dozen national parks, but they are a haphazard patchwork of special places under the supervision of different federal agencies. The conservation movement pushes the government to establish one unified agency to oversee all the parks, leading to the establishment of the National Park Service in 1916.

**OCT. 27TH - 8PM EPISODE FOUR**

**Going Home (1920 – 1933)** While visiting the parks was once predominantly the domain of Americans wealthy enough to afford the high-priced train tours, the advent of the automobile allows more people than ever before to visit the parks. Some park enthusiasts begin “collecting” parks, making a point to visit as many as they can. In North Carolina, a campaign is launched to protect the last strands of virgin forest in the Smoky Mountains by establishing it as a park.

**NOV. 3RD - 8PM EPISODE FIVE**

**Great Nature (1933 – 1945)** To battle unemployment in the Great Depression, Franklin D. Roosevelt creates the Civilian Conservation Corps, which spawns a “golden age” for the parks through major renovation projects. Congress narrowly passes a bill to protect the Everglades in Florida as a national park — the first time a park has been created solely to preserve an ecosystem, as opposed to scenic beauty. As America becomes entrenched in World War II, Roosevelt is pressured to open the parks to mining, grazing and lumbering.

**NOV. 10TH - 8PM EPISODE SIX**

**The Morning of Creation (1946 – 1980)** Following World War II, the parks are overwhelmed as visitation reaches 62 million people a year. A new billion-dollar campaign — Mission 66 — is created to build facilities and infrastructure that can accommodate the flood of visitors. In the late 1970s, President Jimmy Carter creates an uproar in Alaska when he sets aside 56 million acres of land for preservation — the largest expansion of protected land in history.



**Mammoth Cave:  
 A Way to Wonder**

*(Cont. from pg.1)*

be a difficult challenge. There are areas of the cave where power is not available, so battery-operated lights were carried in and used. Special consideration had to be given to the impact that the crew could make on the cave environment, so we made certain to leave nothing of ourselves behind. What we got in return are some of the most extraordinary images we've ever produced. **Mammoth Cave: A Way to Wonder** is a captivating production that will enable the audience to discover Mammoth Cave National Park in a unique way. *Airs Sunday, October 4th at 8 p.m. and again at 9 p.m.*



# THIS MONTH ON NATURE

## SHARKLAND

OCT. 3RD & 4TH

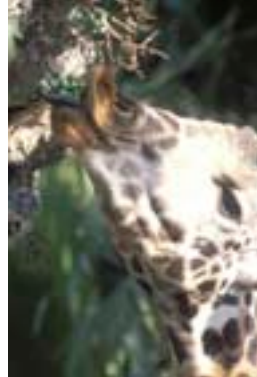
In a stretch of the Atlantic Ocean off the coast of Southern Africa, a unique pattern of warm and cold currents brings together an astounding variety of sharks. Roughly 140 species of all colors, shapes and sizes gather there - including pajama sharks, leopard cat sharks, seven-gill cow sharks and the great white.



## THE QUEEN OF TREES

OCT. 10TH & 11TH

The story of the sycamore fig and its tiny pollinator describes one of the most remarkable symbiotic relationships in the natural world - between a tree and a wasp. It is a triumph of co-evolution, told for the first time in a way that combines intricate detail with the grandness of Africa.



## LIFE IN DEATH VALLEY

OCT. 17TH & 18TH

It is a visual wonderland, where imposing mountains rise almost two vertical miles above sprawling salt flats, and canyons are painted in strokes of blue, pink, violet and green from sunrise to sunset. This is Death Valley - one of the most inhospitable places on the planet. Nowhere else is a landscape so exquisite yet brutal, stunning yet harsh. Here, temperatures spike into the 130s, the earth cracks like broken clay and when the hot wind blows, all anyone can taste is dust and salt. Ironically, it is water that has shaped this super-arid home of true survivors. (Cont. on pg.7)

# THIS MONTH ON NOVA



## IS THERE LIFE ON MARS?

OCT. 7TH & 11TH

More than four years after they landed on Mars, NASA's twin robot explorers, Spirit and Opportunity, have lasted 16 times longer and driven 20 times farther than expected. Along the way, they've endured the worst Martian storm ever recorded and survived near-fatal software glitches, a broken wheel and hair-raising climbs and descents on steep slopes. And since May 25, 2008, they've had new company on the red planet: NASA's Phoenix probe, which dramatically "tasted" water ice on the planet in July. NOVA "Is There Life on Mars?" showcases the latest scientific results from the rovers and Phoenix, which are poised to reveal

provocative new clues in the tantalizing search for water and life on the Red Planet.

## ARCTIC DINOSAURS

OCT. 14TH & 18TH

How is it that dinosaurs managed to survive and even thrive in the gloom of the dark and frigid polar regions? This is one of today's most intriguing, little-known enigmas in paleontology. Now, a unique field expedition, covered exclusively by NOVA, sets out for Alaska's North Slope to defrost a jackpot of new fossil clues. With the help of stunning computer-generated imagery, NOVA breathes life into the polar dinosaurs' lives and environment in vivid detail. The researchers combine extreme engineering and perilous fossil hunting, including digging a tunnel into the permafrost in order to collect the dinosaur bones. With Alaska's spectacular wilderness as a backdrop, "Arctic Dinosaurs" reveals a pre-

historic lost world for the first time on television.

## GHOST IN YOUR GENES

OCT. 21ST & 25TH

In a provocative report from the frontiers of biology, NOVA explores new findings that call into question the long-held belief that all inherited traits are passed on by our genes. The fast-growing field of epigenetics investigates hidden influences that could affect not only our health today but that of our descendants far into the future. It now seems that our environment makes small chemical changes to our DNA without affecting the gene's overall makeup. To put it another way, epigenetics adds to our DNA another layer that acts as a control system of "switches." Experiential factors such as nutrition or stress may trigger these switches and turn genes on or off. These subtle changes can then be "remembered"

and passed on from generation to generation, altering inherited traits. This means the lives of our grandparents — the air they breathed, the food they ate, even the things they saw — could have directly affected us, and that what we do could, in turn, affect our grandchildren. NOVA explores this fascinating new idea, interviewing top scientists in the field and following what could be a para-



digm shift in the way we think about inheritance and genes.

## SPUTNIK DECLASSIFIED

OCT. 28TH & NOV. 1ST

The world changed on October 4, 1957, when the U.S. public heard the shocking news that the Soviet Union had success-

fully launched the first satellite, Sputnik I. Why didn't the U.S. beat the Soviets in this first crucial round of the space race? NOVA reveals an astonishing behind-the-scenes story of the politics and personalities that collided over the earliest efforts to get America into space long before the founding of NASA. Anticommunist witch-hunts drove some of the nation's most talented rocketry pioneers out of the country even as we welcomed Werner von Braun and his former Nazi colleagues. With help from Walt Disney, von Braun's vision of future space travel swiftly captivated U.S. TV watchers. But even as he became the first media star of the space age, von Braun's attempts to build space probes were hobbled by inter-service rivalries. NOVA details the previously untold story of the technological and political missteps that made the U.S. lose out to the Soviets' bleeping electronic basketball.

**NOVA AIRS WEDNESDAYS AT 8 P.M. & SUNDAYS AT 10 A.M.**



(Cont. from pg. 6)

**THE GOOD, THE BAD, AND THE GRIZZLY - OCT. 24TH & 25TH**

Once on the edge of extinction, grizzlies have made a remarkable recovery. But this fierce predator is no longer content foraging in the back country. Today, bears are everywhere. This film tells the story of a great conservation success story - the rescue of the once all-but-extinguished grizzly population of Yellowstone - and how that success has spawned a complex web of new social and environmental problems for our most beloved national park and the people who live near it.

**VIOLENT HAWAII OCT. 31ST & NOV. 1ST**

Hawaii's breathtaking beauty was forged in fire, created by the awesome power of volcanoes on land and in the sea, by earthquakes and tsunamis, natural wonders that continue to shape the islands today. Shot in high definition by a team of award-winning filmmakers who live on the islands, this spectacular film features volcanic eruptions, rivers of molten lava, monster waves, humpback whales and perhaps most surprising of all, snow. **NATURE AIRS SATURDAYS AT 8 P.M. AND SUNDAYS AT 12 NOON.**



**Ask This Old House**

**HAMMERS AWAY AT HOME IMPROVEMENTS NATIONWIDE**



Neglecting that drafty window? Don't want to pay a contractor to fix a leaking pipe? *Ask This Old House* just might have the solution you've been searching for. The show's experts are once again traveling the country to help puzzled homeowners tackle all sorts of common household problems. The eighth season of *Ask This Old House*, featuring 26 brand-new episodes, premieres on WKYU-PBS Friday, October 16 at 6:30 p.m.



This season, the crew is making *House* calls all across the country, with stops including Baltimore, Detroit, Tampa and Houston. So, whether you're plumbing in Pittsburgh or landscaping in Los Angeles, submit your questions at [www.thisoldhouse.com/askaquestion](http://www.thisoldhouse.com/askaquestion) and you may hear the experts knocking on your door. In addition to traveling across the United States, *Ask This Old House* continues to help people near the show's home base of Boston, and the entire New England region, find solutions to their DIY problems.

**OCT 09 WKYU TV SCHEDULE** Program details at [www.wkyupbs.org](http://www.wkyupbs.org)

	MONDAY	TUESDAY	WEDNESDAY	THURSDAY	FRIDAY	SATURDAY	SUNDAY
7:00	Seemore's Playhouse/College Telecourses					Wishbone	Market to Market
7:30	Peep and the Big Wide World/College Telecourses					Dragon Tales	Moneytrack
8:00	Sesame Street					Curious George	Religion & Ethics Newsweekly
8:30						Angelina Ballerina	Outlook with Barbara Deeb
9:00	Curious George					Wunderkind Little Amadeus	Rick Steves
9:30	Barney & Friends					Clifford The Big Red Dog	Burt Wolf
10:00	Arthur					Bob the Builder	NOVA
10:30	Fetch! With Ruff Ruffman					David Elson Show	
11:00	Clifford The Big Red Dog					Katie Brown	Specials
12:00	Dragon Tales					For Your Home	Nature
12:30	Power Yoga: Mind and Body					Paint, Paper and Crafts	
1:00	Healing Quest	Classical Stretch	Simple Living/Healthy Body	Classical Stretch	Second Opinion	Knitting Daily	
1:30	Sewing with Nancy	This Old House	The Victory Garden	Donna Dewberry	The Best of the Joy of Painting	Sewing with Nancy	The Victory Garden
2:00	Chef's Story	America's Test Kitchen	Joanne Weir's Cooking Class	Everyday Food	Caprial and John's Kitchen	Martha's Sewing Room	MainStreet
2:30	Electric Company					Fons & Porter's Love of Quilting	Antiques Roadshow
3:00	Between the Lions					P. Allen Smith's Garden Home	History Detectives
3:30	Curious George					Garden Smart	
4:00	It's a Big Big World					New Flyfisher	
4:30	Caillou					Woodwright's Shop	Ancestors
5:00	Saddle Club					Woodsmith Shop	Market to Market
5:30	BBC World News					Classic Gospel	Openroad
6:00	Worldfocus						Roadtrip Nation
6:30	Motorweek	Katie Brown Workshop	P. Allen Smith's Garden Home	Garden Paths	Hometime	History Detectives	BBC World News This Week
7:00	New Yankee Workshop	This Old House	The Victory Garden	David Elson Show	Ask This Old House	World Business	
7:30	The NewsHour with Jim Lehrer					MainStreet	Specials
8:00	Rick Steves	National Parks: America's Best Idea	NOVA	Antiques Roadshow	Masterpiece	Nature	Experience America
8:30	Burt Wolf		From the Top	Southern Accents			Ride of Our Lives
9:00	New York Wine & Table		Treasures in Your Attic	New York Wine & Table		Austin City Limits	Classic Gospel
9:30	Great Getaways	Charlie Rose					Visionaries
10:00						Masterpiece	Outlook
10:30	To the Contrary	Foreign Exchange	European Journal	Outlook with Barbara Deeb	Scully! The World Show	John McLaughlin's One on One	
11:00	Western News						

Hi everyone,

The big news this month is a new high-definition documentary produced by WKYU-PBS, **Mammoth Cave: A Way to Wonder**. This exciting new program, premiering Sunday, October 4<sup>th</sup> at 8 p.m., will take you places in our very own national park that you've never been before. There's also a special **sneak preview event** for this gorgeous program on Sunday, September 27<sup>th</sup> at 3 p.m. in WKU's Mass Media and Technology auditorium, so please join us for that.

Our Mammoth Cave documentary is a companion to a ground-breaking new national PBS series, **The National Parks: America's Best Idea**, a six-part series directed by Ken Burns. The National Parks series, which premieres on October 6 at 8:00 p.m., will also feature a short segment on Mammoth Cave National Park. (In fact, when the Burns crew was here several years ago, some of our student production crew members assisted on that shoot.)

If you're a WKU football fan, WKYU-PBS is broadcasting an unprecedented number of games this season, including some key Sun Belt Conference matchups of teams WKU will face. Don't miss **WKU @ Middle Tennessee, live from Murfreesboro at 2:30 p.m. on October 24<sup>th</sup>**, followed by **WKU at North Texas, live from Denton, TX at 3:15 p.m. on October 31<sup>st</sup>**. Other SBC games will air delayed at 10 p.m. on Saturdays.

And for all the inside scoop on the team, highlights, interviews and more, tune in for the David Elson Show every week, Thursdays at 6:30 p.m. and again on Saturdays at 10:30 a.m.

And if you've got some home improvement projects on your to-do list this fall (and who doesn't?), Join us Tuesday, October 13<sup>th</sup> at 1 p.m. and 6:30 p.m. for the season premiere of **This Old House**, and the new season of **Ask This Old House** begins Friday, October 16 at 6:30 p.m.

Linda Gerofsky - Station Manager  
www.wkyupbs.org

## LISTENERS' RESPONSE

Here's a sampling of what our members had to say regarding the week-day changes in our radio program line-up. We would still like to hear from you. Email us at [wkyufm@wku.edu](mailto:wkyufm@wku.edu).



*Have you people lost your minds?  
- Bowling Green*



*I love it! I think it's great? - Morgantown*



*All I have to say about the changes is hooray! - Alvaton*



*I think you have made a serious error in dropping music. - Bardstown*



*We will miss the morning classical music. - Campbellsville*



*Be assured of our continuing ear, contribution & comment. -New Harmony*



*I like the format change! - Somerset*



*I'm not happy but it's still the best thing on radio & I'll listen - Bowling Green*

### I WISH TO SUPPORT WKU PUBLIC MEDIA!

#### Amount of Support

\$

#### Bill my credit card:

VISA  MasterCard  Discover  Amer. Exp.

acct. # \_\_\_\_\_

Exp. Date \_\_\_\_\_

WKU Public Media  
1906 College Heights Blvd. #11035  
Bowling Green, KY 42101-1035  
1-800-599-WKYU

Checks payable to:  
**WKU Foundation**

*Your gift to WKU Public Media may be tax deductible. Each membership will receive the next twelve monthly editions of Choice.*

**THANK YOU**



**WKU Public Radio**

WKYU-FM • WDCL-FM • WKPB-FM • WKUE-FM



**WKYU-PBS** Channel 24

Name: \_\_\_\_\_

Address: \_\_\_\_\_

City: \_\_\_\_\_ County: \_\_\_\_\_

State: \_\_\_\_\_ Zip: \_\_\_\_\_ Phone: \_\_\_\_\_