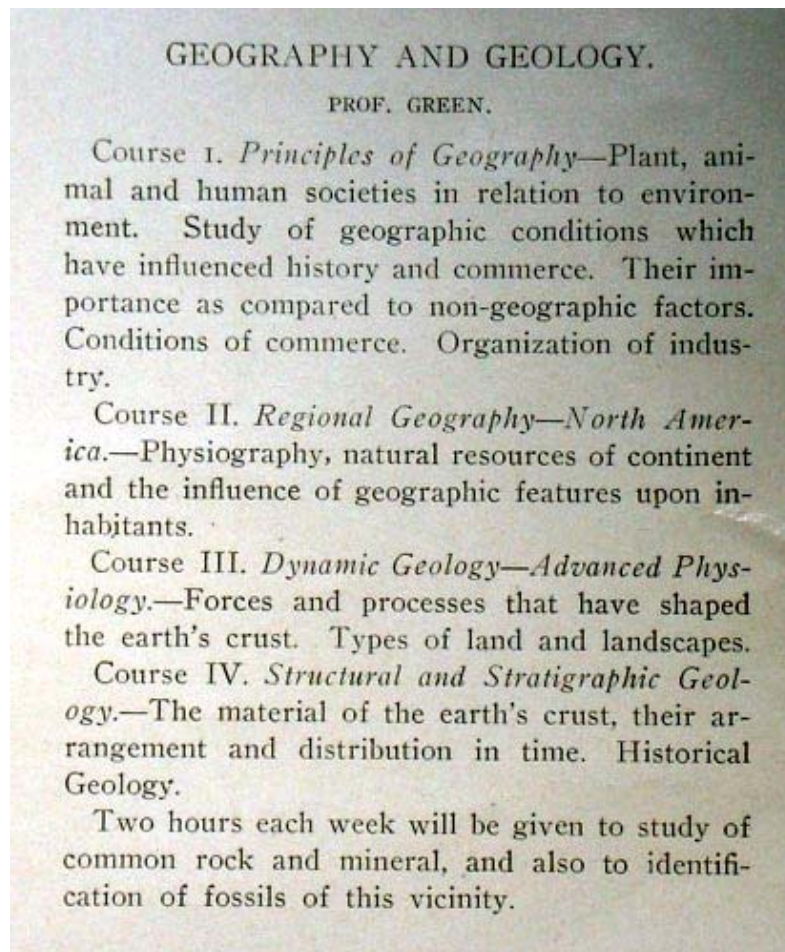
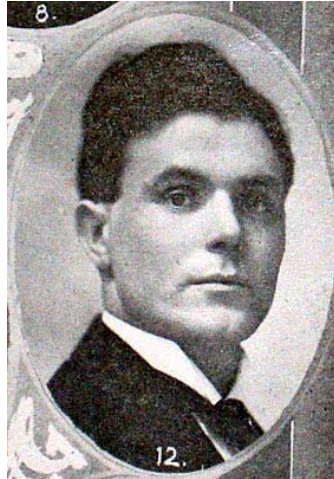


The Department of Geography and Geology ONE HUNDRED YEARS AGO

The State Normal School, Western District, was formed in Bowling Green, Kentucky on 22 January 1907. It enrolled 1,770 students during its first year. In August 1908, it published a Bulletin, Volume 2 No. 4, for the academic year 1908-1909 that was to begin on 8 September 1908. The course offerings from each of its eleven departments were listed. The Department of Geography and Geology was one of those departments. Four courses were described: Principles of Geography, Regional Geography, Dynamic Geology, and Structural and Stratigraphic Geology. The latter course had two hours each week for the study of rocks, minerals, and fossils.



Among the thirty-two members of the faculty and staff, was Professor R. P. Green who was the single member of the Department of Geography and Geology. He graduated from Southern Normal School in 1900, was a student at Chicago University in 1906, and was a Professor at Southern Normal School in Bowling Green from 1902 to 1907.



Professor Green and his class were used in the Bulletin as an illustration of fieldwork in an era of rather slow means of transportation.



ONE OF PROF. GREEN'S GEOGRAPHY CLASSES DOING FIELD WORK.
The party returning from five days' outing at Mammoth Cave.

The Department participated in two Certificate Courses. The Elementary Certificate included Geography 1, Geography 2, and Physiography as three of the twenty-eight week resident requirements that led to an entitlement to teach in any of Kentucky counties' schools.

ELEMENTARY CERTIFICATE COURSE.

This course leads to the Elementary Certificate which entitles the holder to teach in any county of the State for a period of two years immediately following issuance. The certificate will be granted to no one for less than twenty-eight weeks resident work.

Physiology 2	Grammar 3	Geography 1
Grammar 2	Arithmetic 3	Composition
Arithmetic 2	Pedagogy 1	U. S. History 1
Psychology 1	English History	Observation
Music 1	Music 2	Drawing 1
Forensics 1	Forensics 2	Forensics 3
	Geography 2	Nature Study
	Reading 2	American Literature
	U. S. History 2	Algebra 1
	Algebra 1	Physiography
	Drawing 2	

Those who earned the Elementary Certificate were eligible to enter an additional one-year Intermediate Certificate program. The Department offered Climatology as one of its electives.

INTERMEDIATE CERTIFICATE COURSE.

Those completing the preceding course can complete this course in one year of forty-eight weeks. Prior to graduation the applicant must have full credit for all of the work in the preceding courses, the subjects named in this course and four electives taken either from the following course or from some special courses. The selection of the elective must be approved by the Program Committee. No certificate of this class will be granted to any one, regardless of scholarship, for less than twenty-eight weeks of resident work.

Rhetoric 1	Rhetoric 2	English Lit. 2
Biology 1	Biology 2	Biology 3
Physiology 3	Geometry 1	Geometry 2
Algebra 3	English Lit. 1	Psychology 2
Elective 1	Elective 2	Elective 3
Forensics 4	Forensics 5	
	Advanced Eng. 1	Sociology
	Biology 4	Advanced Eng. 2
	Geometry 3	Pedagogy 2
	Psychology 3	Climatology
	Elective 4	

The Department of Geography and Geology one hundred years later has grown to twenty-three faculty members who serve about 240 undergraduate majors, 95 minors, and 34 graduate students.