

# 2009's Head Start Funding



## Great News... But Careful Planning is Needed

**\$2.1 billion as part of the American Recovery and Reinvestment Act of 2009**  
**\$7.1 billion for Head Start in the FY 2009 Omnibus Appropriations Bill**

Head Start programs will receive a 4.9% cost of living increase, the opportunity to expand services, the funding to serve more children and families, money to purchase needed equipment and materials, dollars to provide professional development opportunities for staff, and the financial support to build and/or renovate space... *It seems like only good news!*

**It is Good News...** but to make it stay good news and make the most of these funding streams, planning must be careful and strategic, and choices will have to be made to avoid the consequences of decisions that put a long-term burden on the program, rather than ensuring positive outcomes for children, families, and the local community.



**What Needs to be Done...** First, remember, and help Board and Policy Council members to remember, that these are two different sources of money with very different goals and requirements. The “stimulus” money is short-term, one-shot money—the funding for ARRA only lasts for two years. The purpose is to create jobs and thereby “stimulate” the economy. Although both ARRA and the appropriation increase in the FY 2009 budget will follow the priorities set out in the *2007 Head Start for School Readiness Act*, it is critical to remember that ARRA dollars are not likely to remain an on-going part of a Head Start program’s base funding.

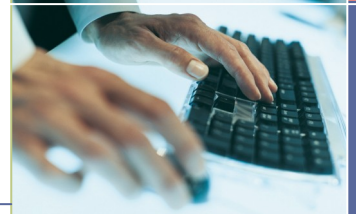
Stimulus funds have to be tracked separately from “regular” Head Start and Early Head Start grant dollars. The FY 2009 appropriation funds are incorporated into a program’s base funding and are to be tracked and monitored in the same way current HS/EHS funds are tracked and monitored. For both funding streams, management staff and program decision makers should begin by asking these questions:

*“What are the priorities and needs of our communities?”*

*“What are our program priorities and needs?”*

*“What long-term positive effects can these funds have on our program and program services?”*

Whether it is purchasing goods, renovating existing facilities and/or securing services, the long-term impact on your ability to serve children and their families and operate the program more efficiently should be kept in the forefront of the decision making process.



**CONTACT US TODAY!**

**800-TTAS-4-TA**  
**(800-882-7482)**

**TTAS.INFO@WKU.EDU**

**FOR  
CONSULTING AND  
PROFESSIONAL  
DEVELOPMENT  
SERVICES**

**VISIT US AT  
WWW.TTAS.ORG**

# What Can T/TAS Do For You?

## We Can Help You With the Planning Process:

- Our management specialists can come on-site to meet with your management team and decision makers to facilitate a focused strategic planning process with the goal of developing a set of immediate program priorities that will have long-term positive impact on your program operations.
- We can update your community assessment, either as a complete re-write, or research and analyze community data to provide targeted information to guide decisions for changing your program option or providing different levels or types of service.
- Our fiscal team can help you develop the systems you will need to separately track the “stimulus” funds and make the appropriate revisions to your fiscal procedures.
- We can assist you in reviewing your organizational design, job descriptions, and personnel requirements in order to effectively manage your human capital and provide high-quality professional development experiences.
- Our management, education, health, and family services specialists can provide high-quality, university-based training for staff both as “one shot” training or as part of a program of on-going training for all of your program staff

***If you are going to apply for Early Head Start Expansion...*** Now is the time to start putting together the information needed to have a strong, competitive EHS proposal, including community assessment information, staffing patterns, service delivery models, estimated cost, and community partnerships. The turn-around time is going to be very quick for these RFPs (30 to 60 days), so being ready with the information, letters of commitment from community partners, budgets, and so on will put less strain on the grant-writing process.

Our early childhood specialists can assist you in planning and designing the environment for your Early Head Start program and provide high-quality, university-based training for infant-toddler staff.



**CONTACT US TODAY!**

**800-TTAS-4-TA  
(800-882-7482)**

**TTAS.INFO@WKU.EDU**

**FOR  
CONSULTING AND  
PROFESSIONAL  
DEVELOPMENT  
SERVICES**

**VISIT US AT  
WWW.TTAS.ORG**