

THE CHILD CARE PROFESSIONAL

The Newsletter of the Child Care Resource & Referral at WKU



Volume XV, Number 5

May 2008

THE CHILD CARE PROFESSIONAL

The Newsletter of the Child Care Resource & Referral at WKU

THE CHILD CARE PROFESSIONAL is published monthly by Training & Technical Assistance Services and the Child Care Resource & Referral (CCR&R) at Western Kentucky University. The CCR&R at WKU serves the Barren River Area Development District of Kentucky which includes Allen, Barren, Butler, Edmonson, Hart, Logan, Metcalf, Monroe, Simpson, and Warren Counties. Primary services offered by the CCR&R include:

- Distributing consumer education materials to families seeking child care,
- Providing child care referrals to parents;
- Offering training to early childhood providers and parents;
- Helping potential child care providers establish programs,
- Providing training hours leading to the Commonwealth Child Care Credential and the Child Development Associate (CDA), and
- Advocating for affordable, accessible, high quality services for children and families.



The professionals and staff of the CCR&R at WKU are ready to provide assistance in a number of areas. Our staff includes:

Dr. Connie Jo Smith, CCR&R Director

Jill Norris, CCR&R Coordinator

Heather Alms, Provider Assistant & Office Coordinator

Sherri Meyer, Early Childhood Coordinator

Dr. Amy Hood Hooten, Training Specialist

SHARE THE KNOWLEDGE. Articles and stories from this newsletter may be photocopied or reprinted without written permission from the CCR&R at WKU. Reprints should, however, credit the magazine as follows: "Reprinted from **THE CHILD CARE PROFESSIONAL**, (date of issue), with permission from the Child Care Resource & Referral at WKU."

KEEP IN TOUCH. If you are not currently receiving the newsletter at your own center or agency, please contact our office by mail, phone or e-mail and we will add your name to our mailing list. If you, your agency or center are moving, please let us know your new address; we'll update our mailing list, and you won't miss an issue of **THE CHILD CARE PROFESSIONAL**. (If you no longer wish to receive this newsletter, please contact our office by phone or e-mail and we will remove you from our mailing list.)

Child Care Resource & Referral at Western Kentucky University

1906 College Heights Blvd. #11098, Bowling Green, Kentucky 42101-1098

Phone Us at (270) 745-2216 or (800) 621-5908 - Fax Us at (270) 745-7089

E-Mail Us at crr.expert@wku.edu • Or Visit Our Website at www.wku.edu/ccrr-wku/

Hours of Operation: 8:00 a.m. - 4:30 p.m., Monday through Friday

SUBSCRIPTION INFORMATION. Any program or person interested in receiving our newsletter may subscribe for \$36 per year. The monthly newsletter provides a variety of articles, news, and information for early care and education programs, including child care, family day care, preschool, and Head Start. Caregivers, teachers, administrators, and parents can all benefit from the newsletter. Single complimentary annual subscriptions of **THE CHILD CARE PROFESSIONAL** are provided to licensed child care centers, certified home providers, and special friends in the Barren River Area Development District (BRADD) of Kentucky. Additional subscriptions may also be purchased by these readers for the same rate of \$36 per year. All registered providers in the BRADD qualify for the discounted rate of \$26 per year for each additional subscription.

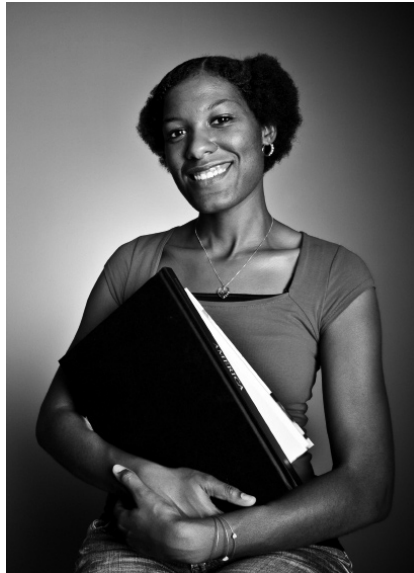
The newsletter is available in both printed and electronic versions. Print copies of **THE CHILD CARE PROFESSIONAL** are mailed at the end of each month; electronic copies are e-mailed directly to subscribers in a Portable Document File (PDF) which can be printed or viewed on your computer using Adobe Acrobat Reader (free software downloadable from www.adobe.com). Readers may select the format they prefer when subscribing. To receive an subscription form or to learn more, please contact our office by phone (800-621-5908 or 270-745-2216), by fax (270-745-7089), or by e-mail (heather.alms@wku.edu).

Funded in part by the Kentucky Cabinet for Health & Family Services through the University of Kentucky Research Foundation.

2008 Child Care Provider Appreciation Day

Since 1996, Child Care Provider Appreciation Day has been celebrated on the Friday before Mother's Day as a way to recognize child care providers. This year, May 9, 2008 has been designated as Provider Appreciation Day. The National Association for Child Care Resource and Referral Agencies (NAC-CRRA) estimates that over 13.8 million children in the United States have both parents working and are therefore in need of child care (<http://www.naccrra.org/randd/data/StateDemo.pdf>). This makes child care providers an important person in many children's lives. *ProviderAppreciation.org* has the following to say about these important individuals:

"Today's child care professionals are the world's unsung heroes. This profession is one of the most under-paid occupations in the country; yet research shows that early childhood is the most critical developmental period in a child's life. It takes a special person to work in this field and the contribution these individuals make to the quality of children's and families' lives too frequently goes unnoticed. Provider Appreciation Day offers a unique opportunity to recognize and commend the unselfish dedication, commitment and compassion that child care providers demonstrate every day."



How Can You Celebrate?

If you are a parent, you can celebrate in any number of ways, including:

- Help your child to draw a picture.
- Help your child to bake cookies.
- Help your child to plant a flower, water it, and nurture it until Provider Appreciation Day.
- Send a Thank You card.
- Send flowers to your caregiver.

- Take your caregiver out to lunch.
- Purchase a gift card to the provider's favorite store or restaurant.
- Donate a gift to the classroom.

If you are a child care program director, why not try one of the following suggestions:

- Call local restaurants, retail stores, and grocery stores to request gift certificates for the child care providers you work with.
- Plan a luncheon or dinner honoring child care providers.
- Hang banners or posters.
- Purchase a new piece of equipment in honor of the day.
- Provide a scholarship for an early care education conference or workshop.
- Pay for a day off so a provider may attend a conference or workshop.
- Organize a spa day.
- Serve the staff a continental breakfast.
- Plan a parent/provider picnic.

Communities and businesses can recognize Provider Appreciation Day, too.

- Offer a discount at your business for area child care providers.
- Plan a luncheon or dinner honoring child care providers.
- Ask government officials to sign a proclamation.
- Have a parade or dedicate a park.
- Send a press release to your local newspaper.

These are just a few ways you can say "Thank You" to those very important people who care for our children. What ideas can you think of? Be creative in showing your appreciation!

Digital Television Is Coming: Are You Ready?

Do you have a television set in your home or workplace that works with the help of “rabbit ears” or a rooftop antenna? If so, this article will help you prepare for an important change coming in February 2009.

Television broadcasting is moving from the old standard (known as “analog”) to a new standard, called “digital.” After February 17, 2009, all television programming will be broadcast in the digital format. Digital television offers several benefits for the consumer, including better picture quality, more channels, accessibility features, and parental controls. The digital television transition will also increase the number of analog air waves available to firefighters and police for emergency communication, so the consumer should also benefit from enhanced emergency services.

But the move to digital also means that after February 17, 2009, all analog televisions getting programming “over the air” through an antenna will need to be plugged into a special television converter to watch digital broadcasts. Although February 2009 might sound like a long way off, it’s not too early to start preparing.

What Are Your Options?

First, you could keep your TV and buy a converter. Starting in January 2008, government coupons will be available to reduce the price of certain converters by \$40. You may also choose to . . .

- Buy a digital television. Check with your retailer if you are buying a new television to make sure that it has a built-in digital tuner.
- Hook up your television to cable, satellite, or other pay television service. With this type of service, a converter is not needed.
- Buy a converter with enhanced features, such as one with a DVD recorder. Converters with enhanced features are not eligible for the Coupon Program.

Whatever you decide, you have until February 17, 2009, to prepare for the digital transition. After that date, you will no longer be able to view your over-the-air broadcasts on your analog TV.

Who Needs A Converter?

A “digital-to-analog” converter is a device that easily plugs into your television set. Plugging a converter into your existing television will allow you to continue to get your programs after February 17, 2009. The converter option is not necessary for everyone, though. Most people have television sets connected to cable, satellite, or other pay television service. Converters will not be needed for televisions connect to these types of service.

If you have a television with a digital tuner, then you will not need a converter. If you haven’t purchased a television in the last

five years, it probably does not include a digital tuner. An older set not connected to cable or satellite service is a good candidate for a converter. If you are unsure about your television, contact a local retailer and give them the make and model number of your TV; they should be able to tell you if you will need a converter.

Discount Coupons Are Available for Converters

Starting January 1, 2008, each household in America can request up to two coupons from the government to use toward the purchase of certain converters. Each coupon is worth \$40. Coupons will expire 90 days after they are issued. The government agency responsible for this program, the National Telecommunications and Information Administration, will also issue periodic updates on the Coupon Program. You can call 1-888-DTV-2009 or 1-888-388-2009 or visit www.dtv.gov now to find out how to apply for your coupons.





*CCR&R PROFESSIONAL
DEVELOPMENT TRAINING*

JUNE 2008

REGISTRATION PORTFOLIO

CCR&R PROFESSIONAL DEVELOPMENT TRAINING JUNE 2008 REGISTRATION PORTFOLIO

The Child Care Resource & Referral at WKU is the leading provider of quality, affordable training in the 10 counties of the Barren River Area Development District. The professional staff and consultants of the CCR&R provide Professional Development Training each month on a variety of topics, suitable for both new and veteran child care and family child care staff and administrators. Events are conveniently scheduled in the evening or on Saturdays and participants qualify for Child Care Training Credits.

This special removable section of **THE CCR&R PROFESSIONAL** contains registration forms for upcoming training events for the months of June 2008. Simply detach the portfolio pages from the rest of the newsletter and copy the registration form or forms you need. Then pass the **REGISTRATION PORTFOLIO** on to your co-workers or colleagues so that they may copy the forms to register for the training in which they are interested. Please complete and return your registration form(s) with payment by the date specified on each form. You may also register on-line for all CCR&R training at www.wku.edu/ccrr-wku. For additional details on scheduled events, please contact the CCR&R at (270) 745-2216 or (800) 621-5908.

The CCR&R reserves the right to cancel an event if enrollment criteria are not met or when conditions beyond our control prevail. In the event of cancellation, the liability of the CCR&R is limited to the refund of registration fees only.

Attending Weekday Training? We Provide the Parking Pass!

Weekday parking on the WKU campus can be difficult. That's why the CCR&R provides free temporary WKU Visitor's Parking Passes for those pre-registering to attend CCR&R training on a weekday (Monday-Friday). Stickers can be picked up at Registration and should be placed on the driver's side dashboard of your car. Passes are valid only for the dates indicated on the pass. With a Visitor's Pass, you may park in all Non-Premium lots, including non-premium Faculty/Staff, Housing, Student, and Commuter Lots. You cannot park in Premium (i.e., gated) Lots, Handicapped Parking Slots, or Loading Zone slots, or in fire lanes or other parking-prohibited areas. (As always, parking on campus is not regulated after 5:00 and on weekends, so passes are not required for attending evening training or training on Saturdays.)

Although the CCR&R will have parking permits available for you at registration, you may still pick up on your own if you wish. Visitor parking permits are available at the WKU Transportation Office located at 578 Campbell Lane or at the Kentucky Museum on Kentucky Street.

Have You Lost Your Training Certificate?

If you've lost the certificate for any professional development training you received from the CCR&R, we will be happy to re-issue the certificate. Duplicate certificates are \$5 each and can be ordered by contacting Heather Alms at 270-745-2216 or 800-621-5908.

CCR&R Professional Development Training

INTRODUCTION TO RESOURCES IN KENTUCKY

1:30-3:30 p.m., Thursday, June 5, 2008

Jones-Jaggers Hall, University Boulevard, WKU, Bowling Green, Ky

For training to count toward the required training hours for child care providers, the state of Kentucky requires that trainers have a *Kentucky Trainer's Credential*. To earn the *Kentucky Trainer's Credential*, a training professional must meet certain requirements and participate in two required training sessions. If you are an Early Care and Education professional who is working on or interested in obtaining a *Kentucky Trainer's Credential*, you will want to first participate in *Introduction to Resources in Kentucky*. This is one of two sessions required to submit an application for a *Kentucky Trainer's Credential*. Training is limited to 25 participants per session. ***Please note that training hours are not awarded for this training.***

Doors will open and participant check-in will begin 1:00 p.m.

Copy and share this form as necessary; print clearly and submit one form per person.

Registration Fee is \$30 per participant.

Register on-line at www.wku.edu/ccrr-wku OR return form with payment by May 23, 2008.

No registrations accepted after May 23, 2008. There will be no on-site registrations!

Name: _____ Position: _____

Age Group(s) Served: _____ Program Name: _____

Address: _____

City: _____ County: _____ State: _____ Zip Code: _____

Phone Number: _____ E-Mail Address for Confirmation (if available): _____

ECE-TRIS ID Info: Birth Date: ___ / ___ / ___ (Day/Mo/Yr) Last 4 Digits of SSN: _____

Check Enclosed Purchase Order # _____ Enclosed

Please bill my Credit Card (Visa, Mastercard, Discover): _____

Card Expiration Date: ___ / ___ Signature: _____

No registrations accepted after May 23, 2008. Please register on-line at www.wku.edu/ccrr-wku OR return completed registration form ***with payment*** to:

Child Care Resource & Referral

Western Kentucky University, 1906 College Heights Blvd. #11098

Bowling Green, KY 42101-1098

ACCESSIBILITY NEEDS: Do you have a disability that requires special materials or services? Please explain: _____

CANCELLATIONS: To avoid obligation for payment of fees or to obtain a refund, all cancellations must be received in writing five working days prior to the event.

CCR&R Professional Development Training

EVALUATING YOURSELF TO GROW PROFESSIONALLY

6:00 - 8:00 p.m., Tuesday, June 10, 2008

Jones-Jaggers Hall, University Boulevard, WKU, Bowling Green, Kentucky

This session will explain the many parts of training from core content to training levels. You will develop short and long range plans and create a professional development plan for the future. *Presenter: Sherri Meyer, CCR&R Early Childhood Coordinator. Target Audience: General. CDA Subject Area: 6. Core Content: Professional Development, Professionalism. Training Level: 2.*

Doors will open and participant check-in will begin at 5:30 p.m.
Copy and share this form as necessary; print clearly and submit one form per person.

Registration Fee is \$15 per participant.

Register on-line at www.wku.edu/ccrr-wku OR return form with payment by May 30, 2008.

No registrations accepted after May 30, 2008. There will be no on-site registrations!

To receive CEU Credits, please check here ___ and include an additional \$15 fee.

Name: _____ Position: _____

Age Group(s) Served: _____ Program Name: _____

Address: _____

City: _____ County: _____ State: _____ Zip Code: _____

Phone Number: _____ E-Mail Address for Confirmation (if available): _____

ECE-TRIS ID Info: Birth Date: ___/___/___ (Day/Mo/Yr) Last 4 Digits of SSN: _____

Check Enclosed Purchase Order # _____ Enclosed

Please bill my Credit Card (Visa, Mastercard, Discover): _____

Card Expiration Date: ___/___ Signature: _____

No registrations accepted after May 30, 2008. Please register on-line at www.wku.edu/ccrr-wku OR return completed registration form with payment to:

**Child Care Resource & Referral
Western Kentucky University, 1906 College Heights Blvd. #11098
Bowling Green, KY 42101-1098**

ACCESSIBILITY NEEDS: Do you have a disability that requires special materials or services? Please explain: _____

CANCELLATIONS: To avoid obligation for payment of fees or to obtain a refund, all cancellations must be received in writing five working days prior to the event.

CCR&R Professional Development Training

Saturday, June 21, 2008

Mass Media & Technology Hall, Normal Drive, WKU, Bowling Green, Kentucky

Morning Session: 9:00 a.m.-Noon

- A CLOSER LOOK AT DEVELOPMENTALLY APPROPRIATE PRACTICE (DAP).** This session will take a closer look at developmentally appropriate practice with young children. We will discuss what DAP looks like and how we can implement appropriate practices into our classrooms and homes. *Presenter: Sherri Meyer, CCR&R Early Childhood Coordinator. Target Audience: General. CDA Subject Area: 1. Core Content: Learning Environments, Curriculum. Training Level: 3.*
- MIXING LITERATURE AND DRAMA.** This session will provide an interactive look at ways of using children's literature to explore, utilizing drama techniques and dancing in the classroom. *Presenter: Jill Norris, CCR&R Coordinator. Target Audience: Preschool. CDA Subject Area: 2. Core Content: Learning Environments, Curriculum. Training Level: 3.*

Afternoon Session: 1:00-3:00 p.m.

- IT TAKES A COMMUNITY.** This session will help participants explore ways of connecting families with community resources to help better meet the needs of their children. *Presenter: Jill Norris, CCR&R Coordinator. Target Audience: Preschool. CDA Subject Area: 4. Core Content: Families & Community Partnerships. Training Level: 2.*
- MANAGING YOUR PROGRAM WITH RESOURCES IN KENTUCKY.** This session will discuss the resources in Kentucky that have been developed for early care and education settings. We will look at the three resources designed to evaluate your program with a self-study, to use standards for children birth to five; and to choose screening and assessment tools. Put your treasure hunting hat on as we explore the various resources. *Presenter: Sherri Meyer, CCR&R Early Childhood Coordinator. Target Audience: General. CDA Subject Area: 6. Core Content: Professional Development, Professionalism. Training Level: 3.*

Doors will open and participant check-in will begin at 8:30 a.m.

Copy and share this form as necessary; print clearly and submit one form per person.

Registration Fees are \$20 per participant for the 3-hour Morning Session and \$15 per participant for the 2-hour Afternoon Session. (\$35 for a full day of training)

**Register on-line at www.wku.edu/ccrr-wku OR return form with payment by June 11, 2008.
*No registrations accepted after June 11, 2008. There will be no on-site registrations!***

To receive CEU Credits, please check here ___ and include an additional \$15 fee.

Name: _____ Position: _____

Age Group(s) Served: _____ Program Name: _____

Address: _____

City: _____ County: _____ State: _____ Zip Code: _____

Phone Number : _____ E-Mail Address for Confirmation (if available): _____

ECE-TRIS ID Info: Birth Date: ___ / ___ / ___ (Day/Mo/Yr) Last 4 Digits of SSN: ___

Check Enclosed Purchase Order # _____ Enclosed

Please bill my Credit Card (Visa, Mastercard, Discover): _____

Card Expiration Date: ___ / ___ Signature: _____

No registrations accepted after June 11, 2008. Please register on-line at www.wku.edu/ccrr-wku OR return completed registration form with payment to:

**Child Care Resource & Referral, Western Kentucky University
1906 College Heights Blvd. #11098, Bowling Green, KY 42101-1098**

ACCESSIBILITY NEEDS: Do you have a disability that requires special materials or services? Please explain: _____

CANCELLATIONS: To avoid obligation for payment of fees or to obtain a refund, all cancellations must be received *in writing* five working days prior to the event.

CCR&R Professional Development Training
ORIENTATION TRAINING FOR EARLY CARE & EDUCATION PROFESSIONALS
Thursday, June 26, 2008
Jones-Jaggers Hall, University Boulevard, WKU, Bowling Green, Ky

Morning Session: 9:00 a.m. - Noon

- RECOMMENDED PRACTICES.** This is the first half of the mandatory session of six-hour training that all child care employees must attend during the first 90 days of employment. *Presenter: Sherri Meyer, CCR&R Early Childhood Coordinator. Target Audience: New Employees. CDA Subject Area: 1, 3, 8. Core Content: Learning Environments & Curriculum, Child Growth & Development. Training Level: 1.*

Afternoon Session: 1:00 - 4:00 p.m.

- BASIC HEALTH, SAFETY, AND SANITATION AND RECOGNIZING AND REPORTING CHILD ABUSE.** This is the second half in a mandatory session of six-hour training that all child care employees must attend during the first 90 days of employment. *Presenter: Jill Norris, CCR&R Coordinator. Target Audience: New Employees. CDA Subject Area: 1. Core Content: Health, Safety & Nutrition. Training Level: 1. **This session also functions as the Registered Providers Orientation.***

Doors will open and participant check-in will begin at 8:30 a.m.
 Copy and share this form as necessary; print clearly and submit one form per person.

Registration Fee is \$40 per participant.

Register on-line at www.wku.edu/ccrr-wku OR return form with payment by June 16, 2008.

No registrations accepted after June 16, 2008. There will be no on-site registrations!

To receive CEU Credits, please check here ___ and include an additional \$15 fee.

Name: _____ Position: _____

Age Group(s) Served: _____ Program Name: _____

Address: _____

City: _____ County: _____ State: ___ Zip Code: _____

Phone Number: _____ E-Mail Address for Confirmation (if available): _____

ECE-TRIS ID Info: Birth Date: ___ / ___ / ___ (Day/Mo/Yr) Last 4 Digits of SSN: _____

Check Enclosed Purchase Order # _____ Enclosed

Please bill my Credit Card (Visa, Mastercard, Discover): _____

Card Expiration Date: ___ / ___ Signature: _____

No registrations accepted after June 16, 2008. Please register on-line at www.wku.edu/ccrr-wku OR return completed registration form with payment to:

Child Care Resource & Referral, Western Kentucky University
1906 College Heights Blvd. #11098, Bowling Green, KY 42101-1098

ACCESSIBILITY NEEDS: Do you have a disability that requires special materials or services? Please explain: _____

CANCELLATIONS: To avoid obligation for payment of fees or to obtain a refund, all cancellations must be received in writing five working days prior to the event.

Understanding ECE-TRIS

The Early Care & Education Training Records System

Since July 1, 2007, there has been a new system in place designed to store and maintain individual training records for ALL early care and education professionals in the state of Kentucky. Information regarding all training participants is maintained in the system called the **Early Care and Education Training Records Information System**, or **ECE-TRIS**.

This system was created as part of Kentucky's 20-year early childhood development plan and includes several benefits. The ECE-TRIS system provides a central location for training records that can be accessed 24 hours a day, seven days a week, if necessary. This system will help trainees keep track of their training on an individual basis and will be very beneficial to all involved.

There are two forms that every program that needs to ensure are completed and mailed to the ECE-TRIS in Richmond, Kentucky. The first form is an *Early Childhood Facility/Provider Form* which requires information about the program including the type of facility, address, phone, and director information.

The second *Information Form* should be completed by each staff member and includes their own personal information. The ECE-TRIS system uses a **personal identifier number** for each staff person to ensure that appropriate credit is given to the individual completing the training. The identifier number includes the person's birth date and the last four digits of the person's Social Security number. Accordingly, this information is requested on each CCR&R registration form to insure that the ECE-TRIS credits the proper number of clock hours to the appropriate trainee.

The *Information Form* should be completed and mailed as soon as possible in order to ensure adequate tracking of training for each new staff member. Once completed, the forms should be mailed to:

ECE-TRIS, University Training Consortium
 EKU, 521 Lancaster Avenue, 229 Mattox Hall
 Richmond, Kentucky 40475
 Fax: 859-622-6838

The CCR&R at WKU is responsible for entering training information into the system for individuals who attend any CCR&R sponsored training. Individuals attending CCR&R training should sign a special ECE-TRIS sign-in sheet in each session to document their attendance. Participants still receive a training certificate upon completion of training; however, this system will also track individual training hours over a period of years.

If you have questions about the system, please contact the ECE-TRIS team by phone at 859-622-8811 or by e-mail at ecetris@eku.edu. If you have other questions regarding the system and how it works within the BRADD, please feel free to contact the CCR&R staff at 800-621-5908 or by e-mail at crr.expert@wku.edu.

This form is titled "Early Care and Education-TRIS Early Childhood Facility/Provider Form". It includes sections for "INFORMATION SECTION" (Name, Type, Mailing Address, Physical Address, Phone, Fax, Facility Web Address) and "CONTACT INFORMATION" (Birthdate, Name, Mailing Address, Physical Address, Phone, Fax, Email Address). It also contains contact information for ECE-TRIS at Eastern Kentucky University.

This form is titled "Early Care and Education - Training Records Information Systems Information Form". It includes sections for "PERSONAL INFORMATION" (Birthdate, Name, Mailing Address, Physical Address, Phone, Fax, Email Address), "EARLY CARE AND EDUCATION JOB TITLE", "GENDER", "RACE", "ETHNICITY", "Secondary Language", "EMPLOYMENT INFORMATION" (Employer Name, Address, City, State, Zip Code, Phone, Fax, Director), and "CREDENTIAL INFORMATION" (Level, Specialty, Credential Number, Expiration Date). It also includes a section for "Please check the Area Development District(s) in which you train" with checkboxes for various regions like Barren River, Big Sandy, Bluegrass, etc.

Have You Learned to Pro-Talk?

The CCR&R sponsors a special computer listserv designed to discuss resources to enhance the quality and availability of early care and education services. The Professional Resource Opportunities, or Pro-Talk listserv is open to all persons interested in quality care and education, including child care teachers, directors, public preschool teachers, Head Start staff, and YOU!

All you need to join is a computer, Internet access, and an e-mail address. Go to the Pro-Talk website at <http://list.wku.edu/mailman/listinfo/pro-talk>. Enter your e-mail address, name, and a password of your choice. Select whether to receive messages individually or in a daily digest, and click on the button that says "Subscribe." Soon you'll be hearing from professionals around the region and participating in rich discussions with peers. Glad to have you aboard and keep in touch!

Been to the Library Lately?

Have you checked out the CCR&R Lending Library lately? We offer a wide variety of books, toys, and media, all available to anyone - parent, teacher, or caregiver - who might be interested. Plus the use of the Library is FREE!

We offer a wide variety of books, toys, and media, including materials on such topics such as Children's Literature; Program Administration; Curriculum; Health and Safety; Training and Professional Development; and Parent Involvement. Children's books written in Spanish are also now available!

The Child Care Resource & Referral Lending Library is open Monday through Friday from 8:00 a.m. until 4:30 p.m. Please contact us at 270-745-2216 or 800-621-5908 to schedule a time to visit. We are located on the WKU campus, Jones Jagers Hall Room 117. Call us if you need directions!



650+ Participating Online Stores

How Can Everyday Shopping Benefit Child Care Resource and Referral at WKU (CCRR)?

Toothpaste is one of many things we cannot go without. We're constantly buying it.

Imagine this: buying toothpaste, beauty essentials, books, CDs and all your everyday items online, only now it makes a difference for your favorite worthy cause. At **iGive.com**®, you can shop for just about anything, from the smallest tube of toothpaste to the biggest flat-panel TV, and a portion of every purchase is donated to Child Care Resource and Referral at WKU (CCRR).

iGive.com is FREE for you and free for our organization. Shop for everyday items at 650+ participating online stores including Vitamin Shoppe.com, Staples, Barnes & Noble, drugstore.com, Lands' End, QVC, and PETS.MART. Up to 26% of each purchase is donated to your favorite worthy cause.

Though you're likely to find dozens of items more enticing than toothpaste, a simple purchase is a good way to start giving!

Start Today:
www.iGive.com/CCRRWKU

For a limited time: get a \$5 bonus donation with your 1st purchase at any iGive.com store!*



- | | | | | |
|---------------------|-----------------------|----------------------|---------------------|----------------------|
| Stores Include: | DesignWithinReach | HSN | Nokia USA | ShopNBC |
| 1-800-Flowers | Discovery Store | Illuminations.com | NOVICA | Shutterfly |
| 1-800-PetMeds | DisneyShopping | iMaternity | Nutrisystem | Snapfish |
| 123Inkjets | drugstore.com | iPod Store | Office Depot | Solutions Catalog |
| A&E Online Store | Eastbay | Jackson & Perkins | Office Max | SONY |
| AbeBooks.com | EMS | JCPenney | OldNavy.com | Sports Authority |
| ABT Electronics | eBags.com | JCWhitney | Omaha Steaks | Sprint |
| American Eagle | eBay.com | Jeffers Pet | One Hanes Place | Staples.com |
| Ann Taylor & LOFT | eBay.ca | Jessica London | One Step Ahead | Starbucks Store |
| Apple iTunes | EddieBauer | Joann.com | Orbitz | State Line Tack |
| Apple Store | Enterprise Car Rental | Johnston & Murphy | Oriental Trading | Steve Madden |
| Armani Exchange | Entertainment Books | JosABank.com | Orvis | Sun Coast |
| Art Gazebo | Epson Store | JustMySize.com | Overstock.com | Sunglass Hut |
| Ashford.com | ESPRIT | Kaplan Test Prep | PacificCoastFeather | Sur La Table |
| Avon | eToys | KB Toys | Palm Store | SureFit Slipcovers |
| Barnes & Noble | Expedia.com | King Size Direct | Paragon Gifts | T-Mobile |
| BBC America Shop | Exposures Online | Kmart.com | Payless.com | Target.com |
| Bergdorf Goodman | Fandango | Kodak EasyShare | PBteen | Ted by United |
| Best Buy | Fannie May Candies | Kohl's | PC Connection | The Body Shop |
| Blair.com | FinishLine | LAMPS PLUS | Peapod Grocer | The Children's Place |
| Blockbuster Online | FLAXart&design | Lancôme | Personal Creations | The Container Store |
| Blue Nile | FoodNetwork | Lands' End | Pet Food Direct | Things Remembered |
| Bombay Company | Footlocker.com | Lane Bryant Catalog | Petals | ThinkPad/ThinkCentre |
| Bose.com | FOSSIL | LaneBryant.com | PETCO | Thrifty Car Rental |
| Brooks Brothers | FranklinCovey | LEGO Shop | Petscriptions.com | TimeLife.com |
| Brookstone | FTD.com | Lerner Catalog | PETS.MART | Tire Rack |
| Brylane Home | GameFly | Limited Too | Philips | Tower Records |
| Buy.com | Gap.com | Linen Source | Priceline.com | Travelocity.com |
| Cabela's | Gardener Botanika | Linens 'N Things | ProFlowers | Tupperware |
| Calendars.com | Gardener's SupplyCo. | Macy's | Puritan's Pride | ULTA |
| Camping World | Gateway | Maternity Mall | QVC | Uncommon Goods |
| Chadwick's | GiftCertificates.com | Mikasa.com | Radio Shack | United Airlines |
| ChefsCatalog.com | Gloss.com | MLB.com | RedEnvelope | Urban Outfitters |
| Cingular Wireless | GNC Store | Montgomery Ward | Register.com | Value Mags |
| Circuit City | Godiva Chocolatier | Mothercare | REI | Verizon Wireless |
| Coldwater Creek | H&RBlock.com | Motherhood Maternity | RestorationHardware | Vermont Teddy Bear |
| CompUSA | Half.com | Motherwear | Ritz Camera | Vitamin Shoppe |
| Computers4SURE | Hallmark.com | Mrs. Beasley's | Roaman's | Vons.com |
| Cooking.com | Hamacher.com | Mrs. Fields Gifts | Safeway.com | Weight Watchers |
| Country Inns | HarryandDavid | Musician's Friend | Saks Fifth Avenue | Wilson's Leather |
| Dale & Thomas | Hickory Farms | My Twinn | Sam Goody | Wolf Camera |
| Dean & DeLuca | Hilton Hotels | Neiman Marcus | Sears.com | Yves Rocher USA |
| dELIA's | Home Depot | Netflix | Sephora | Zales.com |
| Dell.com - Home | HP Home Store | Newport News | Sharper Image | Zones.com |
| Dell.com - Business | HP Small Business | Nirvana Chocolates | Shoebuy.com | ... & many more! |

* First purchase must be made within 45 days of joining. eBay bids are not considered for this purpose. Causes listed at iGive.com have been listed by members for their own and other members' use.

Math Is Everywhere If You Know Where to Look!

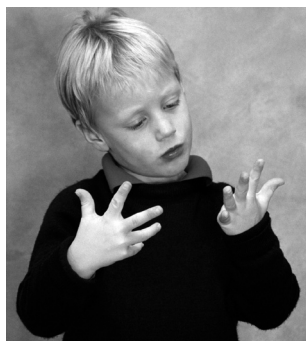
Sherri Meyer, CCR&R Early Childhood Coordinator

We often think that math is only taught and learned in elementary school, but that is far from being correct. Math is everywhere around us. There are many ways that we as parents and child care providers can introduce math and teach math on a daily basis. Math can be as simple as using math words (more, less, fewer, 1, 2, 3, some, many, etc.), counting out loud what you see, matching pictures or sizes of items, or noticing similarities or differences in objects.

Have fun with what you do with young children. Math is easy to incorporate into the day and you will be amazed at what children can learn. Following are some ideas for both child care providers and parents for children ages birth to five years.

Math Activities for Infants and Toddlers

- Next time you are rocking your baby, sing a number song. Try singing to the tune of “Row, Row, Row, Your Boat.”
- Holding your baby, swing gently from side to side and count to the rhythm as you move.
- Putting baby on her tummy on a soft blanket, display a few toys. Count the toys as you display them.
- As the baby is rocking on his hands and knees, join him and count as he rocks and make up a chant.
- As you hold your baby, count his nose, his eyes, his ears. Then count yours. For toddlers, use a mirror to count the body parts.
- As toddlers walk up or down steps, count the steps.
- As you drive down the highway, count the number of cars that pass you.
- As you play outside, count the number of leaves, rocks, or flowers that you see.
- Use a laundry basket or other container that can hold safe, soft, balls. As the toddler takes out each ball, count the balls.
- As you play on the playground, count the number of trees you see, the number of cars that drive by, etc.



Math Activities for Preschool Age Children

- Before going outdoors, take an inventory of what is needed (two mittens, one hat, one coat, two shoes, three balls, etc.)
- While outdoors, what amount or number of something (leaves, nuts, etc.) will fit into your pockets? This will also work indoors with other types of pockets and items.
- How many giant steps does it take to walk from point A to point B, such as the sand box to the tricycle?
- Make a map of the classroom or home and mark the routes that a child can take to move from one location to another. Do the same thing with the playground or neighborhood. Then actually follow the map and walk the route.
- During cleanup, put away all the round items, all the things that are not round, put away five things, etc.
- Challenge children to “put your toes over your head; put your hand lower than your stomach; hold up a few fingers.”
 - Touch a child’s back. Is it a few fingers, many fingers? Is it high or low?
 - Put up to five items in your pocket. Have the children guess how many are there. Say “That’s too many, that’s too few” until they guess the correct amount.
 - Have children group themselves by their clothing (type of shirts, color of socks, type of shoes, length of sleeves, with or without belts, etc.).
- Make a graph of favorites (sandwich, animal, color, ice cream, etc.) and then group the children together that have like similarities.
- At home when doing the laundry, ask your child to help you sort the clothes by color.
- At home, when folding the laundry, ask your child to help you match socks.

Look for children’s counting books, sing songs, and find math in the world around you. It’s there – you just have to identify it and have fun!

Math Activities for School Age Children

The age range for school age children is broad. Activities may need to be simplified and more guidance provided for younger children. Older children will likely be able to engage in the more complex activities and may play independently or in groups. Remember that math is more than counting. Among other things it includes: analyzing and creating patterns, gathering data and making graphs, estimating and measuring, understanding speed and distance, developing spatial skills, reasoning, problem solving, and so very much more.



- Play cards! All kinds of cards help build math skills during play and when calculating the score. (Rummy, Hearts, Crazy Eights, Rook, etc.). Rules to many card games (for adults and children) can be found at <http://www.pagat.com/alpha.html>.
- Play computer card games. Yahoo Games at <http://games.yahoo.com/> has games you can play for free online. Some games can be downloaded for a free trial and some games include a fee to download.
- Play board games on the table or online. Some may include basic math skills like counting, matching or sorting. Others may include making change, measuring, problem solving and logic. (Bingo, Chess, Monopoly, Backgammon, Checkers, Dominoes, etc.)
- Work puzzles of all kinds: mazes, brain teasers, jigsaw, Sudoku, riddles, etc.
- Encourage school age children to identify songs with math concepts included and to share them for discussion.
- Involve school age children in cooking. Planning for the right number of people, estimating the costs and shopping with a budget, and measuring the ingredients, can all contribute to math knowledge. Programs providing group care need to follow licensing and other relevant regulations.
- Go bowling and keep score. Learning to use the correct symbols (for spare and strike) and adding the numbers for each frame will allow children to practice math.
- Make a kite to fly. Making the kite requires mea-

surements and flying it can too.

- Involve children in woodworking projects. They can create their own products or you can use birdhouse kits, etc. Safety, of course, is critical.
- Provide art materials for children to explore space on paper and in the environment. String or rope can be used to measure and create.
- Help children set up a small business so they can learn about planning, budgeting, and making change.
- Invite guest speakers to share how they use math in their jobs (carpenters, bankers, investors, directors, etc.). In a home setting, guests could be friends sharing over dinner or in informal ways.

0-3 State Advocacy Leaders Selected

As part of ZERO TO THREE's project *Creating Connections for Babies*, 12 infant toddler professionals in Kentucky, New Mexico, New York, Oregon, Virginia and Wyoming have just been selected as the first Birth to Three State Advocacy Leaders! The 12 leaders will participate in their state's early childhood public-private partnerships, which are working to advance state policies for babies and toddlers.

Our congratulations to Judith Steilberg, Children's Program Director for the Family Place, and to our very own Dr. Amy Hood Hooten, Training Specialist for the CCR&R at WKU on being selected as the leaders of this effort in the state of Kentucky.

To learn more about *Creating Connections for Babies*, visit the ZERO TO THREE web site at http://www.zerotothree.org/site/PageServer?pagename=BM_03_03_08.

Book Review: *Nineteen Minutes*

Dana M. Bruce, WKU Library Media Education Student

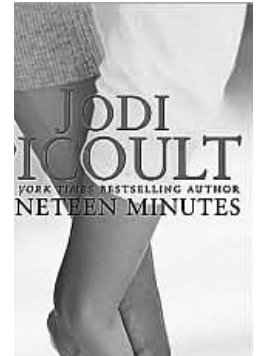
Nineteen Minutes. Picoult, Jodi. 455 p. Washington Square Press. 2007. Paperback \$15. ISBN-13: 978-0-7434-9672-5. Suitable for young adults & up.

Sterling, New Hampshire, will never be the same after a shooting at the high school sends a shock throughout the small town. Lives are forever changed after Peter Houghton goes on a killing rampage in the local high school which lasts 19 minutes. This act of revenge for years of bullying kills 10 people and injures 19. Friendships and family relationships are examined and challenged in the aftermath of the killings.

The story centers around two families: Peter's family and Josie Cormier's family. Peter and Josie were once best friends, as were their mothers. Josie's abandonment of Peter to be a member of the "in crowd" sends Peter over the edge.

This is a wonderful and heartbreaking story. The book examines the social issue of bullying and a horrific

ending to years of abuse encountered by a young man throughout his school years. No one could help him including his parents and teachers. The only best friend he had ever known begins to treat him badly as well, and the friends are reconnected in a way no one would have guessed in a surprise twist ending.



Even though this book was over 400 pages long, I had a difficult time putting it down. The author skillfully examines the bullying issue as well as true friendship. She also has great insight into the lives of teens today and their strained relationships with parents.

Want to Be Published? Announce An Event?

If you are an administrator, coordinator, teacher, or caregiver, we encourage you to submit articles to be considered for publication in **THE CHILD CARE PROFESSIONAL**. You can share your experiences in early care and education, tell us about activities that work well with children, share ways you communicate and involve families, or discuss ideas for working with colleagues or community partners. Do you have a scholar story to tell about going back to school? Have a story about working on STARS for your facility? Want to tell us about your experiences starting your child care program? We welcome your submissions.

All non-profit agencies are also welcome to submit announcements for consideration of publication in the CCR&R newsletter. Describe your services, let us know about an upcoming event, or describe a specialized service your agency provides. We do not guarantee acceptance or the exact date of publication, but we want you - as our partners in early childhood - to freely contribute to YOUR newsletter. We will make every effort to include your articles and announcements in **THE CHILD CARE PROFESSIONAL** on a timely basis.

All articles, submissions, and announcements should be limited to 400 words or less, and must be typed and sent electronically. (Sorry, submissions cannot be returned.) You may e-mail your submissions to connie.smith@wku.edu, or mail them on disk to: Child Care Resource & Referral at WKU, 1906 College Heights Blvd. #11098, Bowling Green, Kentucky 42101-1098.

Child Care Resource & Referral
Western Kentucky University
1906 College Heights Blvd. #11098
Bowling Green, KY 42101-1098

THE CHILD CARE PROFESSIONAL

The Newsletter of the Child Care Resource & Referral at WKU

May 2008