

CONGRATULATIONS!



Now that an Early Head Start expansion is in your future, it's time to consider start-up planning and program implementation!

At T/TAS, we take a team approach...

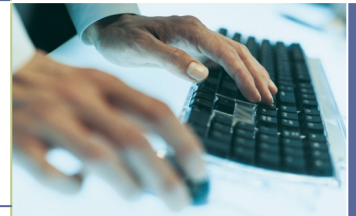
As your start-up planner, T/TAS provides you with access to the extensive skills, academic training, creativity, and real-world experience of our Head Start/Early Head Start content specialists. Our EHS interdisciplinary start-up team, directed by a lead planner, will work in concert with you to guide the design, planning, and implementation of your Early Head Start expansion goals.

The lead planner will interface with the broader T/TAS team to provide services and coordinate training/consultation that meets the specific needs of your new or expanded Early Head Start program.



The T/TAS Start-Up Experts are available to help...

- identify start-up technical assistance needs
- develop organizational structure
- orient and update Boards, Staff, and Partners
- find and discuss issues related to EHS services
- finalize timelines and responsibilities
- determine composition/schedule for Health Services Advisory Committee
- establish written agreements with the Part C System
- develop initial training and technical assistance plan
- write or revise job descriptions
- hire staff
- initiate staff development activities
- evaluate, secure, and prepare facilities
- your program to meet licensing requirements
- develop systems for reflective supervision
- train supervisory staff
- identify child care partnerships, if applicable
- recruit and train local child care providers, if applicable
- to develop family recruitment and enrollment plans
- identify your program's curriculum approach
- assist in ensuring community partners are ready to receive families
- identify strategies for family partnerships



IT'S EASY TO SECURE THE EXPERTISE OF T/TAS START-UP PLANNING TEAM MEMBERS.

CONTACT US TODAY

TO ASSIST WITH PLANNING AND IMPLEMENTATION OF YOUR EARLY HEAD START PROGRAM

**800-TTAS-4-TA
(800-882-7482)**

TTAS.INFO@WKU.EDU

**OR
VISIT US AT
WWW.TTAS.ORG**

START-UP PLANNING COST ESTIMATES AVAILABLE