

Reuse This!

Educational, Interactive

Materials:

- Background Paper
- Printed information
- Tape/glue
- Scissors
- Post-it notes
- Pen container
- Pens

Instructions:

- Cover the board with background paper
- Print sustainability information
- Designate an area for students to contribute reusable tips.
- Attach a post-it pad and pens to the board.
- Paste information on board in an engaging way.
- Allow students time to contribute their reuse tips!



Use old peanut butter jars for overnight oats.

Add oats, milk and sweetener to a jar along with your choice of fruit and nuts. Let rest overnight. Easy, simple breakfast!



Brandi the Dietitian

3 minute meals



Frame Display Boards

Use a Goodwill picture frame to make a memo board! It's a great way to save money and stay organized.



Housing and Resident Life
Dorm Sweet Dorm



DIY Tupperware



Many containers make great DIY tupperware. Try reusing the plastic Shogun or Panda Express containers to portion out the perfect amount of left overs.



Christian Ryan

DIY to go



Snack Containers

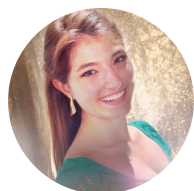
Use empty coffee creamer containers to make the perfect snack and cereal storage.



WKU Dining Services
Snacking made easy



Use tin cans and spray paint to make a trendy desk organizer



Andi Dahmer
SGA all the Way



Use bread clips to label cords! You'll never have to guess what cord goes with what gadget.



WKU IT Help Desk
Cords and cables



Use old lysol wipe containers to store plastic bags! Keep your cabinets organized and reuse the plastic bags for grocery shopping.



WKU Resource Conservation
Reduce*Reuse*Recycle



Hair

Organizer

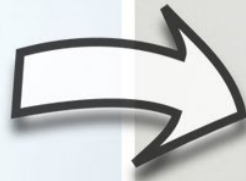
Use tin cans and spray paint to make a hanging hair organizer.



Big Red

I wip my hair

FROM
THIS



TO
THIS



Charging Station

Turn a shampoo or soap bottle into a phone charging station. Just clean and carefully cut the empty bottle into a usable shape. Make sure to cut out an outlet spot!



WKU Office of Sustainability
From trash to treasure



DIY Planter



Nothing livens up a space and someones day quite like fresh flowers. Almost any item can be used as an indoor planter, just pick an item that matches your personally and fill with your favorite flower, herb or succulents.



Project Grow

Grow anywhere

How do you REUSE?

Pin your tips here!

Remember the rules! Don't use spray paint in the building or on the sidewalk. Be careful crafting in the dorms :)



Reverse this!

Reverse this!

Reulse